

# G<sup>12x</sup> Scalable Platform Solution

Up to 18 Module Capability

VPC's G12x offers all of the benefits of the G12 in an 18 module interface. G12x uses both G12 and G12x ITAs and uses the same platform as G12, able to support up to 180 lbs (350 lbs when using the optional leg kit).



## Features and Benefits

- 18 module scalable solution accepts ITAs from either the G12 or G12x
- Provides an easy way of guiding a fixture into position prior to engagement
- Runners along the platform provide a smooth-sliding action
- Ideal for large scale fixtures

- Uses G12 platform and slides that support up to 350 lbs when used with leg kit
- Precise signal integrity between the receiver and ITA is maintained by QuadraTrack™ engagement mechanism
- Optional Keying Pin Kit prevents operational mismatch and protects pins from damage
- Reliable connectivity beyond 20,000 cycles

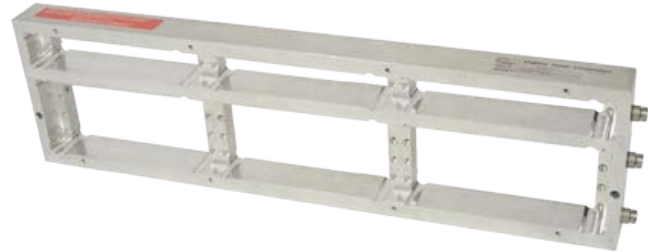
## G12x Receiver ▼

Specifications	
Weight	21.92 lbs [9.94 kg]
Frame Material	Anodized and Power Coated Aluminum
Slide Material	Nickel Plated Steel
Linkage, Handle and Latch	Stainless Steel
Available Module Slots	18 Positions
Cycle Life	20,000 cycles
Temperature	-55°C to 85°C
Maximum Weight Support	Without Leg Kit: 180 lbs [81.65 kg] With Leg Kit: 350 lbs [158.76 kg]



## G12x ITA ▼

Specifications	
Weight	4.48 lbs [2.03 kg]
Frame Material	Chromated Aluminum
Slide Material	Nickel Plated Steel
Available Module Slots	18 Positions
Cycle Life	20,000 cycles
Temperature	-55°C to 85°C



Part #	Description
<b>RECEIVERS</b>	
310 104 385	Receiver, G12x, 18 Module with 20" Platform
310 104 386	Receiver, G12x, 18 Module with 15" Platform
310 104 410	Receiver, G12x, 18 Module, with 15" Platform for Tabletop
310 104 411	Receiver, G12x, 18 Module, with 20" Platform for Tabletop
<b>ITAS</b>	
410 104 322	ITA, G12, Front Mount, 12 Module with Protective Cover
410 104 474	ITA, G12x, Front Mount, 18 Module
<b>ENCLOSURE</b>	
410 112 849	Enclosure, G12x, Front Mount, 6"x18"x12"
410 112 856	Enclosure, G12x, Front Mount, 6"x18"x12", for Discrete Wiring
410 112 665	Enclosure, G12, Front Mount, 4"x18"x12"
410 112 739	Enclosure, G12, Front Mount, 4"x18"x12", for Discrete Wiring
410 112 757	Enclosure, G12, Front Mount, 7"x18"x12"
<b>SLIDE KITS</b>	
310 113 409	20" Slide Kit, Fits 20"-22" Deep Racks, Supports 180 lbs
310 113 410	24" Slide Kit, Fits 24"-26" Deep Racks, Supports 180 lbs
310 113 451	28" Slide Kit, Fits 28"-30" Deep Racks, Supports 180 lbs
310 113 411	30" Slide Kit, Fits 30"-32" Deep Racks, Supports 180 lbs
310 113 500	36" Slide Kit, Fits 34"-38" Deep Racks, Supports 180 lbs
<b>ACCESSORIES</b>	
310 113 433	Gap Cover, G12/G12x, Rack Mount
310 113 439	Keyboard Tray Kit, Slide Configuration, Keyboard with Touchpad Mouse Included
310 113 453	Instrument Bracket Kit with Strain Relief
310 113 519	Rack Extender Kit, G12x, 1.5" Deep
310 113 566	Adjustable Leg Kit for the 20" Platform, 27-36", Supports 350 lbs
310 118 112	Keying Pin Kit, Receiver/ITA
310 113 518	Protective Cover, G12x, Receiver
410 112 857	Protective Cover, G12x, ITA
410 112 681	Replacement Protective Cover, G12, ITA
310 113 520	Rear Cover, G12x, Tabletop Configuration