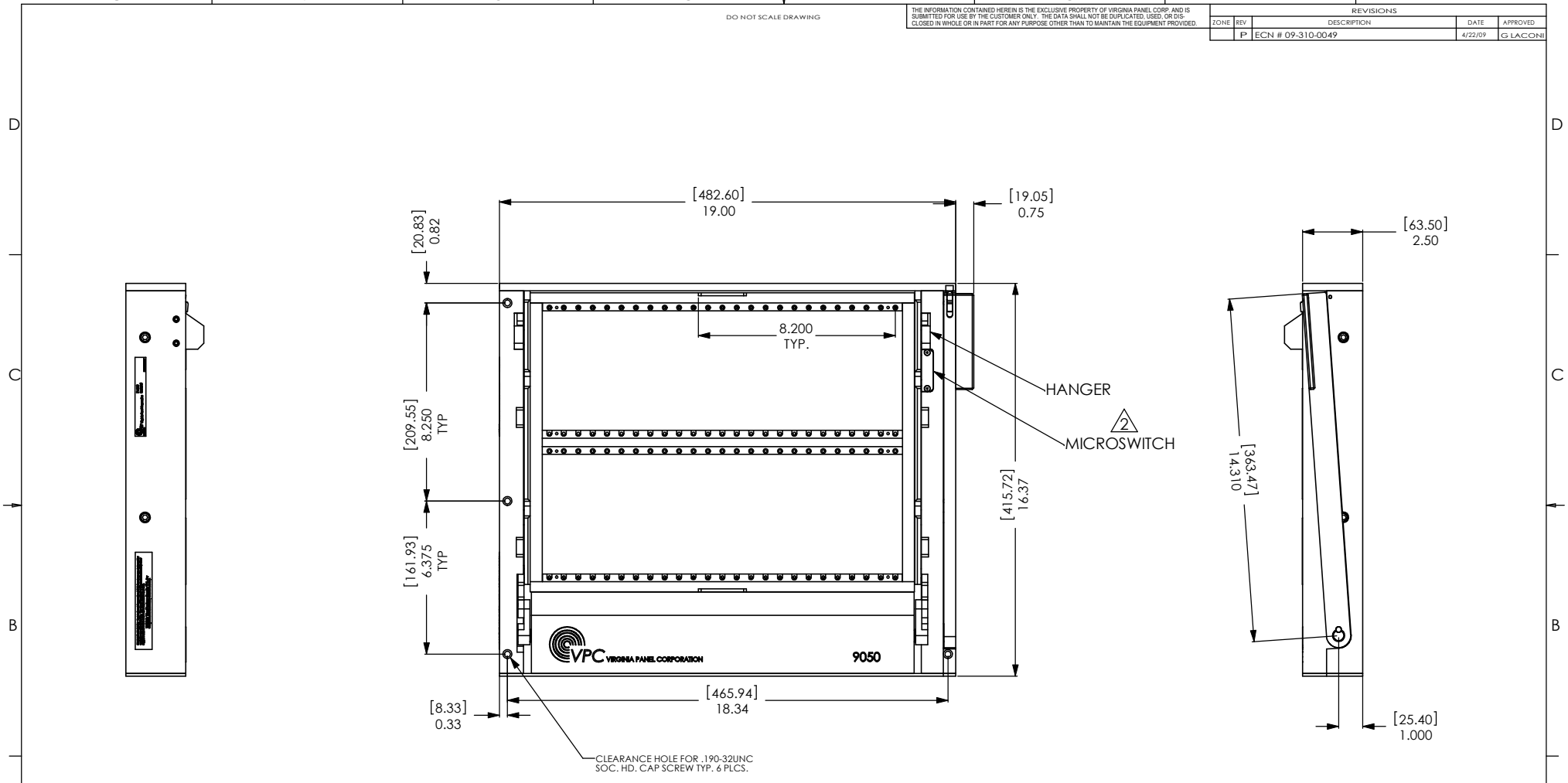


8 7 6 5 4 3 2 1

DO NOT SCALE DRAWING

THE INFORMATION CONTAINED HEREIN IS THE EXCLUSIVE PROPERTY OF VIRGINIA PANEL CORP. AND IS SUBMITTED FOR USE BY THE CUSTOMER ONLY. THE DATA SHALL NOT BE DUPLICATED, USED, OR DISCLOSED IN WHOLE OR IN PART FOR ANY PURPOSE OTHER THAN TO MAINTAIN THE EQUIPMENT PROVIDED.

REVISIONS				
ZONE	REV	DESCRIPTION	DATE	APPROVED
P		ECN # 09-310-0049	4/22/09	G LACONI



3. (1) 3/32 ALLEN WRENCH INCLUDED FOR MODULE MOUNTING.

△ MICROSWITCH WIRING: N/C - RED
N/O - WHITE
COM - BLACK

1. FOR APPLICATION, USE & CARE INFORMATION CONSULT VPC USERS GUIDE @WWW.VPC.COM.

NOTES:

MATING I/A	PROTECTIVE COVER	VERTICAL HINGE MOUNTING FRAME
410104110	310113151	310113184
410104111		

CUSTOMER DRAWING - CUSTOMER DRAWING - CUSTOMER DRAWING			
DIMENSIONS ARE SHOWN AS: [millimeters] INCHES	CONTRACT NO.		VIRGINIA PANEL CORPORATION www.vpc.com
	SIGNATURES	DATE	
	DR B. MYRICK	9/21/04	
	CHK		
REMOVE BURRS, BREAK SHARP EDGES	ENG		
MATERIAL	PROD		
	ASSY		
FINISH	Q/A		
	APFD		
REF: D	CAGE CODE 18117	DWG NO. 310104115	REV P
			1 OF 1

8 7 6 5 4 3 2 1