

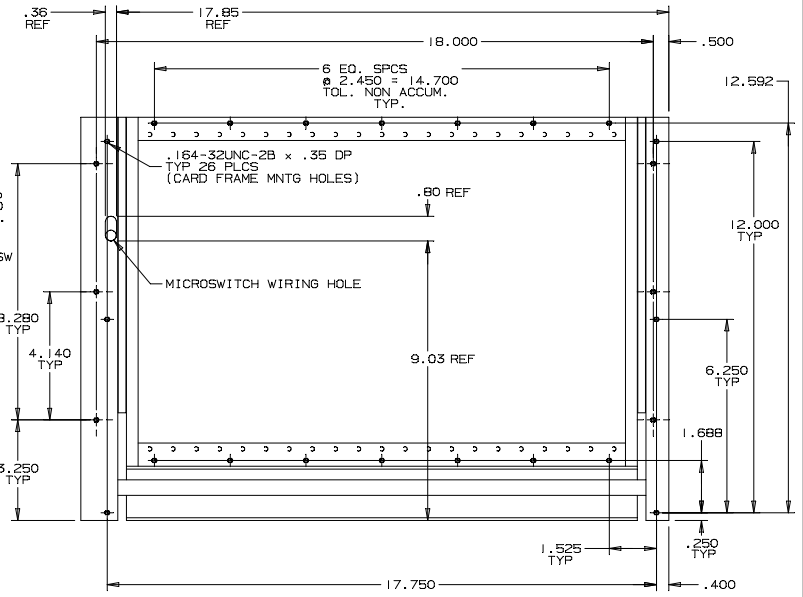
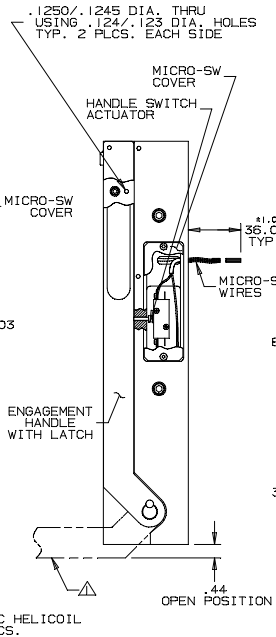
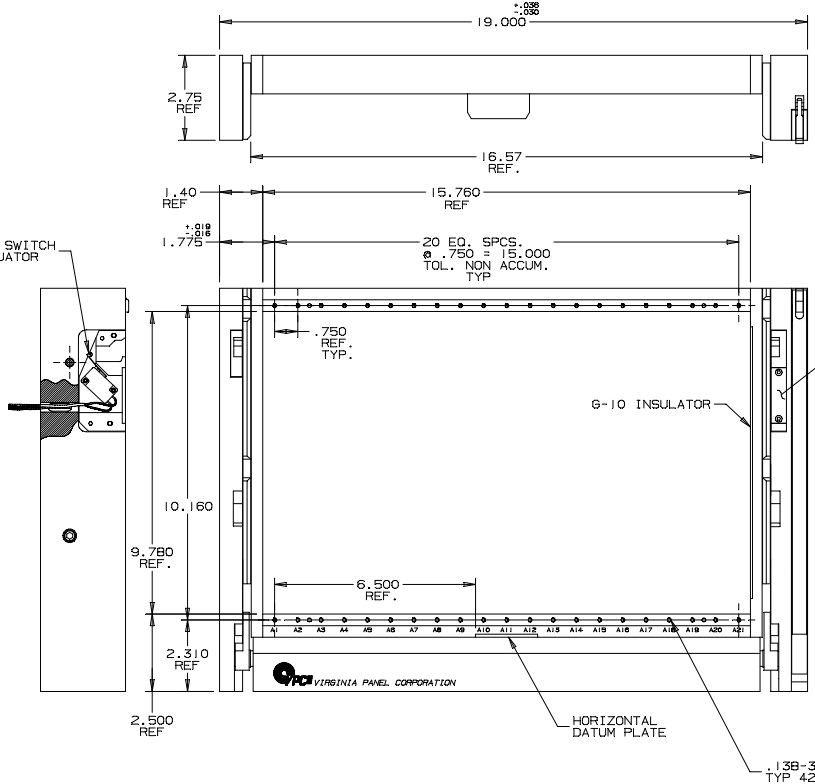
8 7 6 5 4 3 2 1

DO NOT SCALE DRAWING

THE INFORMATION CONTAINED HEREIN IS THE EXCLUSIVE PROPERTY OF VIRGINIA PANEL CORP. AND IS SUBMITTED FOR USE BY THE CUSTOMER ONLY. THE DATA SHALL NOT BE REPRODUCED, USED, OR DISCLOSED IN WHOLE OR IN PART FOR ANY PURPOSE OTHER THAN TO MAINTAIN THE EQUIPMENT PROVIDED.

REVISIONS				
ZONE	REV	DESCRIPTION	DATE	APPROVED
C		INCORPORATED ECN #1986	10/16/97	RG

D
C
B
A



CUSTOMER DRAWING

310105110

RECEIVER MECHANISM HANDLE EXTENDS 10.47 INCHES BEYOND THE FRONT SURFACE OF RECEIVER MECHANISM WHEN IN THE FULLY OPEN (DOWN) POSITION.

NOTES:



ITA WIRING CODE	
BLACK	COMMON
BROWN	NORMALLY OPEN
WHITE	NORMALLY CLOSED

HANDLE WIRING CODE	
GREEN	NO4 (COM)
YELLOW	NO3 (NO)

FIND NO.	QTY REQD	CODE IDENT	PART NO.	DESCRIPTION	SOURCE OF SUPPLY
PARTS LIST					
TOLERANCES ON HOLES UNLESS SPECIFIED		DIMENSIONS ARE IN INCHES UNLESS OTHERWISE SPECIFIED.		CONTRACT NO.	
HOLE DIA.	TOLERANCE	DR	DR	SIGNATURES	DATE
.015 TO .042	+.003/-.002	DEC. XXX4	O/B	FRAC±	M DOLFI 6/2/95
.043 TO .093	+.004/-.002	.XXX4	O/B	ANG ±	CHK R GARMAN 6/8/95
.0935 TO .158	+.005/-.002	REMOVE BURRS, BREAK SHARP EDGES.		ENG	M DOLFI 6/2/95
.1582 TO .2598	+.006/-.002	MATERIAL		PROD	
.259 TO .4219	+.007/-.002	FINISH		ASSY	
.4375 TO .6094	+.008/-.002			O A	
.625 TO .75	+.009/-.002			R GARMAN	6/8/95
.7556 TO .8437	+.009/-.003			APPD	
.8584 TO 2.000	+.010/-.003				

VIRGINIA PANEL CORP.	
RECEIVER, .750 CENTERS 21 MODULE	
SIZE/FSCM NO. D18117	DWG NO. 4310 38 000
SCALE: 1/2	6/2/95 SHEET 1 OF 1

8 7 6 5 4 3 2 1