

4

3

2

1

DO NOT SCALE DRAWING

THE INFORMATION CONTAINED HEREIN IS THE EXCLUSIVE PROPERTY OF VIRGINIA PANEL CORPORATION AND IS SUBMITTED FOR USE BY THE CUSTOMER ONLY. THE DATA SHALL NOT BE DUPLICATED, USED, OR DISCLOSED IN WHOLE OR IN PART FOR ANY PURPOSE OTHER THAN TO MAINTAIN THE EQUIPMENT PROVIDED. CONSULT WITH VIRGINIA PANEL CORPORATION ENGINEERING IF MORE DETAIL IS REQUIRED.

REV		DESCRIPTION	DATE	ENGR
B	ECN #07-310-0130		12/17/07	R HERRON

D

C

B

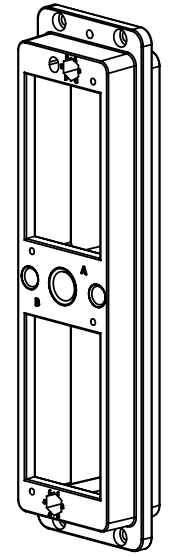
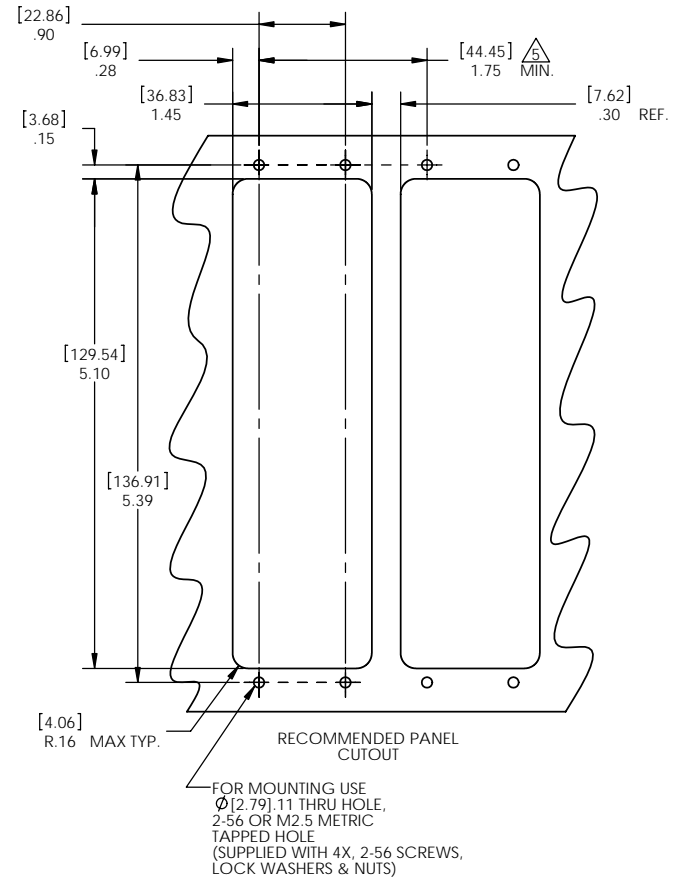
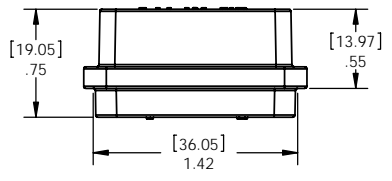
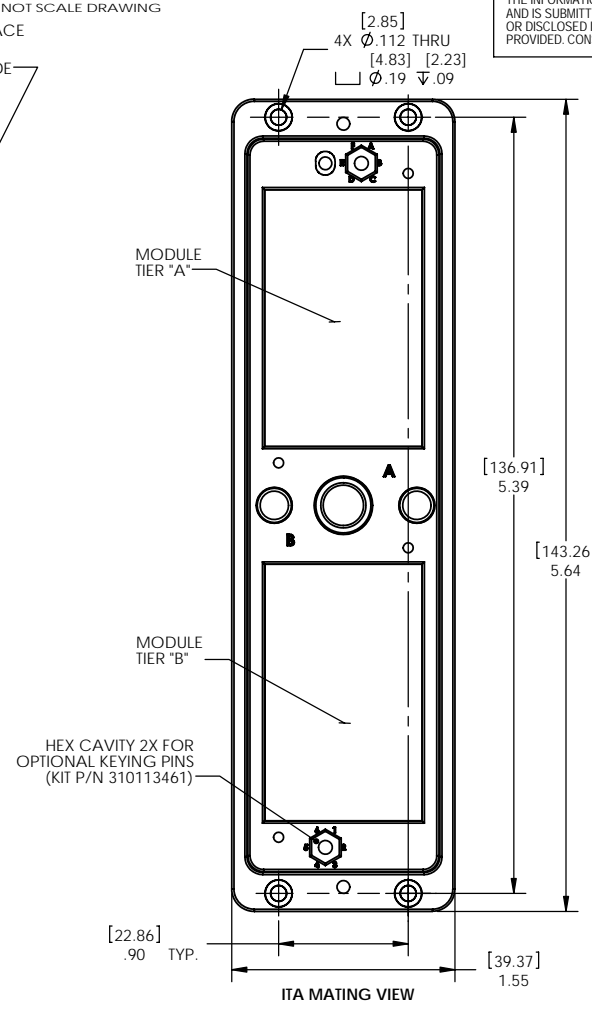
A

D

C

B

A



FOR SIDE BY SIDE MOUNTING, MINIMUM DISTANCE APPLIES FOR SUBSEQUENT CUTOUTS WHEN USING THE EMI VERSION ADD AN ADDITIONAL .450" TO THE SPACING

- 4. PROTECTIVE COVER INCLUDED WITH ASSEMBLY (NOT SHOWN)
- 3. MOUNTING HARDWARE SHIPPED LOOSE IN BAG
- 2. MATERIALS:
 FRAME: ALUMINUM ALLOY - NI PLATED
 HARDWARE - STAINLESS STEEL ALLOY
 PROTECTIVE COVER - BLACK THERMOPLASTIC
- 1. FOR APPLICATION USE & CARE INFORMATION CONSULT VPC USERS GUIDE @WWW.VPC.COM

NOTES:

CUSTOMER DRAWING			
VIRGINIA PANEL CORPORATION WWW.VPC.COM			
RECEIVER, ICON			
DIMENSIONS ARE SHOWN AS:	SIZE	CAGE CODE	DWG. NO.
[MILLIMETERS]	C	18117	310123101
INCHES			
SCALE: 1:1	310123101	8/24/06	SHEET 1

4

3

2

1