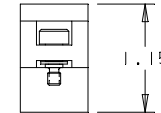
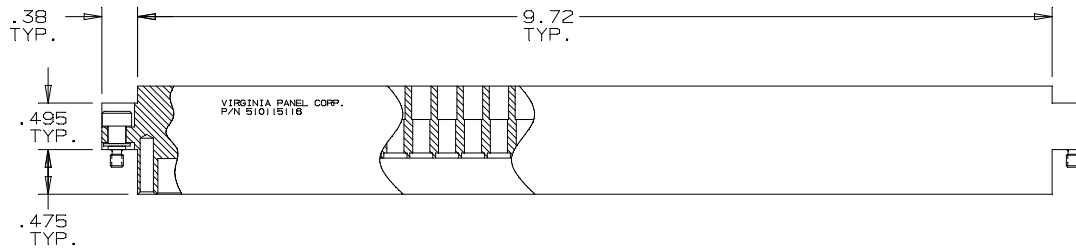
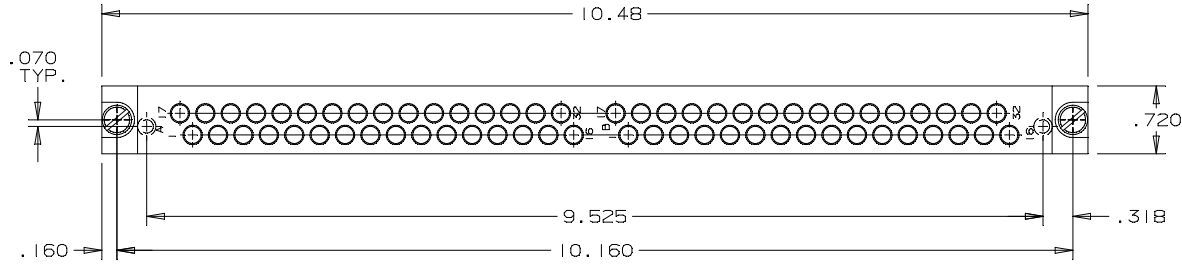


DO NOT SCALE DRAWING

THE INFORMATION CONTAINED HEREIN IS THE EXCLUSIVE PROPERTY OF VIRGINIA PANEL CORP. AND IS SUBMITTED FOR USE BY THE CUSTOMER ONLY. THE DATA SHALL NOT BE DUPLICATED, USED, OR DISCLOSED IN WHOLE OR IN PART FOR ANY PURPOSE OTHER THAN TO MAINTAIN THE EQUIPMENT PROVIDED.

REVISIONS

ZONE	REV	DESCRIPTION	DATE	APPROVED
	B	INCORPORATED ECN # 1020	5/24/93	EHM



510115116

CUSTOMER DRAWING

TOLERANCES ON HOLES UNLESS SPECIFIED		DIMENSIONS ARE IN INCHES UNLESS OTHERWISE SPECIFIED.		CONTRACT NO.	
HOLE DIA.	TOLERANCE	TOLERANCES ARE:	DEC. XXX ±	FRAC ±	DATE
.0135 TO .042	+ .003/- .002	DEC. XXX ±	.02	FRAC ±	1/22/92
.043 TO .093	+ .004/- .002	XXX ±	.010	ANG ±	
.0935 TO .156	+ .005/- .002	REMOVE BURRS, BREAK SHARP EDGES			
.1562 TO .2656	+ .006/- .002	MATERIAL			
.266 TO .4219	+ .007/- .002	FINISH			
.4375 TO .6094	+ .008/- .002	SIGNATURES			
.625 TO .75	+ .009/- .002	DR <i>R. GARMAN</i>			
.7656 TO .8437	+ .009/- .003	CHK <i>H. B.</i>			
.8594 TO 2.000	+ .010/- .003	ENG			
		APPD <i>H. BURGERS</i>			
		DATE 1/22/92			
VIRGINIA PANEL CORP.					
ITA MODULE ASSEMBLY					
64 PIN ARINC					
SIZE	FSCM NO.	DWG. NO.	REV		
C	1817	4320 19 000	B		
SCALE: 1:1 43201900 5/24/93 SHEET 1 OF 1					