

4

3

2

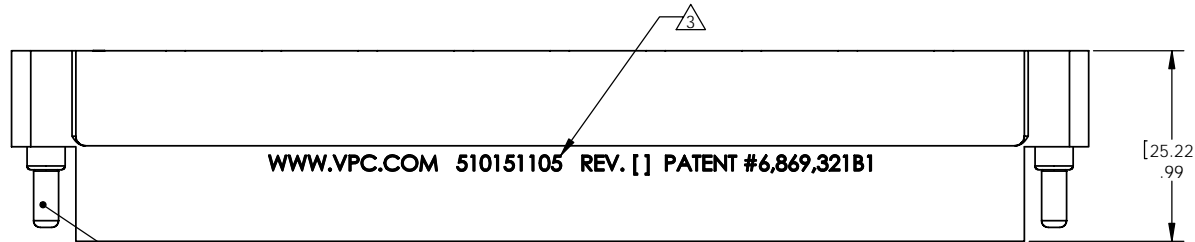
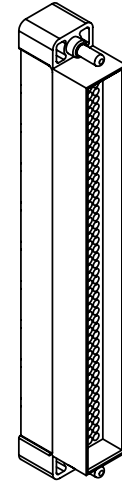
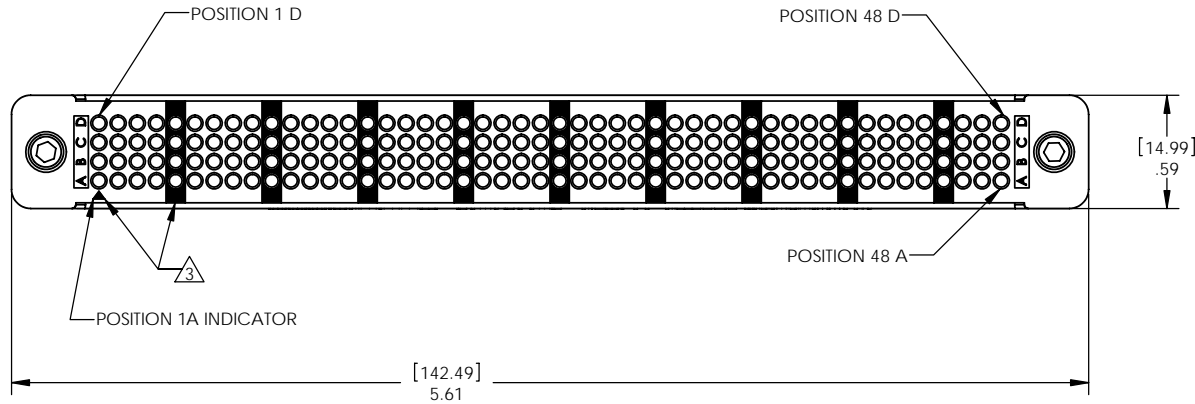
1

DO NOT SCALE DRAWING

THE INFORMATION CONTAINED HEREIN IS THE EXCLUSIVE PROPERTY OF VIRGINIA PANEL CORP. AND IS SUBMITTED FOR USE BY THE CUSTOMER ONLY. THE DATA SHALL NOT BE DUPLICATED, USED, OR DISCLOSED IN WHOLE OR IN PART FOR ANY PURPOSE OTHER THAN TO MAINTAIN THE EQUIPMENT PROVIDED. CONSULT WITH VIRGINIA PANEL CORPORATION ENGINEERING IF MORE DETAIL IS REQUIRED.

REVISIONS

ZONE	REV	DESCRIPTION	DATE	APPROVED
	D	ECN #07-510-0247	12/19/07	RLH



REMOVE BOOT FROM SCREW AND DISCARD BEFORE INSTALLATION INTO RECEIVER TYP. 2 PLCS.

- 3 SHADED AREAS REPRESENT PRINTED FEATURES OF THE MODULE
- 2 PHYSICAL CHARACTERISTICS:
WEIGHT - 1.63 OUNCES
MATERIALS:
MODULE BODY - BLACK LIQUID CRYSTAL POLYMER (LCP)
MOUNTING HARDWARE - STAINLESS STEEL
- 1. FOR APPLICATION, USE & CARE INFORMATION CONSULT VPC USERS GUIDE @WWW.VPC.COM

NOTES:

CUSTOMER DRAWING - CUSTOMER DRAWING

SOLIDWORKS DRAWING FILE	DIMENSIONS ARE SHOWN AS:		SIGNATURES		DATE	VIRGINIA PANEL CORPORATION WWW.VPC.COM		
	(millimeters) INCHES		DR	R. HERRON	2/18/03			
	REMOVE BURRS - BREAK SHARP EDGES		CHK			SIGNAL MODULE, ITA, QUADRAPADDLE 192 POSITION, UNLOADED		
	MATERIAL 2		ENG					
FINISH		PROD			SIZE	FSCM NO.	DWG. NO.	REV
		APPD			C	18117	510151105	D
					SCALE: NONE	2/18/03	510151105	SHEET 1 OF 1

4

3

2

1