

4

3

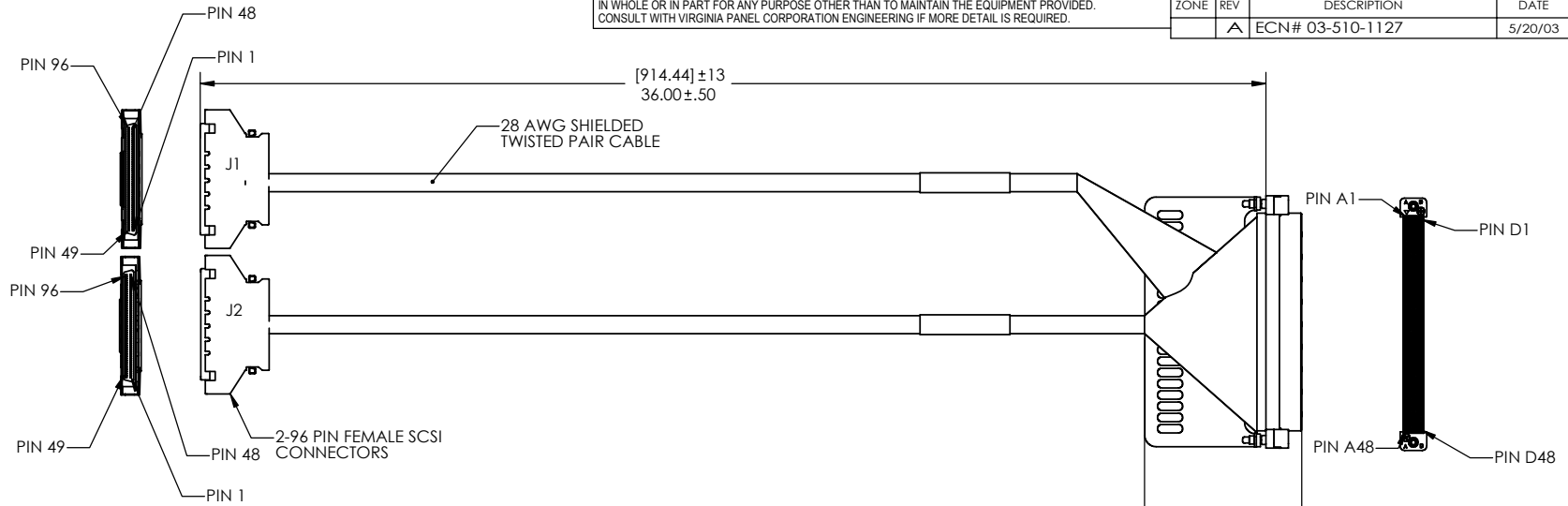
2

1

DO NOT SCALE DRAWING

THE INFORMATION CONTAINED HEREIN IS THE EXCLUSIVE PROPERTY OF VIRGINIA PANEL CORP. AND IS SUBMITTED FOR USE BY THE CUSTOMER ONLY. THE DATA SHALL NOT BE DUPLICATED, USED, OR DISCLOSED IN WHOLE OR IN PART FOR ANY PURPOSE OTHER THAN TO MAINTAIN THE EQUIPMENT PROVIDED. CONSULT WITH VIRGINIA PANEL CORPORATION ENGINEERING IF MORE DETAIL IS REQUIRED.

REVISIONS				
ZONE	REV	DESCRIPTION	DATE	APPROVED
	A	ECN# 03-510-1127	5/20/03	



VPC MODULE 510150115	SC X196PIN CONNECTOR J1	VPC MODULE 510150115	SC X196PIN CONNECTOR J1	VPC MODULE 510104115 J1	SC X196PIN CONNECTOR J1	VPC MODULE 510104115	SC X196PIN CONNECTOR J1
PIN A 1	PIN 1	PIN A 26	PIN 26	PIN B 3	PIN 51	PIN B 28	PIN 76
PIN A 2	PIN 2	PIN A 27	PIN 27	PIN B 4	PIN 52	PIN B 29	PIN 77
PIN A 3	PIN 3	PIN A 28	PIN 28	PIN B 5	PIN 53	PIN B 30	PIN 78
PIN A 4	PIN 4	PIN A 29	PIN 29	PIN B 6	PIN 54	PIN B 31	PIN 79
PIN A 5	PIN 5	PIN A 30	PIN 30	PIN B 7	PIN 55	PIN B 32	PIN 80
PIN A 6	PIN 6	PIN A 31	PIN 31	PIN B 8	PIN 56	PIN B 33	PIN 81
PIN A 7	PIN 7	PIN A 32	PIN 32	PIN B 9	PIN 57	PIN B 34	PIN 82
PIN A 8	PIN 8	PIN A 33	PIN 33	PIN B 10	PIN 58	PIN B 35	PIN 83
PIN A 9	PIN 9	PIN A 34	PIN 34	PIN B 11	PIN 59	PIN B 36	PIN 84
PIN A 10	PIN 10	PIN A 35	PIN 35	PIN B 12	PIN 60	PIN B 37	PIN 85
PIN A 11	PIN 11	PIN A 36	PIN 36	PIN B 13	PIN 61	PIN B 38	PIN 86
PIN A 12	PIN 12	PIN A 37	PIN 37	PIN B 14	PIN 62	PIN B 39	PIN 87
PIN A 13	PIN 13	PIN A 38	PIN 38	PIN B 15	PIN 63	PIN B 40	PIN 88
PIN A 14	PIN 14	PIN A 39	PIN 39	PIN B 16	PIN 64	PIN B 41	PIN 89
PIN A 15	PIN 15	PIN A 40	PIN 40	PIN B 17	PIN 65	PIN B 42	PIN 90
PIN A 16	PIN 16	PIN A 41	PIN 41	PIN B 18	PIN 66	PIN B 43	PIN 91
PIN A 17	PIN 17	PIN A 42	PIN 42	PIN B 19	PIN 67	PIN B 44	PIN 92
PIN A 18	PIN 18	PIN A 43	PIN 43	PIN B 20	PIN 68	PIN B 45	PIN 93
PIN A 19	PIN 19	PIN A 44	PIN 44	PIN B 21	PIN 69	PIN B 46	PIN 94
PIN A 20	PIN 20	PIN A 45	PIN 45	PIN B 22	PIN 70	PIN B 47	PIN 95
PIN A 21	PIN 21	PIN A 46	PIN 46	PIN B 23	PIN 71	PIN B 48	PIN 96
PIN A 22	PIN 22	PIN A 47	PIN 47	PIN B 24	PIN 72		
PIN A 23	PIN 23	PIN A 48	PIN 48	PIN B 25	PIN 73		
PIN A 24	PIN 24	PIN B 1	PIN 49	PIN B 26	PIN 74		
PIN A 25	PIN 25	PIN B 2	PIN 50	PIN B 27	PIN 75		

1. FOR APPLICATION, USE & CARE INFORMATION CONSULT VPC USERS GUIDE @WWW.VPC.COM

NOTES:

CUSTOMER DRAWING - CUSTOMER DRAWING

SOLIDWORKS DRAWING FILE	DIMENSIONS ARE SHOWN AS: (millimeters) INCHES		SIGNATURES DR: E HUBBARD		DATE 5/20/03	VIRGINIA PANEL CORPORATION WWW.VPC.COM			
	REMOVE BURRS, BREAK SHARP EDGES		ENG			CABLE ASM 1-192 PIN RCVR MODULE TO 2-96 PIN FEMALE SCSI, 36"			
	MATERIAL		PROD			SIZE C	FSCM.NO. 18117	DWG.NO. 540033010240	REV A
	FINISH		APPD			SCALE: NONE	5/20/03	540033010240	SHEET 1 OF 2

4

3

2

1

DO NOT SCALE DRAWING

THE INFORMATION CONTAINED HEREIN IS THE EXCLUSIVE PROPERTY OF VIRGINIA PANEL CORP. AND IS SUBMITTED FOR USE BY THE CUSTOMER ONLY. THE DATA SHALL NOT BE DUPLICATED, USED, OR DISCLOSED IN WHOLE OR IN PART FOR ANY PURPOSE OTHER THAN TO MAINTAIN THE EQUIPMENT PROVIDED. CONSULT WITH VIRGINIA PANEL CORPORATION ENGINEERING IF MORE DETAIL IS REQUIRED.

REVISIONS				
ZONE	REV	DESCRIPTION	DATE	APPROVED
	A	ECN# 03-510-1127	5/20/03	

VPC MODULE 510150115	SCXI96PIN CONNECTOR J2	VPC MODULE 510150115	SCXI96PIN CONNECTOR J2	VPC MODULE 510104115	SCXI96PIN CONNECTOR J2	VPC MODULE 510104115	SCXI96 PIN CONNECTOR J2
PIN C1	PIN 1	PIN C26	PIN 26	PIN D3	PIN 51	PIN D28	PIN 76
PIN C2	PIN 2	PIN C27	PIN 27	PIN D4	PIN 52	PIN D29	PIN 77
PIN C3	PIN 3	PIN C28	PIN 28	PIN D5	PIN 53	PIN D30	PIN 78
PIN C4	PIN 4	PIN C29	PIN 29	PIN D6	PIN 54	PIN D31	PIN 79
PIN C5	PIN 5	PIN C30	PIN 30	PIN D7	PIN 55	PIN D32	PIN 80
PIN C6	PIN 6	PIN C31	PIN 31	PIN D8	PIN 56	PIN D33	PIN 81
PIN C7	PIN 7	PIN C32	PIN 32	PIN D9	PIN 57	PIN D34	PIN 82
PIN C8	PIN 8	PIN C33	PIN 33	PIN D10	PIN 58	PIN D35	PIN 83
PIN C9	PIN 9	PIN C34	PIN 34	PIN D11	PIN 59	PIN D36	PIN 84
PIN C10	PIN 10	PIN C35	PIN 35	PIN D12	PIN 60	PIN D37	PIN 85
PIN C11	PIN 11	PIN C36	PIN 36	PIN D13	PIN 61	PIN D38	PIN 86
PIN C12	PIN 12	PIN C37	PIN 37	PIN D14	PIN 62	PIN D39	PIN 87
PIN C13	PIN 13	PIN C38	PIN 38	PIN D15	PIN 63	PIN D40	PIN 88
PIN C14	PIN 14	PIN C39	PIN 39	PIN D16	PIN 64	PIN D41	PIN 89
PIN C15	PIN 15	PIN C40	PIN 40	PIN D17	PIN 65	PIN D42	PIN 90
PIN C16	PIN 16	PIN C41	PIN 41	PIN D18	PIN 66	PIN D43	PIN 91
PIN C17	PIN 17	PIN C42	PIN 42	PIN D19	PIN 67	PIN D44	PIN 92
PIN C18	PIN 18	PIN C43	PIN 43	PIN D20	PIN 68	PIN D45	PIN 93
PIN C19	PIN 19	PIN C44	PIN 44	PIN D21	PIN 69	PIN D46	PIN 94
PIN C20	PIN 20	PIN C45	PIN 45	PIN D22	PIN 70	PIN D47	PIN 95
PIN C21	PIN 21	PIN C46	PIN 46	PIN D23	PIN 71	PIN D48	PIN 96
PIN C22	PIN 22	PIN C47	PIN 47	PIN D24	PIN 72		
PIN C23	PIN 23	PIN C48	PIN 48	PIN D25	PIN 73		
PIN C24	PIN 24	PIN D1	PIN 49	PIN D26	PIN 74		
PIN C25	PIN 25	PIN D2	PIN 50	PIN D27	PIN 75		

1 FOR APPLICATION, USE & CARE INFORMATION
CONSULT VPC USERS GUIDE @WWW.VPC.COM

NOTES:

CUSTOMER DRAWING - CUSTOMER DRAWING								
SOLIDWORKS DRAWING FILE	DIMENSIONS ARE SHOWN AS: (millimeters) INCHES		SIGNATURES	DATE	VIRGINIA PANEL CORPORATION WWW.VPC.COM CABLE ASM 1-192 PIN RCVR MODULE TO 2-96 PIN FEMALE SCSI 36"			
	DR	E. HUBBARD	5/20/03					
	CHK							
	ENG							
	PROD							
MATERIAL	ASSY				SIZE	FSCM.NO.	DWG.NO.	REV
FINISH	Q A				C	18117	540033010240	A
	APPD				SCALE: NONE			SHEET 2 OF 2