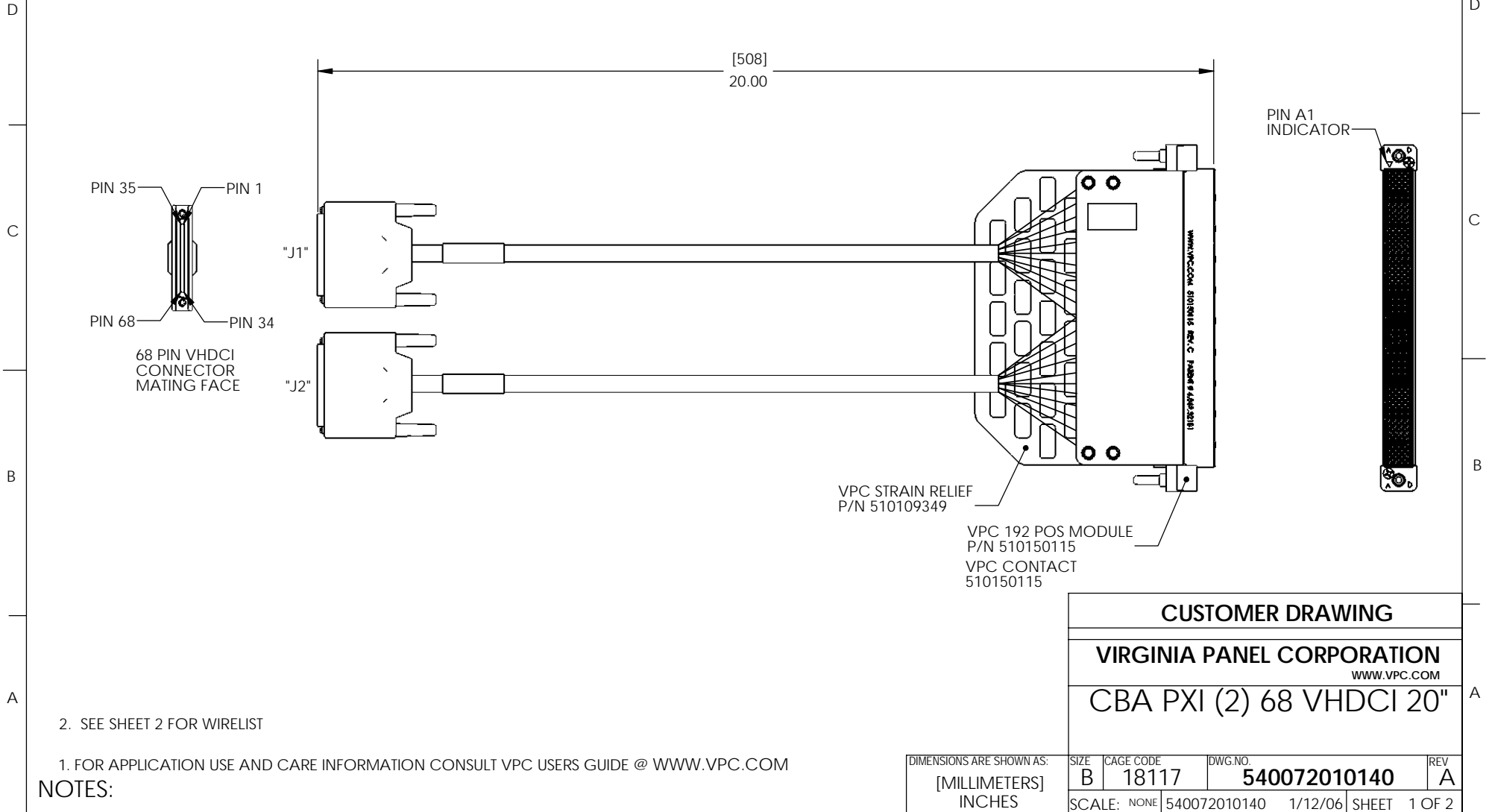


DO NOT SCALE DRAWING

THE INFORMATION CONTAINED HEREIN IS THE EXCLUSIVE PROPERTY OF VIRGINIA PANEL CORPORATION AND IS SUBMITTED FOR USE BY THE CUSTOMER ONLY. THE DATA SHALL NOT BE DUPLICATED, USED, OR DISCLOSED IN WHOLE OR IN PART FOR ANY PURPOSE OTHER THAN TO MAINTAIN THE EQUIPMENT PROVIDED. CONSULT WITH VIRGINIA PANEL CORPORATION ENGINEERING IF MORE DETAIL IS REQUIRED.

REVISIONS			
REV	DESCRIPTION	DATE	ENGR
A	ORIGINAL RELEASE - ECN #06-540-0004	1/12/06	L HARMAN



2. SEE SHEET 2 FOR WIRELIST

1. FOR APPLICATION USE AND CARE INFORMATION CONSULT VPC USERS GUIDE @ WWW.VPC.COM

NOTES:

CUSTOMER DRAWING

VIRGINIA PANEL CORPORATION
WWW.VPC.COM

CBA PXI (2) 68 VHDCI 20"

DIMENSIONS ARE SHOWN AS:	SIZE	CAGE CODE	DWG. NO.	REV
[MILLIMETERS]	B	18117	540072010140	A
INCHES	SCALE: NONE	540072010140	1/12/06	SHEET 1 OF 2

4

3

2

1

DO NOT SCALE DRAWING

THE INFORMATION CONTAINED HEREIN IS THE EXCLUSIVE PROPERTY OF VIRGINIA PANEL CORPORATION AND IS SUBMITTED FOR USE BY THE CUSTOMER ONLY. THE DATA SHALL NOT BE DUPLICATED, USED, OR DISCLOSED IN WHOLE OR IN PART FOR ANY PURPOSE OTHER THAN TO MAINTAIN THE EQUIPMENT PROVIDED. CONSULT WITH VIRGINIA PANEL CORPORATION ENGINEERING IF MORE DETAIL IS REQUIRED.

REVISIONS

REV	DESCRIPTION	DATE	ENGR
A	ORIGINAL RELEASE - ECN #06-540-0004	1/12/06	L HARMAN

VPC MODULE	68 PIN VHDCI "J1"		VPC MODULE	68 PIN VHDCI "J1"	
A1	1	-T/P #1	C1	35	-T/P #18
A2	2		C2	36	
A3	3	-T/P #2	C3	37	-T/P #19
A4	4		C4	38	
A5	5	-T/P #3	C5	39	-T/P #20
A6	6		C6	40	
A7	7	-T/P #4	C7	41	-T/P #21
A8	8		C8	42	
A9	9	-T/P #5	C9	43	-T/P #22
A10	10		C10	44	
A11	11	-T/P #6	C11	45	-T/P #23
A12	12		C12	46	
A13	13	-T/P #7	C13	47	-T/P #24
A14	14		C14	48	
A15	15	-T/P #8	C15	49	-T/P #25
A16	16		C16	50	
A17	17	-T/P #9	C17	51	-T/P #26
B1	18		D1	52	
B2	19	-T/P #10	D2	53	-T/P #27
B3	20		D3	54	
B4	21	-T/P #11	D4	55	-T/P #28
B5	22		D5	56	
B6	23	-T/P #12	D6	57	-T/P #29
B7	24		D7	58	
B8	25	-T/P #13	D8	59	-T/P #30
B9	26		D9	60	
B10	27	-T/P #14	D10	61	-T/P #31
B11	28		D11	62	
B12	29	-T/P #15	D12	63	-T/P #32
B13	30		D13	64	
B14	31	-T/P #16	D14	65	-T/P #33
B15	32		D15	66	
B16	33	-T/P #17	D16	67	-T/P #34
B17	34		D17	68	

VPC MODULE	68 PIN VHDCI "J2"		VPC MODULE	68 PIN VHDCI "J2"	
A18	1	-T/P #1	C18	35	-T/P #18
A19	2		C19	36	
A20	3	-T/P #2	C20	37	-T/P #19
A21	4		C21	38	
A22	5	-T/P #3	C22	39	-T/P #20
A23	6		C23	40	
A24	7	-T/P #4	C24	41	-T/P #21
A25	8		C25	42	
A26	9	-T/P #5	C26	43	-T/P #22
A27	10		C27	44	
A28	11	-T/P #6	C28	45	-T/P #23
A29	12		C29	46	
A30	13	-T/P #7	C30	47	-T/P #24
A31	14		C31	48	
A32	15	-T/P #8	C32	49	-T/P #25
A33	16		C33	50	
A34	17	-T/P #9	C34	51	-T/P #26
B18	18		D18	52	
B19	19	-T/P #10	D19	53	-T/P #27
B20	20		D20	54	
B21	21	-T/P #11	D21	55	-T/P #28
B22	22		D22	56	
B23	23	-T/P #12	D23	57	-T/P #29
B24	24		D24	58	
B25	25	-T/P #13	D25	59	-T/P #30
B26	26		D26	60	
B27	27	-T/P #14	D27	61	-T/P #31
B28	28		D28	62	
B29	29	-T/P #15	D29	63	-T/P #32
B30	30		D30	64	
B31	31	-T/P #16	D31	65	-T/P #33
B32	32		D32	66	
B33	33	-T/P #17	D33	67	-T/P #34
B34	34		D34	68	

CUSTOMER DRAWING

VIRGINIA PANEL CORPORATION
WWW.VPC.COM

CBA PXI (2) 68 VHDCI 20"

1. FOR APPLICATION USE AND CARE INFORMATION CONSULT VPC USERS GUIDE @ WWW.VPC.COM
NOTES:

DIMENSIONS ARE SHOWN AS:		SIZE	CAGE CODE	DWG.NO.	REV
[MILLIMETERS]		B	18117	540072010140	A
INCHES		SCALE: NONE	540072010140	1/12/06	SHEET 2 OF 2

4

3

2

1