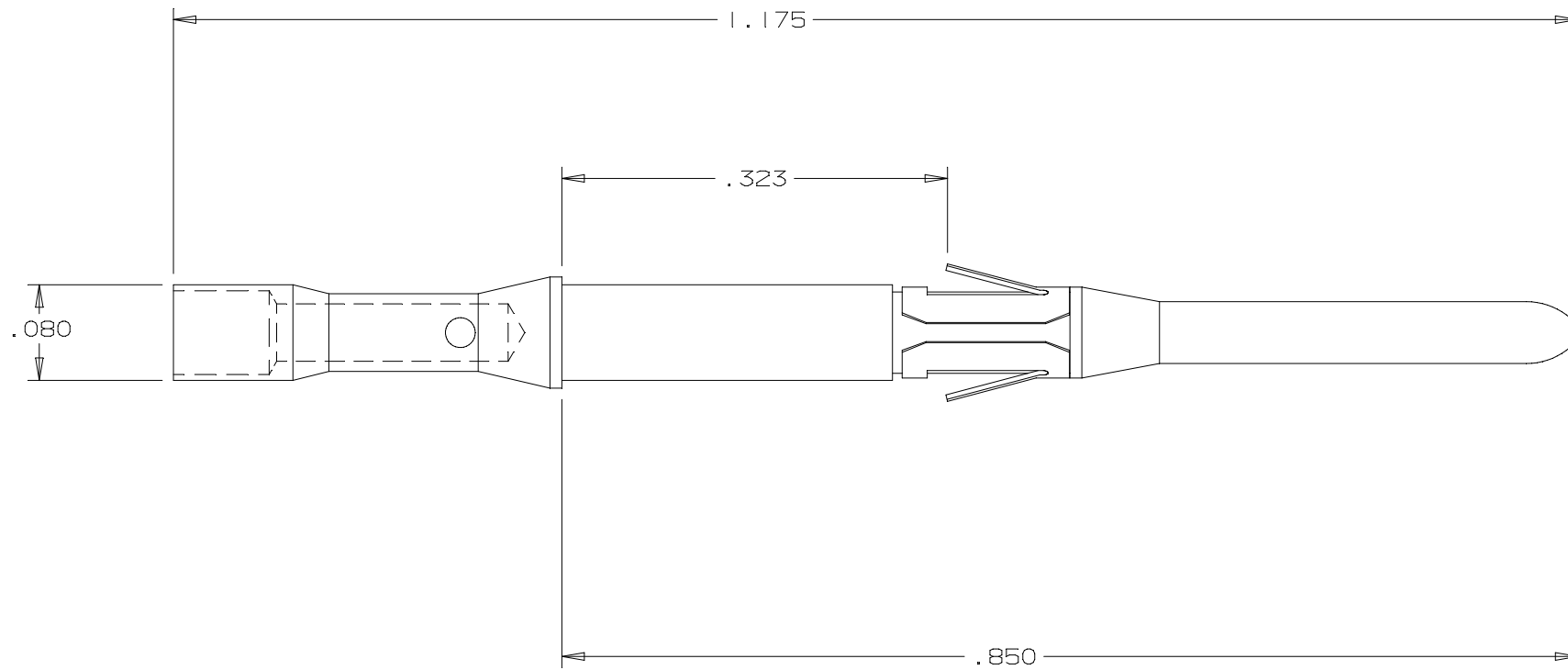


DO NOT SCALE DRAWING

THE INFORMATION CONTAINED HEREIN IS THE EXCLUSIVE PROPERTY OF VIRGINIA PANEL CORP. AND IS SUBMITTED FOR USE BY THE CUSTOMER ONLY. THE DATA SHALL NOT BE DUPLICATED, USED, OR DISCLOSED IN WHOLE OR IN PART FOR ANY PURPOSE OTHER THAN TO MAINTAIN THE EQUIPMENT PROVIDED.

REVISIONS				
ZONE	REV	DESCRIPTION	DATE	APPROVED
	D	ECN # 1390	1/16/95	PDBJ



PART NO	PLATING THICKNESS
610110108	.000030
610110146	.000050

△ MAT'L: PIN - 360 BRASS  
 FINISH - GOLD PLATE PER MIL-G-45204 THICKNESS  
 PER CHART TYPE II OVER .0001 Ni  
 RETAINER - BeCu 3325  
 FINISH - .0001 THK Ni PER QQ-N-290

1 FOR APPLICATION, CARE AND USE INFORMATION  
 PLEASE CONSULT VPC USERS GUIDE @ WWW.VPC.COM

NOTES:

CUSTOMER DRAWING		CUSTOMER DRAWING	
DIMENSIONS ARE SHOWN AS:		SIGNATURES	
INCHES		DR	TOM MOORE
MILIMETERS		CHK	
		ENG	
		PROD	
		ASSY	H BURGERS
		Q A	
		APPD	
		DATE	11/8/83
VIRGINIA PANEL CORP. WWW.VPC.COM			
MALE TRI-PADDLE ASSEMBLY SCREW MACHINE TYPE			
MATERIAL		SIZE	FSCM NO.
△ 2		C	18117
FINISH		DWG. NO.	3777 00 000
△ 2		REV	D
		SCALE: 10x	37770000 11/30/94 SHEET 1 OF 1