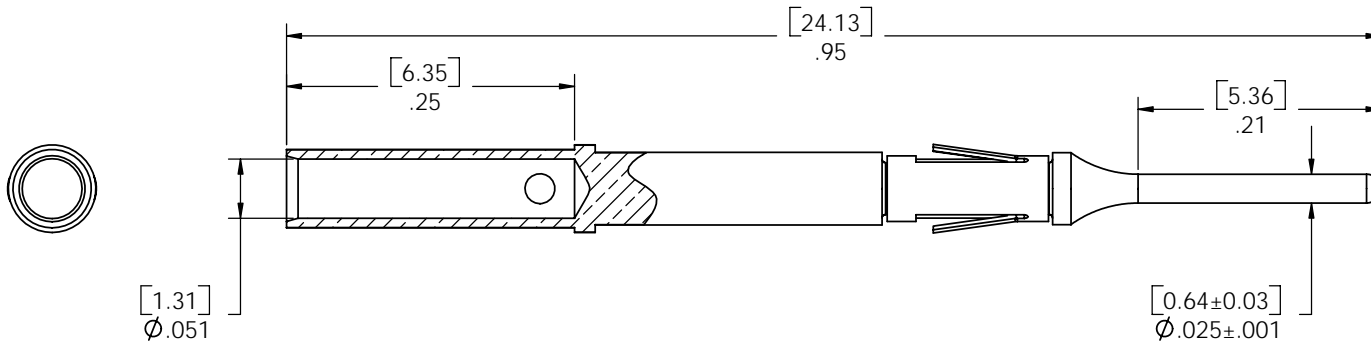
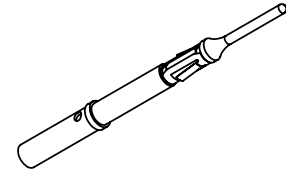


DO NOT SCALE DRAWING

THE INFORMATION CONTAINED HEREIN IS THE EXCLUSIVE PROPERTY OF VIRGINIA PANEL CORP. AND IS SUBMITTED FOR USE BY THE CUSTOMER ONLY. THE DATA SHALL NOT BE DUPLICATED, USED, OR DISCLOSED IN WHOLE OR IN PART FOR ANY PURPOSE OTHER THAN TO MAINTAIN THE EQUIPMENT PROVIDED. CONSULT WITH VIRGINIA PANEL CORPORATION ENGINEERING IF MORE DETAIL IS REQUIRED.

REVISIONS				
ZONE	REV	DESCRIPTION	DATE	APPROVED
	A	ORIGINAL RELEASE	5/14/02	
	B	ECN 03-610-0023	7/03/03	AHB
	C	ECN 03-610-0032	12/22/03	AHB
	D	ECN 04-610-001432	12/06/04	DMA



2 PHYSICAL CHARACTERISTICS:
 WEIHTG - .0005 lbs.
 MATERIALS:
 CONTACT - BRASS ALLOY
 RETAINING RING - BeCu ALLOY
 CONTACT PLATING - 30 μ INCHS Au OVER 100 μ INCHES NICKEL

1 FOR APPLICATION, USE & CARE INFORMATION
 CONSULT VPC USERS GUIDE @WWW.VPC.COM

NOTES:

CUSTOMER DRAWING - CUSTOMER DRAWING					
SOLIDWORKS DRAWING FILE	DIMENSIONS ARE SHOWN AS: (millimeters) INCHES		SIGNATURES		DATE
			DR	D. Ashby	5/14/02
			CHK		
			ENG		
MATERIAL		PROD			
		ASSY			
		O A			
FINISH		APPD			
		SCALE: NONE	5/14/02	610138109	SHEET 1 OF 1
VIRGINIA PANEL CORPORATION www.VPC.COM			CNT ML OPDL 22-24 Awg CMP ASM & Solderable 22-28 Awg		
SIZE	FSCM NO.	DWG. NO.	REV		
C	18117	610138109	D		