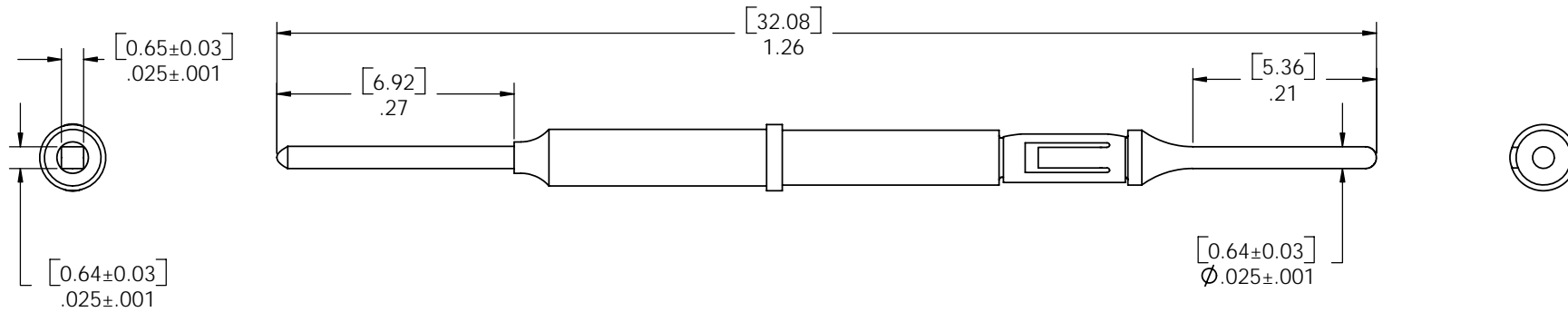
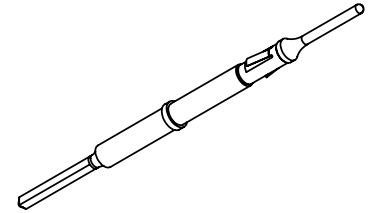


DO NOT SCALE DRAWING

THE INFORMATION CONTAINED HEREIN IS THE EXCLUSIVE PROPERTY OF VIRGINIA PANEL CORP. AND IS SUBMITTED FOR USE BY THE CUSTOMER ONLY. THE DATA SHALL NOT BE DUPLICATED, USED, OR DISCLOSED IN WHOLE OR IN PART FOR ANY PURPOSE OTHER THAN TO MAINTAIN THE EQUIPMENT PROVIDED. CONSULT WITH VIRGINIA PANEL CORPORATION ENGINEERING IF MORE DETAIL IS REQUIRED.

REVISIONS				
ZONE	REV	DESCRIPTION	DATE	APPROVED
	A	ORIGINAL RELEASE	11/26/02	
	B	ECN 03-610-0023	7/03/03	AHB
	C	ECN 04-610-0002	2/19/04	RLH
	D	ECN 04-610-0005	4/19/04	RLH
	E	ECN 04-610-0014	12/06/04	DMA



2 PHYSICAL CHARACTERISTICS:
 WEIGHT - .0008 lbs.
 MATERIALS:
 CONTACT - BRASS ALLOY
 RETAINING RING - BeCu ALLOY
 CONTACT PLATING - 30 μ INCHS Au OVER 100 μ INCHES NICKEL

1 FOR APPLICATION, USE & CARE INFORMATION
 CONSULT VPC USERS GUIDE @WWW.VPC.COM

NOTES:

CUSTOMER DRAWING - CUSTOMER DRAWING									
SOLIDWORKS DRAWING FILE	DIMENSIONS ARE SHOWN AS: (millimeters) INCHES		SIGNATURES		DATE	VIRGINIA PANEL CORPORATION WWW.VPC.COM			
			DR	R HERRON	11/26/02	CNT ML QPDL SQ POST WW ASM			
			CHK						
	REMOVE BURRS - BREAK SHARP EDGES		ENG			SIZE	FSCM NO.	DWG. NO.	REV
MATERIAL		PROD			C	18117	610138111	E	
FINISH		O A			SCALE: NONE	11/26/02	610138111	SHEET	1 OF 1
		APPD							