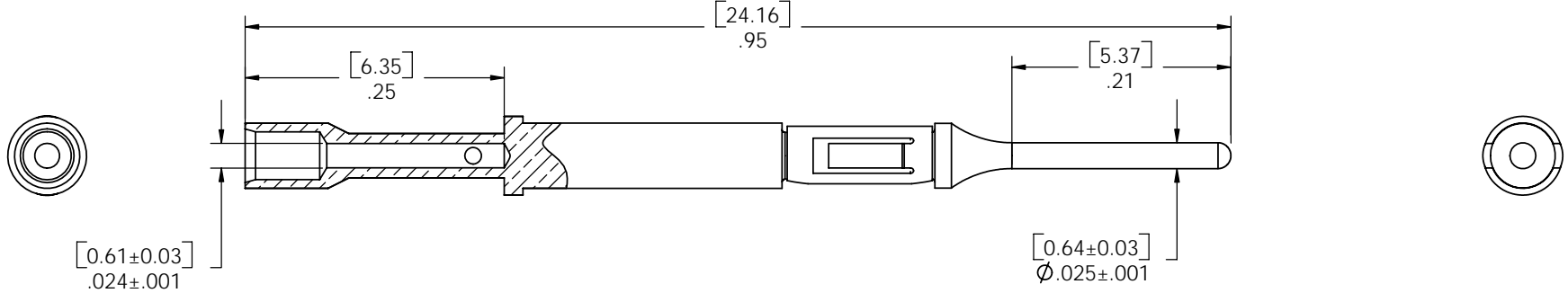


DO NOT SCALE DRAWING

THE INFORMATION CONTAINED HEREIN IS THE EXCLUSIVE PROPERTY OF VIRGINIA PANEL CORP. AND IS SUBMITTED FOR USE BY THE CUSTOMER ONLY. THE DATA SHALL NOT BE DUPLICATED, USED, OR DISCLOSED IN WHOLE OR IN PART FOR ANY PURPOSE OTHER THAN TO MAINTAIN THE EQUIPMENT PROVIDED. CONSULT WITH VIRGINIA PANEL CORPORATION ENGINEERING IF MORE DETAIL IS REQUIRED.

REVISIONS				
ZONE	REV	DESCRIPTION	DATE	APPROVED
	A	ORIGINAL RELEASE	11/26/02	
	B	ECN 03-610-0023	7/03/03	AHB
	C	ECN 03-610-0030	12/1/03	DMA
	D	ECN 04-610-0014	12/06/04	DMA



2 PHYSICAL CHARACTERISTICS:
 WEIGHT - .0005 lbs.
 MATERIALS:
 CONTACT - BRASS ALLOY
 RETAINING RING - BeCu ALLOY
 CONTACT PLATING - 30 μ INCHES Au OVER 100 μ INCHES NICKEL

1 FOR APPLICATION, USE & CARE INFORMATION
 CONSULT VPC USERS GUIDE @WWW.VPC.COM

NOTES:

CUSTOMER DRAWING - CUSTOMER DRAWING					
SOLIDWORKS DRAWING FILE	DIMENSIONS ARE SHOWN AS: (millimeters) INCHES	SIGNATURES		DATE	VIRGINIA PANEL CORPORATION WWW.VPC.COM
		DR	R. Herron	11/26/02	
	REMOVE BURRS - BREAK SHARP EDGES	CHK			CNT ML QPDL 26-28 Awg CMP ASM
	MATERIAL	ENG			
FINISH	PROD				
		ASSY			SIZE C 18117 FSCM NO. 610138112 DWG. NO. 610138112 REV D
		O A			SCALE: NONE 11/26/02 610138112 SHEET 1 OF 1
		APPD			