

DO NOT SCALE DRAWING

THE INFORMATION CONTAINED HEREIN IS THE EXCLUSIVE PROPERTY OF VIRGINIA PANEL CORP. AND IS SUBMITTED FOR USE BY THE CUSTOMER ONLY. THE DATA SHALL NOT BE DUPLICATED, USED, OR DISCLOSED IN WHOLE OR IN PART FOR ANY PURPOSE OTHER THAN TO MAINTAIN THE EQUIPMENT PROVIDED.

REVISIONS				
ZONE	REV	DESCRIPTION	DATE	APPROVED
	C	ECN #9763	1/9/2020	R GARMAN

2. INCLUDED MOUNTING HARDWARE: (4) 6-32 x .375 SOCKET HEAD CAP SCREWS, AND (4) #6 WASHERS.

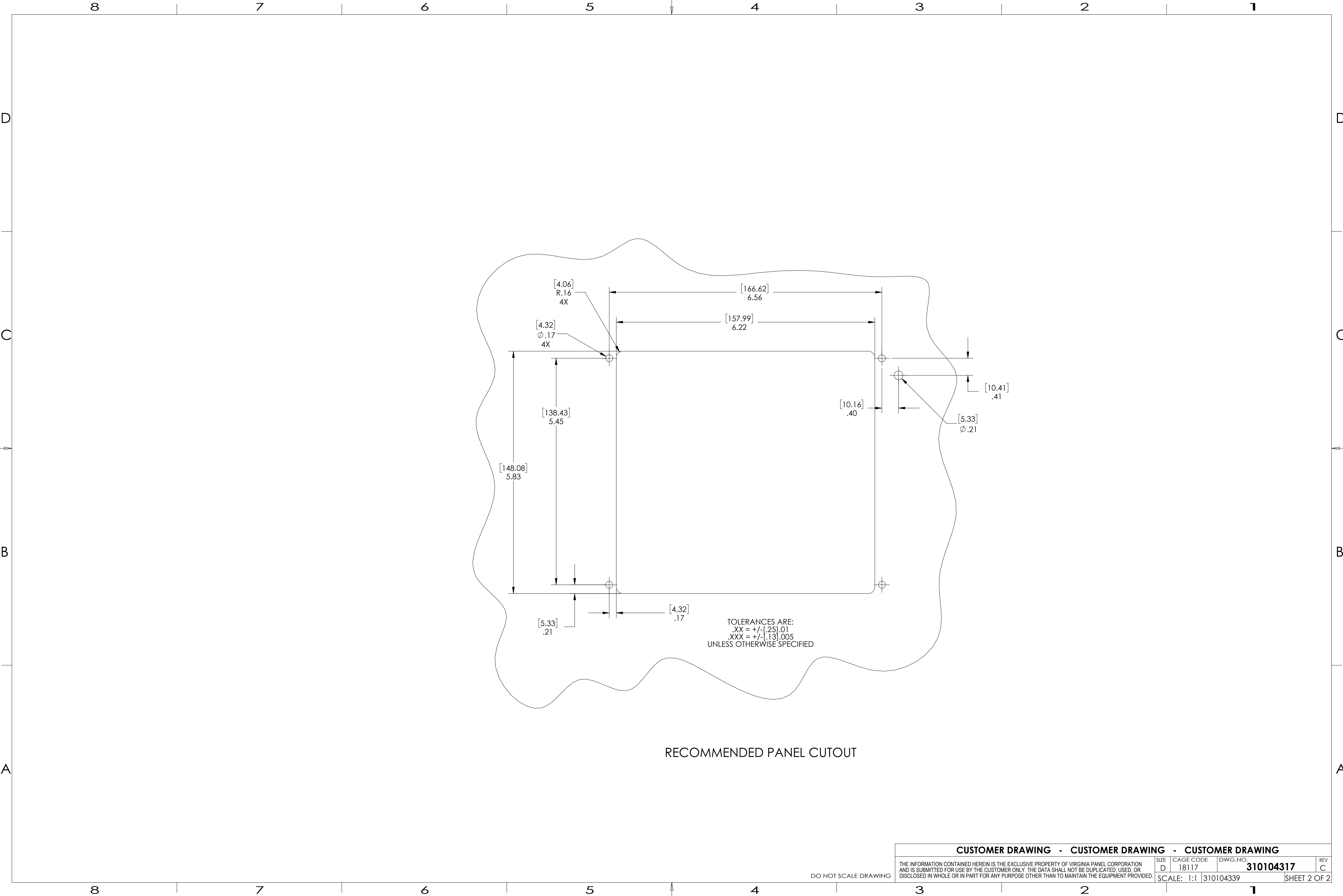
1. FOR APPLICATION, USE & CARE INFORMATION CONSULT VPC USERS GUIDE @WWW.VPC.COM.

NOTES:

MATING ITA P/N's	PROTECTIVE COVER P/N	VERTICAL HINGE MOUNTING FRAME
410104315	310113154	310113342

RECEIVER SPECIFICATIONS	
WEIGHT	2.20 lbs [1.09 Kg]
SIDE MATERIAL	ABS-Polycarbonate Blend
FRAME MATERIAL	ANODIZED ALUMINUM
SLIDE MATERIAL	NICKEL PLATED STEEL
LINKAGE, HANDLE, LATCH	STAINLESS STEEL
AVAILABLE MODULE SLOTS	10 POSITIONS
CYCLE LIFE	20,000
TEMPERATURE	-55°C TO 85°C
MAXIMUM WEIGHT SUPPORT	25 lbs. @ 6" [11 Kg @ 15.25 cm]

SOLIDWORKS DRAWING FILE	CUSTOMER DRAWING - CUSTOMER DRAWING - CUSTOMER DRAWING										A
	DIMENSIONS ARE SHOWN AS: (millimeters) INCHES		CONTRACT NO.			VIRGINIA PANEL CORPORATION WWW.VPC.COM					
			SIGNATURES		DATE						
			DR	B LINGER	5/1/07						
			CHK								
			ENG								
	REMOVE BURRS, BREAK SHARP EDGES.		PROD			RCV 2100 10 MOD KEYED					
	MATERIAL		ASSY								
FINISH		Q A			SIZE	FSCM NO.	DWG NO.	REV			
		APPD			D	18117	310104339	C			
					SCALE: 1:4		310104339	2/16/2017	SHEET 1 OF 2		



CUSTOMER DRAWING - CUSTOMER DRAWING - CUSTOMER DRAWING			
THE INFORMATION CONTAINED HEREIN IS THE EXCLUSIVE PROPERTY OF VIRGINIA PANEL CORPORATION AND IS SUBMITTED FOR USE BY THE CUSTOMER ONLY. THE DATA SHALL NOT BE DUPLICATED, USED, OR DISCLOSED IN WHOLE OR IN PART FOR ANY PURPOSE OTHER THAN TO MAINTAIN THE EQUIPMENT PROVIDED.	SIZE D	CAGE CODE 18117	DWG.NO. 310104317 REV C
SCALE: 1:1		310104339	SHEET 2 OF 2