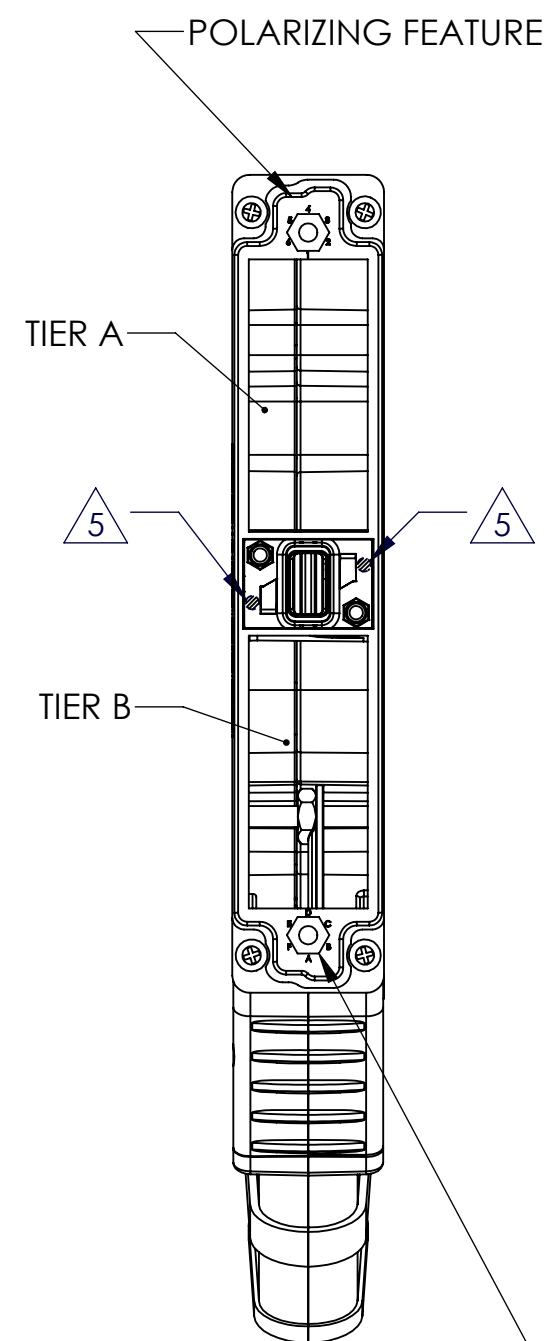
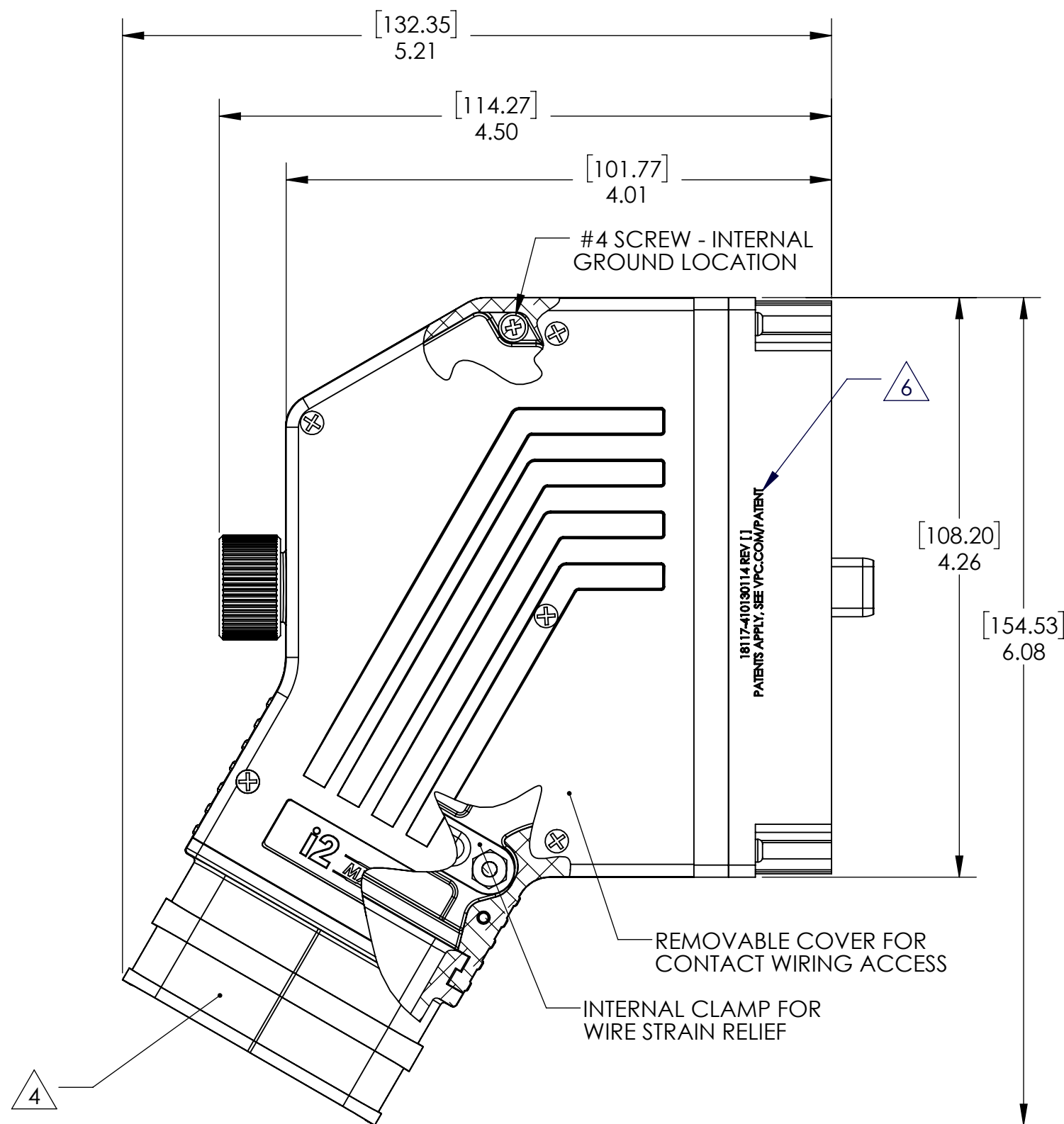
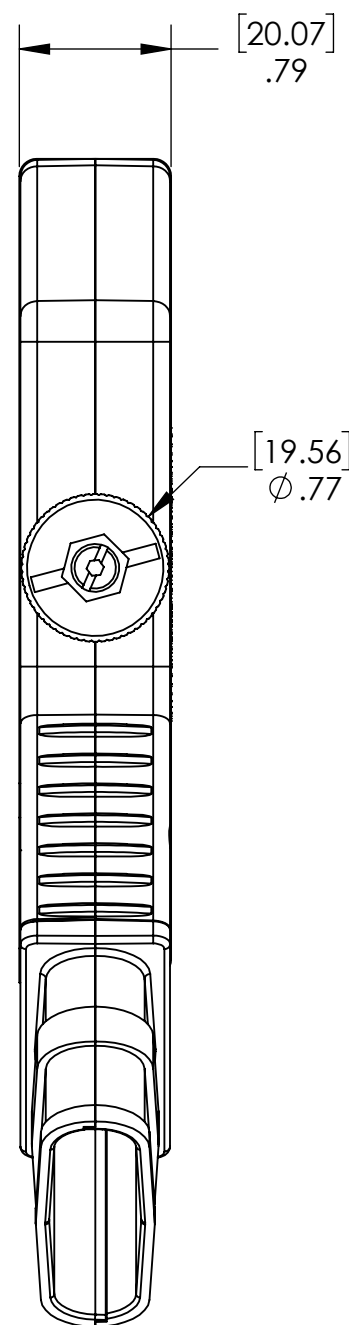


THE INFORMATION CONTAINED HEREIN IS THE EXCLUSIVE PROPERTY OF VIRGINIA PANEL CORPORATION AND IS SUBMITTED FOR USE BY THE CUSTOMER ONLY. THE DATA SHALL NOT BE DUPLICATED, USED, OR DISCLOSED IN WHOLE OR IN PART FOR ANY PURPOSE OTHER THAN TO MAINTAIN THE EQUIPMENT PROVIDED. CONSULT WITH VIRGINIA PANEL CORPORATION ENGINEERING IF MORE DETAIL IS REQUIRED.



ATTACHMENT POINT FOR PROTECTIVE COVER (NOT INCLUDED WITH ITA ASSEMBLY)

2. MATERIALS:
FRAME & DRIVE KNOB: Ni ZINC
BACK SHELL: Ni PLATED ALUMINUM
DRIVE SYSTEM: BeCu AND BRONZE, Ni PLATED
HARDWARE: STAINLESS STEEL

RELATIVE CONNECTOR POSITION:
AND WIRE ROUTING ARE GENERIC
AND MAY VARY WITH PINOUT

DIMENSIONS ARE SHOWN IN
[MILLIMETERS]
INCHES

4

3

2

T