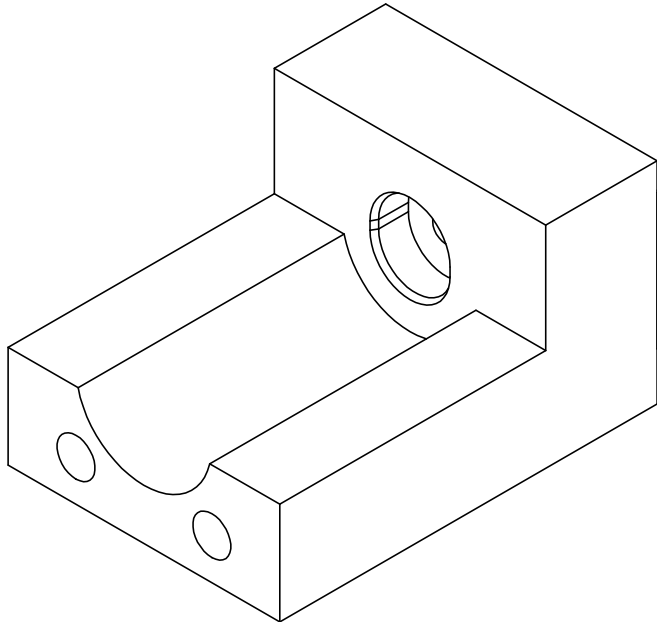


DO NOT SCALE DRAWING

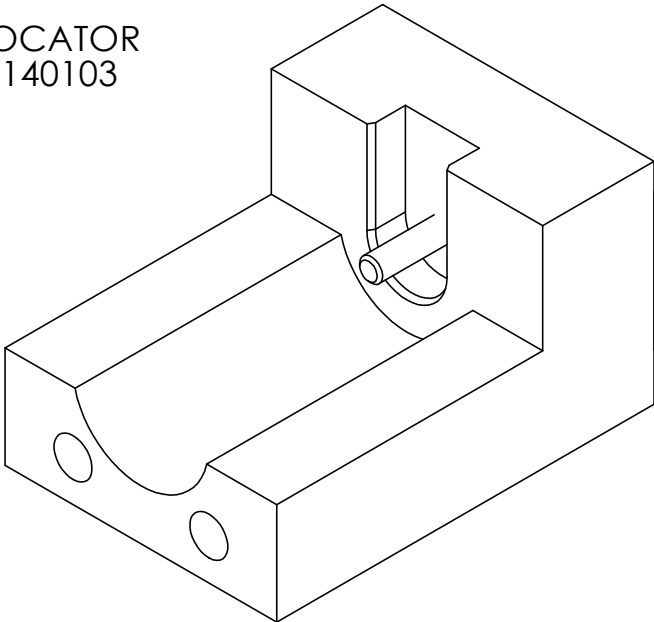
THE INFORMATION CONTAINED HEREIN IS THE EXCLUSIVE PROPERTY OF VIRGINIA PANEL CORPORATION AND IS SUBMITTED FOR USE BY THE CUSTOMER ONLY. THE DATA SHALL NOT BE DUPLICATED, USED, OR DISCLOSED IN WHOLE OR IN PART FOR ANY PURPOSE OTHER THAN TO MAINTAIN THE EQUIPMENT PROVIDED. CONSULT WITH VIRGINIA PANEL CORPORATION ENGINEERING IF MORE DETAIL IS REQUIRED.

REVISIONS

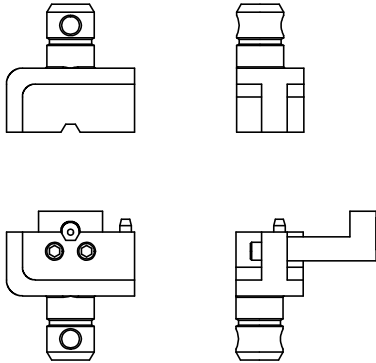
REV	DESCRIPTION	DATE	ENGR
G	ECN # 4229	8/24/12	S RIDDLE



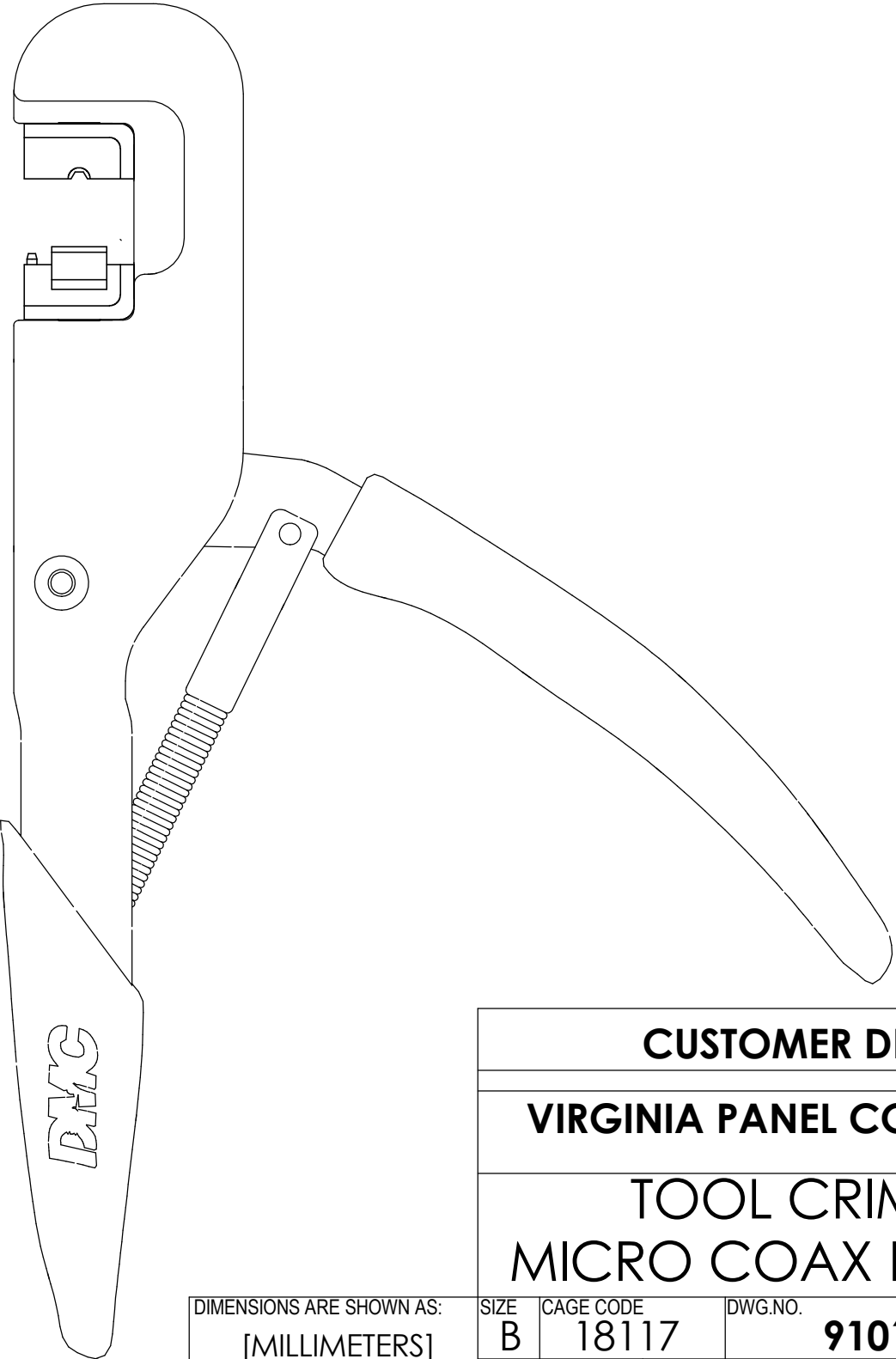
RECEIVER CONTACT LOCATOR  
FOR 610140101 & 610140103



ITA CONTACT LOCATOR  
FOR 610141101 & 610141103



TOOL HANDLE NOT  
SHOWN IN ALL VIEWS  
FOR CLARITY



- NOTES:
2. FOR USE WITH MICRO COAX CONTACTS  
610140101, 610140103, 610141101, & 610141103
  1. FOR APPLICATION USE AND CARE INFORMATION CONSULT  
VPC USERS GUIDE @ WWW.VPC.COM

CUSTOMER DRAWING

VIRGINIA PANEL CORPORATION

WWW.VPC.COM

TOOL CRIMP KIT  
MICRO COAX RG316/179

DIMENSIONS ARE SHOWN AS:	SIZE	CAGE CODE	DWG.NO.	REV
[MILLIMETERS] INCHES	B	18117	910101132	G
SCALE:NONE	910101132	8/28/08	SHEET	1 OF 1