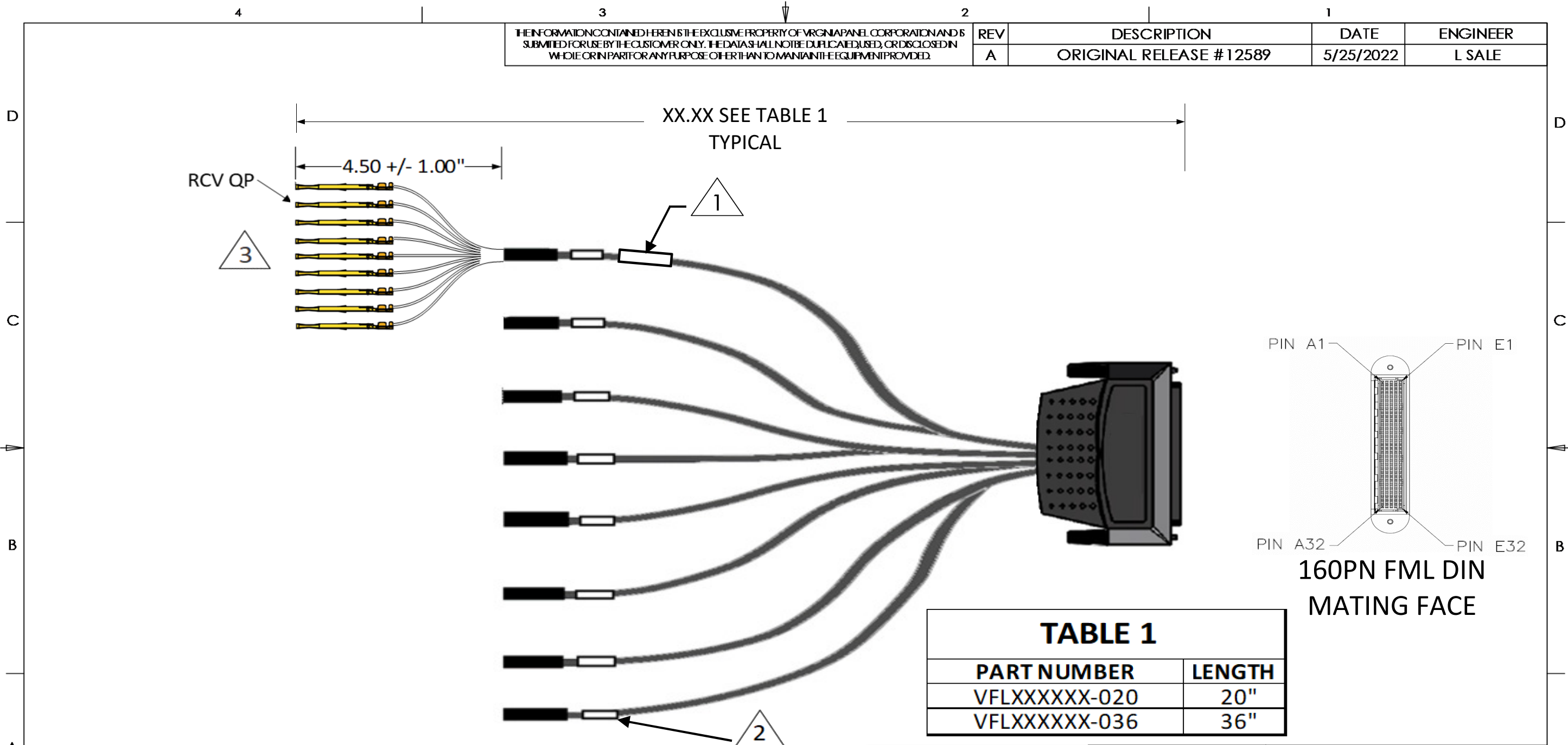
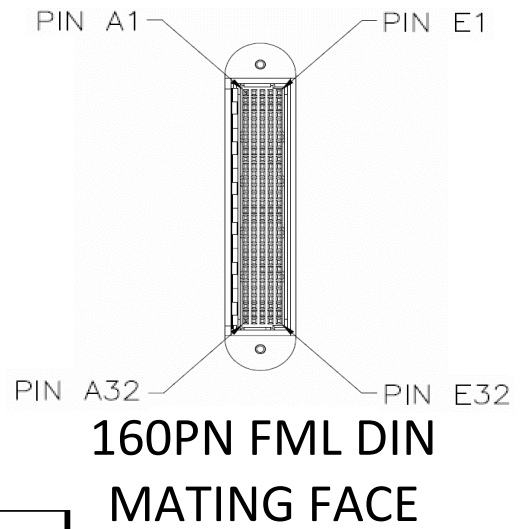


THE INFORMATION CONTAINED HEREIN IS THE EXCLUSIVE PROPERTY OF VIRGINIA PANEL CORPORATION AND IS SUBMITTED FOR USE BY THE CUSTOMER ONLY. THE DATA SHALL NOT BE DUPLICATED, USED, OR DISCLOSED IN WHOLE OR IN PART FOR ANY PURPOSE OTHER THAN TO MAINTAIN THE EQUIPMENT PROVIDED.

REV	DESCRIPTION	DATE	ENGINEER
A	ORIGINAL RELEASE # 12589	5/25/2022	L SALE



PART NUMBER	LENGTH
VFLXXXXXX-020	20"
VFLXXXXXX-036	36"



- 3 QUADRAPADDLE FLYING LEAD CONTACTS FOR EACH CABLE LEG. TYPICAL 8 PLACES.
- 2 MARK IN APPROXIMATE AREA AS SHOWN WITH CABLE LEG REFERENCE NUMBER. EX: "CABLE LEG 1". TYPICAL 8 PLACES
- 1 MARK IN APPROXIMATE AREA AS SHOWN "VFL141124-XXX REV []"
- NOTES:

DIMENSION DESIGNATOR LABELS PER ES6 UNLESS OTHERWISE SPECIFIED.		TORQUE ALL SCREWS PER ES2 UNLESS OTHERWISE SPECIFIED.	
VPC BREAKOUT TOLERANCES UNLESS SPECIFIED REFERENCE ENGINEERING SPECIFICATION 4		DIMENSIONS ARE IN INCHES UNLESS OTHERWISE SPECIFIED.	
IF	THEN	RELATIVE CONNECTOR POSITIONS AND WIRING ARE GENERIC AND MAY VARY WITH PINOUT	
BUNDLE SIZE IS SMALLER THAN THE CONNECTOR ENVELOPE & STRAIN RELIEF IS OFFSET	3.50 +/- 1.00	TOLERANCES UNLESS SPECIFIED	
BUNDLE SIZE IS SMALLER THAN THE CONNECTOR ENVELOPE & STRAIN RELIEF IS CENTERED	4.50 +/- 1.00	NOMINAL LENGTH	TOLERANCE
BUNDLE SIZE IS LARGER THAN THE CONNECTOR ENVELOPE	5.50 +/- 1.00	0 - 11.99"	+1.00/-0.00
		12.00 - 59.99"	+2.00/-1.00
		60.00 - 119.99"	+4.00/-1.00
		120.00 - 299.99"	+6.00/-1.00
		300.00" - UP	+5%/-1.00

VPC Virginia Panel Corporation

VFLSIG 160PN DIN ML TO QP

DWG. NO. **VFL141124** REV **A**

SIZE	SCALE	CAGE CODE	SHEET
B	NONE	18117	1 OF 1

Run #	From Location (Pin)	From Signal Desc	Wire AWG	Wire Color	Cable Leg Group	To Location (Conn-Pin)
1	A29	COM 1+	24	BLK	1	610138216
2	B29	CH 4-	24	BRN	1	610138216
3	C29	CH 5-	24	RED	1	610138216
4	D29	CH 6-	24	ORN	1	610138216
5	E29	CH 7-	24	YEL	1	610138216
6	A30	COM 1+	24	GRN	1	610138216
7	B30	CH 4+	24	BLU	1	610138216
8	C30	CH 5+	24	PUR	1	610138216
9	D30	CH 6+	24	GRY	1	610138216
10	E30	CH 7+	24	WHT	1	610138216
11	A31	COM 0-	24	PNK	1	610138216
12	B31	CH 0-	24	LIGHT GRN	1	610138216
13	C31	CH 1-	24	BLK/WHT	1	610138216
14	D31	CH 2-	24	BRN/WHT	1	610138216
15	E31	CH 3-	24	RED/WHT	1	610138216
16	A32	COM 0+	24	ORN/WHT	1	610138216
17	B32	CH 0+	24	GRN/WHT	1	610138216
18	C32	CH 1+	24	BLU/WHT	1	610138216
19	D32	CH 2+	24	PUR/WHT	1	610138216
20	E32	CH 3+	24	RED/BLK	1	610138216
21	A25	COM 3-	24	BLK	2	610138216
22	B25	CH 12-	24	BRN	2	610138216
23	C25	CH 13-	24	RED	2	610138216
24	D25	CH 14-	24	ORN	2	610138216
25	E25	CH 15-	24	YEL	2	610138216
26	A26	COM 3+	24	GRN	2	610138216
27	B26	CH 12+	24	BLU	2	610138216
28	C26	CH 13+	24	PUR	2	610138216
29	D26	CH 14+	24	GRY	2	610138216
30	E26	CH 15+	24	WHT	2	610138216
31	A27	COM 2-	24	PNK	2	610138216
32	B27	CH 8-	24	LIGHT GRN	2	610138216
33	C27	CH 9-	24	BLK/WHT	2	610138216
34	D27	CH 10-	24	BRN/WHT	2	610138216
35	E27	CH 11-	24	RED/WHT	2	610138216
36	A28	COM 2+	24	ORN/WHT	2	610138216
37	B28	CH 8+	24	GRN/WHT	2	610138216
38	C28	CH 9+	24	BLU/WHT	2	610138216
39	D28	CH 10+	24	PUR/WHT	2	610138216
40	E28	CH 11+	24	RED/BLK	2	610138216
41	A21	COM 5-	24	BLK	3	610138216
42	B21	CH 20-	24	BRN	3	610138216
43	C21	CH 21-	24	RED	3	610138216
44	D21	CH 22-	24	ORN	3	610138216
45	E21	CH 23-	24	YEL	3	610138216
46	A22	COM 5+	24	GRN	3	610138216
47	B22	CH 20+	24	BLU	3	610138216
48	C22	CH 21+	24	PUR	3	610138216
49	D22	CH 22+	24	GRY	3	610138216
50	E22	CH 23+	24	WHT	3	610138216

Run #	From Location (Pin)	From Signal Desc	Wire AWG	Wire Color	Cable Leg Group	To Location (Conn-Pin)
51	A23	COM 4-	24	PNK	3	610138216
52	B23	CH 16-	24	LIGHT GRN	3	610138216
53	C23	CH 17-	24	BLK/WHT	3	610138216
54	D23	CH 18-	24	BRN/WHT	3	610138216
55	E23	CH 19-	24	RED/WHT	3	610138216
56	A24	COM 4+	24	ORN/WHT	3	610138216
57	B24	CH 16+	24	GRN/WHT	3	610138216
58	C24	CH 17+	24	BLU/WHT	3	610138216
59	D24	CH 18+	24	PUR/WHT	3	610138216
60	E24	CH 19+	24	RED/BLK	3	610138216
61	A17	COM 7-	24	BLK	4	610138216
62	B17	CH 28-	24	BRN	4	610138216
63	C17	CH 29-	24	RED	4	610138216
64	D17	CH 30-	24	ORN	4	610138216
65	E17	CH 31-	24	YEL	4	610138216
66	A18	COM 7+	24	GRN	4	610138216
67	B18	CH 28+	24	BLU	4	610138216
68	C18	CH 29+	24	PUR	4	610138216
69	D18	CH 30+	24	GRY	4	610138216
70	E18	CH 31+	24	WHT	4	610138216
71	A19	COM 6-	24	PNK	4	610138216
72	B19	CH 24-	24	LIGHT GRN	4	610138216
73	C19	CH 25-	24	BLK/WHT	4	610138216
74	D19	CH 26-	24	BRN/WHT	4	610138216
75	E19	CH 27-	24	RED/WHT	4	610138216
76	A20	COM 6+	24	ORN/WHT	4	610138216
77	B20	CH 24+	24	GRN/WHT	4	610138216
78	C20	CH 25+	24	BLU/WHT	4	610138216
79	D20	CH 26+	24	PUR/WHT	4	610138216
80	E20	CH 27+	24	RED/BLK	4	610138216
81	A13	COM 9-	24	BLK	5	610138216
82	B13	CH 36-	24	BRN	5	610138216
83	C13	CH 37-	24	RED	5	610138216
84	D13	CH 38-	24	ORN	5	610138216
85	E13	CH 39-	24	YEL	5	610138216
86	A14	COM 9+	24	GRN	5	610138216
87	B14	CH 36+	24	BLU	5	610138216
88	C14	CH 37+	24	PUR	5	610138216
89	D14	CH 38+	24	GRY	5	610138216
90	E14	CH 39+	24	WHT	5	610138216
91	A15	COM 8-	24	PNK	5	610138216
92	B15	CH 32-	24	LIGHT GRN	5	610138216
93	C15	CH 33-	24	BLK/WHT	5	610138216
94	D15	CH 34-	24	BRN/WHT	5	610138216
95	E15	CH 35-	24	RED/WHT	5	610138216
96	A16	COM 8+	24	ORN/WHT	5	610138216
97	B16	CH 32+	24	GRN/WHT	5	610138216
98	C16	CH 33+	24	BLU/WHT	5	610138216
99	D16	CH 34+	24	PUR/WHT	5	610138216
100	E16	CH 35+	24	RED/BLK	5	610138216

Run #	From Location (Pin)	From Signal Desc	Wire AWG	Wire Color	Cable Leg Group	To Location (Conn-Pin)
101	A9	COM 11-	24	BLK	6	610138216
102	B9	CH 44-	24	BRN	6	610138216
103	C9	CH 45-	24	RED	6	610138216
104	D9	CH 46-	24	ORN	6	610138216
105	E9	CH 47-	24	YEL	6	610138216
106	A10	COM 11+	24	GRN	6	610138216
107	B10	CH 44+	24	BLU	6	610138216
108	C10	CH 45+	24	PUR	6	610138216
109	D10	CH 46+	24	GRY	6	610138216
110	E10	CH 47+	24	WHT	6	610138216
111	A11	COM 10-	24	PNK	6	610138216
112	B11	CH 40-	24	LIGHT GRN	6	610138216
113	C11	CH 41-	24	BLK/WHT	6	610138216
114	D11	CH 42-	24	BRN/WHT	6	610138216
115	E11	CH 43-	24	RED/WHT	6	610138216
116	A12	COM 10+	24	ORN/WHT	6	610138216
117	B12	CH 40+	24	GRN/WHT	6	610138216
118	C12	CH 41+	24	BLU/WHT	6	610138216
119	D12	CH 42+	24	PUR/WHT	6	610138216
120	E12	CH 43+	24	RED/BLK	6	610138216
121	A5	COM 13-	24	BLK	7	610138216
122	B5	CH 52-	24	BRN	7	610138216
123	C5	CH 53-	24	RED	7	610138216
124	D5	CH 54-	24	ORN	7	610138216
125	E5	CH 55-	24	YEL	7	610138216
126	A6	COM 13+	24	GRN	7	610138216
127	B6	CH 52+	24	BLU	7	610138216
128	C6	CH 53+	24	PUR	7	610138216
129	D6	CH 54+	24	GRY	7	610138216
130	E6	CH 55+	24	WHT	7	610138216
131	A7	COM 12-	24	PNK	7	610138216
132	B7	CH 48-	24	LIGHT GRN	7	610138216
133	C7	CH 49-	24	BLK/WHT	7	610138216
134	D7	CH 50-	24	BRN/WHT	7	610138216
135	E7	CH 51-	24	RED/WHT	7	610138216
136	A8	COM 12+	24	ORN/WHT	7	610138216
137	B8	CH 48+	24	GRN/WHT	7	610138216
138	C8	CH 49+	24	BLU/WHT	7	610138216
139	D8	CH 50+	24	PUR/WHT	7	610138216
140	E8	CH 51+	24	RED/BLK	7	610138216
141	A1	COM 15-	24	BLK	8	610138216
142	B1	CH 60-	24	BRN	8	610138216
143	C1	CH 61-	24	RED	8	610138216
144	D1	CH 62-	24	ORN	8	610138216
145	E1	CH 63-	24	YEL	8	610138216
146	A2	COM 15+	24	GRN	8	610138216
147	B2	CH 60+	24	BLU	8	610138216
148	C2	CH 61+	24	PUR	8	610138216
149	D2	CH 62+	24	GRY	8	610138216
150	E2	CH 63+	24	WHT	8	610138216

Run #	From Location (Pin)	From Signal Desc	Wire AWG	Wire Color	Cable Leg Group	To Location (Conn-Pin)
151	A3	COM 14-	24	PNK	8	610138216
152	B3	CH 56-	24	LIGHT GRN	8	610138216
153	C3	CH 57-	24	BLK/WHT	8	610138216
154	D3	CH 58-	24	BRN/WHT	8	610138216
155	E3	CH 59-	24	RED/WHT	8	610138216
156	A4	COM 14+	24	ORN/WHT	8	610138216
157	B4	CH 56+	24	GRN/WHT	8	610138216
158	C4	CH 57+	24	BLU/WHT	8	610138216
159	D4	CH 58+	24	PUR/WHT	8	610138216
160	E4	CH 59+	24	RED/BLK	8	610138216
*	**	AVAILABLE IN 20" AND 36" ONLY			**	*