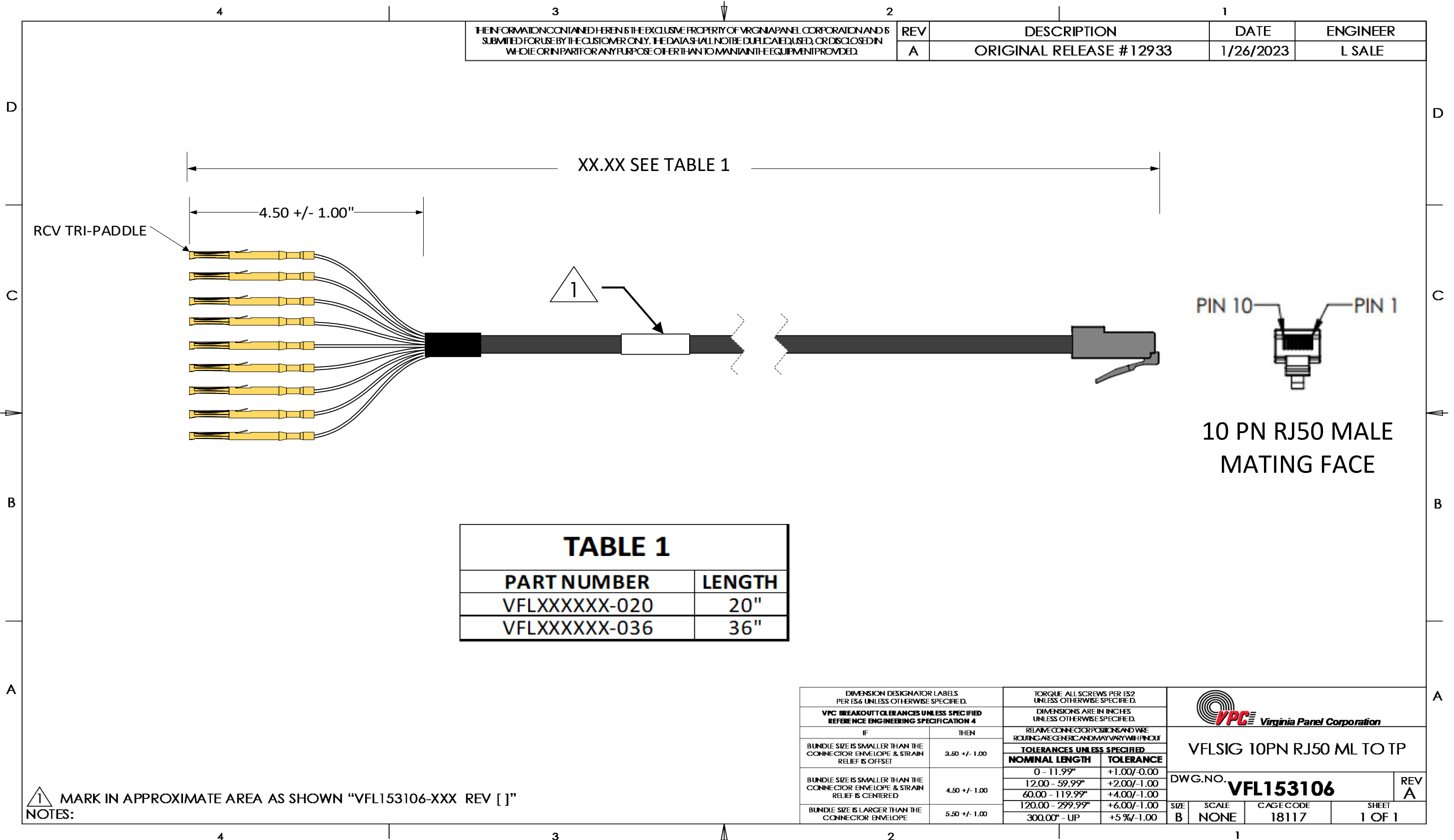


THE INFORMATION CONTAINED HEREIN IS THE EXCLUSIVE PROPERTY OF VIRGINIA PANEL CORPORATION AND IS SUBMITTED FOR USE BY THE CUSTOMER ONLY. THE DATA SHALL NOT BE DUPLICATED, USED, OR DISCLOSED IN WHOLE OR IN PART FOR ANY PURPOSE OTHER THAN TO MAINTAIN THE EQUIPMENT PROVIDED.

REV	DESCRIPTION	DATE	ENGINEER
A	ORIGINAL RELEASE # 12933	1/26/2023	L SALE



PART NUMBER	LENGTH
VFLXXXXXX-020	20"
VFLXXXXXX-036	36"

NOTES: MARK IN APPROXIMATE AREA AS SHOWN "VFL153106-XXX REV []"

DIMENSION DESIGNATOR LABELS PER ES6 UNLESS OTHERWISE SPECIFIED. VPC BREAKOUT TOLERANCES UNLESS SPECIFIED REFERENCE ENGINEERING SPECIFICATION 4		TORQUE ALL SCREWS PER ES2 UNLESS OTHERWISE SPECIFIED. DIMENSIONS ARE IN INCHES UNLESS OTHERWISE SPECIFIED.			
IF	THEN	RELATIVE CONNECTOR POSITIONS AND WIRE ROUTING ARE GENERIC AND MAY VARY WITH PINOUT TOLERANCES UNLESS SPECIFIED			
BUNDLE SIZE IS SMALLER THAN THE CONNECTOR ENVELOPE & STRAIN RELIEF IS OFFSET	3.50 +/- 1.00	NOMINAL LENGTH	TOLERANCE	VFLSIG 10PN RJ50 ML TO TP DWG. NO. VFL153106 REV A	
BUNDLE SIZE IS SMALLER THAN THE CONNECTOR ENVELOPE & STRAIN RELIEF IS CENTERED	4.50 +/- 1.00	0 - 11.99"	+1.00/-0.00		
BUNDLE SIZE IS LARGER THAN THE CONNECTOR ENVELOPE	5.50 +/- 1.00	12.00 - 59.99"	+2.00/-1.00		
		60.00 - 119.99"	+4.00/-1.00		
		120.00 - 299.99"	+6.00/-1.00	SIZE B	SCALE NONE
		300.00" - UP	+5 %/-1.00	CAGE CODE 18117	SHEET 1 OF 1

Run #	From Location (Pin)	From Signal Desc RS232	From Signal Desc (RS422 / RS485)	Wire AWG	Wire Color	Wire Group (PAIR)	To Location (Conn-Pin)
1	1	NC	NC	28	N/C	-	610110167
2	2	R1*	TXD-	28	GRY	-	610110167
3	3	CTS	TXD+	28	PUR	-	610110167
4	4	RTS	RTS-(HSO-)	28	BLU	-	610110167
5	5	DSR*	CTS-(HSI-)	28	GRN	-	610110167
6	6	GND	RXD-	28	YEL	-	610110167
7	7	DTR*	RXD+	28	ORG	-	610110167
8	8	TXD	RTS+(HSO+)	28	RED	-	610110167
9	9	RXD	CTS+(HSI+)	28	BRN	-	610110167
10	10	DCD*	GND	28	BLK	-	610110167
11	SHIELD	SHLD	SHLD	26	SHLD	-	610110167
*		These signals are "No Connect" on the PCI-2321 and PXI-8422 ports					*
*	**	AVAILABLE IN 20" AND 36" ONLY			**	*	*