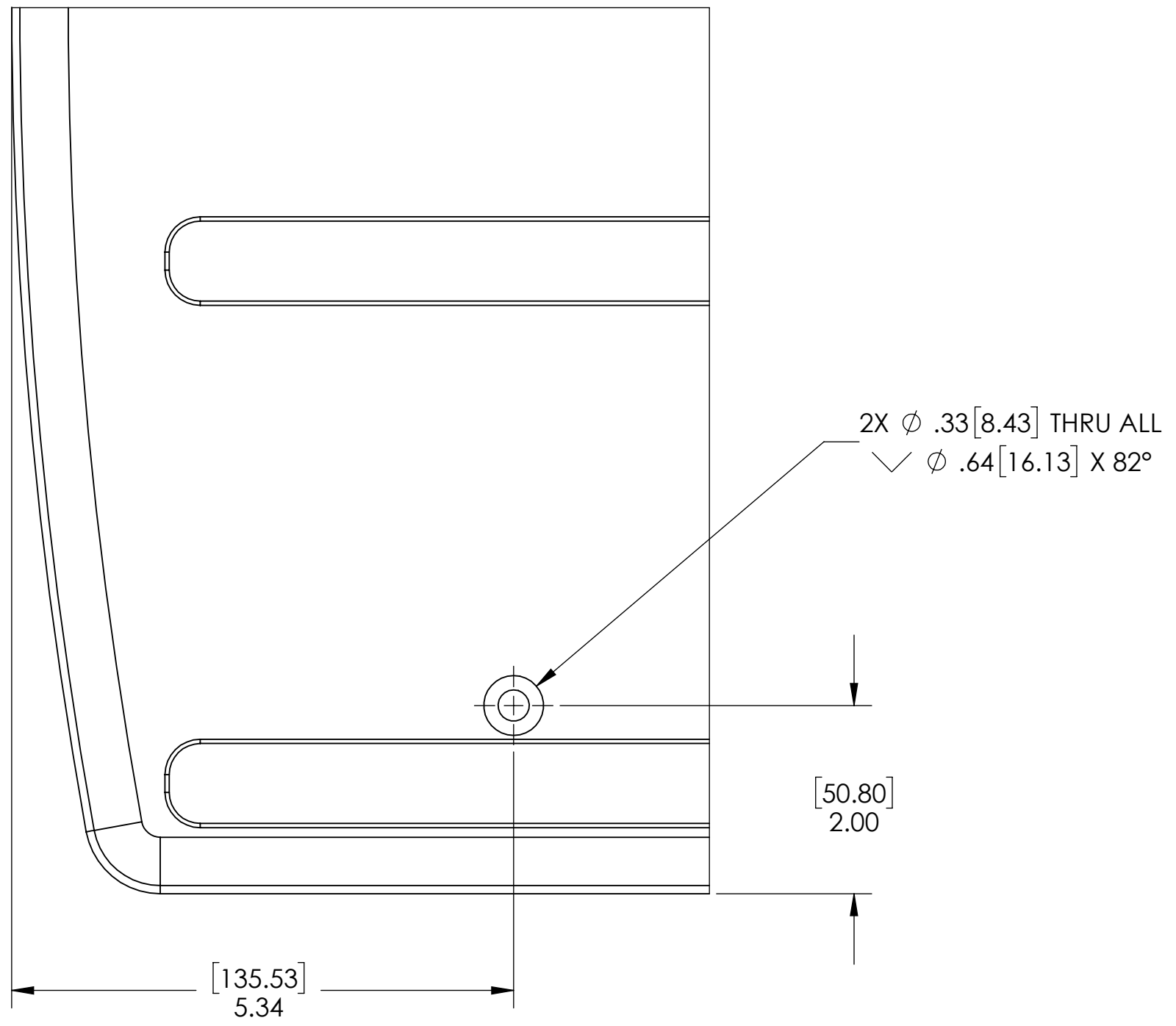


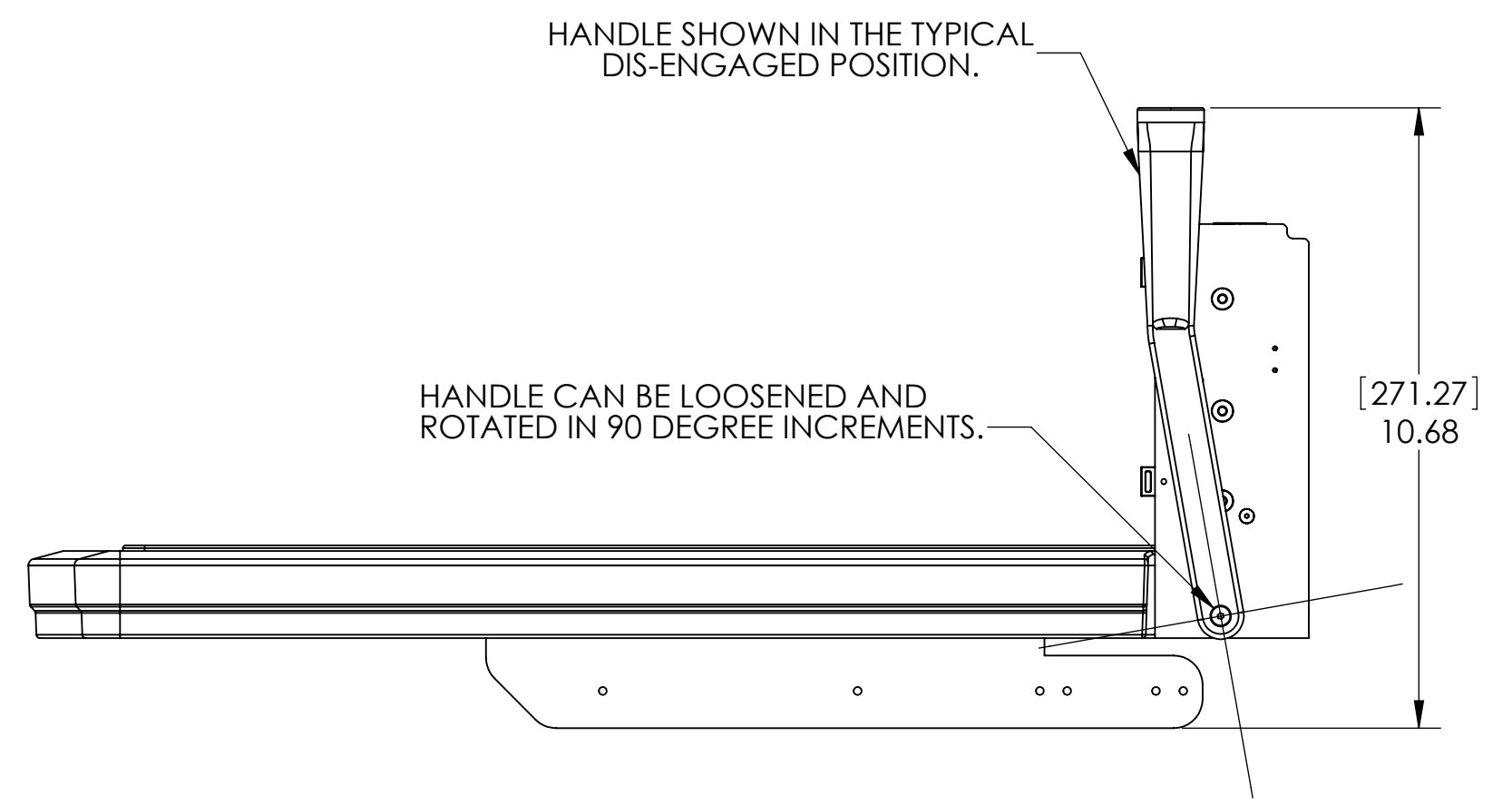
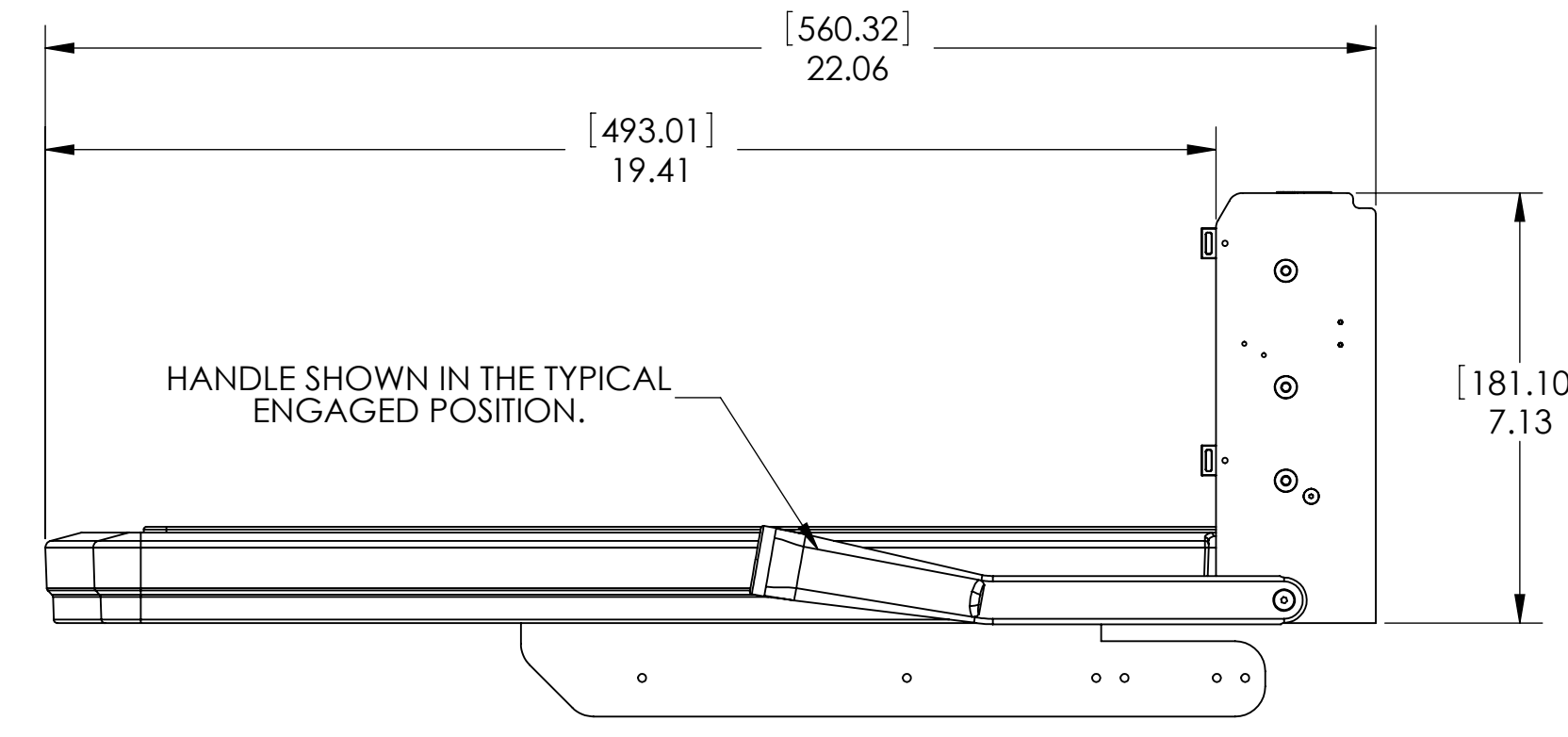
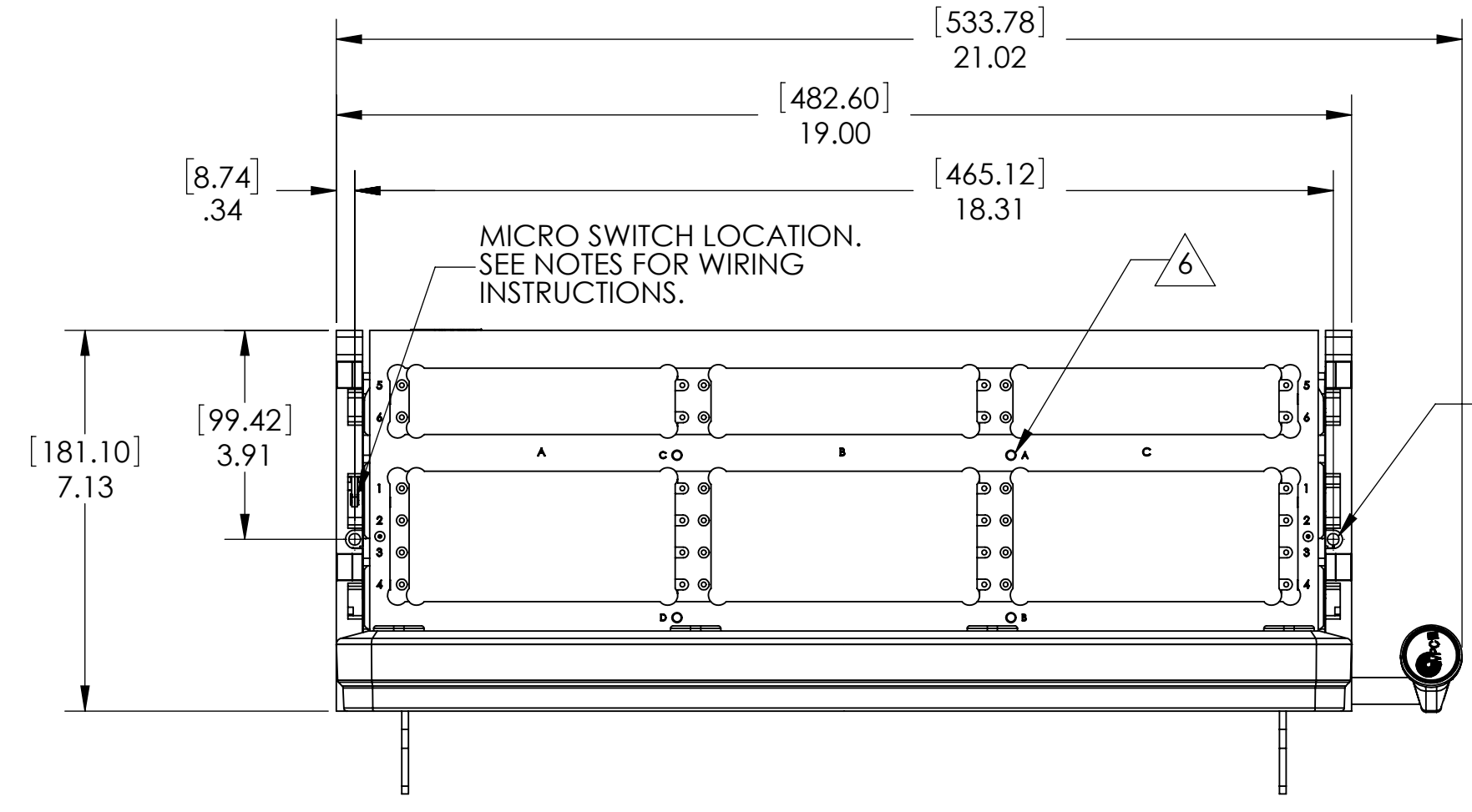
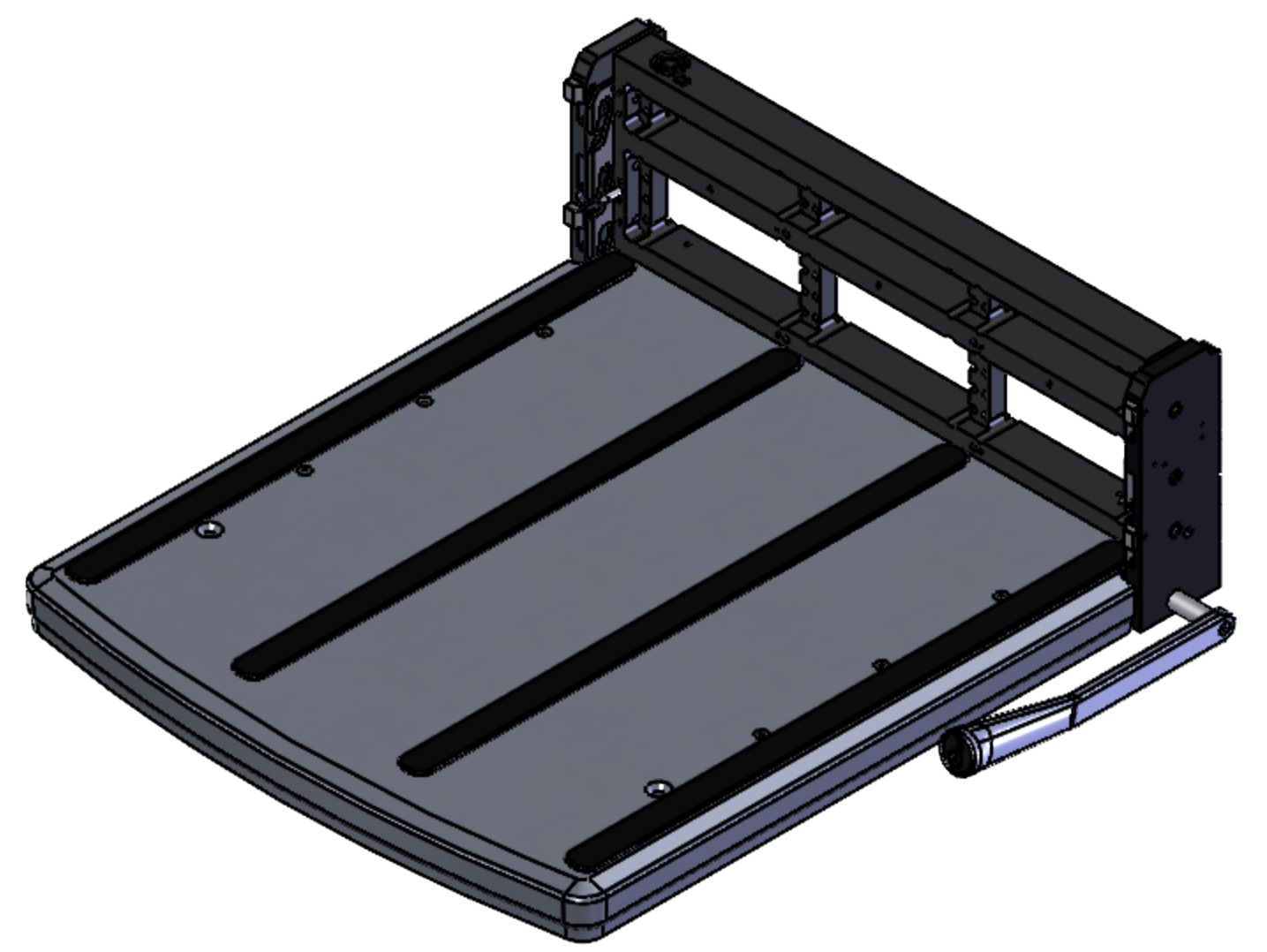
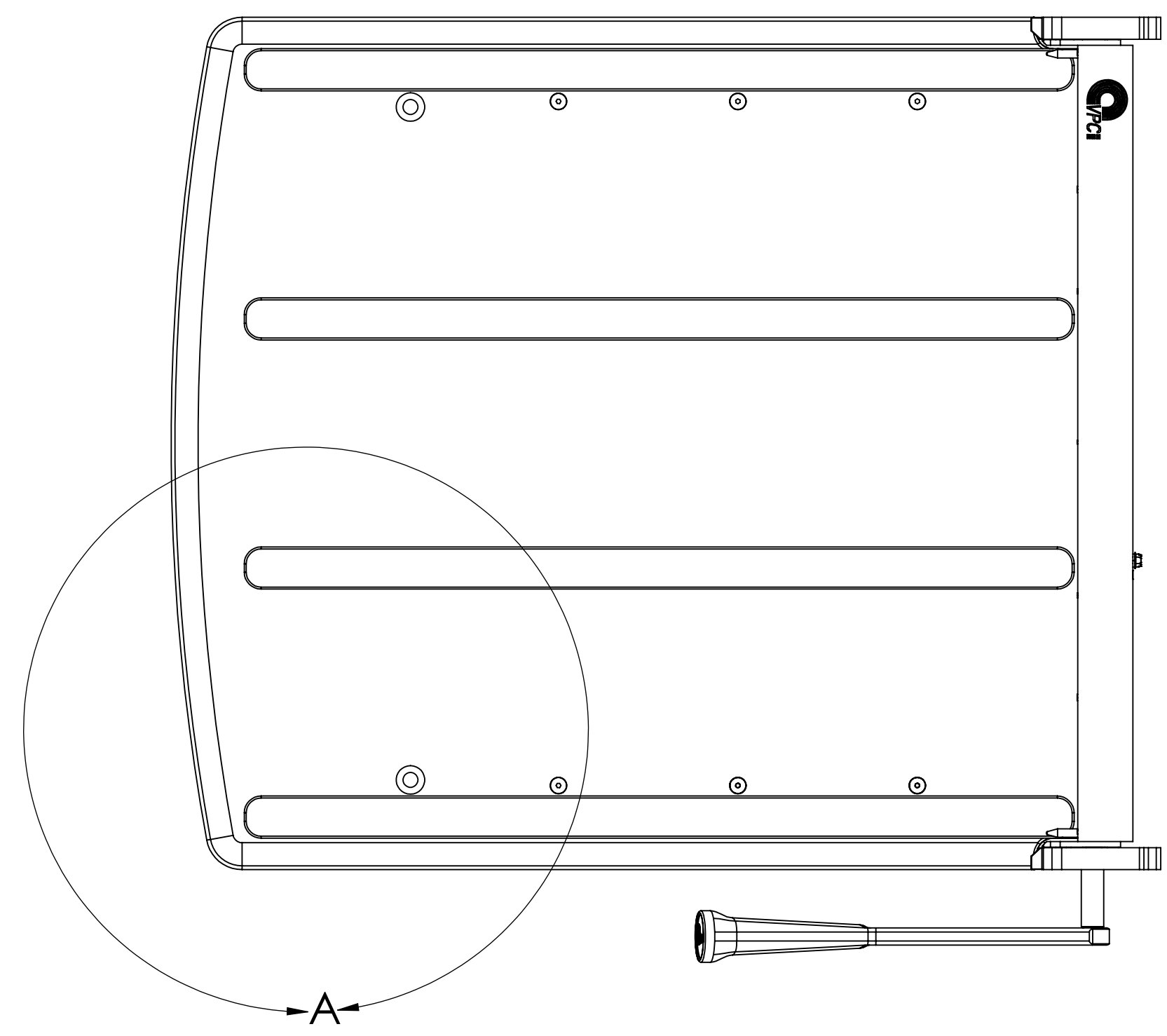
DO NOT SCALE DRAWING

THE INFORMATION CONTAINED HEREIN IS THE EXCLUSIVE PROPERTY OF VIRGINIA PANEL CORPORATION AND IS SUBMITTED FOR USE BY THE CUSTOMER ONLY. THE DATA SHALL NOT BE DUPLICATED, USED OR DISCLOSED IN WHOLE OR IN PART FOR ANY PURPOSE OTHER THAN TO MAINTAIN THE EQUIPMENT PROVIDED. CONSULT WITH VIRGINIA PANEL CORPORATION ENGINEERING IF MORE DETAIL IS REQUIRED.

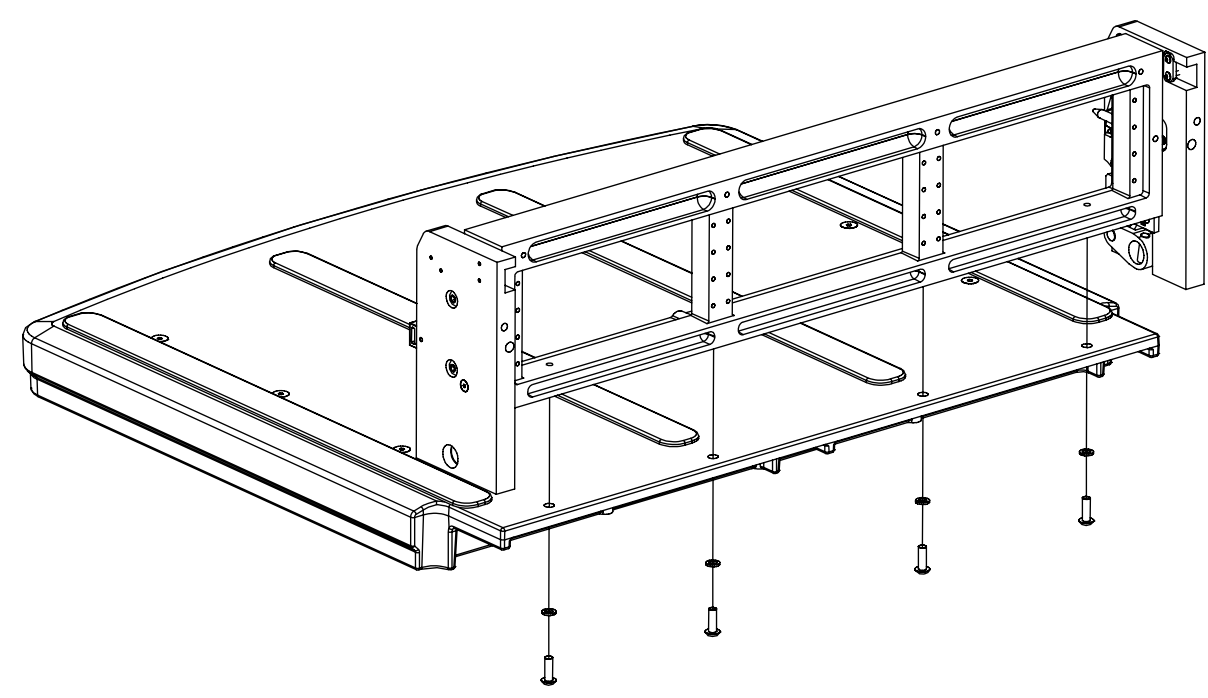
REVISIONS			
REV	DESCRIPTION	DATE	ENGR
N	ECN #15217	8/19/25	M ECKERT



DETAIL A
SCALE 2 : 3



PLATFORM SHIPPED ACCORDING TO P/N VARIANT	
310104385	PLATFORM SHIPPED ASSEMBLED TO RCVR
310104385-1	PLATFORM SHIPPED LOOSE. SEE ASSEMBLY BELOW



310104385-1 PLATFORM ASSEMBLY. HANDLE AND TORSION SHAFT NOT SHOWN FOR CLARITY.

KEYING PLUG LOCATIONS							
PATTERN 1				PATTERN 4			
RECEIVER		ITA		RECEIVER		ITA	
PIN A INSTALLED	PIN C INSTALLED	SCREW A OPEN	SCREW C OPEN	PIN A OPEN	PIN C OPEN	SCREW A INSTALLED	SCREW C INSTALLED
PIN B OPEN	PIN D OPEN	SCREW B INSTALLED	SCREW D INSTALLED	PIN B INSTALLED	PIN D INSTALLED	SCREW B OPEN	SCREW D OPEN
PATTERN 2				PATTERN 5			
RECEIVER		ITA		RECEIVER		ITA	
PIN A INSTALLED	PIN C OPEN	SCREW A OPEN	SCREW C INSTALLED	PIN A OPEN	PIN C INSTALLED	SCREW A INSTALLED	SCREW C OPEN
PIN B INSTALLED	PIN D OPEN	SCREW B OPEN	SCREW D INSTALLED	PIN B INSTALLED	PIN D OPEN	SCREW B OPEN	SCREW D INSTALLED
PATTERN 3				PATTERN 6			
RECEIVER		ITA		RECEIVER		ITA	
PIN A OPEN	PIN C INSTALLED	SCREW A INSTALLED	SCREW C OPEN	PIN A INSTALLED	PIN C OPEN	SCREW A OPEN	SCREW C INSTALLED
PIN B OPEN	PIN D INSTALLED	SCREW B INSTALLED	SCREW D OPEN	PIN B OPEN	PIN D INSTALLED	SCREW B INSTALLED	SCREW D OPEN

MATING ITA	PROTECTIVE COVER	RACK EXTENDER FOR EURO RACKS
410104322 (12 MODULE) 410104474 (18 MODULE)	310113518	310113519

7. GREEN 8-32 HEX HEAD SCREW & LOCK WASHER INCLUDED FOR OPTIONAL GROUND LOCATION TERMINATION.
6. IF KEYING IS REQUIRED USE VPC KEYING KIT PART NUMBER 310118112. SEE TABLE FOR KEYING OPTIONS.
5. PLATFORM MAY BE SECURED TO A TABLE WITH 1/4-20 SCREWS.
4. WEIGHT: APPROXIMATELY 28 POUNDS, ALUMINUM AND STEEL.
3. FOR RACK MOUNT APPLICATIONS, A SLIDE KIT IS REQUIRED:
 (2) 10-32 CAP SCREWS ARE INCLUDED TO SECURE RECEIVER TO RACK WHEN NOT IN USE.
2. MICROSCHWITZ WIRES NOT SHOWN. COLOR CODE AS FOLLOWS:
 RED - NORMALLY CLOSED
 WHITE - NORMALLY OPEN
 BLACK - COMMON
1. FOR APPLICATION USE AND CARE INFORMATION CONSULT VPC USERS GUIDE @ WWW.VPC.COM
- NOTES:

CUSTOMER DRAWING			
VIRGINIA PANEL CORPORATION WWW.VPC.COM			
RECEIVER, G12X, SLIDE MOUNT WITH 20" PLATFORM			
DIMENSIONS ARE SHOWN AS: [MILLIMETERS] INCHES	SIZE [CAGE CODE] D 18117	DWG NO. 310104385	REV N
SCALE: 1:3	SHEET 1 OF 1		