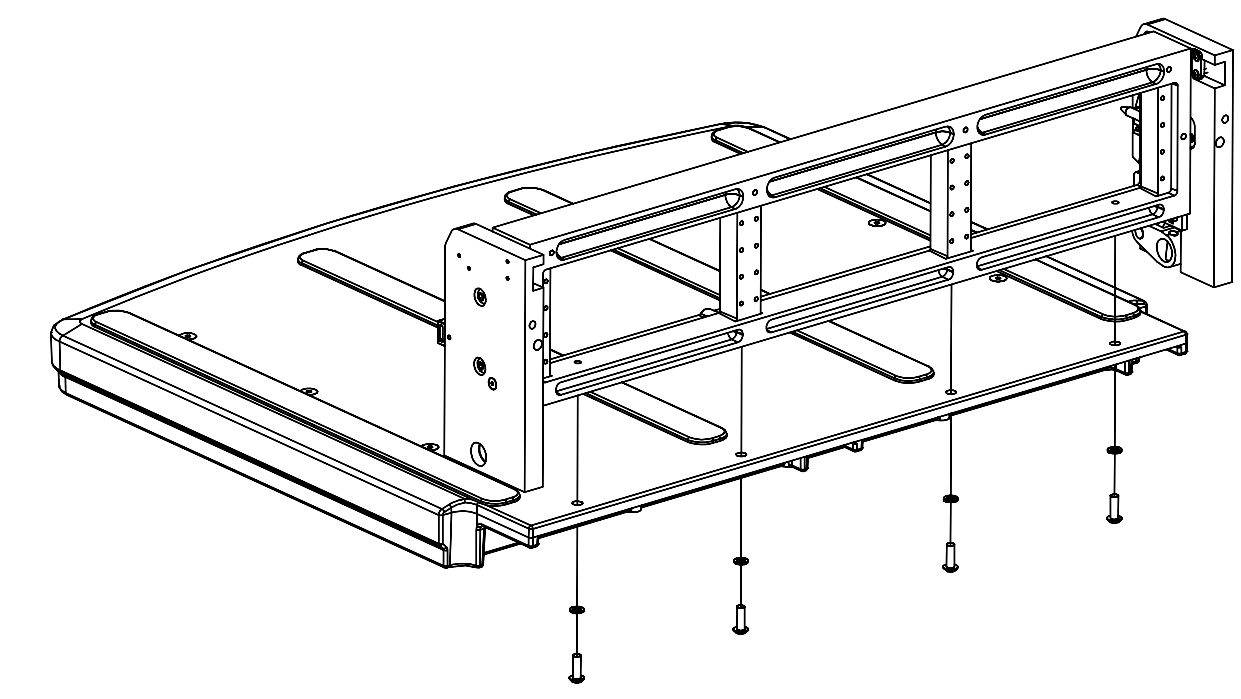


DO NOT SCALE DRAWING

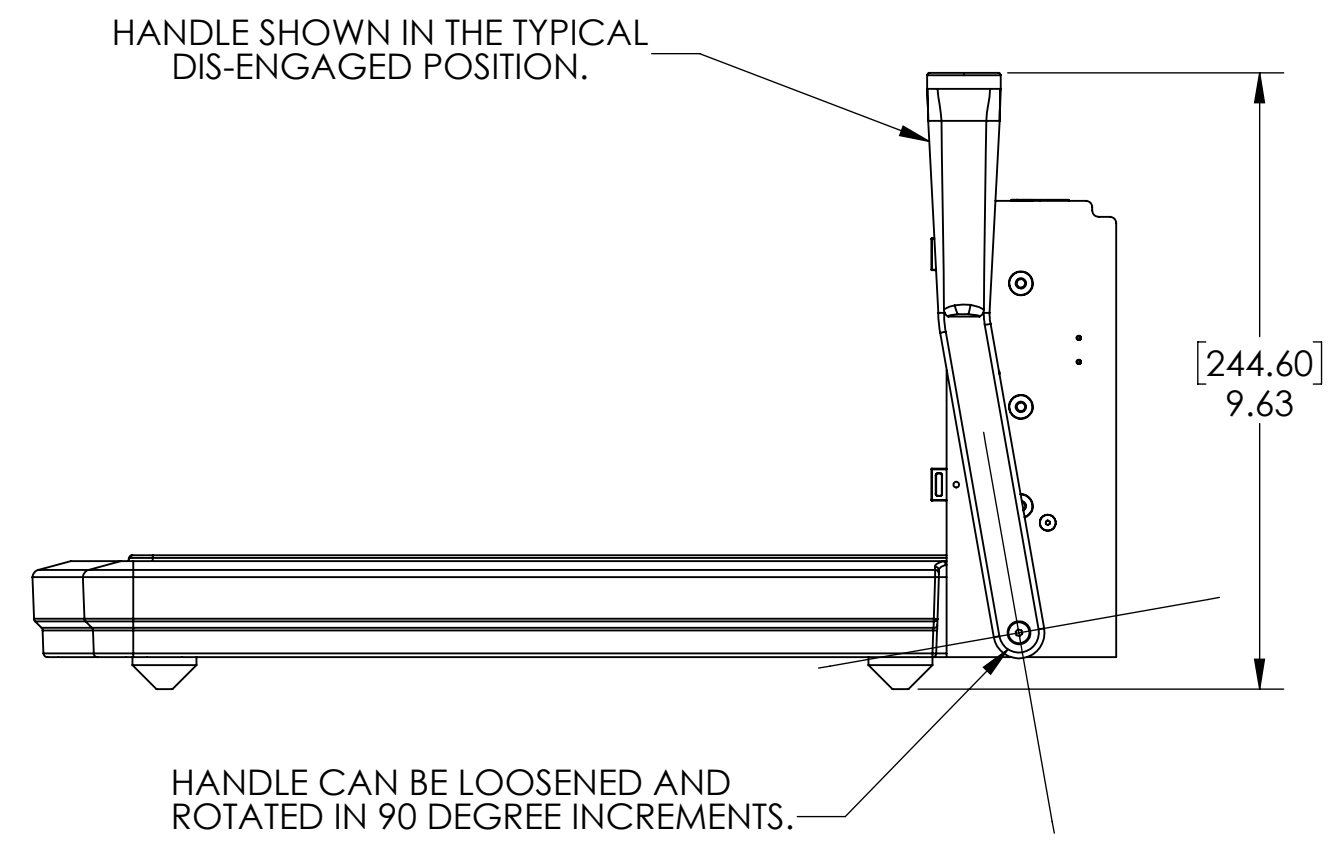
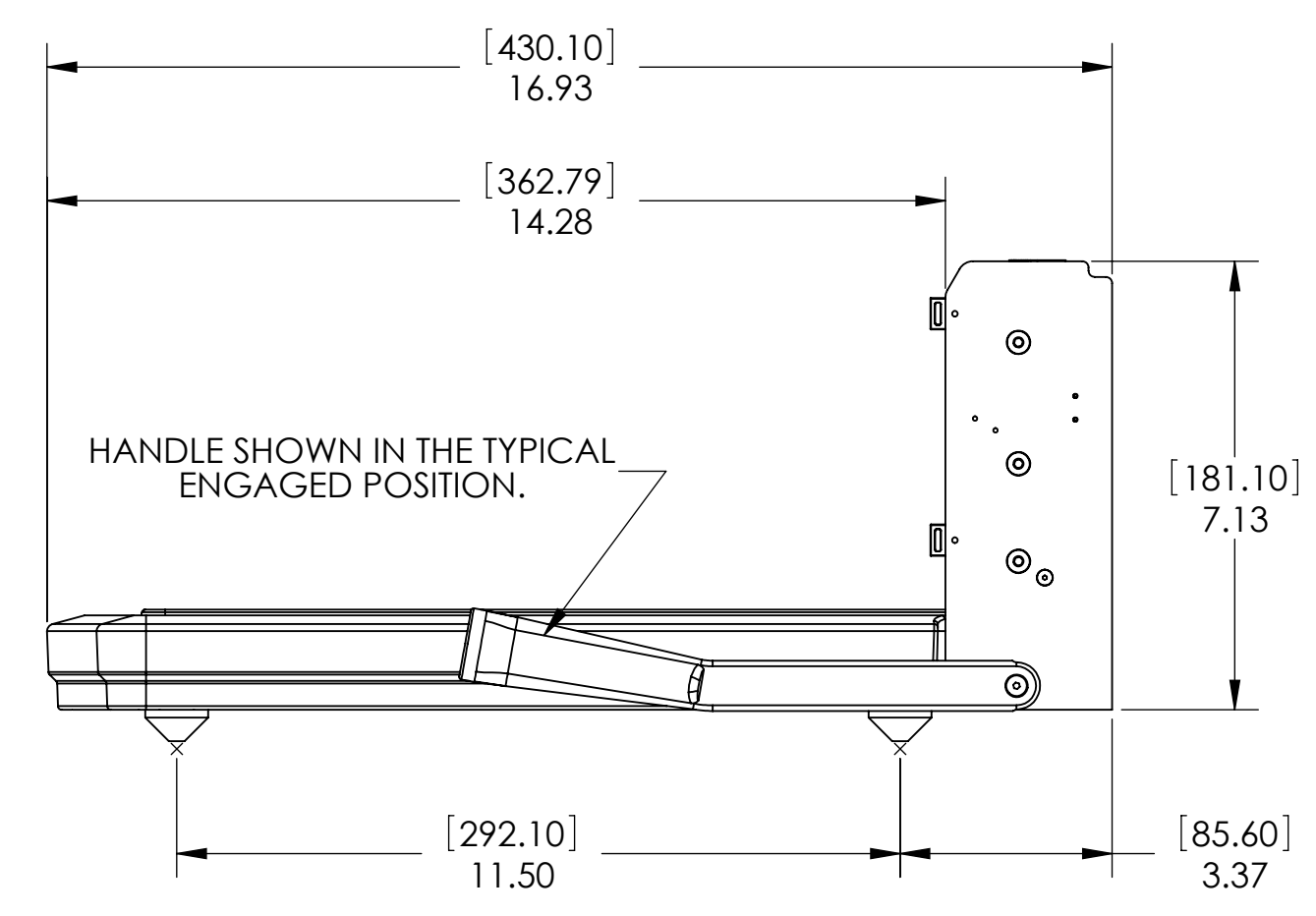
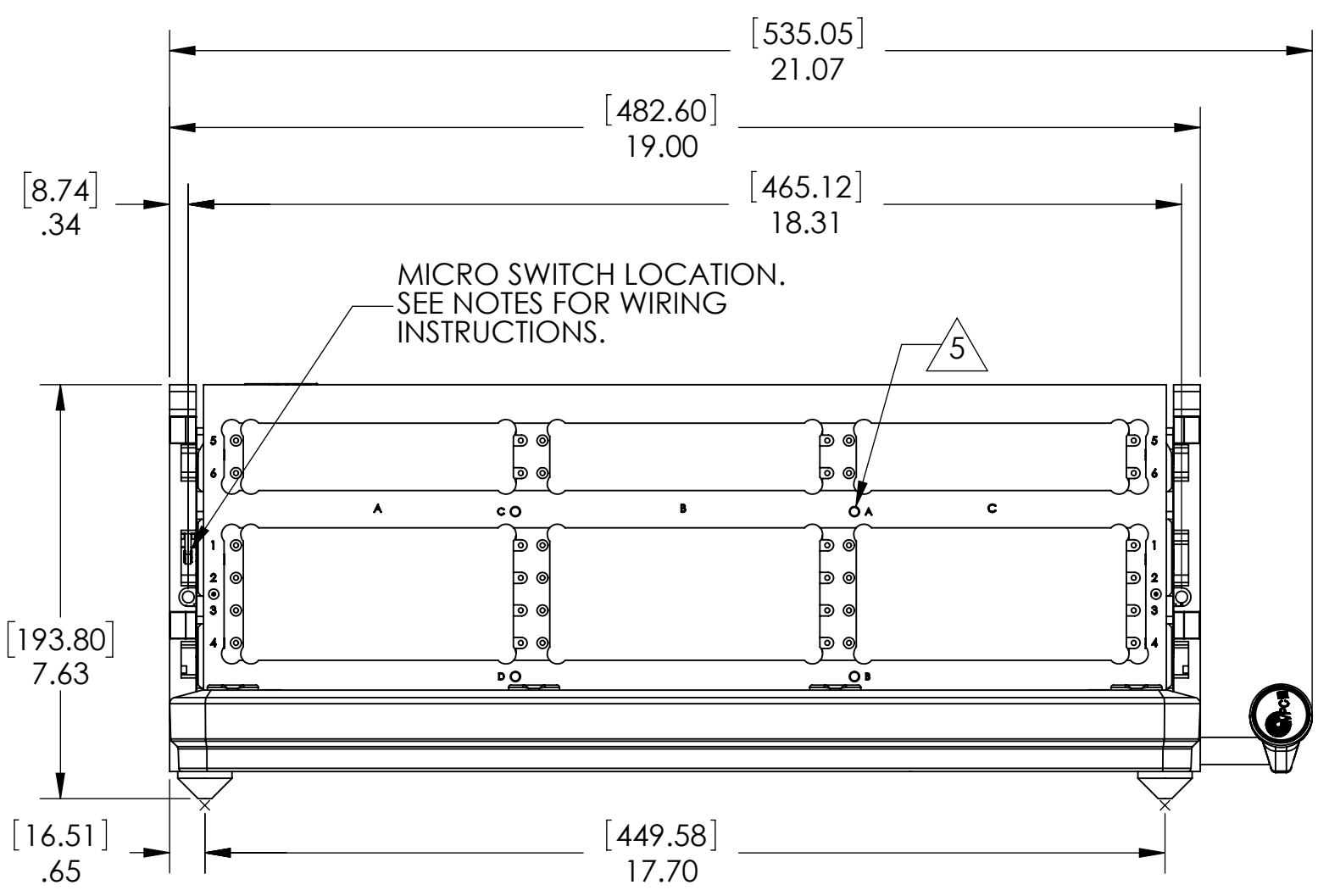
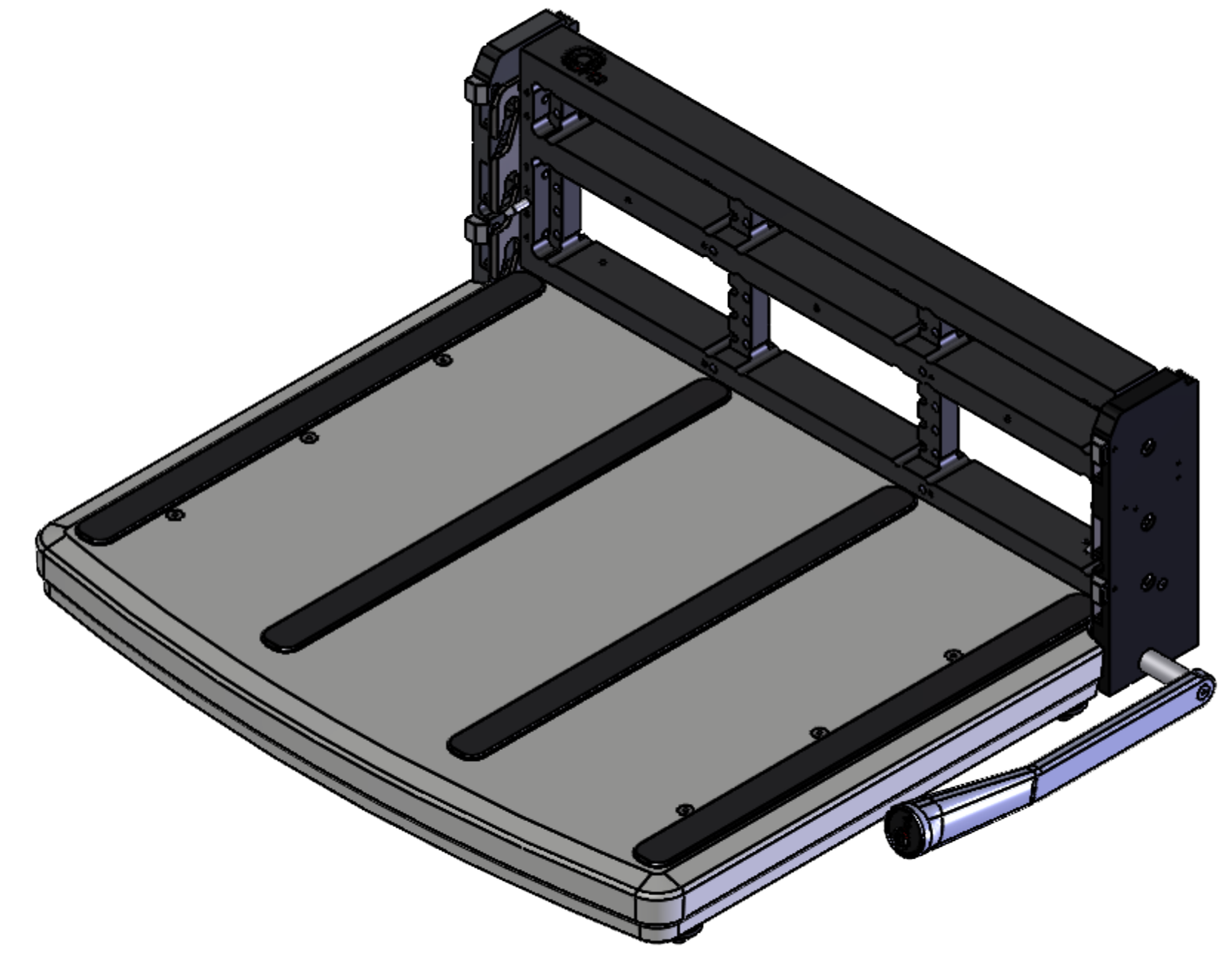
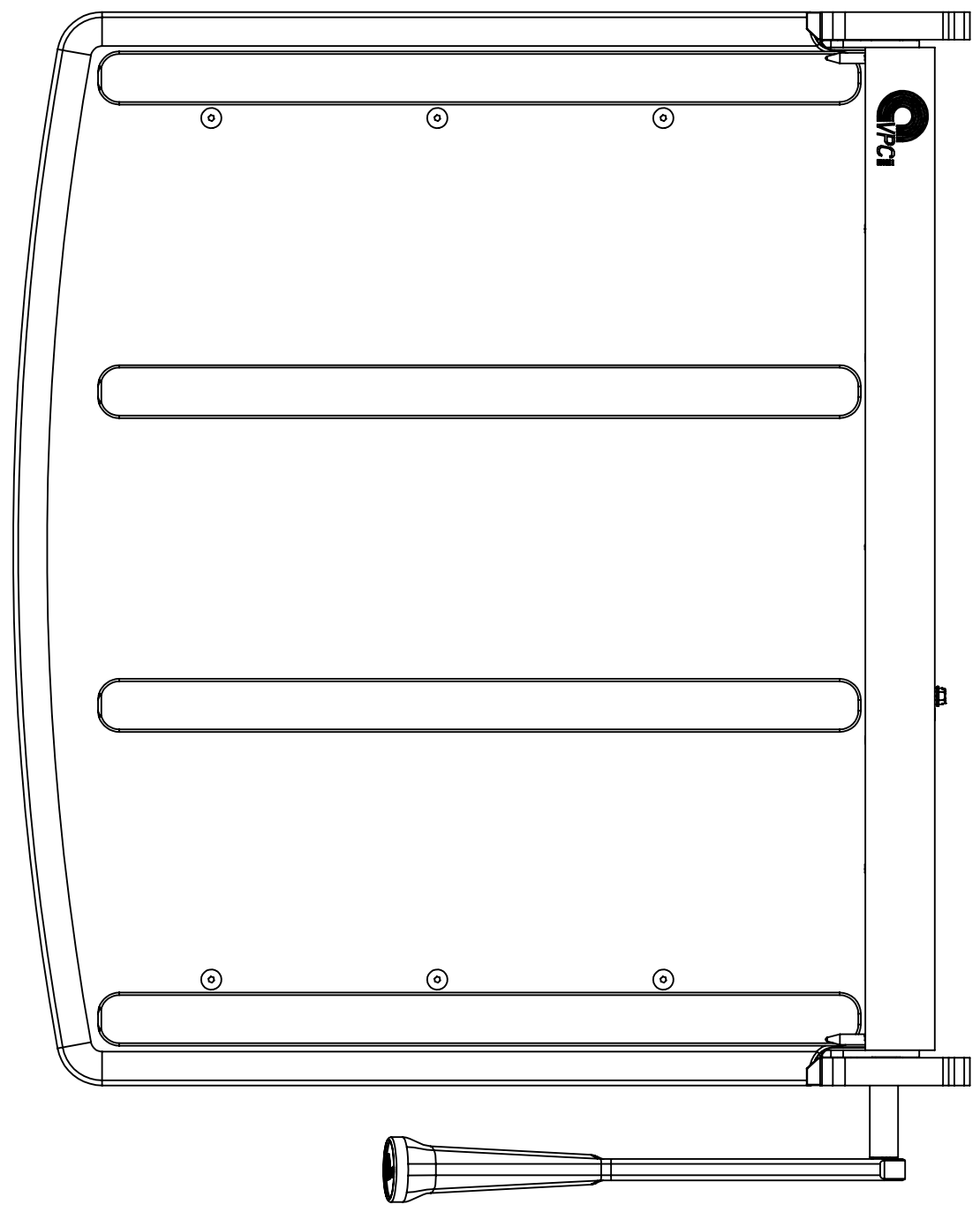
THE INFORMATION CONTAINED HEREIN IS THE EXCLUSIVE PROPERTY OF VIRGINIA PANEL CORPORATION AND IS SUBMITTED FOR USE BY THE CUSTOMER ONLY. THE DATA SHALL NOT BE DUPLICATED, USED OR DISCLOSED IN WHOLE OR IN PART FOR ANY PURPOSE OTHER THAN TO MAINTAIN THE EQUIPMENT PROVIDED. CONSULT WITH VIRGINIA PANEL CORPORATION ENGINEERING IF MORE DETAIL IS REQUIRED.

REVISIONS			
REV	DESCRIPTION	DATE	ENGR
H	ECN #15217	8/20/25	M ECKERT

PLATFORM SHIPPED ACCORDING TO P/N VARIANT	
310104410	PLATFORM SHIPPED ASSEMBLED TO RCVR
310104410-1	PLATFORM SHIPPED LOOSE. SEE ASSEMBLY BELOW



310104410-1 PLATFORM ASSEMBLY. HANDLE AND TORSION SHAFT NOT SHOWN FOR CLARITY



KEYING PLUG LOCATIONS							
PATTERN 1				PATTERN 4			
RECEIVER		ITA		RECEIVER		ITA	
PIN A	PIN C	SCREW A	SCREW C	PIN A	PIN C	SCREW A	SCREW C
INSTALLED	INSTALLED	OPEN	OPEN	OPEN	OPEN	INSTALLED	INSTALLED
PIN B	PIN D	SCREW B	SCREW D	PIN B	PIN D	SCREW B	SCREW D
OPEN	OPEN	INSTALLED	INSTALLED	INSTALLED	INSTALLED	OPEN	OPEN
PATTERN 2				PATTERN 5			
RECEIVER		ITA		RECEIVER		ITA	
PIN A	PIN C	SCREW A	SCREW C	PIN A	PIN C	SCREW A	SCREW C
INSTALLED	OPEN	OPEN	INSTALLED	OPEN	INSTALLED	INSTALLED	OPEN
PIN B	PIN D	SCREW B	SCREW D	PIN B	PIN D	SCREW B	SCREW D
INSTALLED	OPEN	INSTALLED	INSTALLED	INSTALLED	OPEN	OPEN	INSTALLED
PATTERN 3				PATTERN 6			
RECEIVER		ITA		RECEIVER		ITA	
PIN A	PIN C	SCREW A	SCREW C	PIN A	PIN C	SCREW A	SCREW C
OPEN	INSTALLED	INSTALLED	OPEN	INSTALLED	OPEN	OPEN	INSTALLED
PIN B	PIN D	SCREW B	SCREW D	PIN B	PIN D	SCREW B	SCREW D
OPEN	INSTALLED	INSTALLED	OPEN	OPEN	INSTALLED	INSTALLED	OPEN

6. GREEN 8-32 HEX HEAD SCREW & LOCK WASHER INCLUDED FOR OPTIONAL GROUND LOCATION TERMINATION.
5. IF KEYING IS REQUIRED USE VPC KEYING KIT PART NUMBER 310118112. SEE TABLE FOR KEYING OPTIONS.
4. RUBBER FEET MAY BE REMOVED AND RECEIVER SECURED TO A TABLE WITH 1/4-20 SCREWS.
3. WEIGHT: APPROXIMATELY 22 POUNDS, ALUMINUM AND STEEL.
2. MICROSWITCH WIRES NOT SHOWN. COLOR CODE AS FOLLOWS:  
 RED - NORMALLY CLOSED  
 WHITE - NORMALLY OPEN  
 BLACK - COMMON
1. FOR APPLICATION USE AND CARE INFORMATION CONSULT VPC USERS GUIDE @ WWW.VPC.COM
- NOTES:

MATING ITA	PROTECTIVE COVER
410104322 (12 MODULE)	310113518
410104474 (18 MODULE)	

**CUSTOMER DRAWING**

**VIRGINIA PANEL CORPORATION**  
WWW.VPC.COM

**RCV, G12X TABLE TOP WITH 15" PLATFORM**

DIMENSIONS ARE SHOWN AS: [MILLIMETERS] INCHES

SIZE	CAGE CODE	DWG. NO.	REV
D	18117	310104410	H

SCALE: 1:3 SHEET 1 OF 1