

4

3

2

1

DO NOT SCALE DRAWING

THE INFORMATION CONTAINED HEREIN IS THE EXCLUSIVE PROPERTY OF VIRGINIA PANEL CORP. AND IS SUBMITTED FOR USE BY THE CUSTOMER ONLY. THE DATA SHALL NOT BE DUPLICATED, USED, OR DISCLOSED IN WHOLE OR IN PART FOR ANY PURPOSE OTHER THAN TO MAINTAIN THE EQUIPMENT PROVIDED. CONSULT WITH VIRGINIA PANEL CORPORATION ENGINEERING IF MORE DETAIL IS REQUIRED.

REVISIONS

REV	DESCRIPTION	DATE	APPROVED
E	ECN # 4055	5/23/12	RF

D

D

C

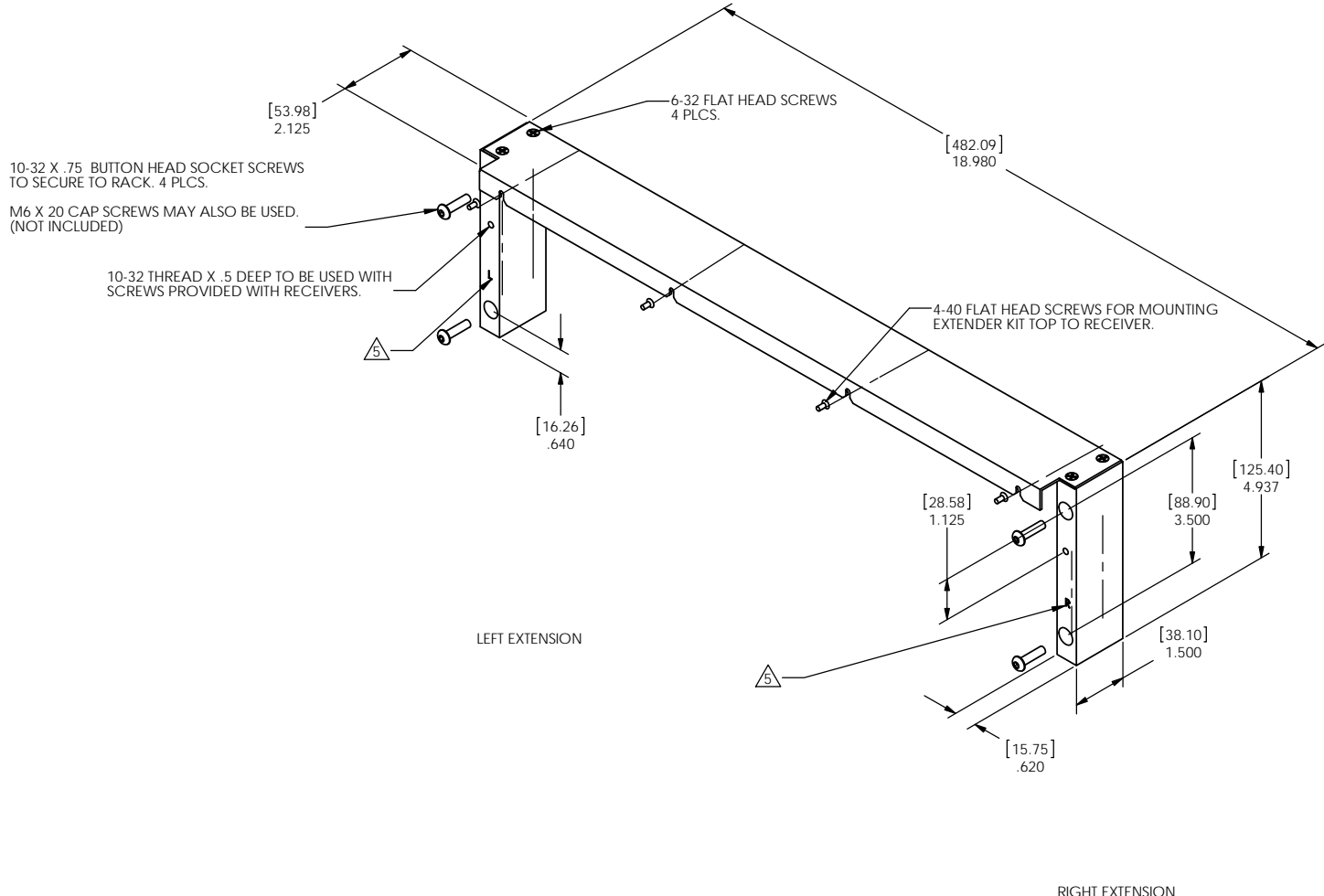
C

B

B

A

A



- △ "L" AND "R" DESIGNATE LEFT AND RIGHT RECEIVER EXTENDERS
- 4. FINISH: BLACK ANODIZE.
- 3. MATERIAL: ALUMINUM.
- 2. WEIGHT: APPROX. 2 POUNDS.
- 1. FOR APPLICATION, USE & CARE INFORMATION CONSULT VPC USERS GUIDE @WWW.VPC.COM

NOTES:

CUSTOMER DRAWING - CUSTOMER DRAWING								
SOLIDWORKS DRAWING FILE	DIMENSIONS ARE SHOWN AS: (millimeters) INCHES		SIGNATURES	DATE	VIRGINIA PANEL CORPORATION <small>WWW.VPC.COM</small> G12 RCV EXTENDER KIT			
	DR	CHK	R GARMAN	1/28/04				
	ENG	PROD						
	ASSY	O A						
	APPD							
MATERIAL	REMOVE BURRS. BREAK SHARP EDGES				SIZE			
FINISH					FSCM NO.	DWG. NO.	REV	
					C	18117	310113406	E
		SCALE: NONE	1/28/04	310113406	SHEET 1 OF 1			

4

3

2

1