

4

3

2

1

DO NOT SCALE DRAWING

THE INFORMATION CONTAINED HEREIN IS THE EXCLUSIVE PROPERTY OF VIRGINIA PANEL CORP. AND IS SUBMITTED FOR USE BY THE CUSTOMER ONLY. THE DATA SHALL NOT BE DUPLICATED, USED, OR DISCLOSED IN WHOLE OR IN PART FOR ANY PURPOSE OTHER THAN TO MAINTAIN THE EQUIPMENT PROVIDED. CONSULT WITH VIRGINIA PANEL CORPORATION ENGINEERING IF MORE DETAIL IS REQUIRED.

REVISIONS				
ZONE	REV	DESCRIPTION	DATE	APPROVED
	D	ECN #08-310-0114	10/27/2008	CC

D

D

C

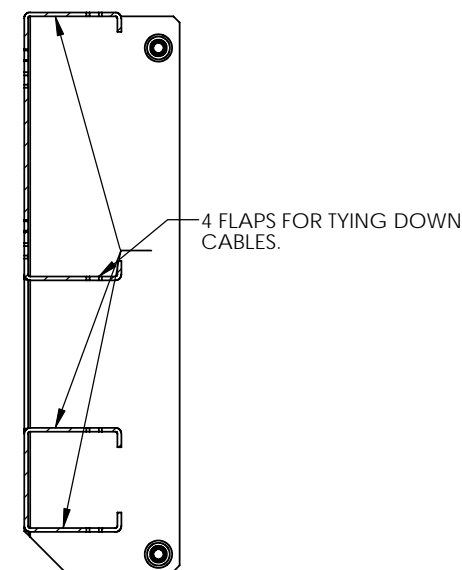
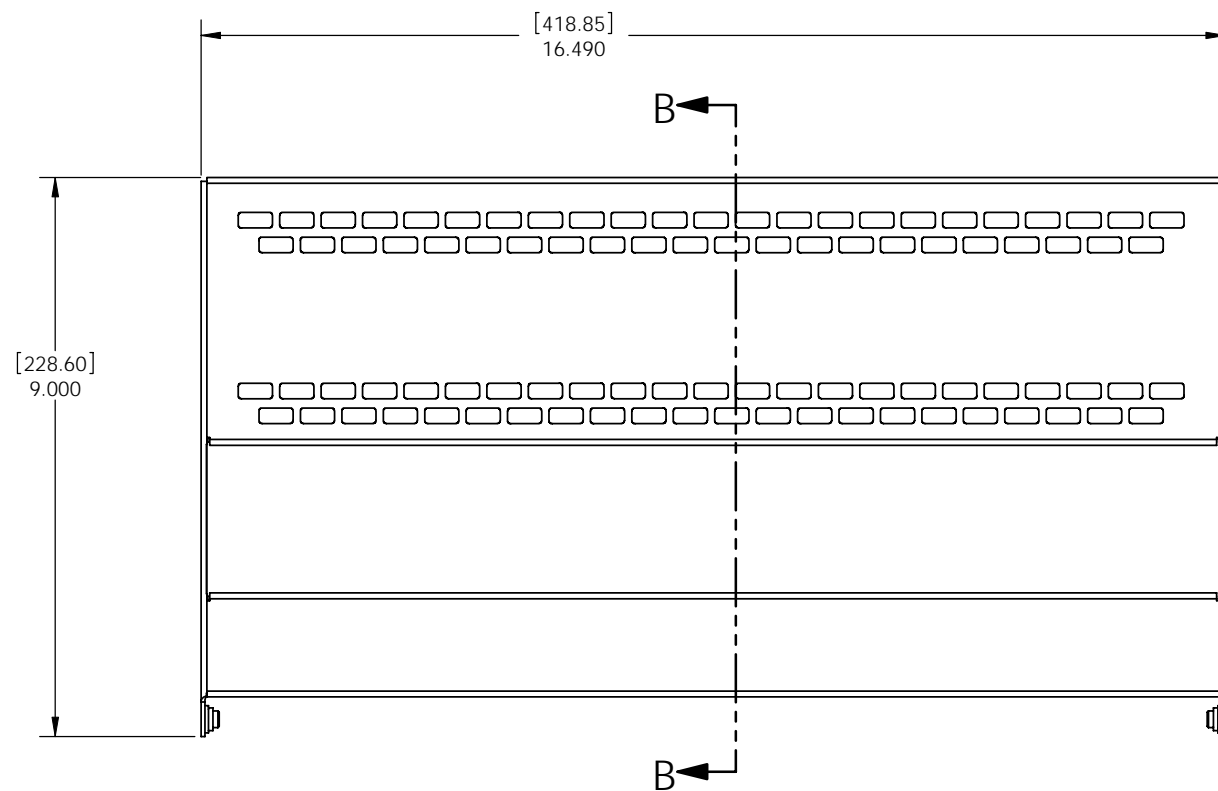
C

B

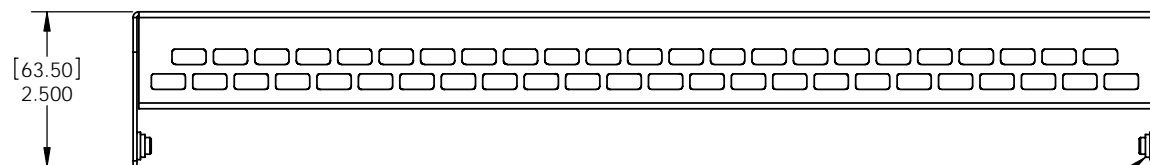
B

A

A



SECTION B-B
SCALE 1 : 2



- NOTES:
- 4 FOR USE WITH SLIDE KITS 28" AND LONGER.
 - 3 FOUR #8-32 X 0.50 BUTTON HEAD CAP SCREWS ARE INCLUDED
 - 2 CONSTRUCTED OF .063 THICK CLEAR ANODIZED ALUMINUM.
 - 1 FOR APPLICATION, USE & CARE INFORMATION CONSULT VPC USERS GUIDE @WWW.VPC.COM

CUSTOMER DRAWING - CUSTOMER DRAWING

SOLIDWORKS DRAWING FILE	DIMENSIONS ARE SHOWN AS:		SIGNATURES		DATE	VIRGINIA PANEL CORPORATION WWW.VPC.COM		
	[millimeters] INCHES		DR	E. HUBBARD	1/27/05			
	REMOVE BURRS. BREAK SHARP EDGES		CHK			CABLE TRAY SLIDE CONFIGURATION		
	MATERIAL		ENG					
FINISH		PROD			SIZE	CAGE CODE	DWG.NO.	REV
		ASSY			C	18117	310113424	D
		QA			SCALE: NONE	1/27/05	310113424	SHEET 1 OF 1
		APPD						

4

3

2

1