

4

3

2

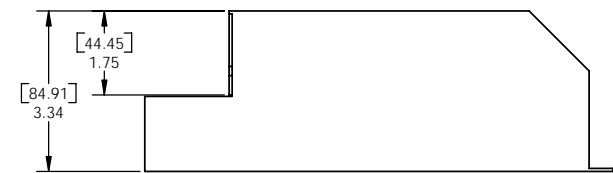
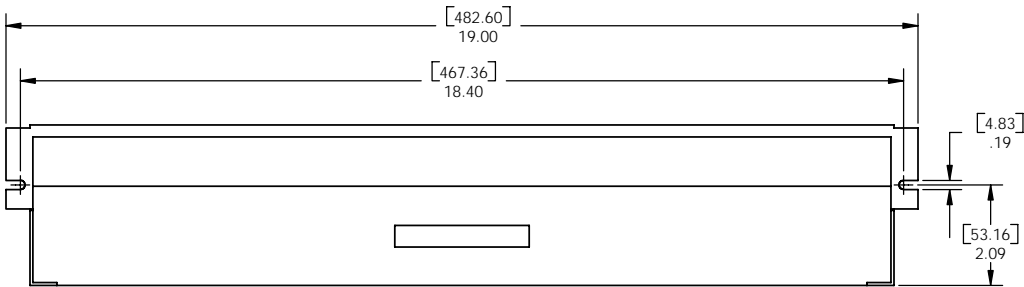
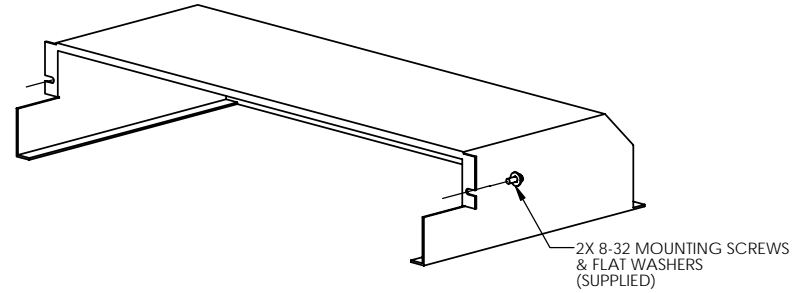
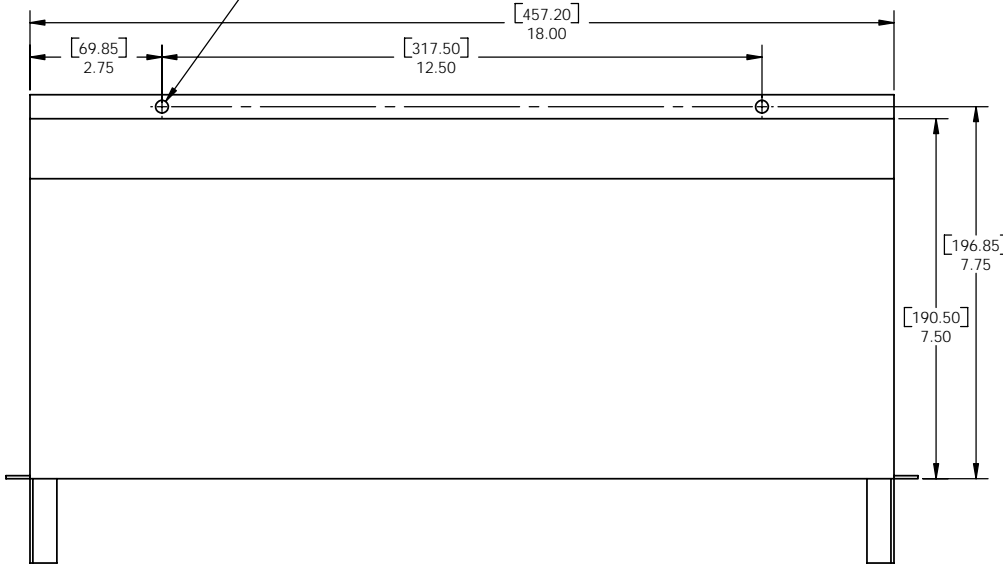
1

DO NOT SCALE DRAWING

THE INFORMATION CONTAINED HEREIN IS THE EXCLUSIVE PROPERTY OF VIRGINIA PANEL CORP. AND IS SUBMITTED FOR USE BY THE CUSTOMER ONLY. THE DATA SHALL NOT BE DUPLICATED, USED, OR DISCLOSED IN WHOLE OR IN PART FOR ANY PURPOSE OTHER THAN TO MAINTAIN THE EQUIPMENT PROVIDED. CONSULT WITH VIRGINIA PANEL CORPORATION ENGINEERING IF MORE DETAIL IS REQUIRED.

REVISIONS				
ZONE	REV	DESCRIPTION	DATE	APPROVED
	B	EC #05-310-0080	10/03/2005	TF

2X Ø .27 THRU  
FOR USE WITH SUPPLEMENTAL  
MOUNTING HARDWARE (CUSTOMER SUPPLIED)



4. FOR USE WITH RECEIVER 310122101, TABLETOP CONFIGURATION PLATFORM MOUNT, (RUBBER FEET REMOVED FROM PLATFORM)

3. HARDWARE KIT 310113446 NOT SHOWN

2. MATERIAL:  
ALUMINUM - PAINTED BLACK  
HARDWARE - STAINLESS STEEL

1. FOR APPLICATION, USE & CARE INFORMATION CONSULT VPC USERS GUIDE @WWW.VPC.COM

NOTES:

CUSTOMER DRAWING - CUSTOMER DRAWING

SOLIDWORKS DRAWING FILE	DIMENSIONS ARE SHOWN AS:		SIGNATURES		DATE	VIRGINIA PANEL CORPORATION			
	[millimeters]		DR	R HERRON	7/26/2005	WWW.VPC.COM			
	[INCHES]		CHK	T FITZGERALD	7/27/2005	REAR COVER, S6			
	REMOVE BURRS. BREAK SHARP EDGES		ENG	R HERRON	7/26/2005	TABLETOP CONFIGURATION, PLATFORM MOUNT			
	MATERIAL		PROD			SIZE	CAGE CODE	DWG.NO.	REV
FINISH		ASSY			C	18117	310113444	B	
		O A			SCALE: NONE		7/26/2005	310113444	SHEET 1 OF 1
		APPD							

4

3

2

1

D

D

C

C

B

B

A

A