

THE INFORMATION CONTAINED HEREIN IS THE EXCLUSIVE PROPERTY OF VIRGINIA PANEL CORPORATION AND IS SUBMITTED FOR USE BY THE CUSTOMER ONLY. THE DATA SHALL NOT BE DUPLICATED, USED, OR DISCLOSED IN WHOLE OR IN PART FOR ANY PURPOSE OTHER THAN TO MAINTAIN THE EQUIPMENT PROVIDED.

REV	DESCRIPTION	DATE	ENGINEER
A	ORIGINAL RELEASE ECN #7656	8/16/17	L LOCKRIDGE
B	ECN #7733	10/2/17	L LOCKRIDGE
C	ECN #7823	11/3/17	L LOCKRIDGE
D	ECN #7824	11/3/17	L LOCKRIDGE

6. ASSEMBLY INSTRUCTIONS ON SHEET 2.

5 OPENING ALLOWS THIS ENCLOSURE TO BE EASILY INSTALLED ON A PRE-WIRED RECEIVER

4 MAX CABLE BUNDLE AREA = 1.80 SQ. IN.

3. FOR USE WITH i1 RECEIVER P/N 310128101 OR 310128102.

2. MATERIALS:
BACKSHELL BODY: ALUMINUM ALLOY, PAINTED BLACK
CABLE CLAMP ASSEMBLY: BLACK NYLON BUSHING WITH CHROMATE AND POWDER COATED MATTE BLACK ALUMINUM CLAMP
HARWARE: STAINLESS STEEL

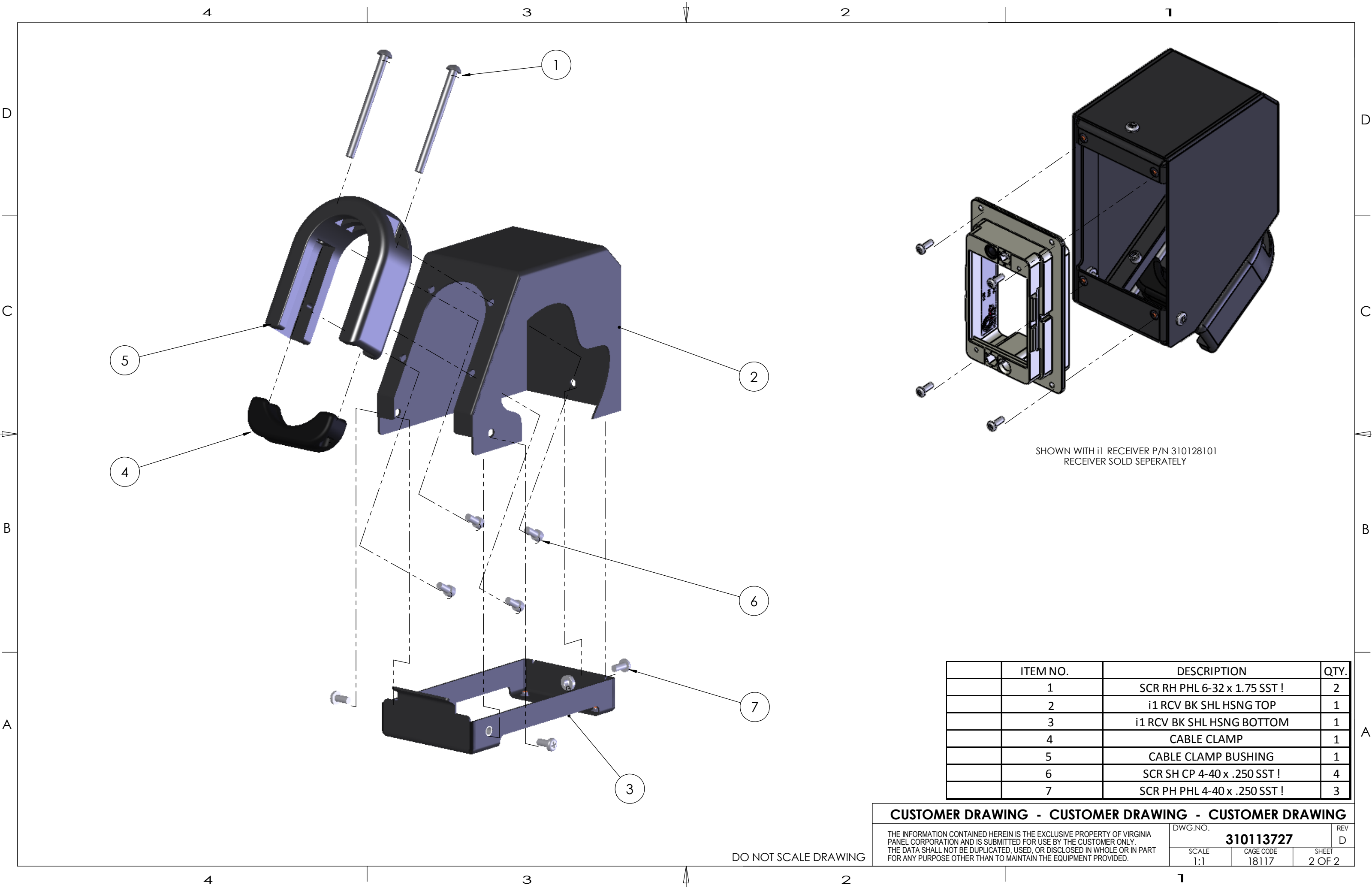
RELATIVE CONNECTOR POSITIONS AND WIRE ROUTING ARE GENERIC AND MAY VARY WITH PINOUT
DIMENSIONS ARE SHOWN AS:
[MILLIMETERS]
INCHES

CUSTOMER DRAWING

BACKSHELL, RCV,
i1 W/LRG CBL CLMP

DWG.NO. **310113727** REV D

SCALE 1:1 CAGE CODE 18117 SHEET 1 OF 2



	ITEM NO.	DESCRIPTION	QTY.
	1	SCR RH PHL 6-32 x 1.75 SST !	2
	2	i1 RCV BK SHL HSNG TOP	1
	3	i1 RCV BK SHL HSNG BOTTOM	1
	4	CABLE CLAMP	1
	5	CABLE CLAMP BUSHING	1
	6	SCR SH CP 4-40 x .250 SST !	4
	7	SCR PH PHL 4-40 x .250 SST !	3

CUSTOMER DRAWING - CUSTOMER DRAWING - CUSTOMER DRAWING

THE INFORMATION CONTAINED HEREIN IS THE EXCLUSIVE PROPERTY OF VIRGINIA PANEL CORPORATION AND IS SUBMITTED FOR USE BY THE CUSTOMER ONLY.
THE DATA SHALL NOT BE DUPLICATED, USED, OR DISCLOSED IN WHOLE OR IN PART FOR ANY PURPOSE OTHER THAN TO MAINTAIN THE EQUIPMENT PROVIDED.

DWG.NO.

310113727

REV

D

SCALE

1:1

CAGE CODE

18117

SHEET

2 OF 2

DO NOT SCALE DRAWING