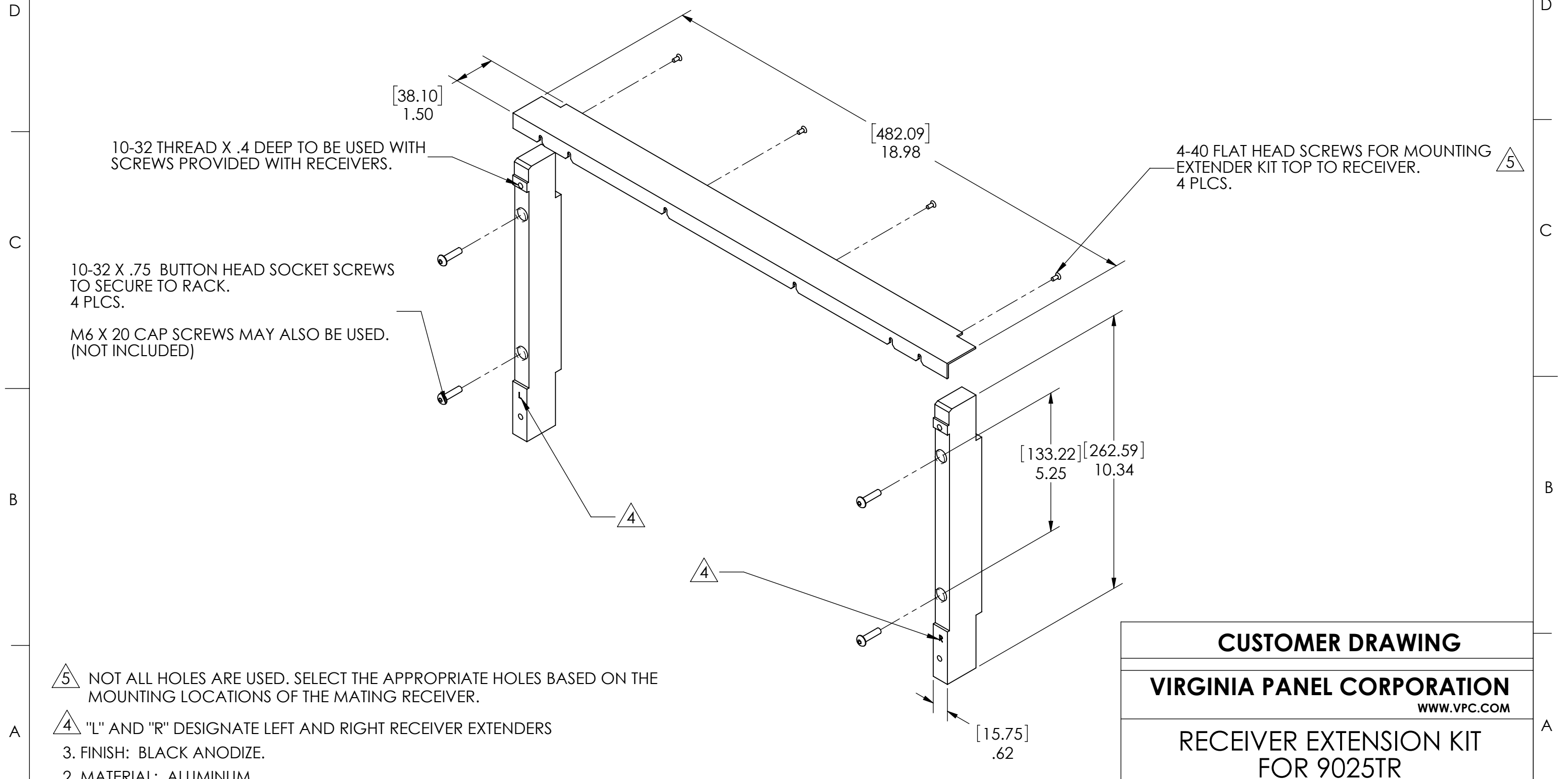


DO NOT SCALE DRAWING

THE INFORMATION CONTAINED HEREIN IS THE EXCLUSIVE PROPERTY OF VIRGINIA PANEL CORPORATION AND IS SUBMITTED FOR USE BY THE CUSTOMER ONLY. THE DATA SHALL NOT BE DUPLICATED, USED, OR DISCLOSED IN WHOLE OR IN PART FOR ANY PURPOSE OTHER THAN TO MAINTAIN THE EQUIPMENT PROVIDED. CONSULT WITH VIRGINIA PANEL CORPORATION ENGINEERING IF MORE DETAIL IS REQUIRED.

| REVISIONS |                             |          |          |
|-----------|-----------------------------|----------|----------|
| REV       | DESCRIPTION                 | DATE     | ENGR     |
| A         | ORIGINAL RELEASE; ECN #9962 | 2/5/2020 | R GARMAN |



5 NOT ALL HOLES ARE USED. SELECT THE APPROPRIATE HOLES BASED ON THE MOUNTING LOCATIONS OF THE MATING RECEIVER.

4 "L" AND "R" DESIGNATE LEFT AND RIGHT RECEIVER EXTENDERS

3. FINISH: BLACK ANODIZE.

2. MATERIAL: ALUMINUM.

1. FOR APPLICATION USE AND CARE INFORMATION CONSULT VPC USERS GUIDE @ WWW.VPC.COM

NOTES:

CUSTOMER DRAWING

VIRGINIA PANEL CORPORATION

WWW.VPC.COM

RECEIVER EXTENSION KIT FOR 9025TR

|                          |      |           |            |              |
|--------------------------|------|-----------|------------|--------------|
| DIMENSIONS ARE SHOWN AS: | SIZE | CAGE CODE | DWG.NO.    | REV          |
| [MILLIMETERS]<br>INCHES  | B    | 18117     | 310113769  | A            |
| SCALE: NONE              |      | 310113769 | 02/05/2020 | SHEET 1 OF 1 |