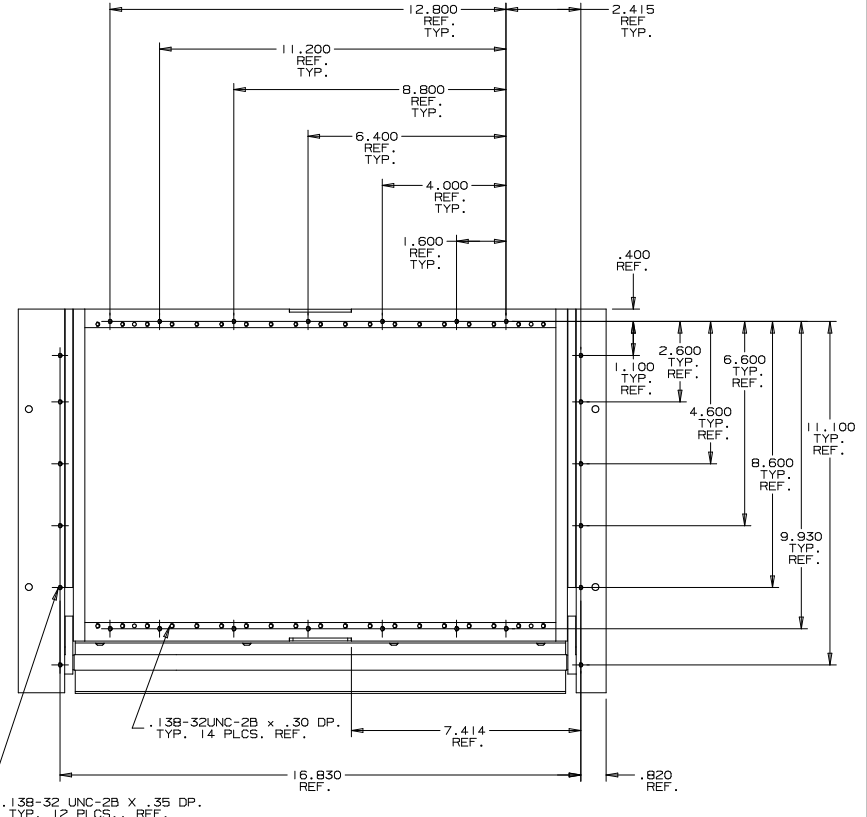
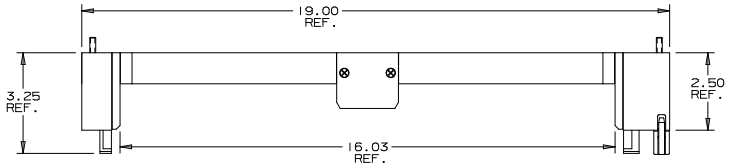


8 7 6 5 4 3 2 1

DO NOT SCALE DRAWING

THE INFORMATION CONTAINED HEREIN IS THE EXCLUSIVE PROPERTY OF VIRGINIA PANEL CORP. AND IS SUBMITTED FOR USE BY THE CUSTOMER ONLY. THE DATA SHALL NOT BE DUPLICATED, USED, OR DISCLOSED IN WHOLE OR IN PART FOR ANY PURPOSE OTHER THAN TO MAINTAIN THE EQUIPMENT PROVIDED.

ZONE	REV	DESCRIPTION	DATE	APPROVED
	A	REVISED MOUNTING HOLES	8/5/92	R. G.
	B	ADD VPC LOGO	2/8/93	MD
	C	INCORPORATED ECN #937 & #938	3/18/93	R. G.
	D	EC 08-310-0003	1/4/08	EH



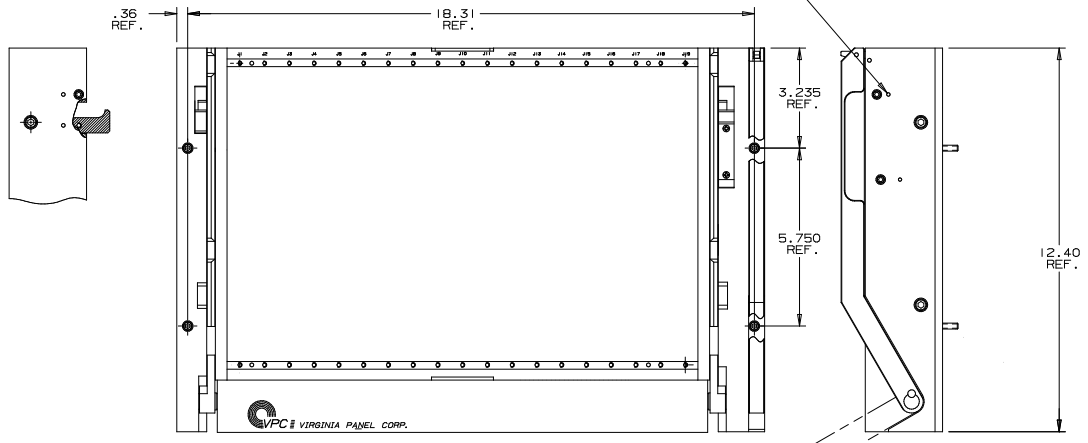
.1250/.1245 DIA. THRU USING .124/.123 DIA. HOLES TYP. 2 PLCS. EACH SIDE

.139-32UNC-2B x .30 DP. TYP. 14 PLCS. REF.

.139-32 UNC-2B X .35 DP. TYP. 12 PLCS. REF.

D  
C  
B  
A

D  
C  
B  
A



WIRING CODE	
BLACK	COMMON
WHITE	NORMALLY OPEN
RED	NORMALLY CLOSED

310115103

FIND NO.	QTY REQD	CODE IDENT	PART NO.	DESCRIPTION	SOURCE OF SUPPLY
PARTS LIST					
DIMENSIONS ARE IN INCHES UNLESS OTHERWISE SPECIFIED.			CONTRACT NO.		
TOLERANCES ARE:			SIGNATURES		
DEC. XX ± .02 FRAC ±			DR	R. GARMAN	7/30/92
.XXX ± .01 ANG ±			CHK	H. BURGERS	8/29/92
REMOVE BURRS, BREAK SHARP EDGES.			ENG		
MATERIAL			APPD	H. BURGERS	8/29/92
FINISH			APPD		
NEXT ASSY USED ON APPLICATION			APPD		
			VIRGINIA PANEL CORP.		
			RECEIVER ASSEMBLY 19 MODULE		
			SIZE/FSCM NO.	DWG NO.	REV
			D 18117	4316 00 000	D
			SCALE: 1/2	43160000	7/30/90
			SHEET 1 OF 1		

8 7 6 5 4 3 2 1