

4

3

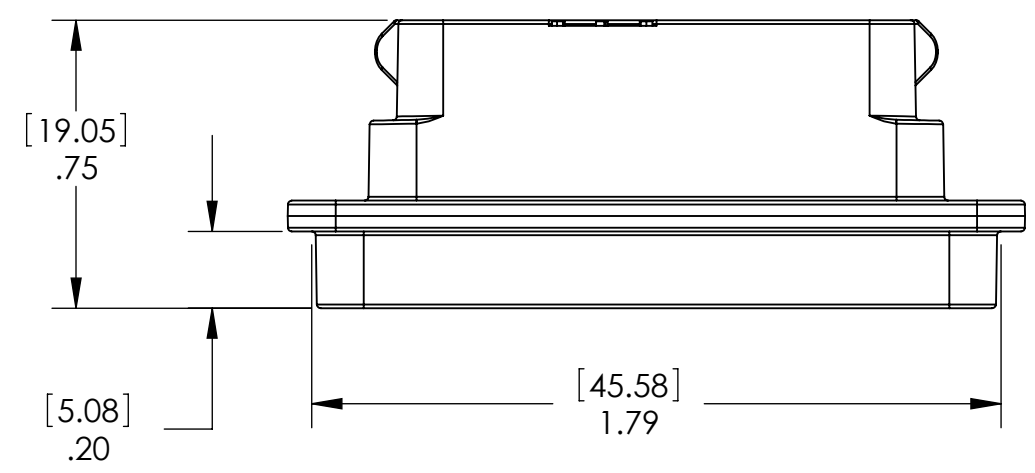
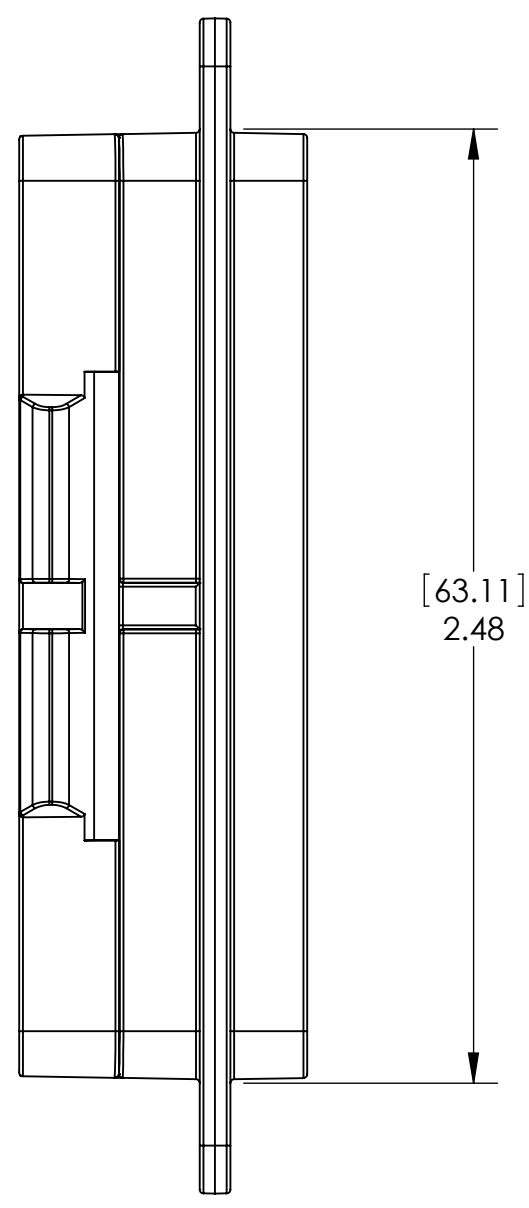
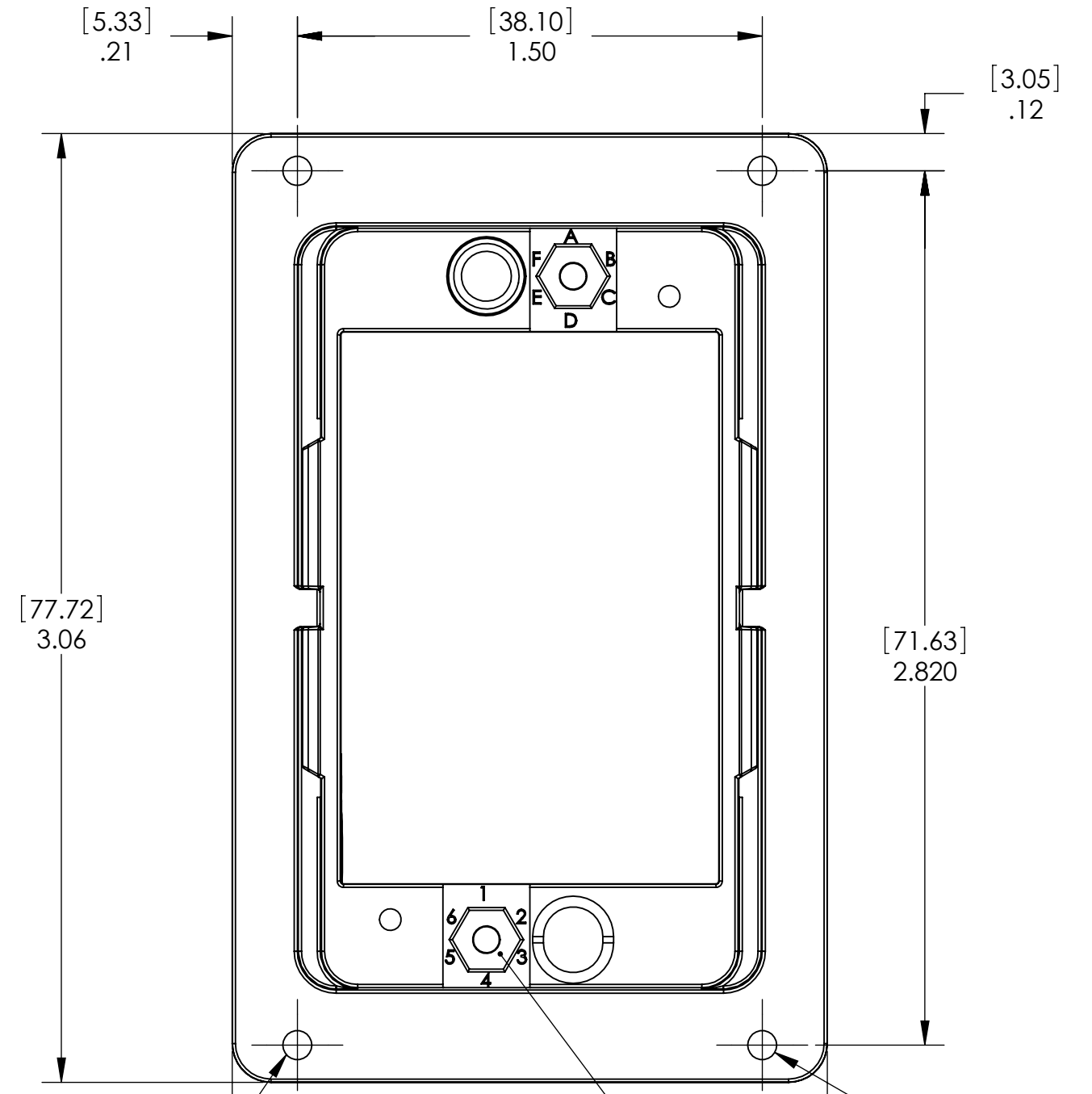
2

1

DO NOT SCALE DRAWING

THE INFORMATION CONTAINED HEREIN IS THE EXCLUSIVE PROPERTY OF VIRGINIA PANEL CORPORATION AND IS SUBMITTED FOR USE BY THE CUSTOMER ONLY. THE DATA SHALL NOT BE DUPLICATED, USED, OR DISCLOSED IN WHOLE OR IN PART FOR ANY PURPOSE OTHER THAN TO MAINTAIN THE EQUIPMENT PROVIDED. CONSULT WITH VIRGINIA PANEL CORPORATION ENGINEERING IF MORE DETAIL IS REQUIRED.

REVISIONS			
REV	DESCRIPTION	DATE	ENGR
E	ECN #10624	9/1/20	J HARDIGREE



RECOMMENDED LOCATION FOR ATTACHING PROTECTIVE COVER

CAVITY FOR KEYING KIT, TYP. 2 PLCS. ACCESSORY P/N 310113461 (2 KEYS PER KIT) NOT INCLUDED WITH RECEIVER

4 STANDARD MINIMUM RECEIVER SPACING BETWEEN PANEL CUTOUTS IS 1.75" [44.45mm]. FOR A COMPLETE LIST OF SPACING DIMENSIONS, SEE i1 RECEIVER MOUNTING SECTION IN THE i1 USER'S MANUAL.

3. PROTECTIVE COVER INCLUDED WITH ASSEMBLY (NOT SHOWN)

2. MATERIALS:
FRAME: NICKEL PLATED ALUMINUM ALLOY
BUSHING: THERMOPLASTIC
MOUNTING HARDWARE: STAINLESS STEEL

1. FOR APPLICATION USE & CARE INFORMATION CONSULT VPC USERS GUIDE @WWW.VPC.COM

NOTES:

CUSTOMER DRAWING

VIRGINIA PANEL CORPORATION
WWW.VPC.COM

i1 RECEIVER ASSEMBLY

DIMENSIONS ARE SHOWN AS:	SIZE	CAGE CODE	DWG. NO.	REV
[MILLIMETERS]	C	18117	310128101	E
INCHES	SCALE: 1:1	310128101	4/7/09	SHEET 1 OF 1

4

3

2

1