

4

3

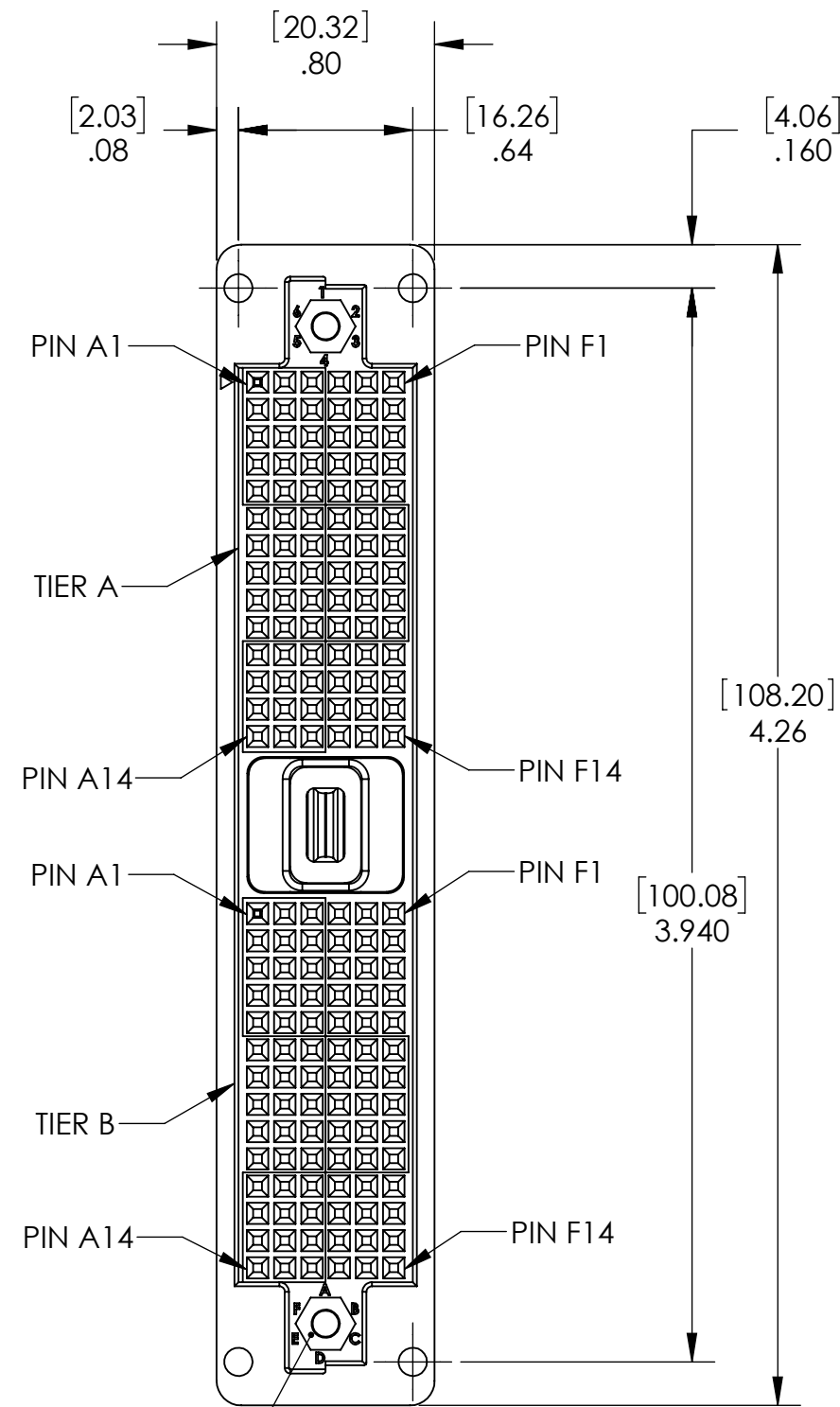
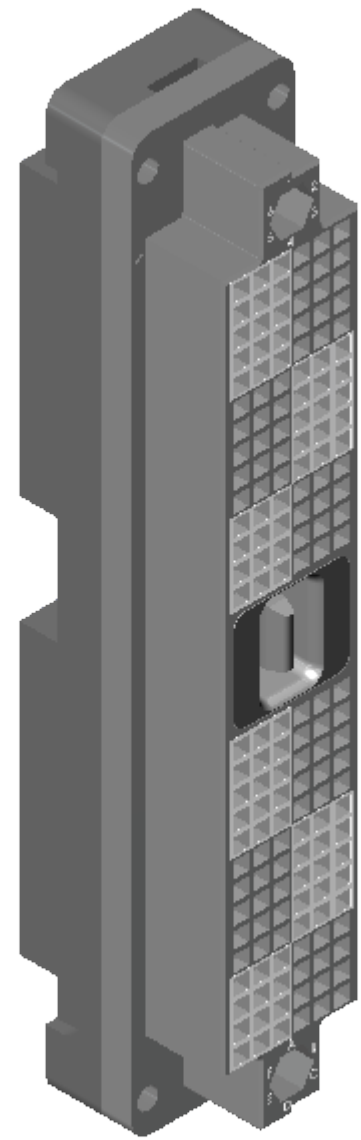
2

1

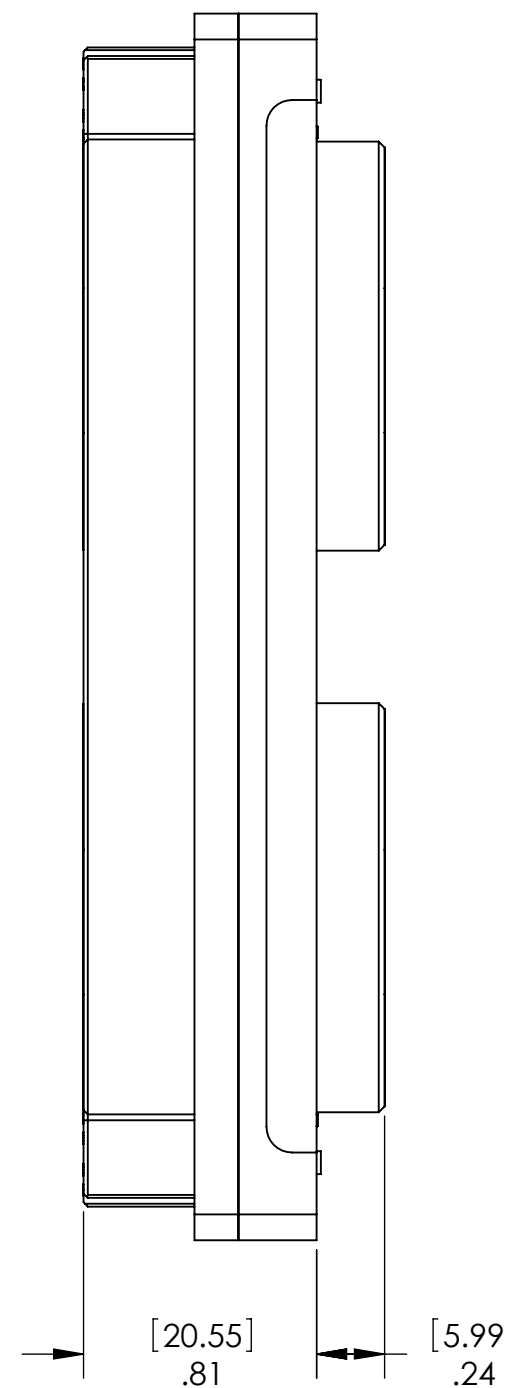
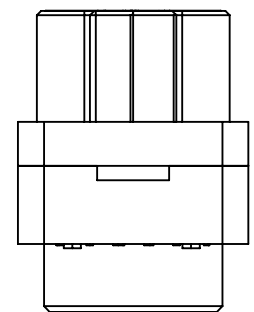
DO NOT SCALE DRAWING

THE INFORMATION CONTAINED HEREIN IS THE EXCLUSIVE PROPERTY OF VPC AND IS PERMITTED FOR USE BY THE CUSTOMER ONLY. THE DATA SHALL NOT BE DUPLICATED, USED, OR DISCLOSED IN WHOLE OR IN PART FOR ANY PURPOSE OTHER THAN TO MAINTAIN THE EQUIPMENT PROVIDED. CONSULT WITH VPC ENGINEERING IF MORE DETAIL IS REQUIRED.

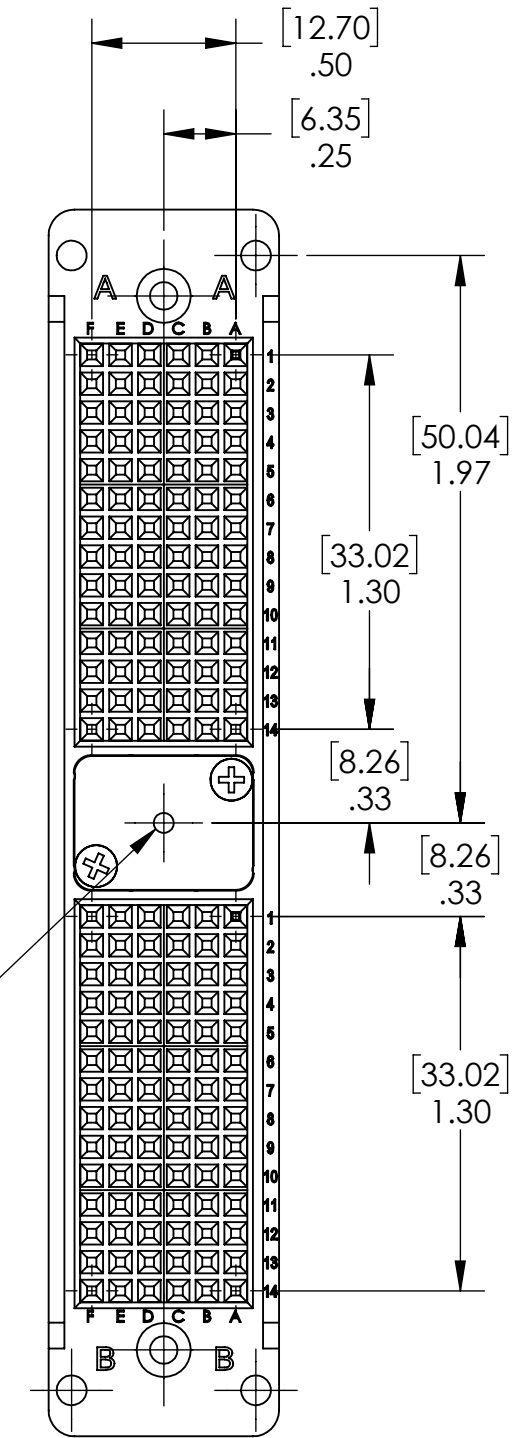
REVISIONS			
REV	DESCRIPTION	DATE	ENGR
J	ECN #15121	7/3/25	ZF



CAVITY FOR KEYING KIT, TYP. 2 PLCS. ACCESSORY P/N 310113461 (2 KEYS PER KIT) NOT INCLUDED WITH RECEIVER



#2-56 UNC-2B x .20 DP.



- 3. RECIEVER IS PRE-LOADED WITH 168 DOUBLE FEMALE QUADRAPADDLE SIGNAL CONTACTS, VPC P/N 610138200.
- 2. MATERIALS:
HOUSING: BLACK THERMOPLASTIC
BUSHING: STAINLESS STEEL
LATCH POST: STAINLESS STEEL
MOUNTING HARDWARE: STAINLESS STEEL

1. FOR MORE INFORMATION, VISIT VPC.COM.

NOTES:

CUSTOMER DRAWING

VIRGINIA PANEL CORPORATION
WWW.VPC.COM

i2 RCV ASM, 168 PIN W/CNTS

DIMENSIONS ARE SHOWN AS:	SIZE	CAGE CODE	DWG. NO.	REV
[MILLIMETERS]	C	18117	310130101	J
INCHES	SCALE: NONE	310130101	3/5/10	SHEET 1 OF 2

4

3

2

1

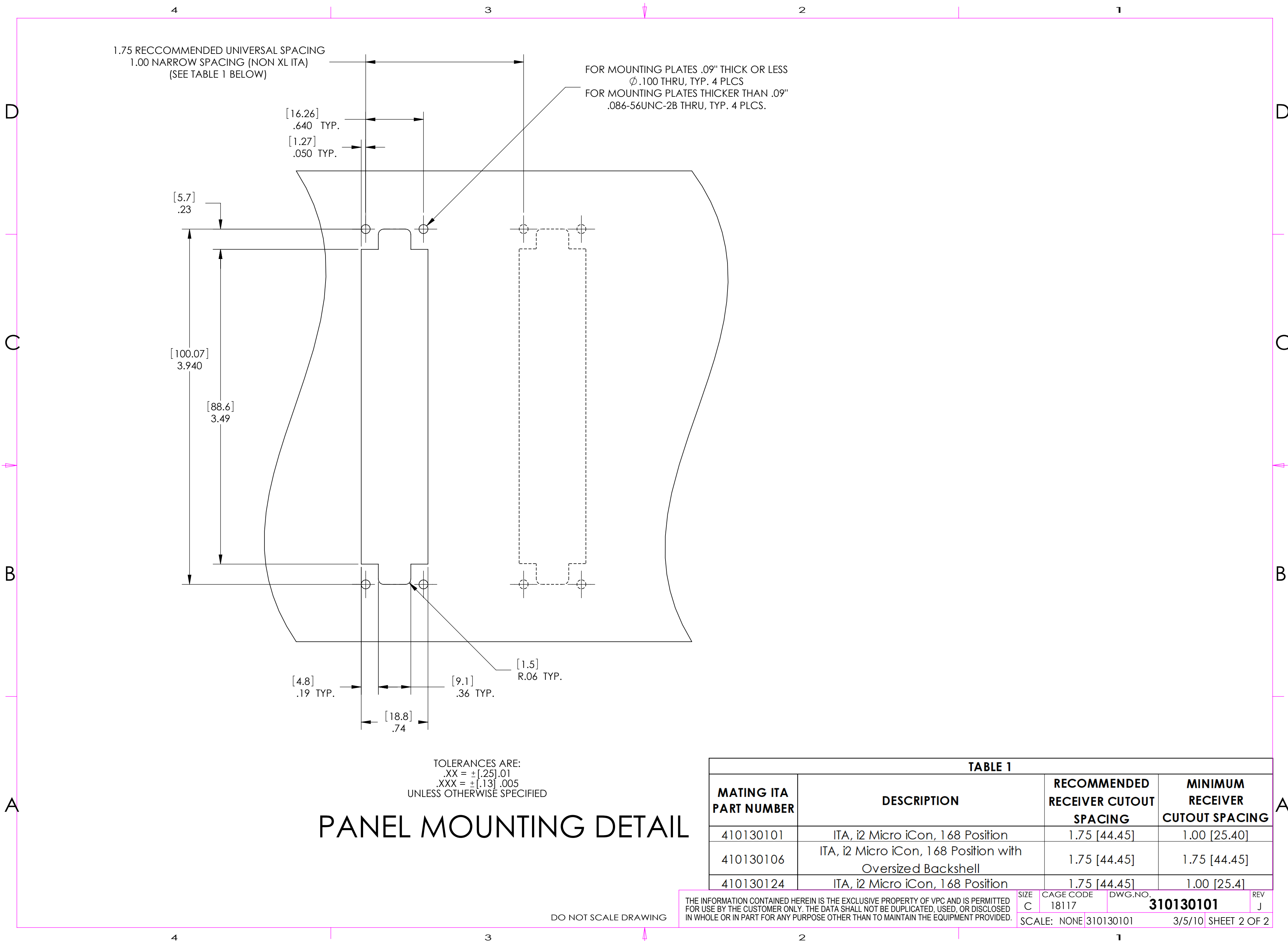


TABLE 1			
MATING ITA PART NUMBER	DESCRIPTION	RECOMMENDED RECEIVER CUTOUT SPACING	MINIMUM RECEIVER CUTOUT SPACING
410130101	ITA, i2 Micro iCon, 1 68 Position	1.75 [44.45]	1.00 [25.40]
410130106	ITA, i2 Micro iCon, 1 68 Position with Oversized Backshell	1.75 [44.45]	1.75 [44.45]
410130124	ITA, i2 Micro iCon, 1 68 Position	1.75 [44.45]	1.00 [25.4]

THE INFORMATION CONTAINED HEREIN IS THE EXCLUSIVE PROPERTY OF VPC AND IS PERMITTED FOR USE BY THE CUSTOMER ONLY. THE DATA SHALL NOT BE DUPLICATED, USED, OR DISCLOSED IN WHOLE OR IN PART FOR ANY PURPOSE OTHER THAN TO MAINTAIN THE EQUIPMENT PROVIDED.

SIZE C CAGE CODE 18117 DWG.NO. 310130101 REV J

SCALE: NONE 310130101 3/5/10 SHEET 2 OF 2