

4

3

2

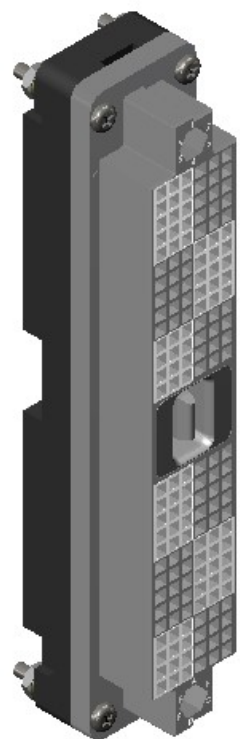
1

DO NOT SCALE DRAWING

THE INFORMATION CONTAINED HEREIN IS THE EXCLUSIVE PROPERTY OF VPC AND IS PERMITTED FOR USE BY THE CUSTOMER ONLY. THE DATA SHALL NOT BE DUPLICATED, USED, OR DISCLOSED IN WHOLE OR IN PART FOR ANY PURPOSE OTHER THAN TO MAINTAIN THE EQUIPMENT PROVIDED. CONSULT WITH VPC ENGINEERING IF MORE DETAIL IS REQUIRED.

REVISIONS			
REV	DESCRIPTION	DATE	ENGR
J	ECN #14238	5/31/24	M SALE

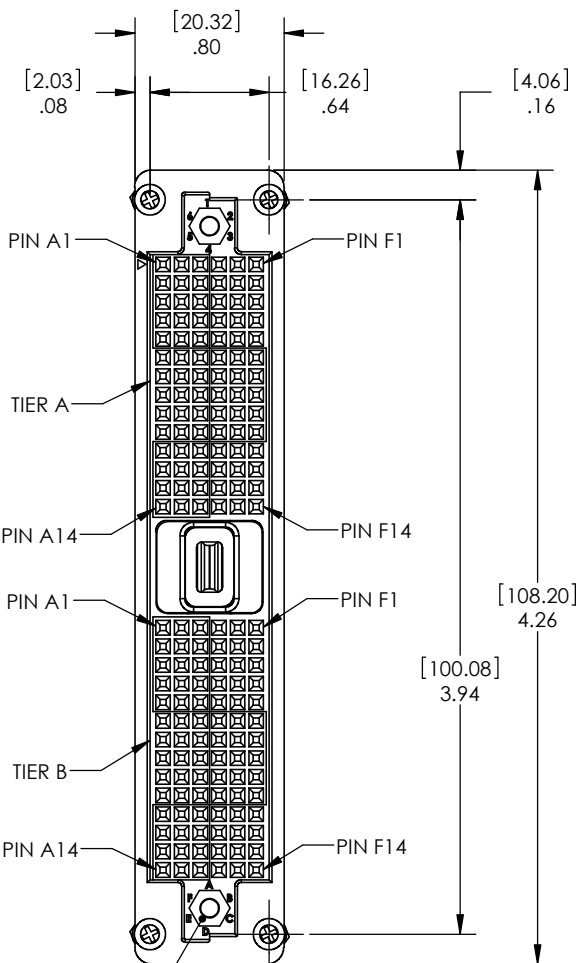
D



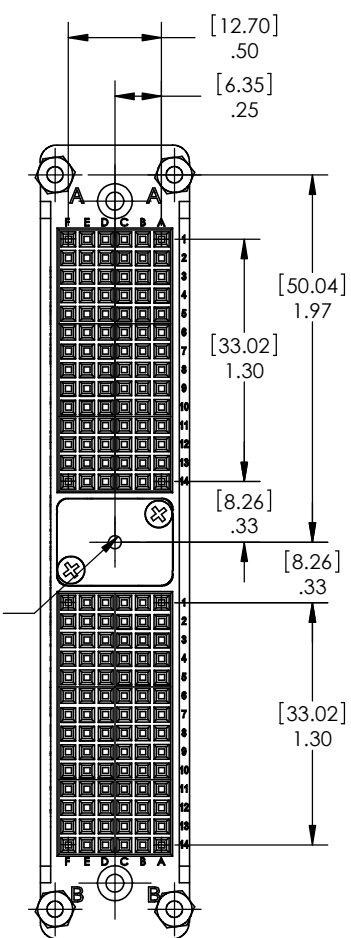
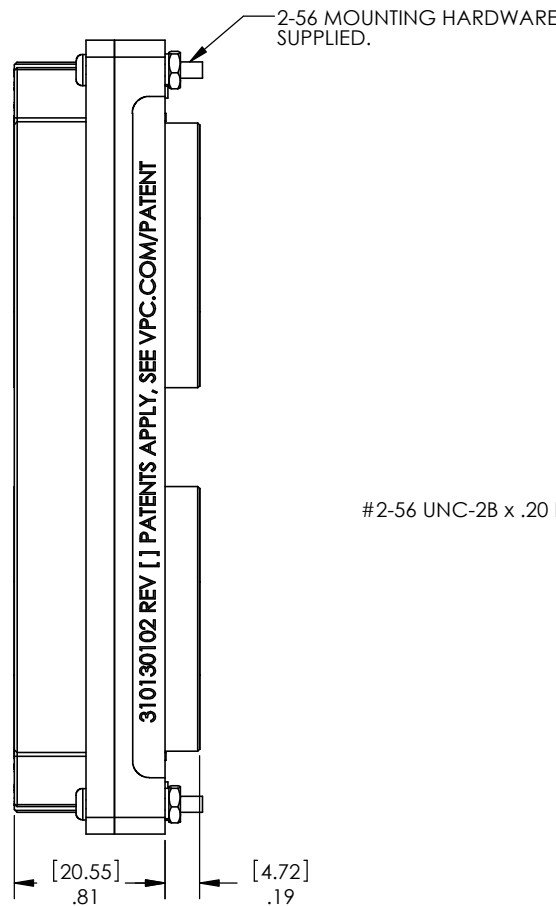
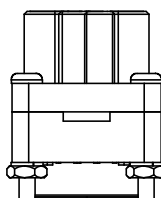
C

B

A



CAVITY FOR KEYING KIT, TYP. 2 PLCS. ACCESSORY P/N 310113461 (2 KEYS PER KIT) NOT INCLUDED WITH RECEIVER



D

C

B

A

2. MATERIALS:
 HOUSING: BLACK THERMOPLASTIC
 BUSHING: STAINLESS STEEL
 LATCH POST: STAINLESS STEEL
 MOUNTING HARDWARE: STAINLESS STEEL

1. FOR MORE INFORMATION, VISIT VPC.COM.
NOTES:

CUSTOMER DRAWING

VIRGINIA PANEL CORPORATION
WWW.VPC.COM

i2 RCV ASM, 168 POSITION

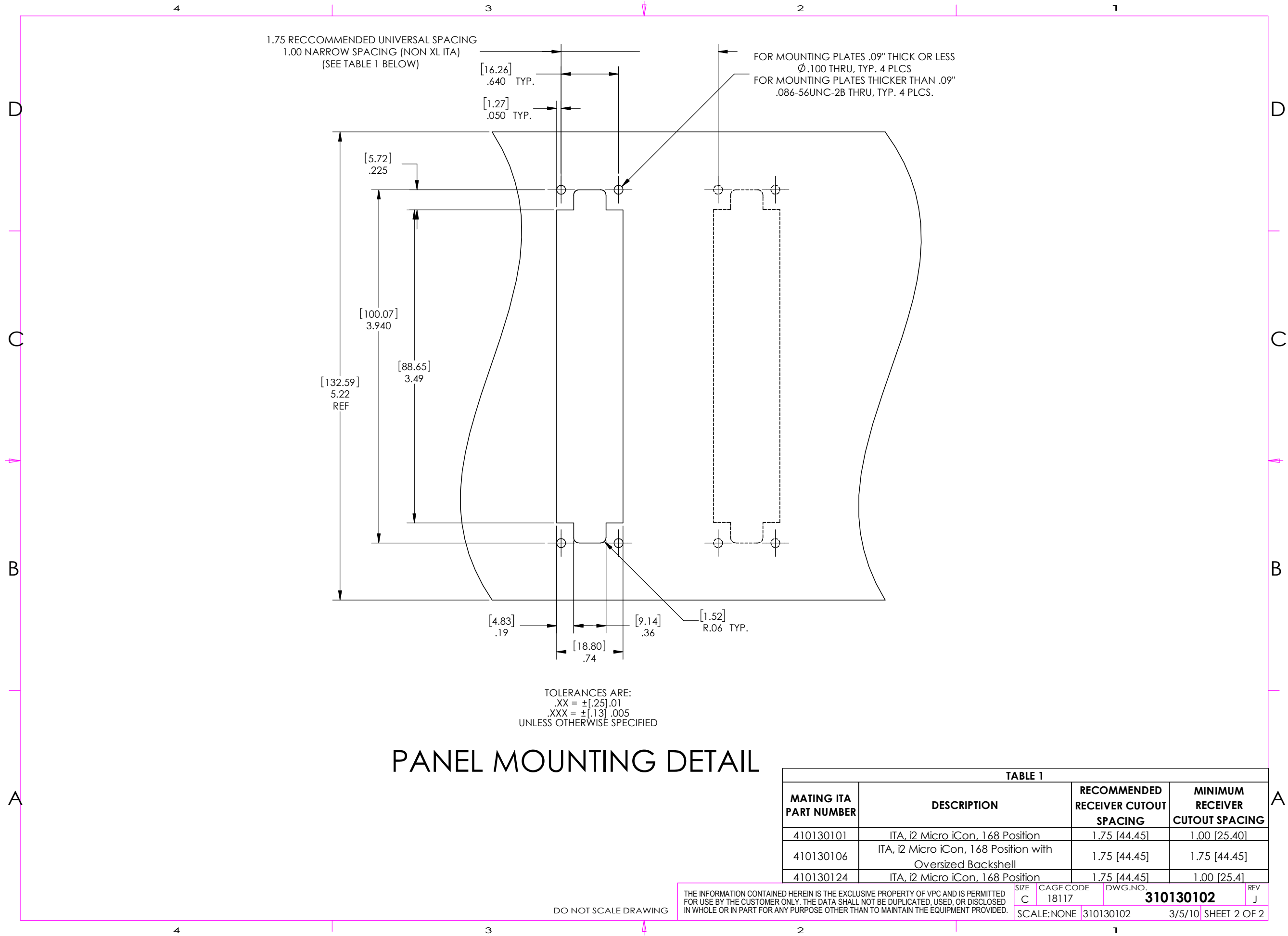
DIMENSIONS ARE SHOWN AS:	SIZE	CAGE CODE	DWG.NO.	REV
[MILLIMETERS]	C	18117	310130102	J
INCHES	SCALE: NONE	310130102	3/5/10	SHEET 1 OF 2

4

3

2

1



PANEL MOUNTING DETAIL

TABLE 1			
MATING ITA PART NUMBER	DESCRIPTION	RECOMMENDED RECEIVER CUTOUT SPACING	MINIMUM RECEIVER CUTOUT SPACING
410130101	ITA, i2 Micro iCon, 168 Position	1.75 [44.45]	1.00 [25.40]
410130106	ITA, i2 Micro iCon, 168 Position with Oversized Backshell	1.75 [44.45]	1.75 [44.45]
410130124	ITA, i2 Micro iCon, 168 Position	1.75 [44.45]	1.00 [25.4]

THE INFORMATION CONTAINED HEREIN IS THE EXCLUSIVE PROPERTY OF VPC AND IS PERMITTED FOR USE BY THE CUSTOMER ONLY. THE DATA SHALL NOT BE DUPLICATED, USED, OR DISCLOSED IN WHOLE OR IN PART FOR ANY PURPOSE OTHER THAN TO MAINTAIN THE EQUIPMENT PROVIDED.

SIZE C	CAGE CODE 18117	DWG.NO. 310130102	REV J
SCALE:NONE		310130102	3/5/10 SHEET 2 OF 2

DO NOT SCALE DRAWING