

4

3

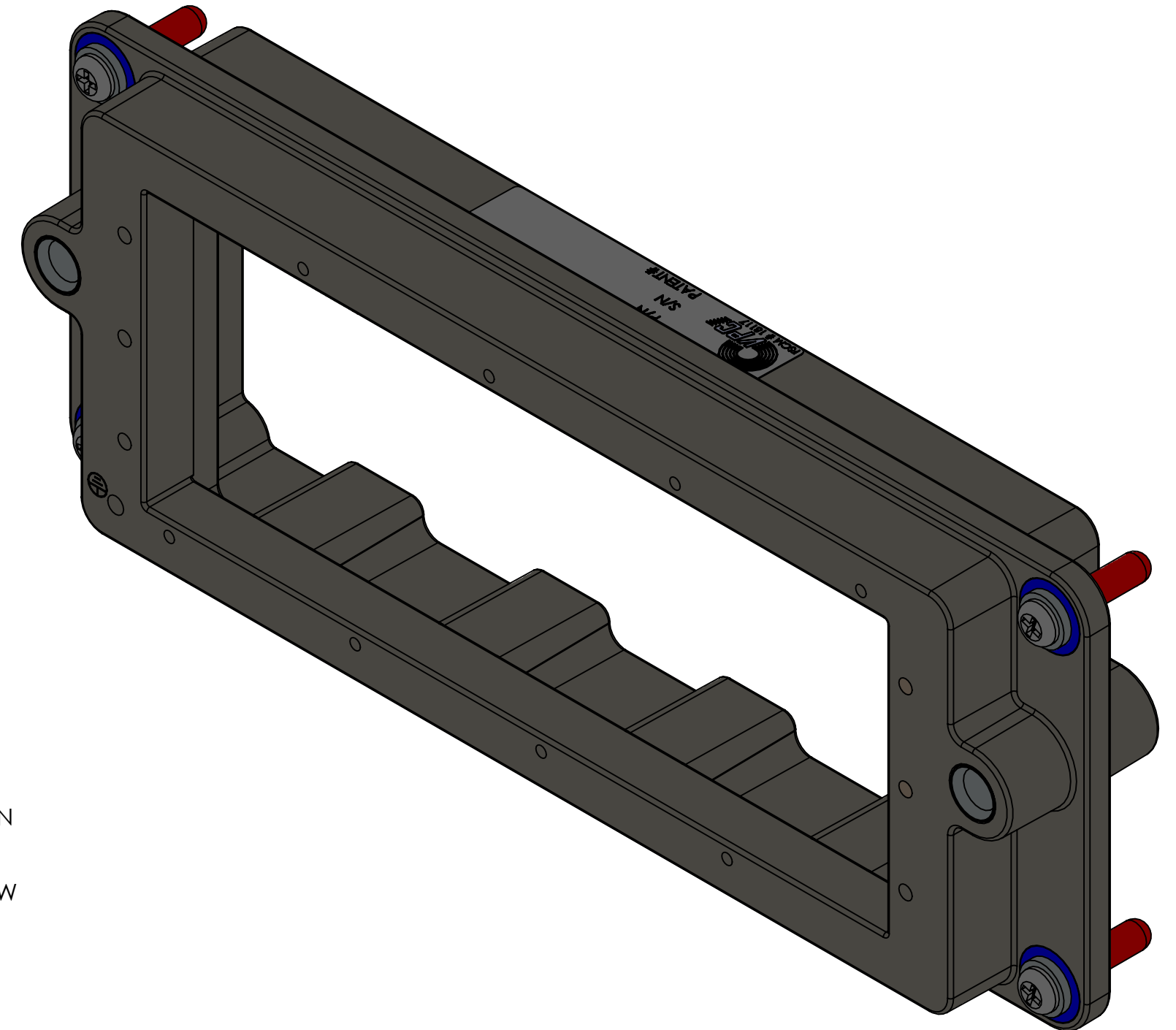
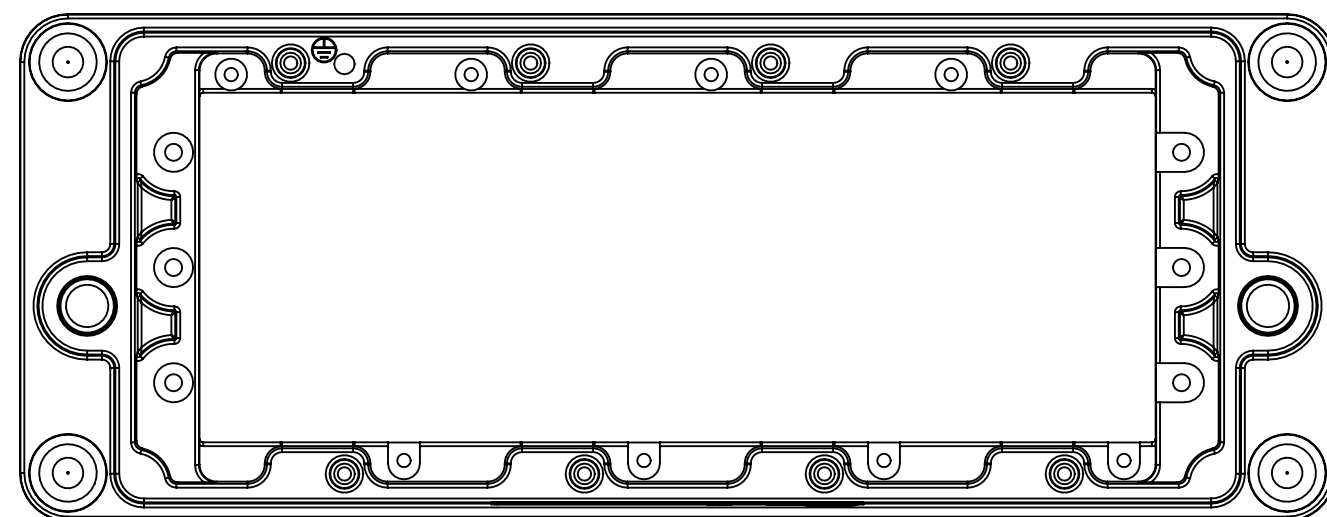
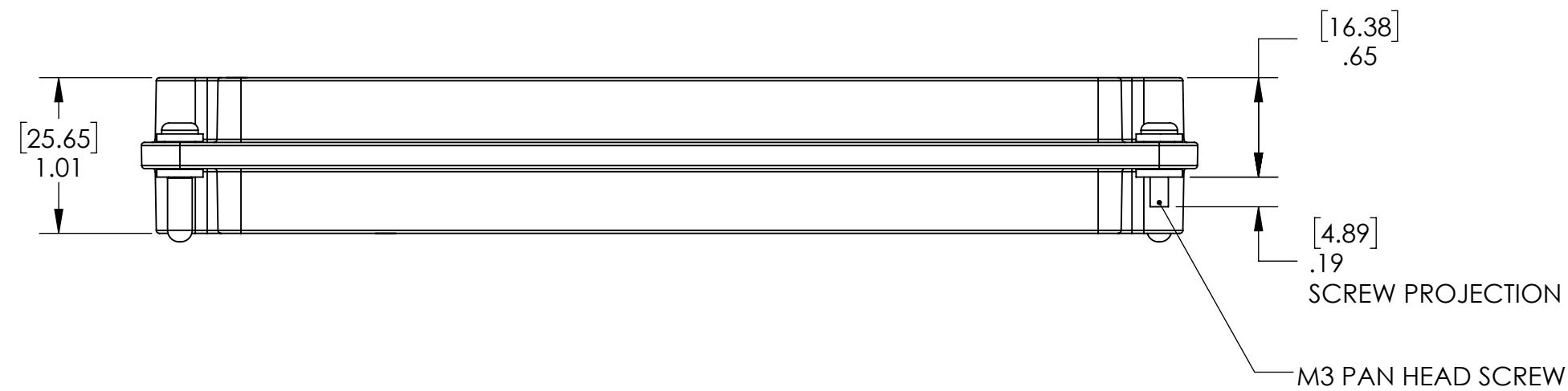
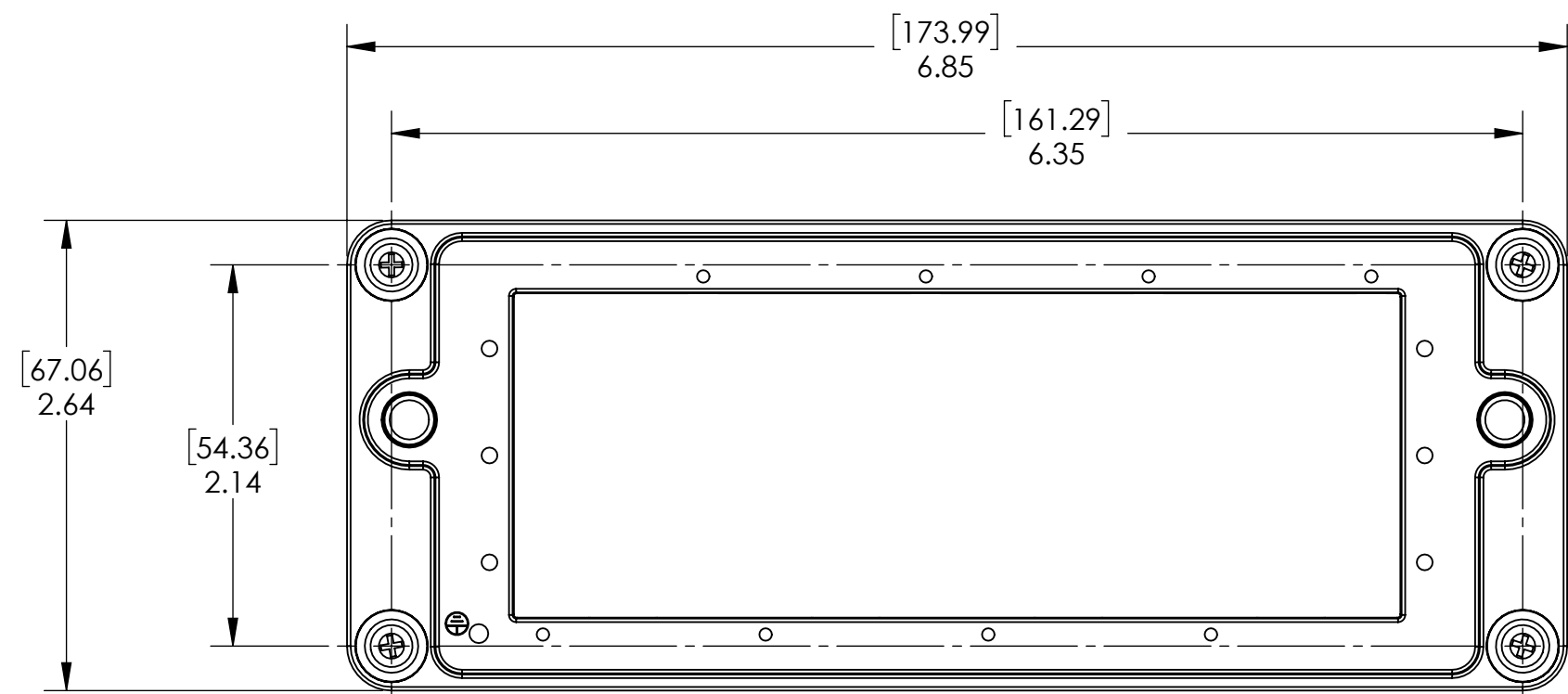
2

1

DO NOT SCALE DRAWING

THE INFORMATION CONTAINED HEREIN IS THE EXCLUSIVE PROPERTY OF VIRGINIA PANEL CORPORATION AND IS SUBMITTED FOR USE BY THE CUSTOMER ONLY. THE DATA SHALL NOT BE DUPLICATED, USED, OR DISCLOSED IN WHOLE OR IN PART FOR ANY PURPOSE OTHER THAN TO MAINTAIN THE EQUIPMENT PROVIDED. CONSULT WITH VIRGINIA PANEL CORPORATION ENGINEERING IF MORE DETAIL IS REQUIRED.

REVISIONS			
REV	DESCRIPTION	DATE	ENGR
B	ECN #8971	3/20/19	R HERRON



3. ACCEPTABLE TEMPERATURE RANGE: -40° TO 80° C

2. MATERIALS:
FRAME - ALUMINUM, NICKEL PLATED
BUSHINGS - NYLON AND STAINLESS STEEL, PASSIVATED
HARDWARE - STAINLESS STEEL, PASSIVATED

1. FOR APPLICATION USE & CARE INFORMATION CONSULT VPC USERS GUIDE @WWW.VPC.COM

NOTES:

RELATIVE CONNECTOR POSITIONS AND WIRE ROUTING ARE GENERIC AND MAY VARY WITH PINOUT
DIMENSIONS ARE SHOWN AS:
[MILLIMETERS]
INCHES

CUSTOMER DRAWING			
VIRGINIA PANEL CORPORATION WWW.VPC.COM			
DOCKING CONNECTOR D3-D4 RCV			
SIZE C	CAGE CODE 18117	DWG. NO. 310131101	REV B
SCALE: 1:1	310131101	7/12/17	SHEET 1 OF 2

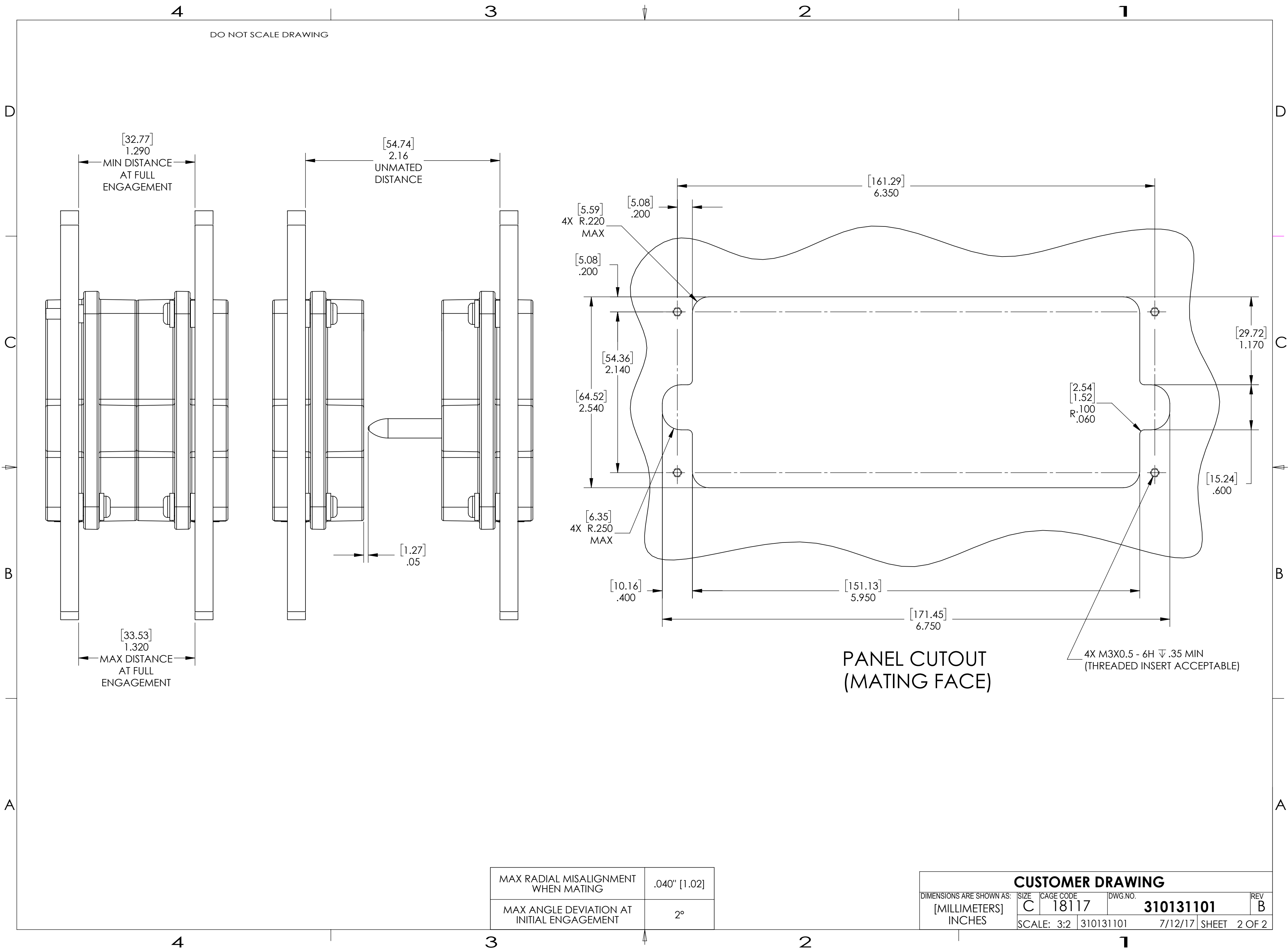
4

3

2

1

DO NOT SCALE DRAWING



MAX RADIAL MISALIGNMENT WHEN MATING	.040" [1.02]
MAX ANGLE DEVIATION AT INITIAL ENGAGEMENT	2°

CUSTOMER DRAWING				
DIMENSIONS ARE SHOWN AS:	SIZE	CAGE CODE	DWG. NO.	REV
[MILLIMETERS]	C	18117	310131101	B
INCHES	SCALE: 3:2	310131101	7/12/17	SHEET 2 OF 2