

4

3

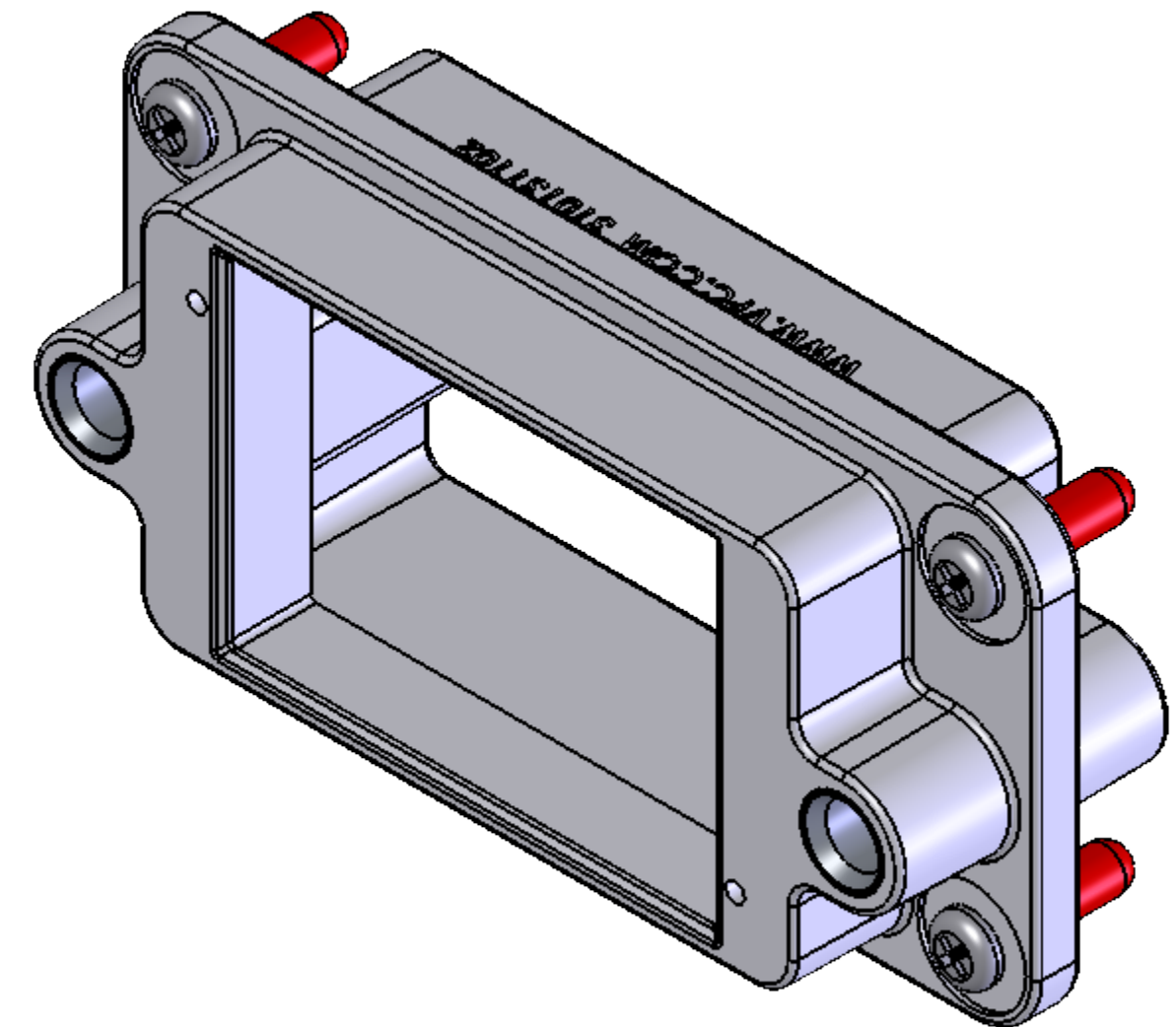
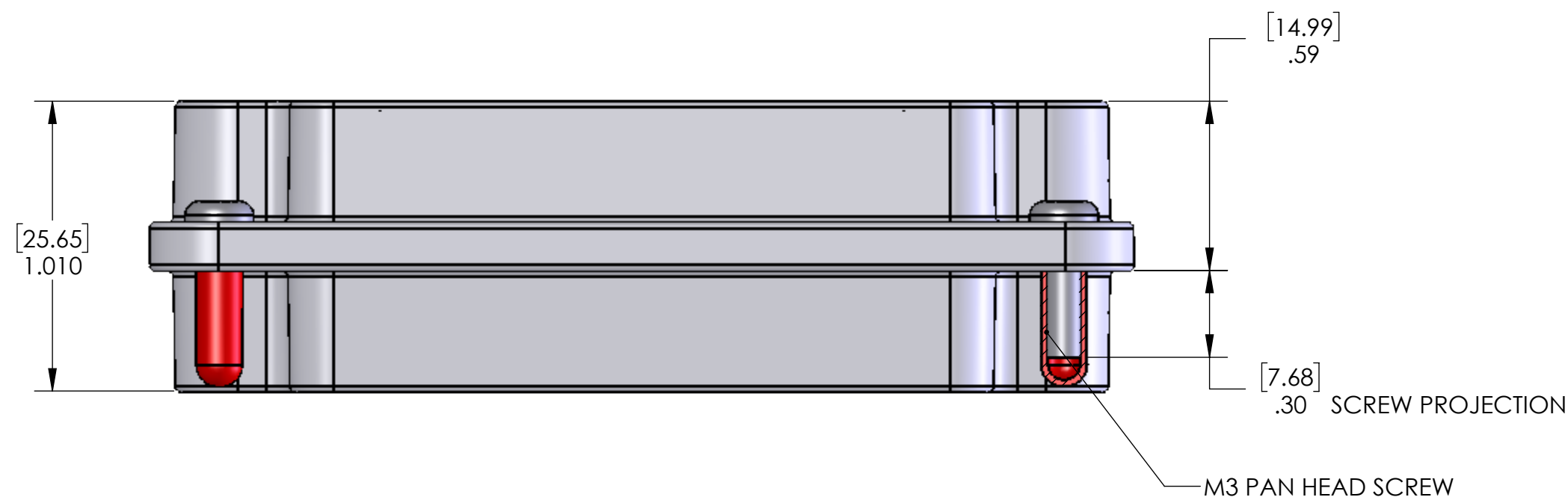
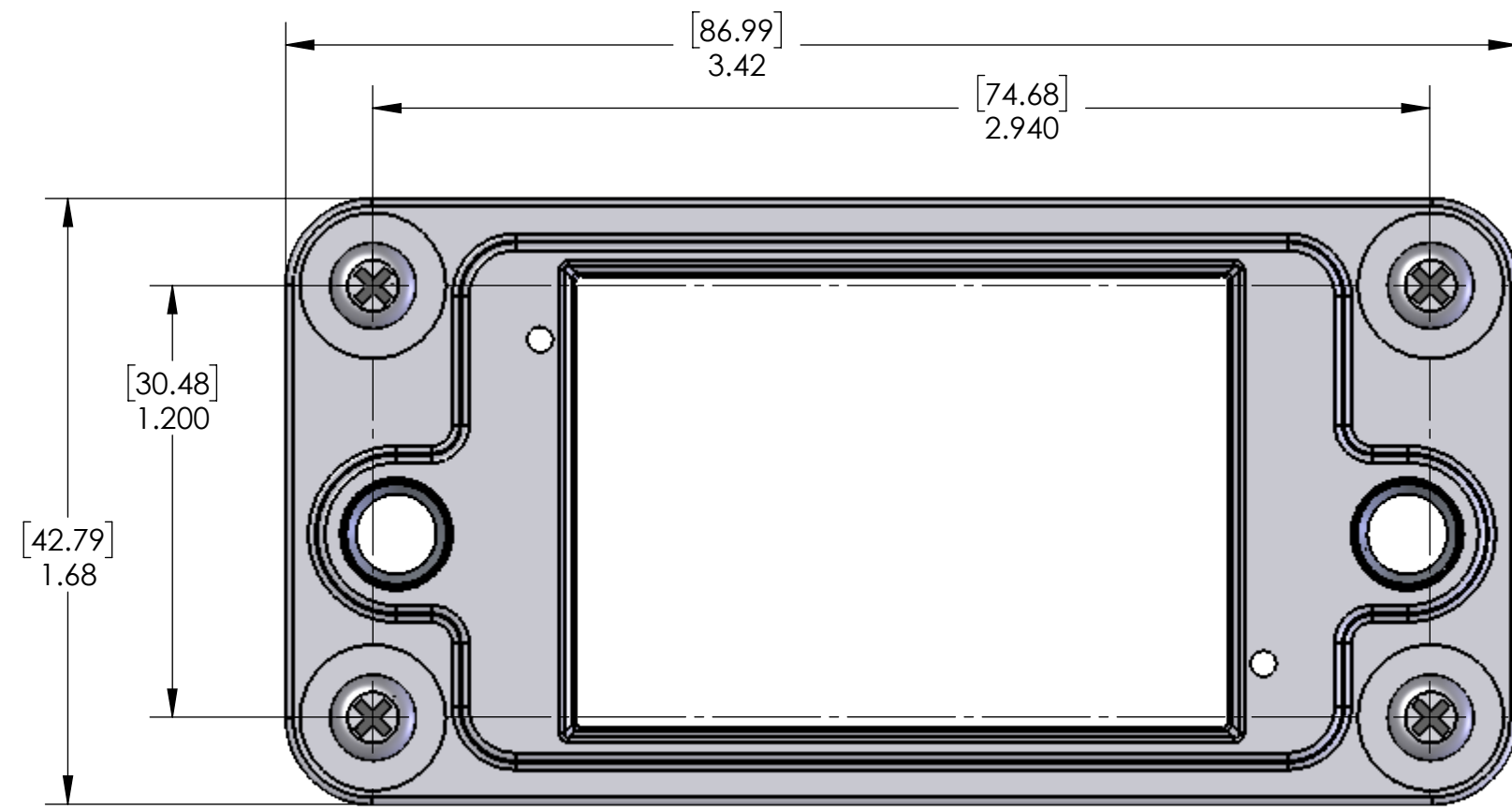
2

1

DO NOT SCALE DRAWING

THE INFORMATION CONTAINED HEREIN IS THE EXCLUSIVE PROPERTY OF VIRGINIA PANEL CORPORATION AND IS SUBMITTED FOR USE BY THE CUSTOMER ONLY. THE DATA SHALL NOT BE DUPLICATED, USED, OR DISCLOSED IN WHOLE OR IN PART FOR ANY PURPOSE OTHER THAN TO MAINTAIN THE EQUIPMENT PROVIDED. CONSULT WITH VIRGINIA PANEL CORPORATION ENGINEERING IF MORE DETAIL IS REQUIRED.

REVISIONS			
REV	DESCRIPTION	DATE	ENGR
A	DRAWING ORIENTATION - ECN #8603	10/8/2018	R GARMAN



- NOTES:
- 3. ACCEPTABLE TEMPERATURE RANGE -40° TO 80° C.
 - 2. FRAME MATERIAL - ALUMINUM, NICKEL PLATED
BUSHING MATERIAL - STAINLESS STEEL, PASSIVATED
HARDWARE - STAINLESS STEEL, PASSIVATED
 - 1. FOR APPLICATION USE & CARE INFORMATION CONSULT VPC USERS GUIDE @WWW.VPC.COM

CUSTOMER DRAWING			
VIRGINIA PANEL CORPORATION WWW.VPC.COM			
D1 RCV DOCKING CONN			
RELATIVE CONNECTOR POSITIONS AND WIRE ROUTING ARE GENERIC AND MAY VARY WITH PINOUT	DIMENSIONS ARE SHOWN AS:	SIZE	CAGE CODE
	[MILLIMETERS] INCHES	C	18117
		DWG. NO.	REV
		310131102	A
SCALE: 2:1	310131102	7/6/2017	SHEET 1 OF 2

4

3

2

1

4

3

2

1

DO NOT SCALE DRAWING

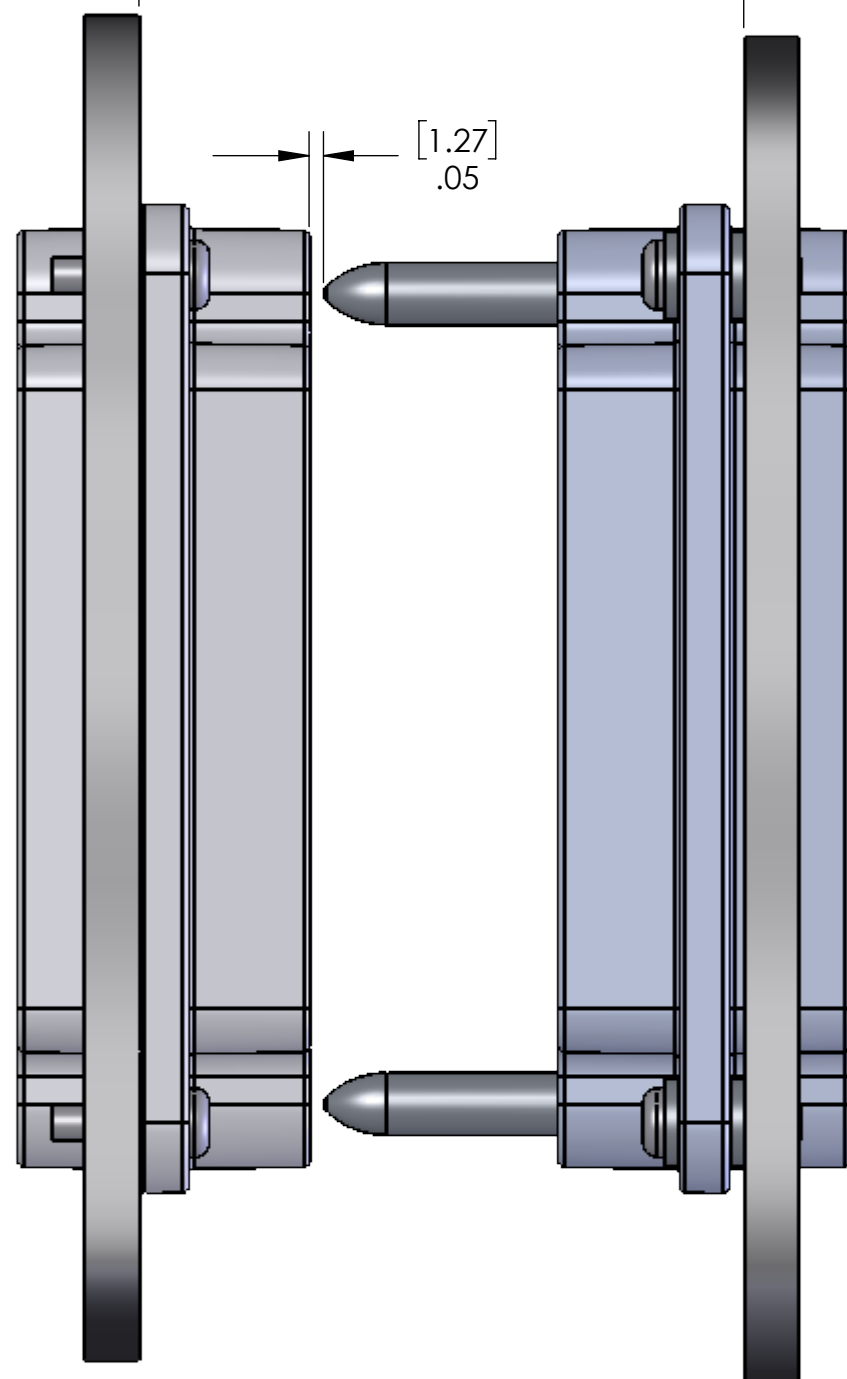
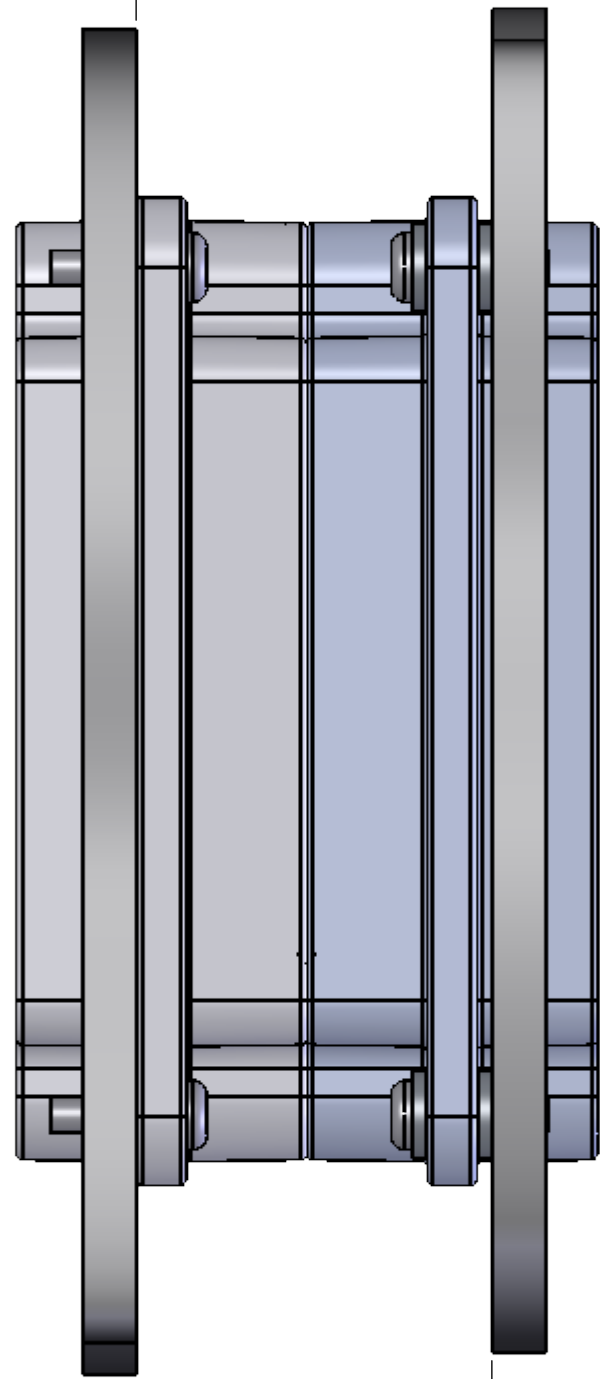
D

D

[31.37]
1.235
MIN DISTANCE
AT FULL
ENGAGEMENT

[53.34]
2.10
UNMATED
DISTANCE

[1.27]
.05



[32.13]
1.265
MAX DISTANCE
AT FULL
ENGAGEMENT

C

C

B

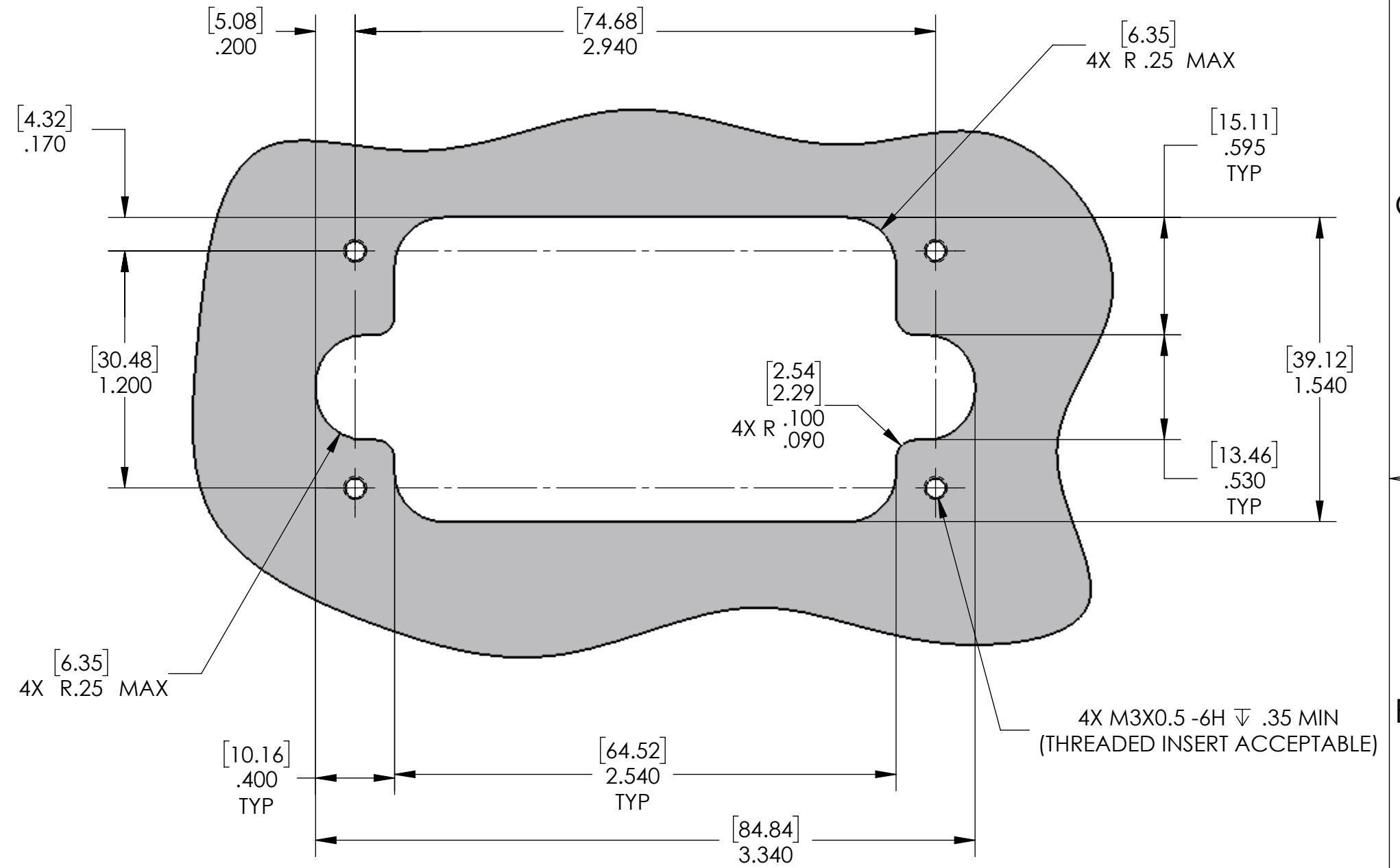
B

B

B

A

A



PANEL CUTOUT
(MATING FACE)

MAX RADIAL MISALIGNMENT WHEN MATING	.020" [.51]
MAX ANGLE DEVIATION AT INITIAL ENGAGEMENT	2°

CUSTOMER DRAWING				
DIMENSIONS ARE SHOWN AS:	SIZE	CAGE CODE	DWG. NO.	REV
[MILLIMETERS]	C	18117	310131102	A
INCHES	SCALE: 3:2	310131102	SHEET 2 OF 2	

4

3

2

1