

4

3

2

1

DO NOT SCALE DRAWING

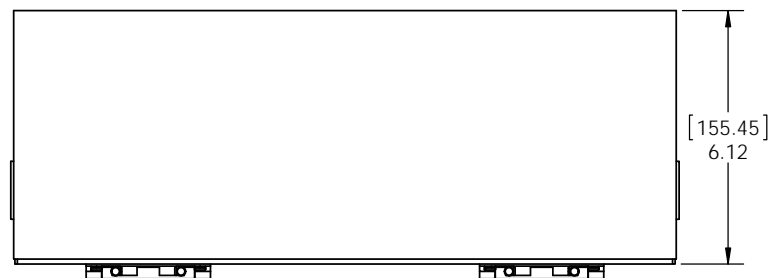
THE INFORMATION CONTAINED HEREIN IS THE EXCLUSIVE PROPERTY OF VIRGINIA PANEL CORPORATION AND IS SUBMITTED FOR USE BY THE CUSTOMER ONLY. THE DATA SHALL NOT BE DUPLICATED, USED, OR DISCLOSED IN WHOLE OR IN PART FOR ANY PURPOSE OTHER THAN TO MAINTAIN THE EQUIPMENT PROVIDED. CONSULT WITH VIRGINIA PANEL CORPORATION ENGINEERING IF MORE DETAIL IS REQUIRED.

REVISIONS

REV	DESCRIPTION	DATE	ENGR
D	ECN #5519	9/25/14	RF

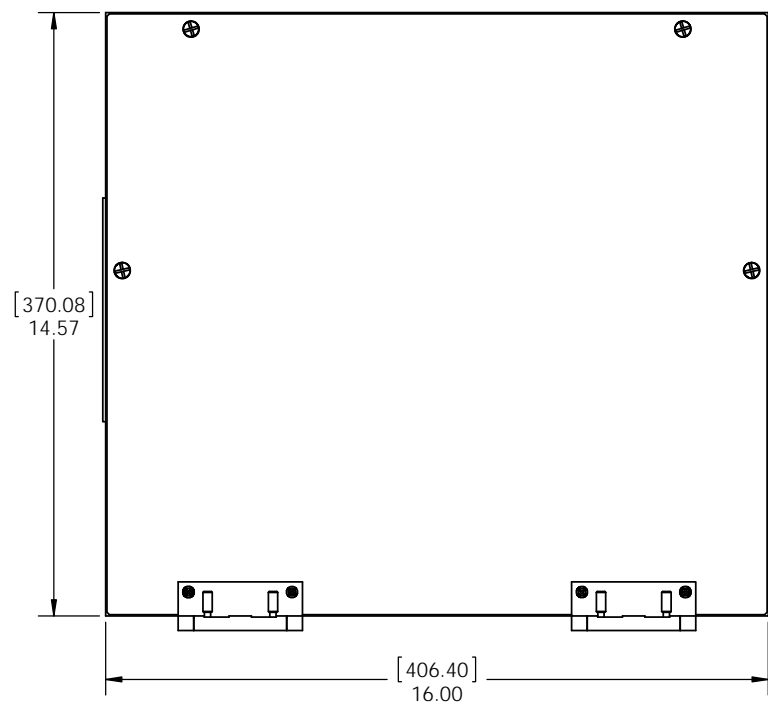
D

D



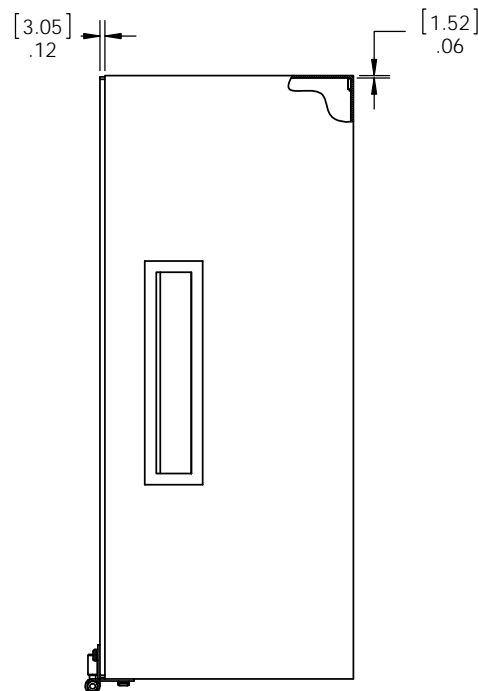
C

C



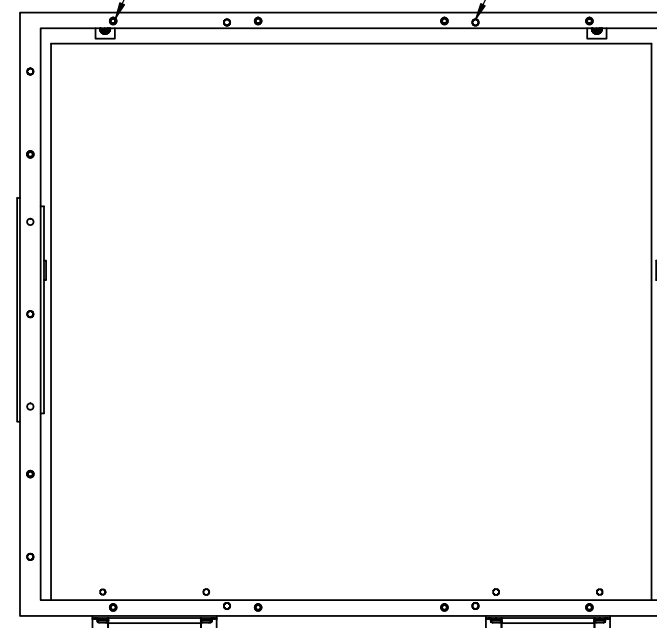
B

B



4-40 PEM NUT
TYP. 12 PLCS FOR
FRONT MOUNT ITAS
USE 4-40 X 1.00"
SCREWS PROVIDED

Ø.16 THRU
TYP. 14 PLCS. FOR
REAR MOUNT ITAS
USE 6-32 X .38
SCREWS PROVIDED



A

A

2. HOUSING:
MATERIAL = .06" [1.52] ALUMINUM
FINISH = PAINTED
COVER:
MATERIAL = .12" [3.05] ALUMINUM
FINISH = BLACK ANODIZED

1. FOR APPLICATION USE & CARE INFORMATION CONSULT VPC USERS GUIDE @WWW.VPC.COM
NOTES:

410112463

CUSTOMER DRAWING

VIRGINIA PANEL CORPORATION
WWW.VPC.COM

ENCL 50 MOD 6"

RELATIVE CONNECTOR POSITIONS
AND WIRE ROUTING ARE GENERIC
AND MAY VARY WITH PENCIL
DIMENSIONS ARE SHOWN AS:
[MILLIMETERS]
INCHES

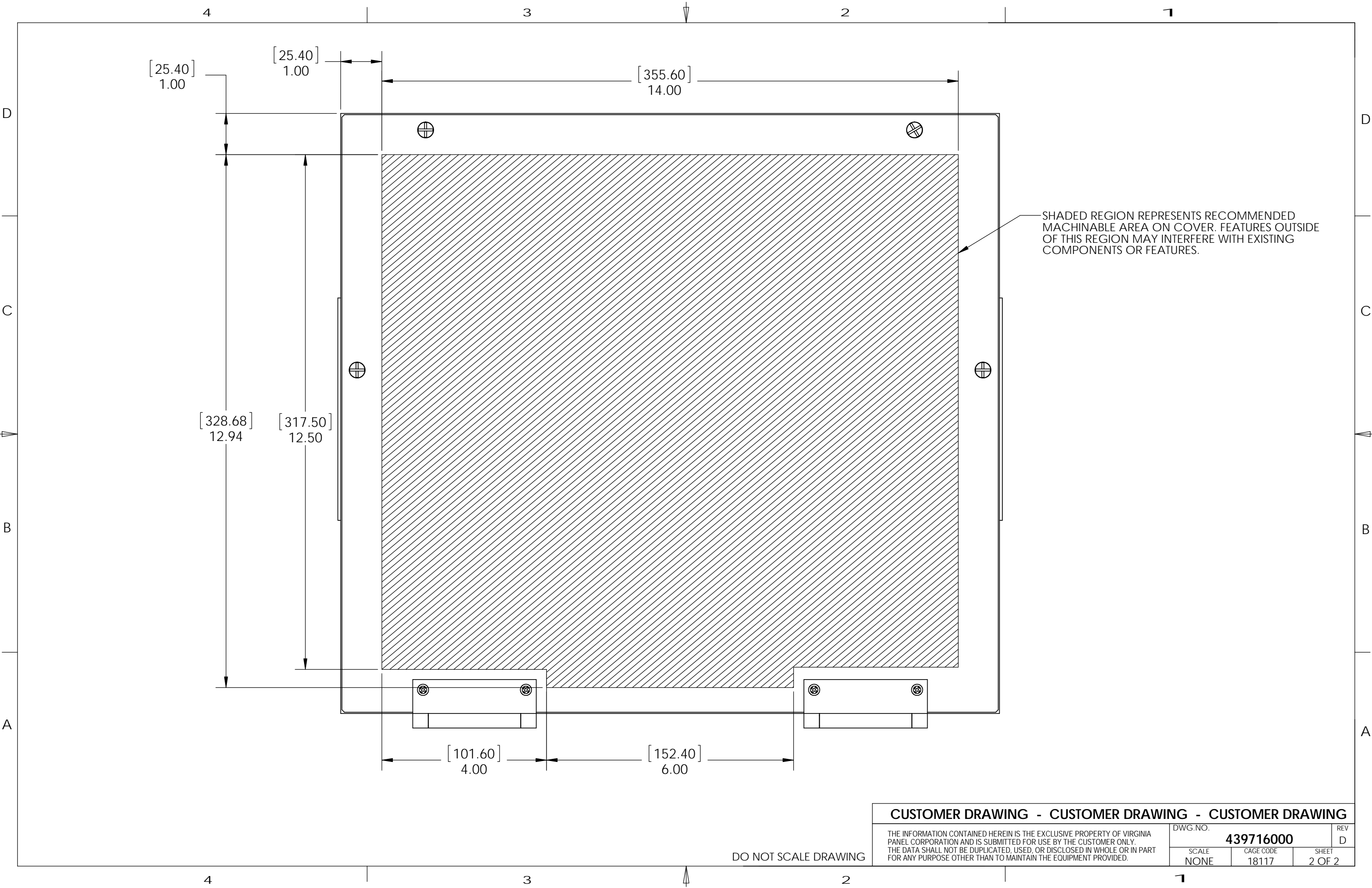
SIZE	CAGE CODE	DWG. NO.	REV
C	18117	439716000	D
SCALE: 1:3		410112463	5/31/2011
SHEET		1 OF 2	

4

3

2

1



SHADED REGION REPRESENTS RECOMMENDED MACHINABLE AREA ON COVER. FEATURES OUTSIDE OF THIS REGION MAY INTERFERE WITH EXISTING COMPONENTS OR FEATURES.

CUSTOMER DRAWING - CUSTOMER DRAWING - CUSTOMER DRAWING			
THE INFORMATION CONTAINED HEREIN IS THE EXCLUSIVE PROPERTY OF VIRGINIA PANEL CORPORATION AND IS SUBMITTED FOR USE BY THE CUSTOMER ONLY. THE DATA SHALL NOT BE DUPLICATED, USED, OR DISCLOSED IN WHOLE OR IN PART FOR ANY PURPOSE OTHER THAN TO MAINTAIN THE EQUIPMENT PROVIDED.			DWG.NO. 439716000
SCALE NONE	CAGE CODE 18117	SHEET 2 OF 2	REV D

DO NOT SCALE DRAWING