

4

3

2

1

DO NOT SCALE DRAWING

THE INFORMATION CONTAINED HEREIN IS THE EXCLUSIVE PROPERTY OF VIRGINIA PANEL CORPORATION AND IS SUBMITTED FOR USE BY THE CUSTOMER ONLY. THE DATA SHALL NOT BE DUPLICATED, USED, OR DISCLOSED IN WHOLE OR IN PART FOR ANY PURPOSE OTHER THAN TO MAINTAIN THE EQUIPMENT PROVIDED. CONSULT WITH VIRGINIA PANEL CORPORATION ENGINEERING IF MORE DETAIL IS REQUIRED.

REVISIONS			
REV	DESCRIPTION	DATE	ENGR
H	ECN #12463	4/5/22	J Siler

D

D

C

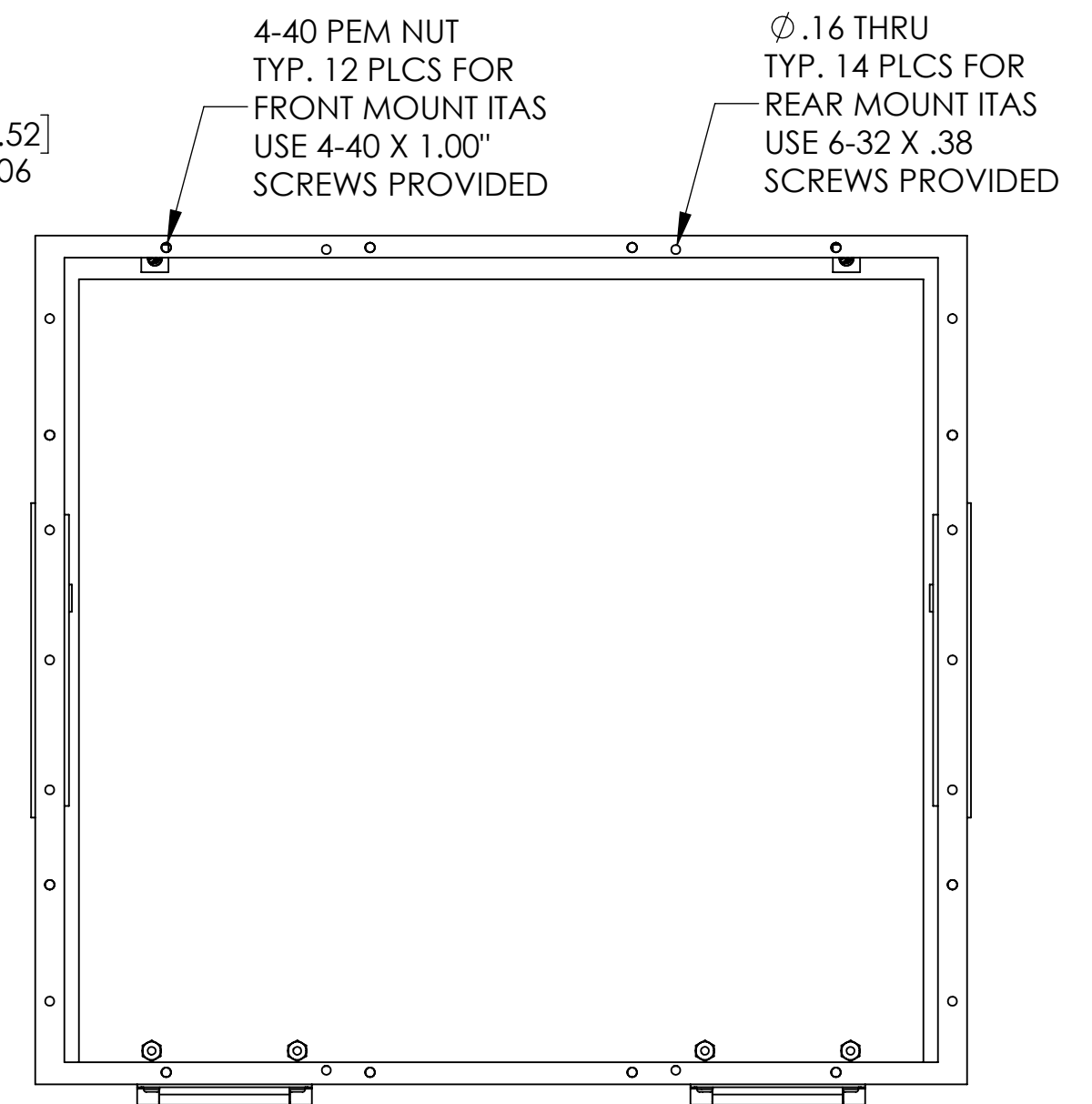
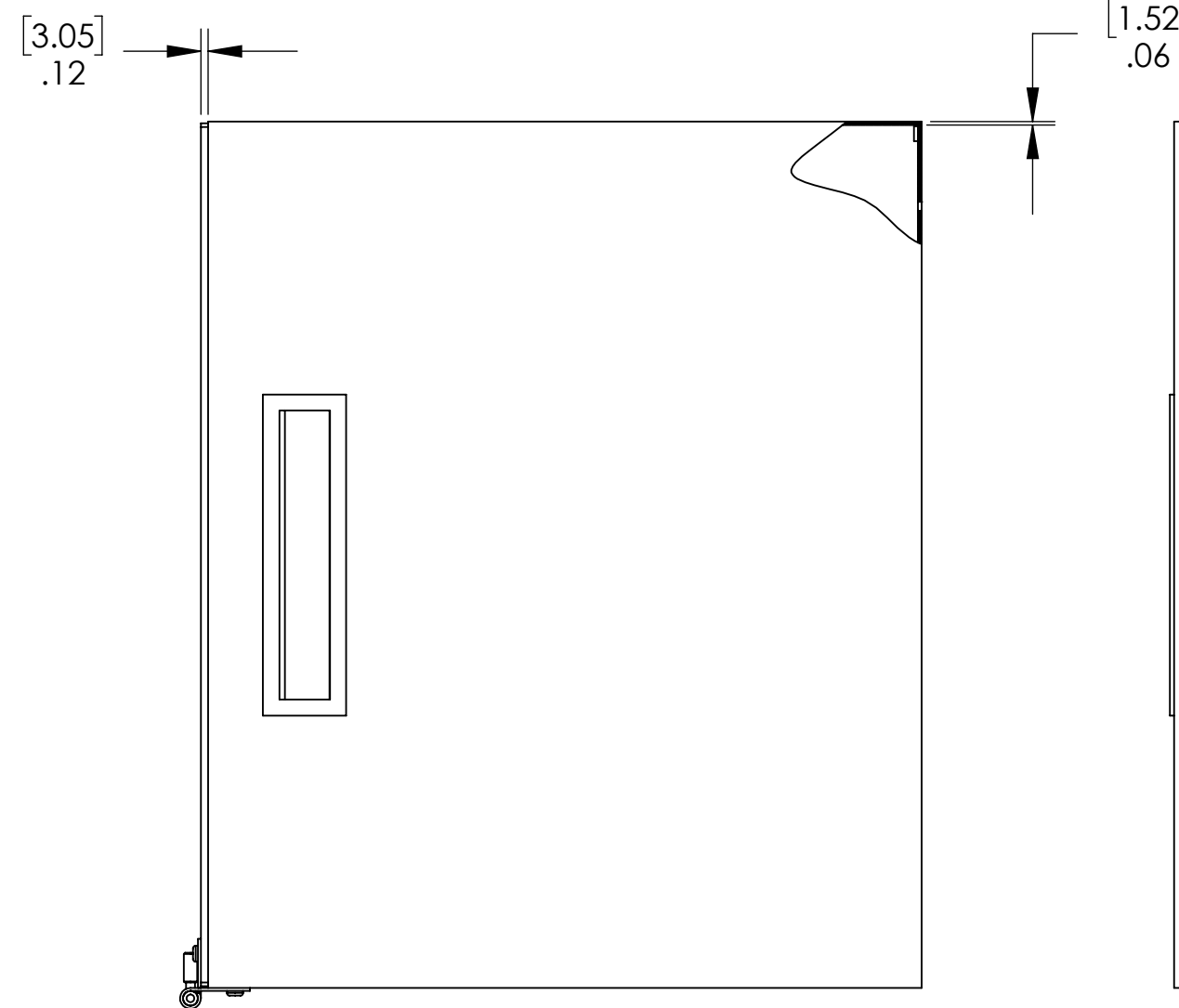
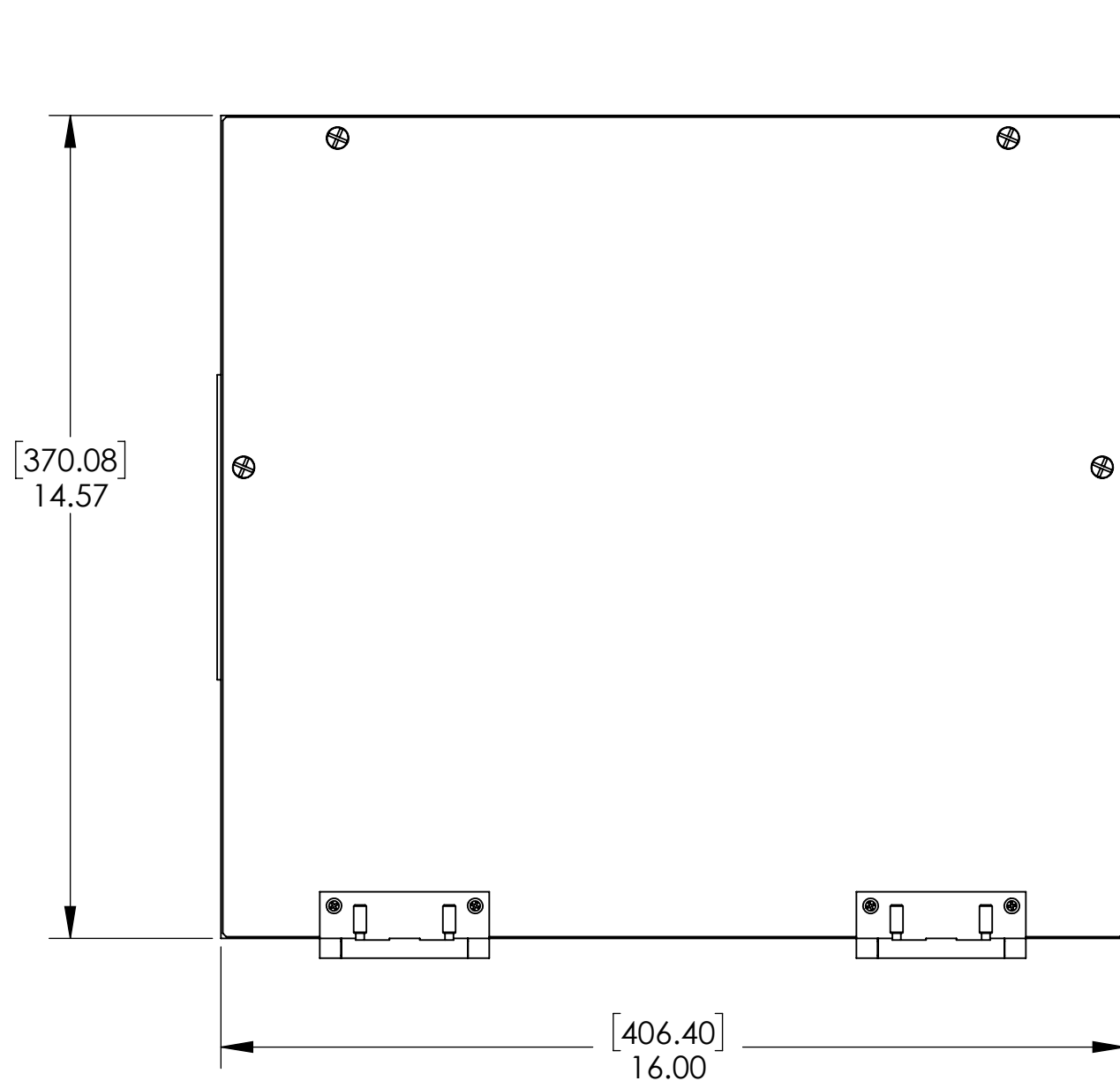
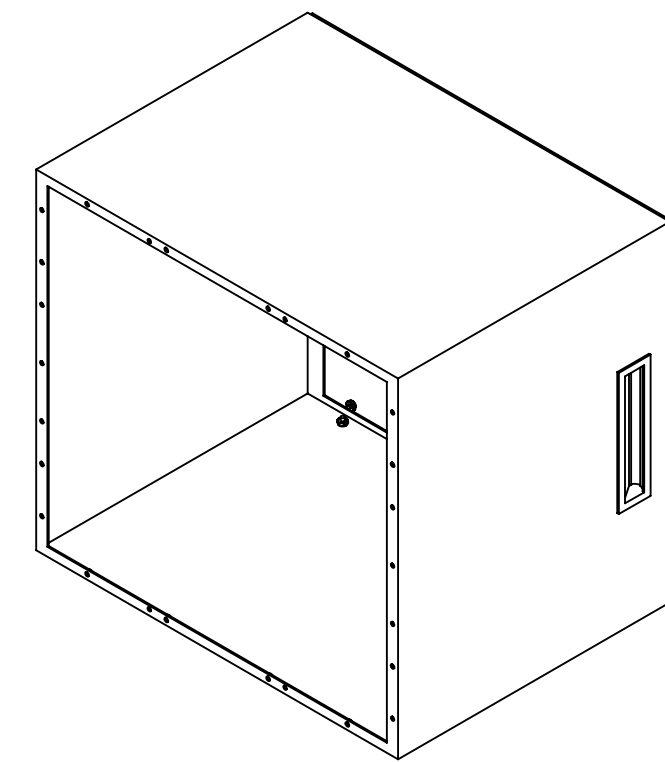
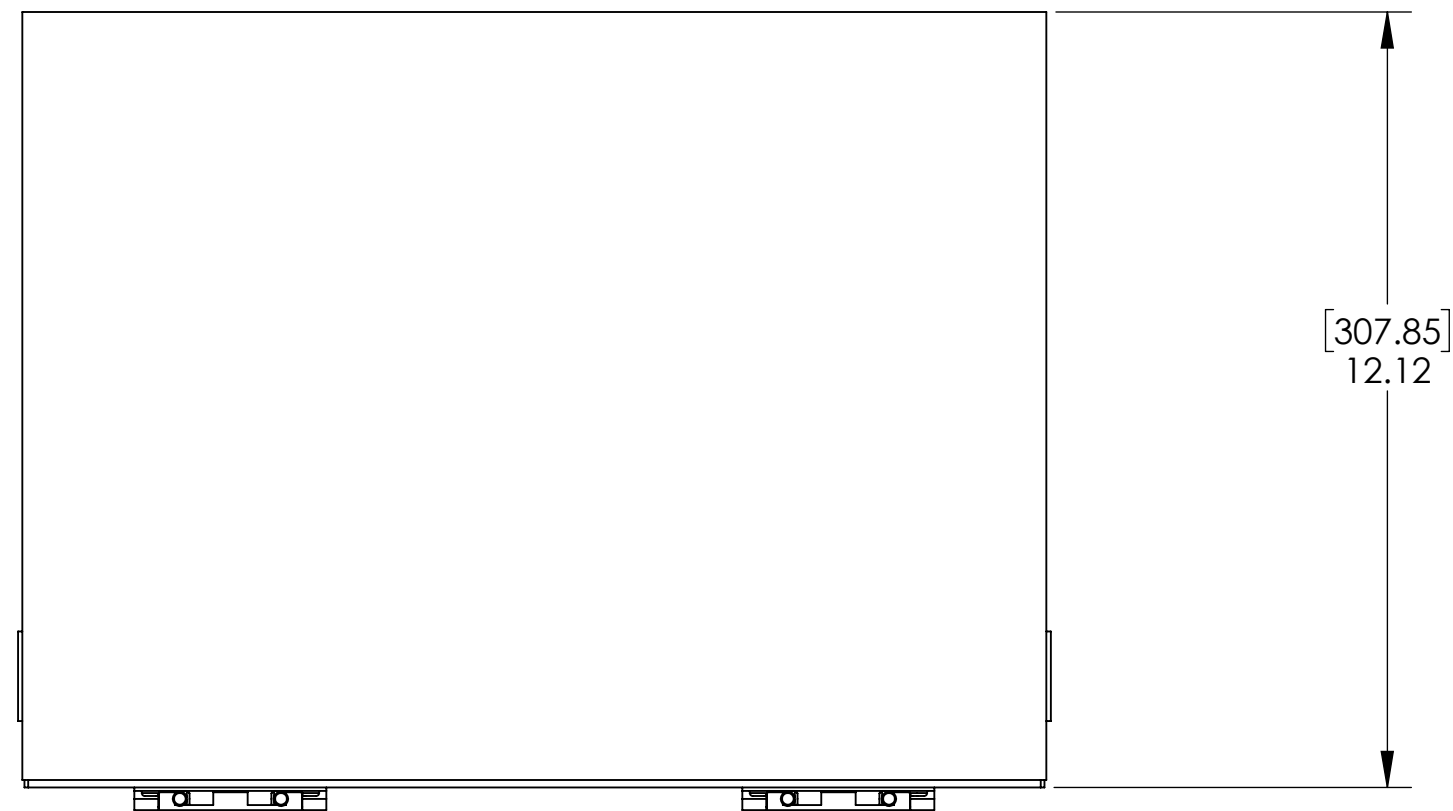
C

B

B

A

A



4-40 PEM NUT
TYP. 12 PLCS FOR
FRONT MOUNT ITAS
USE 4-40 X 1.00"
SCREWS PROVIDED

Ø .16 THRU
TYP. 14 PLCS FOR
REAR MOUNT ITAS
USE 6-32 X .38
SCREWS PROVIDED

2. HOUSING
MATERIAL = .06"[1.52] ALUMINUM
FINISH = PAINTED
COVER
MATERIAL = .12"[3.05] ALUMINUM
FINISH = BLACK ANODIZED

1. FOR APPLICATION USE & CARE INFORMATION CONSULT VPC USERS GUIDE @WWW.VPC.COM
NOTES:

410112519

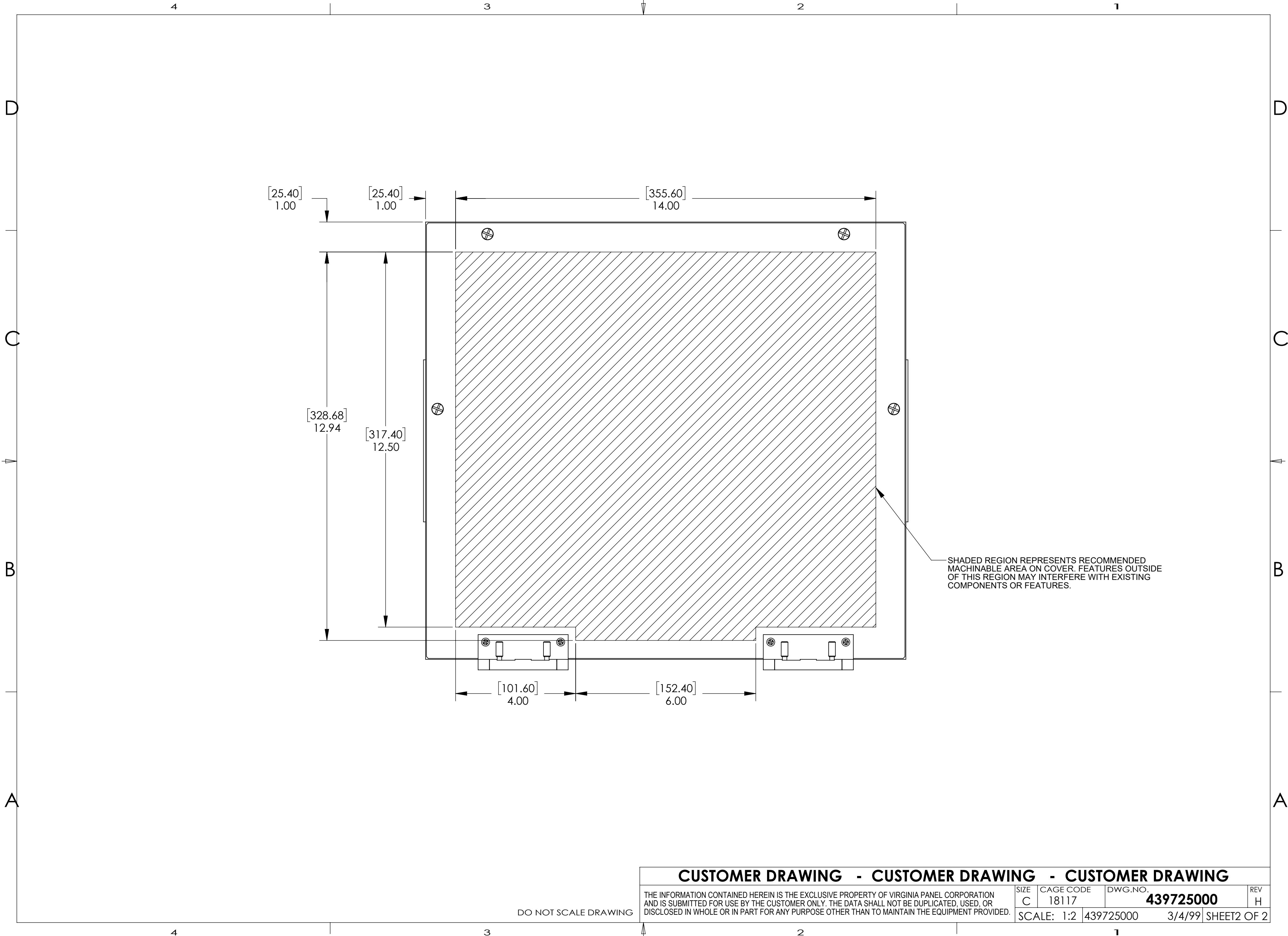
CUSTOMER DRAWING			
VIRGINIA PANEL CORPORATION WWW.VPC.COM			
ENCLOSURE ASSEMBLY, 9050 VXI			
RELATIVE CONNECTOR POSITIONS AND WIRE ROUTING ARE GENERIC AND MAY VARY WITH PAYOUT	DIMENSIONS ARE SHOWN AS: [MILLIMETERS] INCHES	SIZE C 18117	CAGE CODE 439725000
		DWG. NO. 439725000	REV H
		SCALE: 1:3	3/4/99 SHEET 1 OF 2

4

3

2

1



CUSTOMER DRAWING - CUSTOMER DRAWING - CUSTOMER DRAWING

THE INFORMATION CONTAINED HEREIN IS THE EXCLUSIVE PROPERTY OF VIRGINIA PANEL CORPORATION AND IS SUBMITTED FOR USE BY THE CUSTOMER ONLY. THE DATA SHALL NOT BE DUPLICATED, USED, OR DISCLOSED IN WHOLE OR IN PART FOR ANY PURPOSE OTHER THAN TO MAINTAIN THE EQUIPMENT PROVIDED.

SIZE	CAGE CODE	DWG.NO.	REV
C	18117	439725000	H
SCALE: 1:2		439725000	3/4/99 SHEET2 OF 2

DO NOT SCALE DRAWING