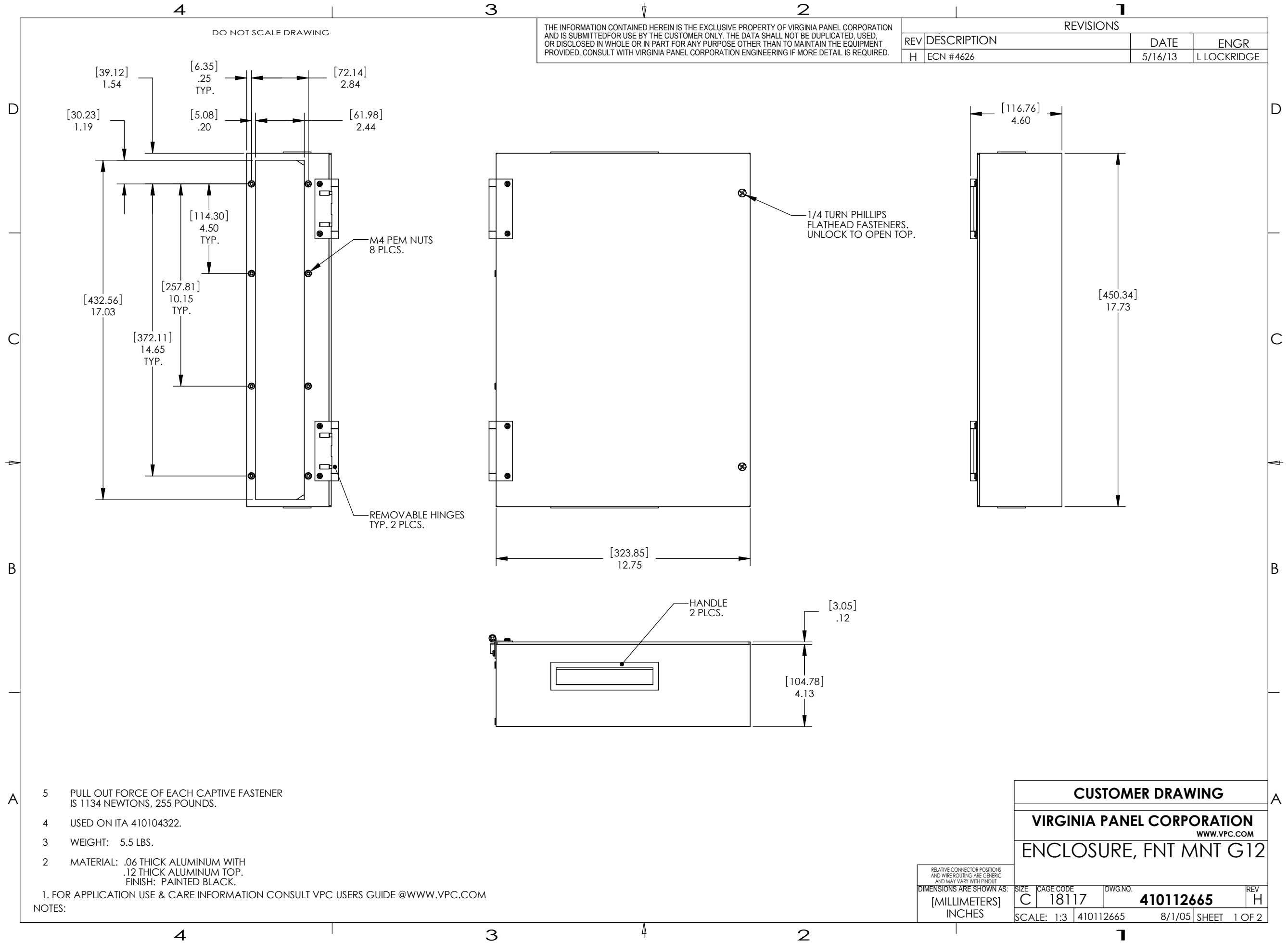


THE INFORMATION CONTAINED HEREIN IS THE EXCLUSIVE PROPERTY OF VIRGINIA PANEL CORPORATION AND IS SUBMITTED FOR USE BY THE CUSTOMER ONLY. THE DATA SHALL NOT BE DUPLICATED, USED, OR DISCLOSED IN WHOLE OR IN PART FOR ANY PURPOSE OTHER THAN TO MAINTAIN THE EQUIPMENT PROVIDED. CONSULT WITH VIRGINIA PANEL CORPORATION ENGINEERING IF MORE DETAIL IS REQUIRED.

REVISIONS			
REV	DESCRIPTION	DATE	ENGR
H	ECN #4626	5/16/13	L LOCKRIDGE

DO NOT SCALE DRAWING

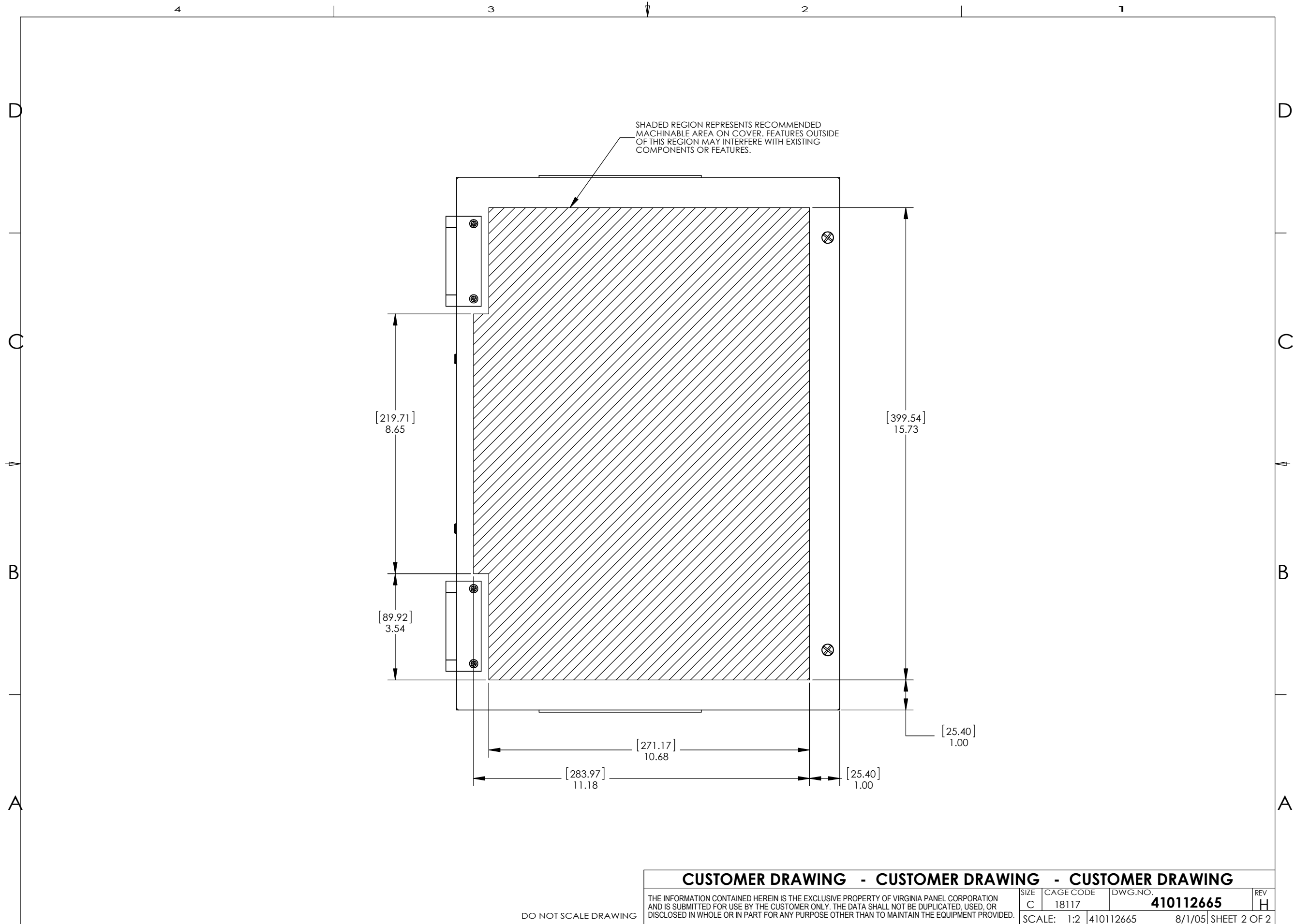


- 5 PULL OUT FORCE OF EACH CAPTIVE FASTENER IS 1134 NEWTONS, 255 POUNDS.
- 4 USED ON ITA 410104322.
- 3 WEIGHT: 5.5 LBS.
- 2 MATERIAL: .06 THICK ALUMINUM WITH .12 THICK ALUMINUM TOP. FINISH: PAINTED BLACK.
1. FOR APPLICATION USE & CARE INFORMATION CONSULT VPC USERS GUIDE @WWW.VPC.COM
- NOTES:

<b>CUSTOMER DRAWING</b>			
<b>VIRGINIA PANEL CORPORATION</b> WWW.VPC.COM			
<b>ENCLOSURE, FNT MNT G12</b>			
SIZE	CAGE CODE	DWG. NO.	REV
C	18117	<b>410112665</b>	H
SCALE: 1:3		410112665	8/1/05 SHEET 1 OF 2

RELATIVE CONNECTOR POSITIONS AND WIRE ROUTING ARE GENERIC AND MAY VARY WITH PRODUCT

DIMENSIONS ARE SHOWN AS:  
[MILLIMETERS]  
INCHES



**CUSTOMER DRAWING - CUSTOMER DRAWING - CUSTOMER DRAWING**

THE INFORMATION CONTAINED HEREIN IS THE EXCLUSIVE PROPERTY OF VIRGINIA PANEL CORPORATION AND IS SUBMITTED FOR USE BY THE CUSTOMER ONLY. THE DATA SHALL NOT BE DUPLICATED, USED, OR DISCLOSED IN WHOLE OR IN PART FOR ANY PURPOSE OTHER THAN TO MAINTAIN THE EQUIPMENT PROVIDED.

SIZE	CAGE CODE	DWG.NO.	REV
C	18117	<b>410112665</b>	H
SCALE:	1:2	410112665	8/1/05 SHEET 2 OF 2

DO NOT SCALE DRAWING