

4

3

2

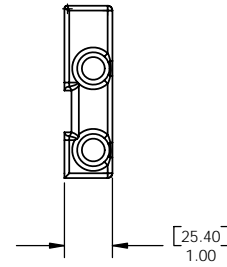
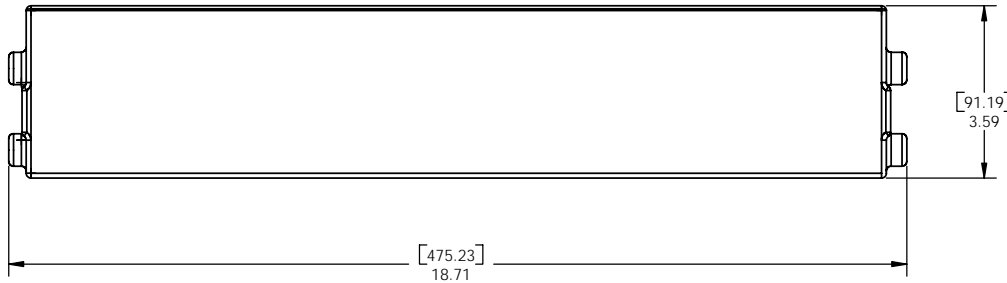
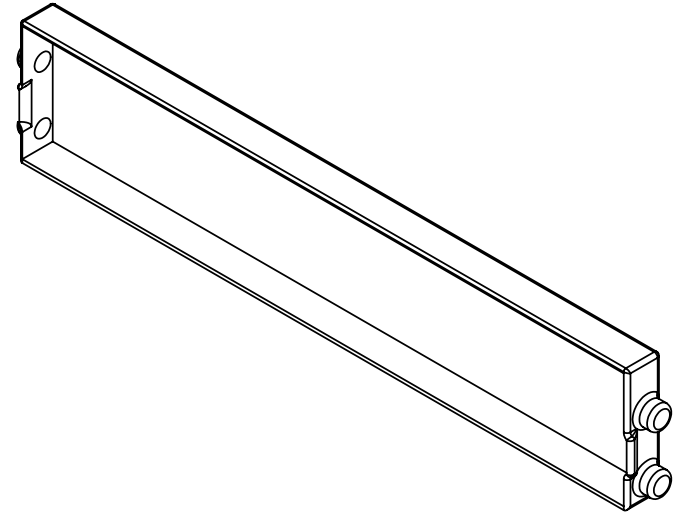
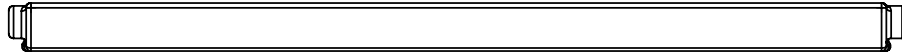
1

DO NOT SCALE DRAWING

THE INFORMATION CONTAINED HEREIN IS THE EXCLUSIVE PROPERTY OF VIRGINIA PANEL CORP. AND IS SUBMITTED FOR USE BY THE CUSTOMER ONLY. THE DATA SHALL NOT BE DUPLICATED, USED, OR DISCLOSED IN WHOLE OR IN PART FOR ANY PURPOSE OTHER THAN TO MAINTAIN THE EQUIPMENT PROVIDED. CONSULT WITH VIRGINIA PANEL CORPORATION ENGINEERING IF MORE DETAIL IS REQUIRED.

REVISIONS

ZONE	REV	DESCRIPTION	DATE	APPROVED
	C	EC# 06-410-0072	12/4/06	RD



2 THIS PROTECTIVE COVERS FITS G12 ITA PART NUMBERS: 410104300, 410104322

1 FOR APPLICATION, USE & CARE INFORMATION CONSULT VPC USERS GUIDE @WWW.VPC.COM

NOTES:

CUSTOMER DRAWING - CUSTOMER DRAWING

SOLIDWORKS DRAWING FILE	DIMENSIONS ARE SHOWN AS:		SIGNATURES		DATE	VIRGINIA PANEL CORPORATION WWW.VPC.COM		
	[millimeters] INCHES		DR	E. HUBBARD	3/1/05			
	REMOVE BURRS - BREAK SHARP EDGES		CHK			PROTECTIVE COVER, ITA, G12		
	MATERIAL		ENG					
ELECTRICAL GRADE PVC		PROD			SIZE	CAGE CODE	DWG.NO.	REV
FINISH		ASSY			C	18117	410112681	C
BLACK MATTE		O A			SCALE: NONE	3/1/05	410112681	SHEET 1 OF 1
		APPD						

4

3

2

1

D

C

B

A

D

C

B

A