

4

3

2

1

DO NOT SCALE DRAWING

THE INFORMATION CONTAINED HEREIN IS THE EXCLUSIVE PROPERTY OF VIRGINIA PANEL CORPORATION AND IS SUBMITTED FOR USE BY THE CUSTOMER ONLY. THE DATA SHALL NOT BE DUPLICATED, USED, OR DISCLOSED IN WHOLE OR IN PART FOR ANY PURPOSE OTHER THAN TO MAINTAIN THE EQUIPMENT PROVIDED. CONSULT WITH VIRGINIA PANEL CORPORATION ENGINEERING IF MORE DETAIL IS REQUIRED.

REVISIONS

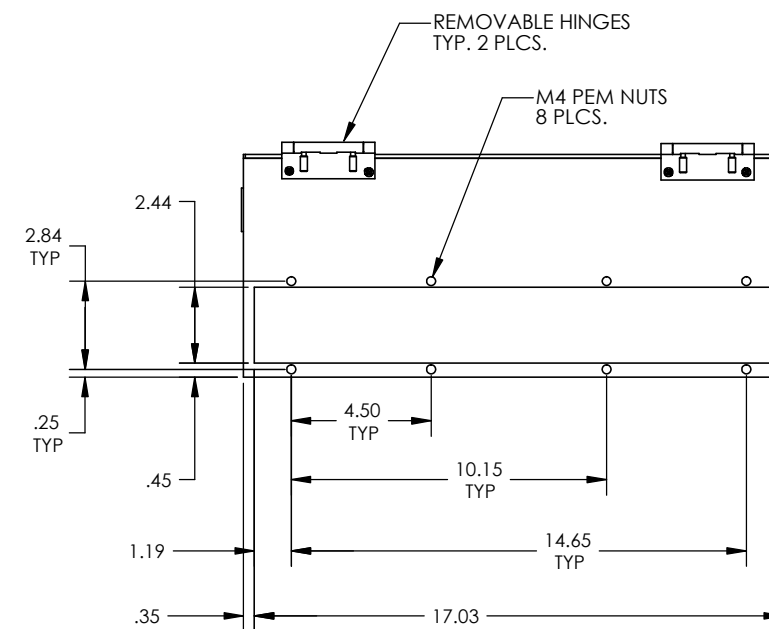
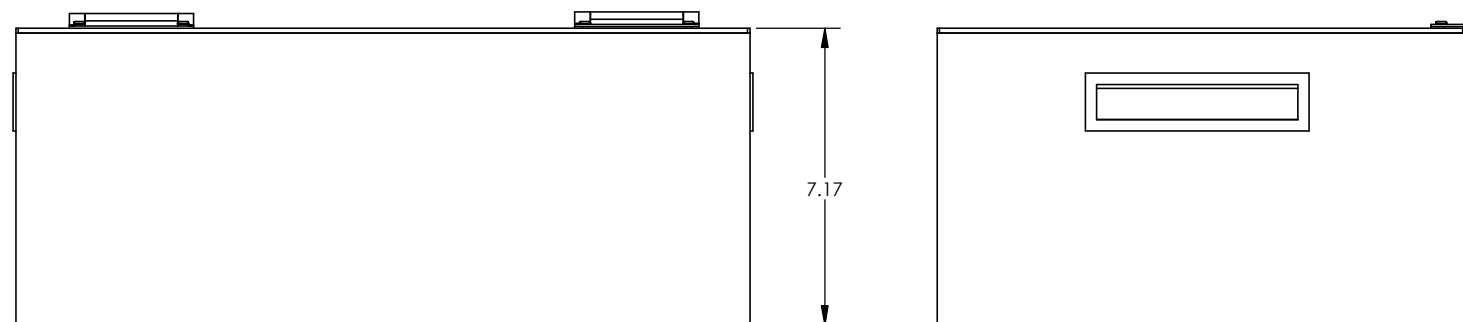
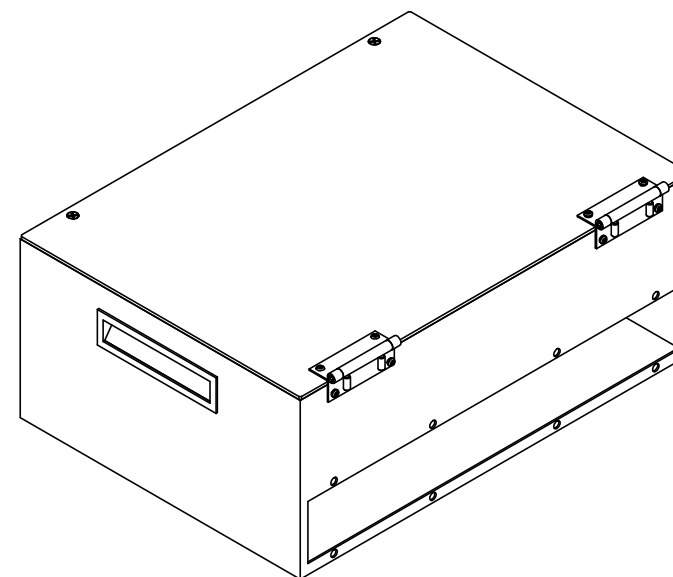
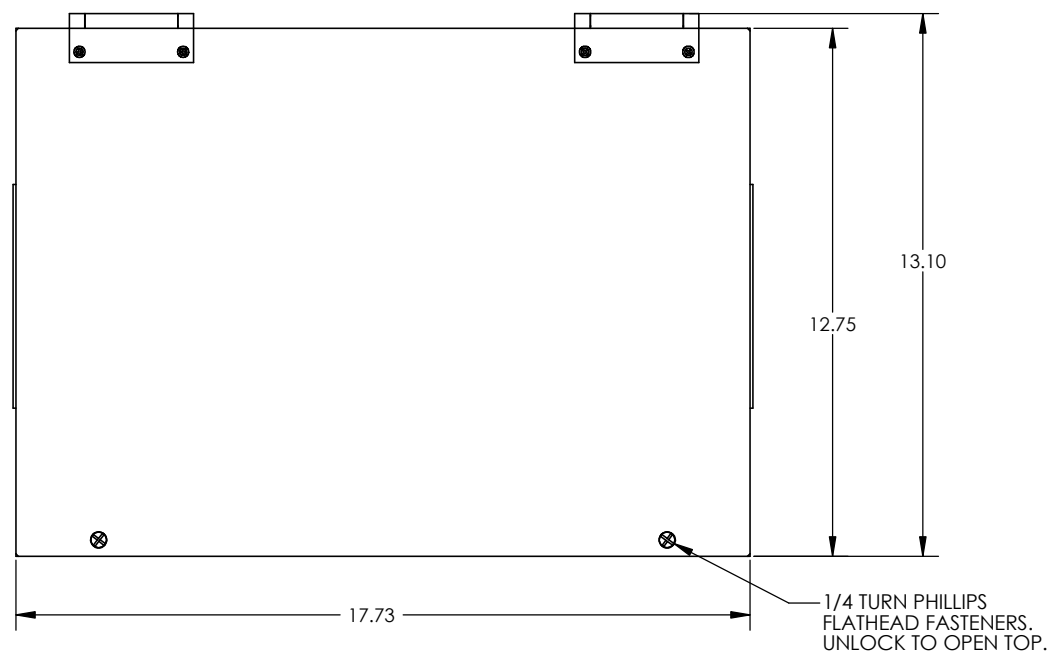
REV	DESCRIPTION	DATE	ENGR
F	ECN #8447	8/1/18	L HARMAN

D

C

B

A



4. PULL OUT FORCE OF EACH CAPTIVE FASTENER IS 1134 NEWTONS, 255 POUNDS.

3. USED ON ITA 410104322.

2. MATERIAL: .06 THICK ALUMINUM WITH .12 THICK ALUMINUM TOP.

FINISH: TEXTURED RAL 9005 09/80160 BLACK POWDERCOAT

1. FOR APPLICATION USE & CARE INFORMATION CONSULT VPC USERS GUIDE @WWW.VPC.COM  
NOTES:

CUSTOMER DRAWING

VIRGINIA PANEL CORPORATION  
WWW.VPC.COM

ENCLOSURE ASSEMBLY, G12  
SPC 7" TALL

DIMENSIONS ARE SHOWN AS:  
[MILLIMETERS]  
INCHES

SIZE	CAGE CODE	DWG. NO.	REV
C	18117	410112757	F
SCALE: 1:4		410112757	5/22/07
		SHEET 1 OF 1	

4

3

2

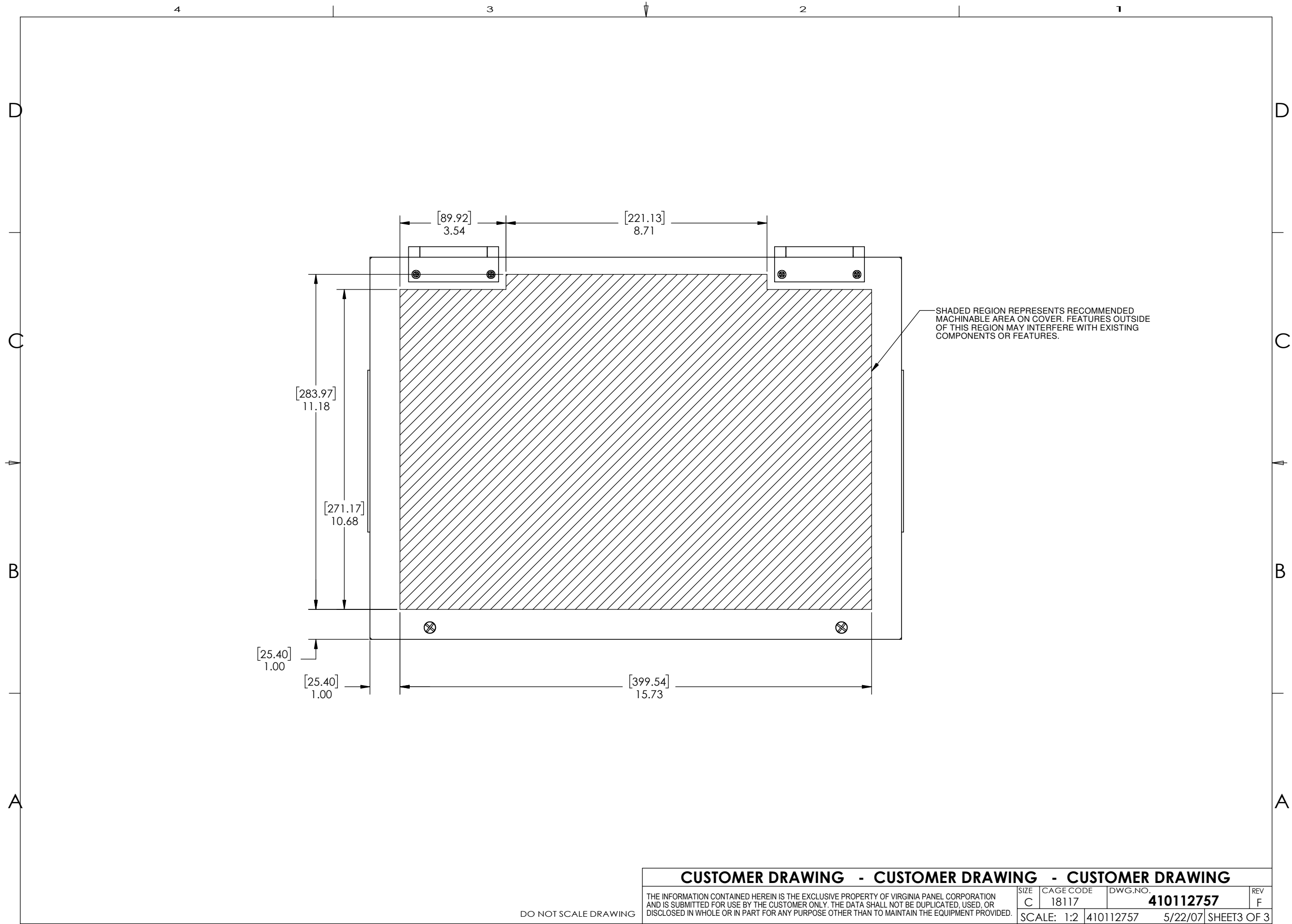
1

D

C

B

A



**CUSTOMER DRAWING - CUSTOMER DRAWING - CUSTOMER DRAWING**

THE INFORMATION CONTAINED HEREIN IS THE EXCLUSIVE PROPERTY OF VIRGINIA PANEL CORPORATION AND IS SUBMITTED FOR USE BY THE CUSTOMER ONLY. THE DATA SHALL NOT BE DUPLICATED, USED, OR DISCLOSED IN WHOLE OR IN PART FOR ANY PURPOSE OTHER THAN TO MAINTAIN THE EQUIPMENT PROVIDED.

SIZE	CAGE CODE	DWG.NO.	REV
C	18117	<b>410112757</b>	F
SCALE: 1:2		410112757	5/22/07 SHEET3 OF 3

DO NOT SCALE DRAWING