

8

7

6

5

4

3

2

1

DO NOT SCALE DRAWING

THE INFORMATION CONTAINED HEREIN IS THE EXCLUSIVE PROPERTY OF VPC AND IS PERMITTED FOR USE BY THE CUSTOMER ONLY. THE DATA SHALL NOT BE DUPLICATED, USED, OR DISCLOSED IN WHOLE OR IN PART FOR ANY PURPOSE OTHER THAN TO MAINTAIN THE EQUIPMENT PROVIDED. CONSULT WITH VIRGINIA PANEL CORPORATION ENGINEERING IF MORE DETAIL IS REQUIRED.

REVISIONS			
REV	DESCRIPTION	DATE	ENGR
D	ECN #12982	11/1/22	J HARDIGREE

D

D

C

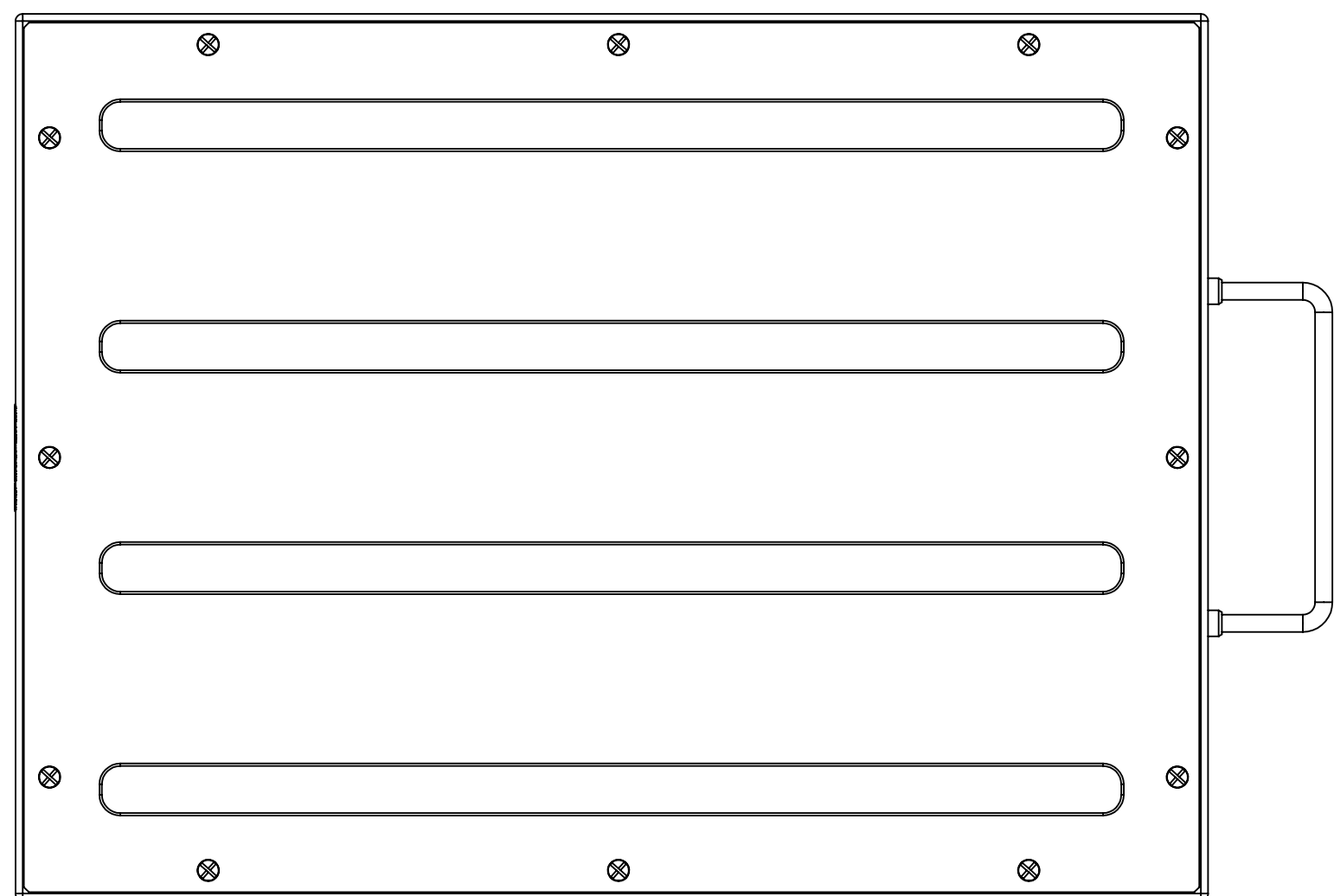
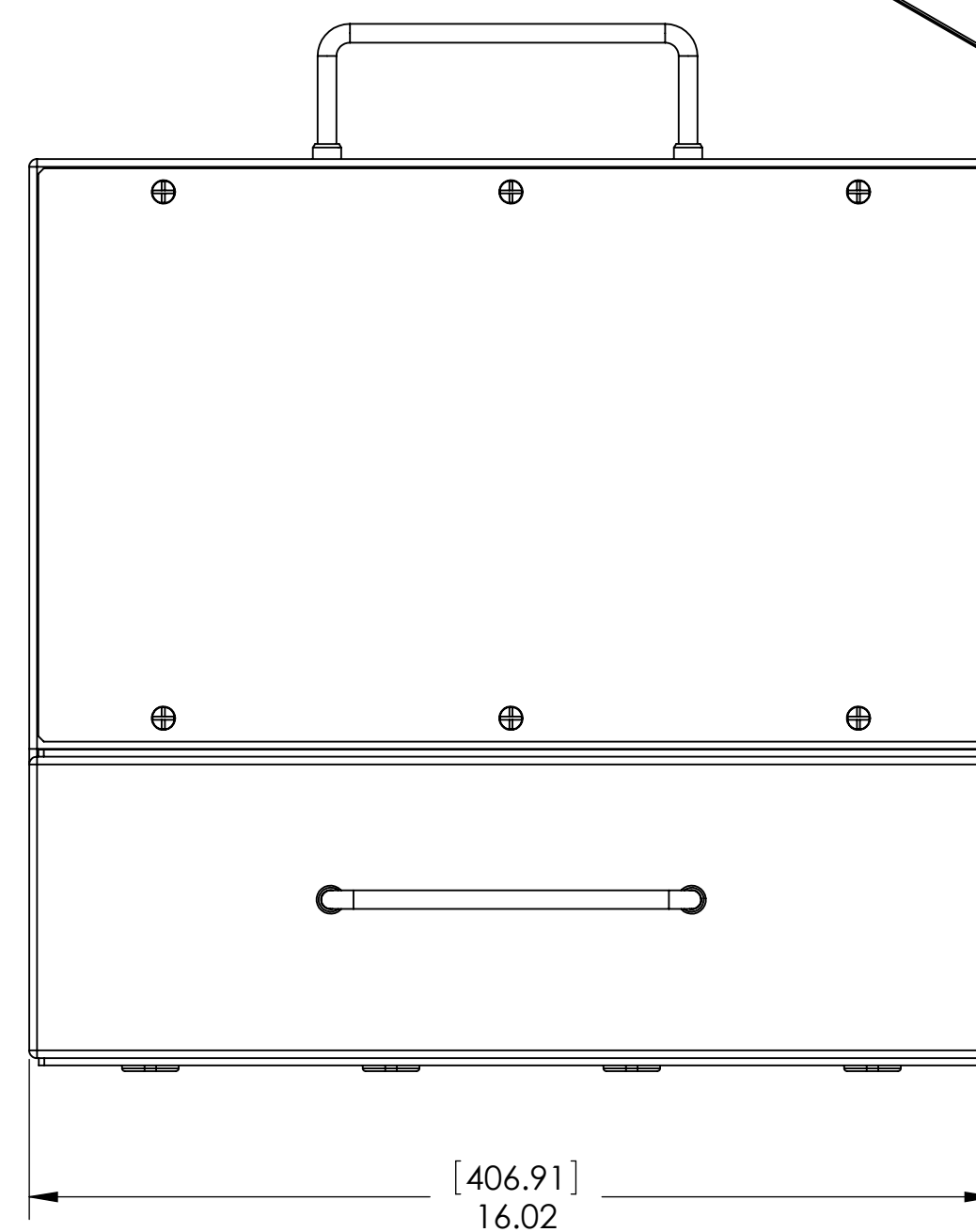
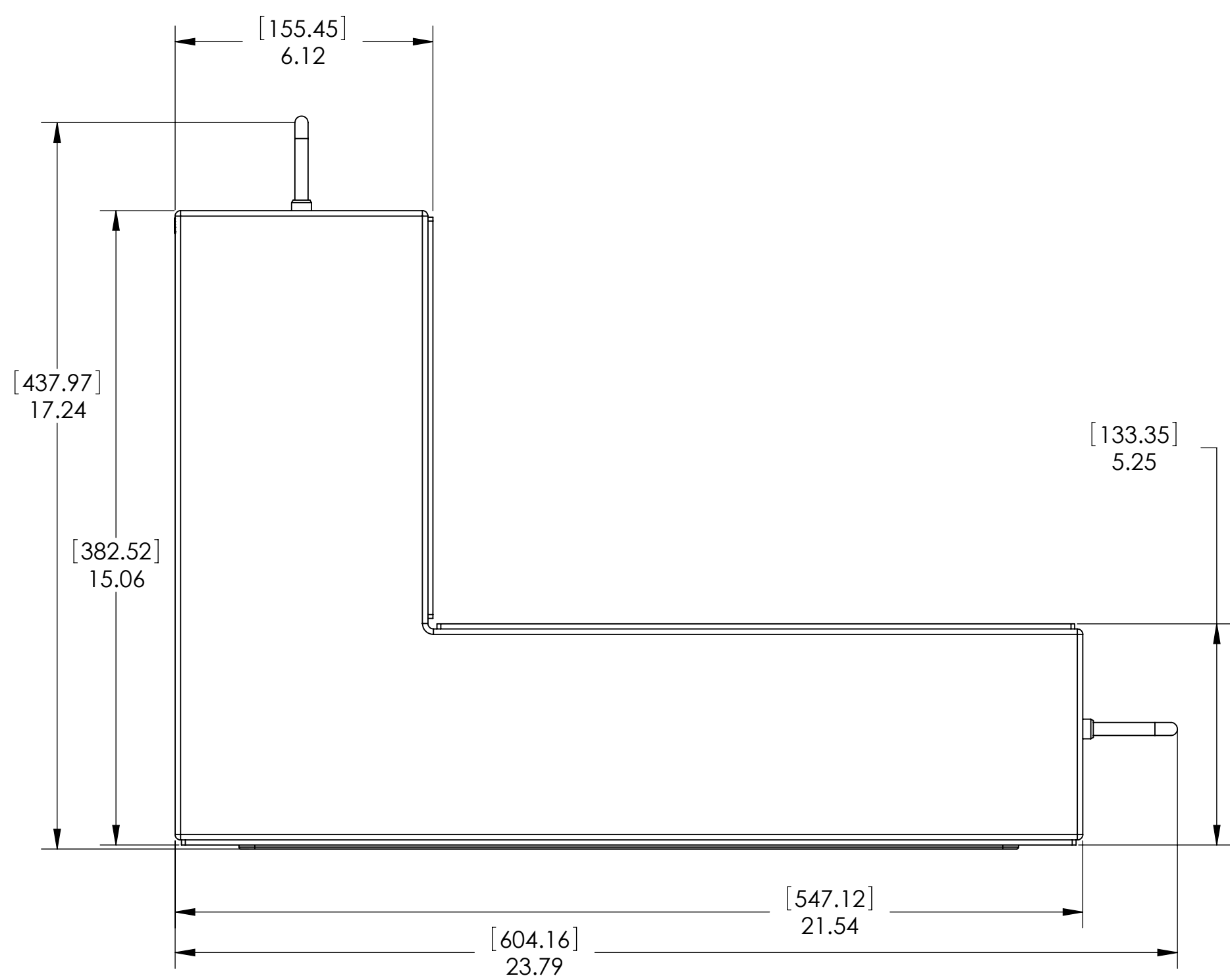
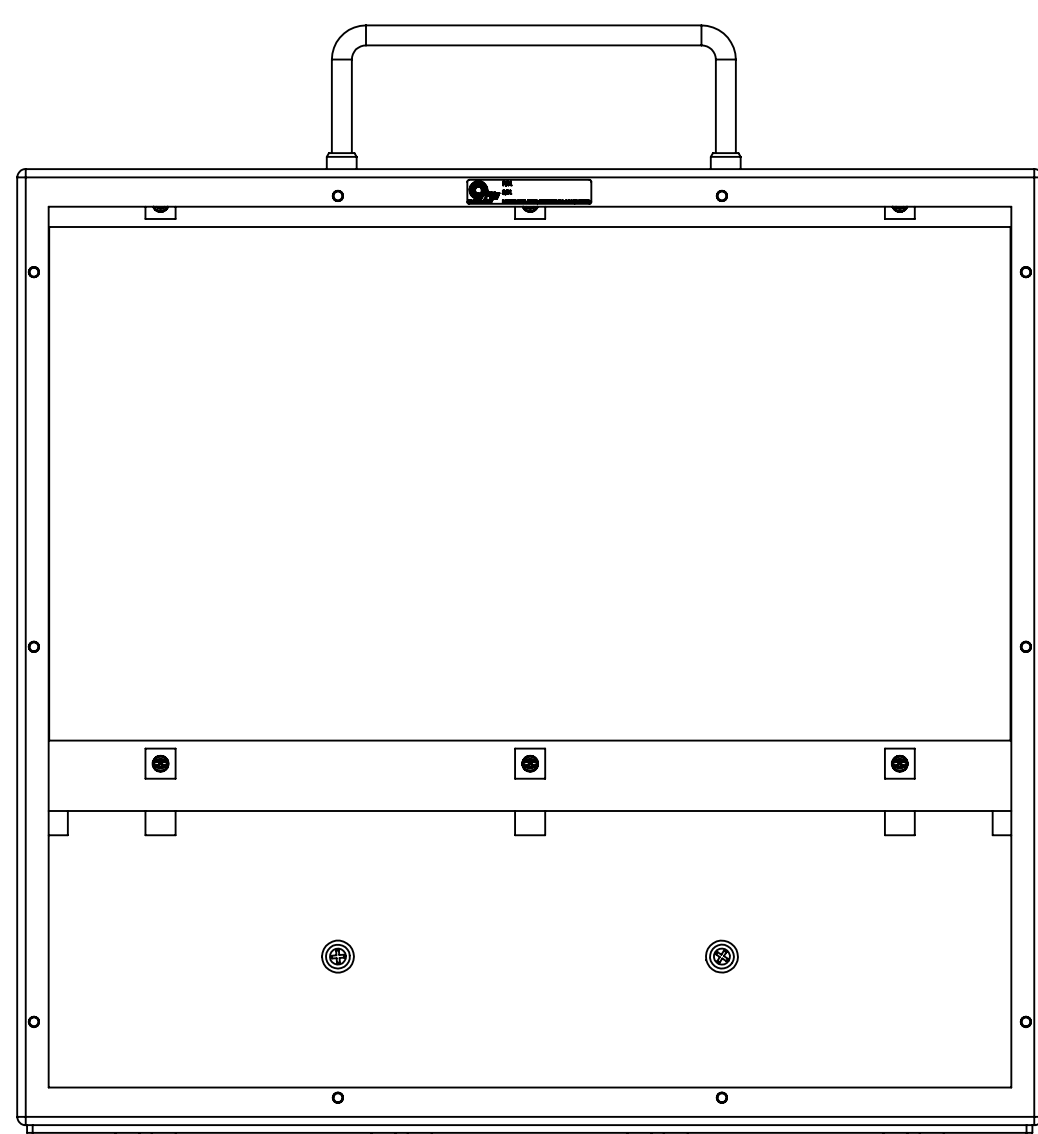
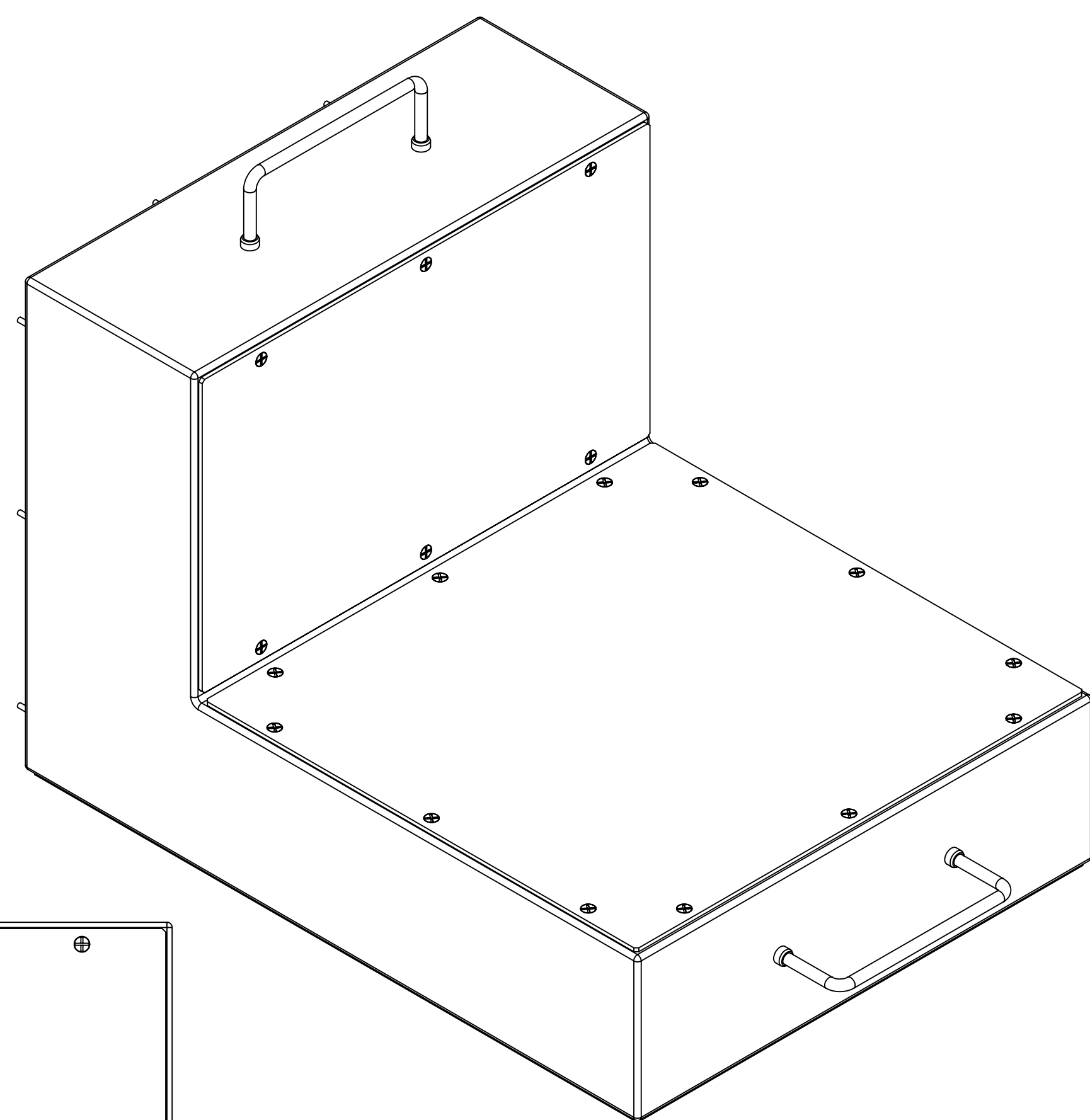
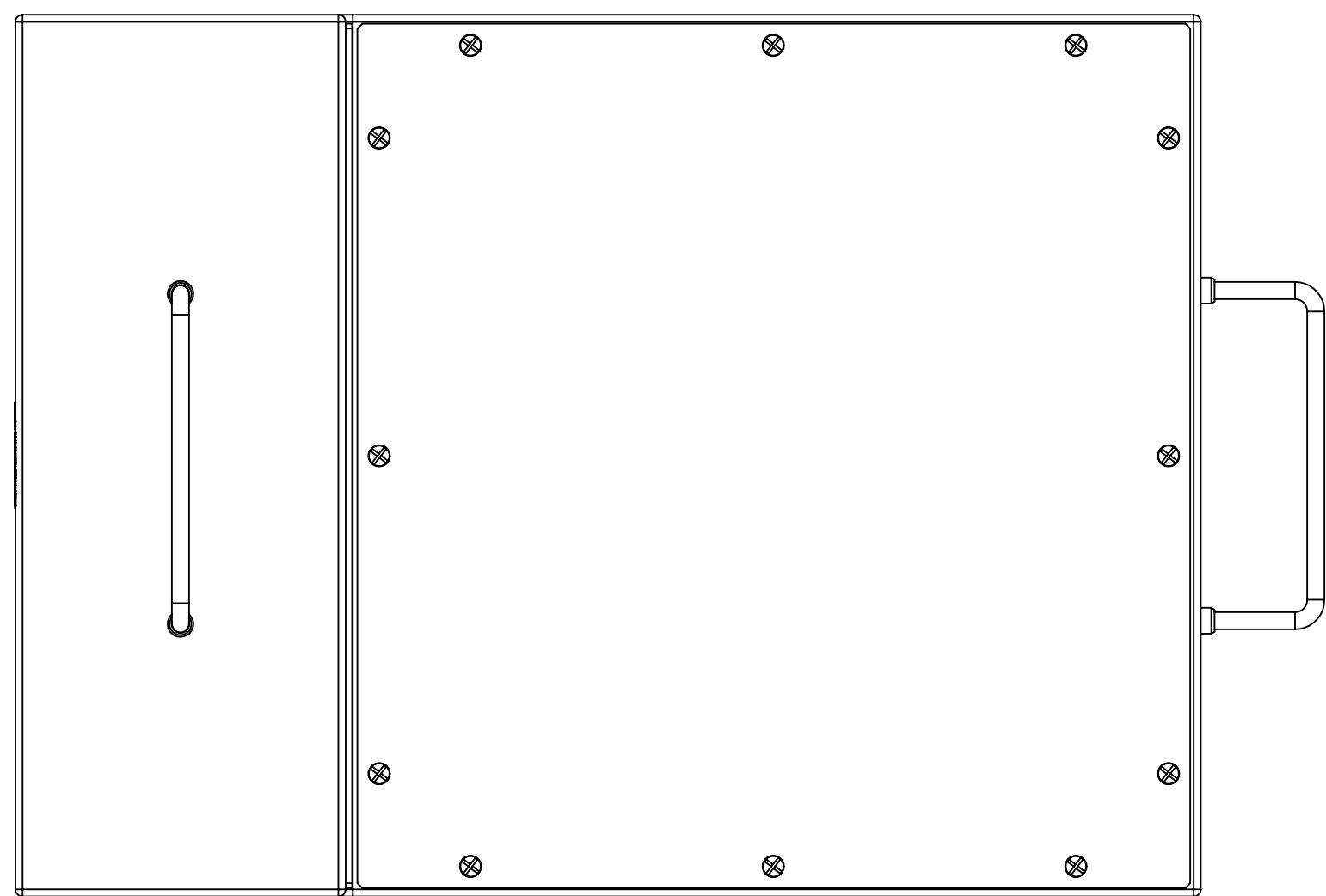
C

B

B

A

A



- 3. ENCLOSURE HAS 3 REMOVABLE PANELS FOR WIRING ACCESS.
- 2. HARDWARE IS INCLUDED TO MOUNT THIS ENCLOSURE TO ITA P/N 410104181.
- 1. FOR MORE INFORMATION, VISIT VPC.COM.

NOTES:

**CUSTOMER DRAWING**  
**VIRGINIA PANEL CORPORATION**  
 WWW.VPC.COM  
 ENCLOSURE, 9050 VXI, L-SHAPED

DIMENSIONS ARE SHOWN AS:	SIZE	CAGE CODE	DWG. NO.	REV
[MILLIMETERS]	D	18117	410112770	D
INCHES	SCALE: NONE	410112770	1/22/07	SHEET 1 OF 2

8

7

6

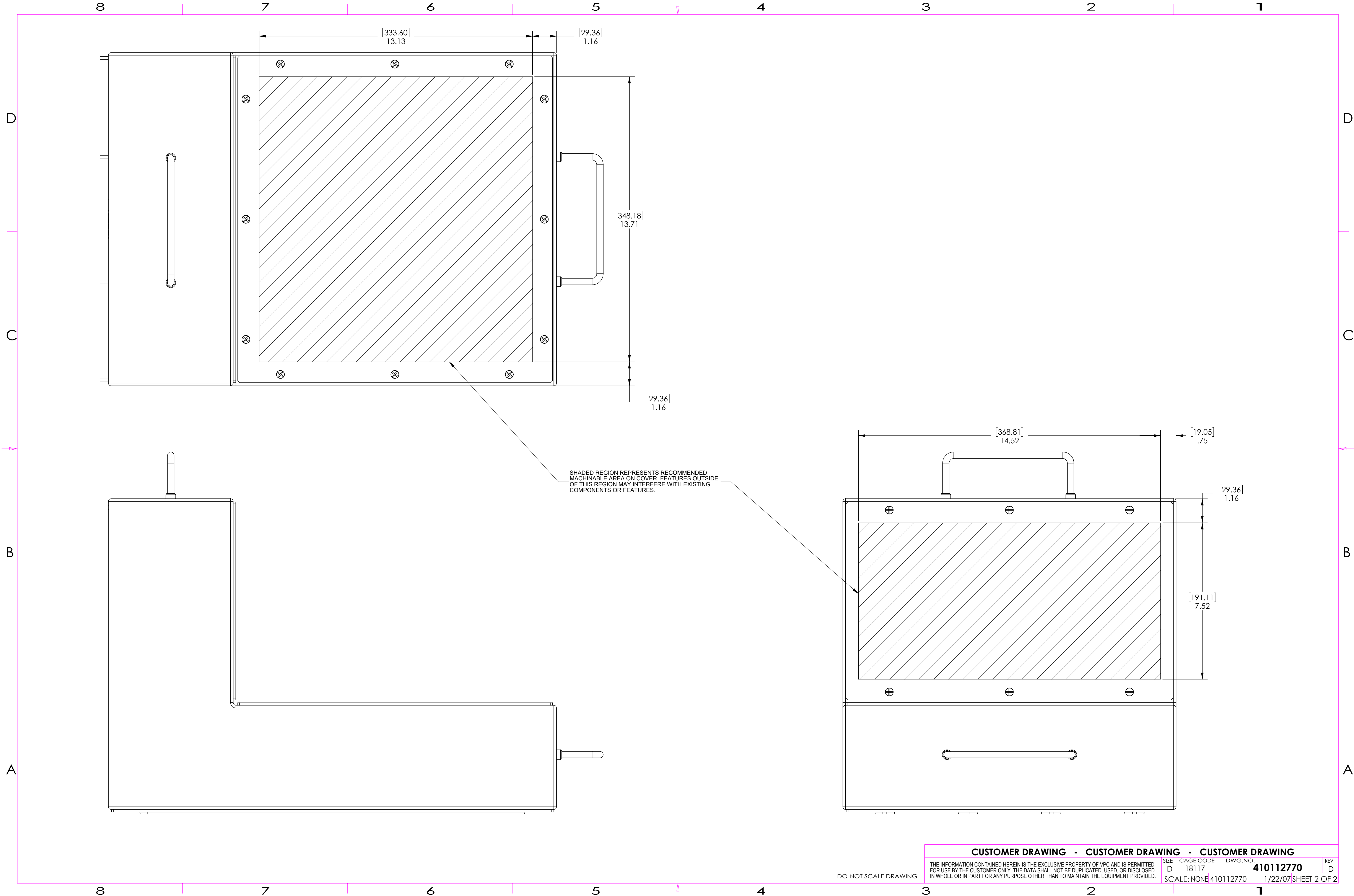
5

4

3

2

1



CUSTOMER DRAWING - CUSTOMER DRAWING - CUSTOMER DRAWING			
SIZE	CAGE CODE	DWG. NO.	REV
D	18117	410112770	D
SCALE: NONE		410112770	1/22/07 SHEET 2 OF 2

DO NOT SCALE DRAWING