

4

3

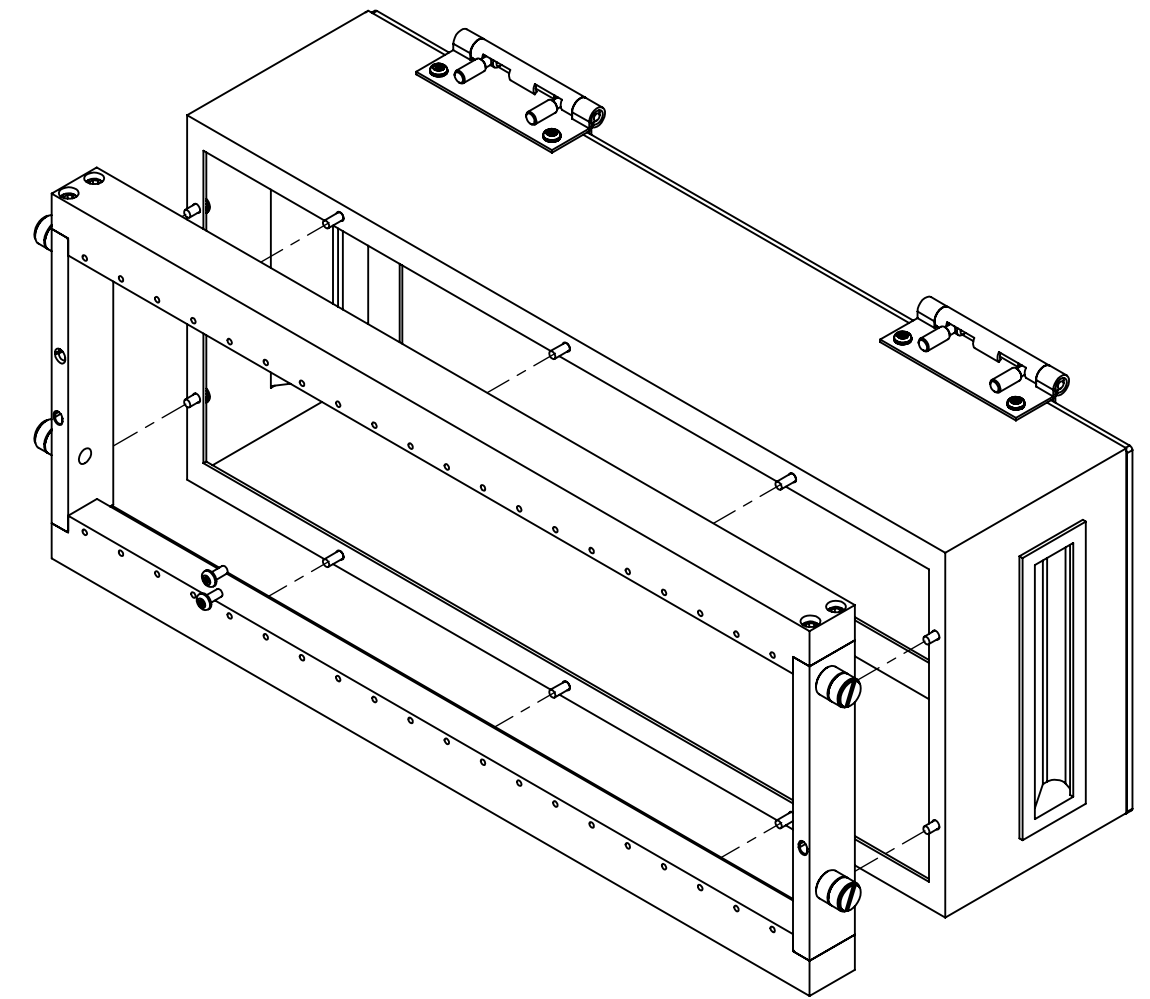
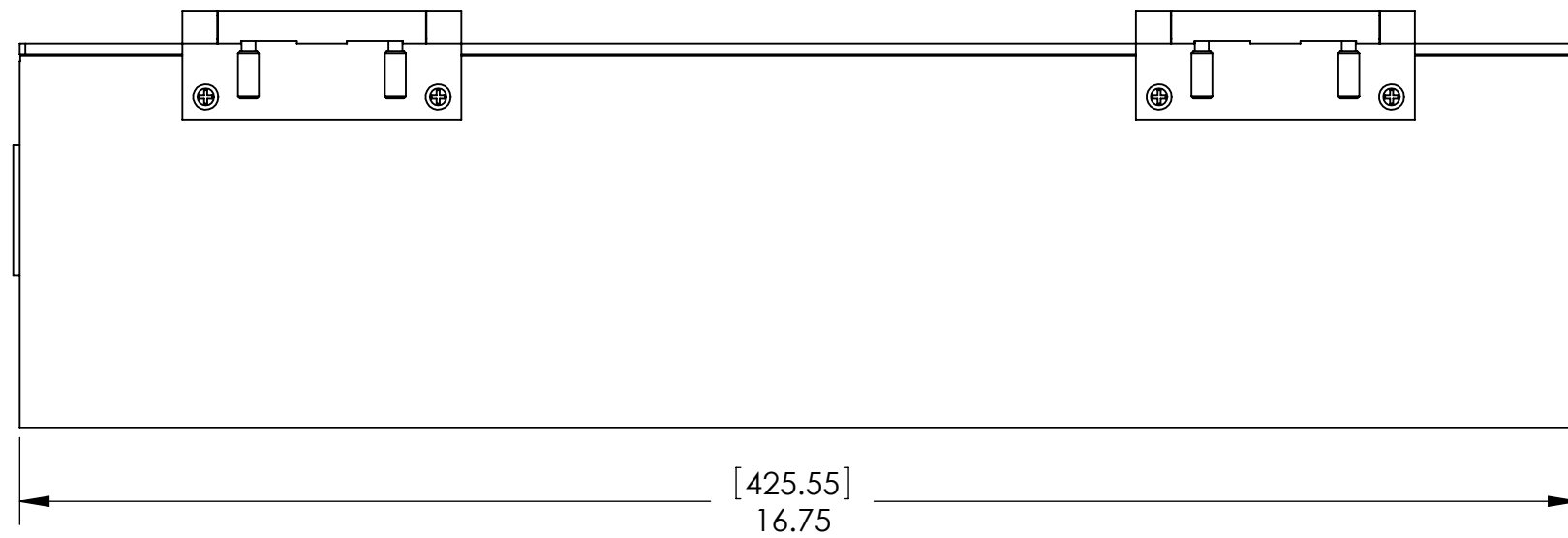
2

1

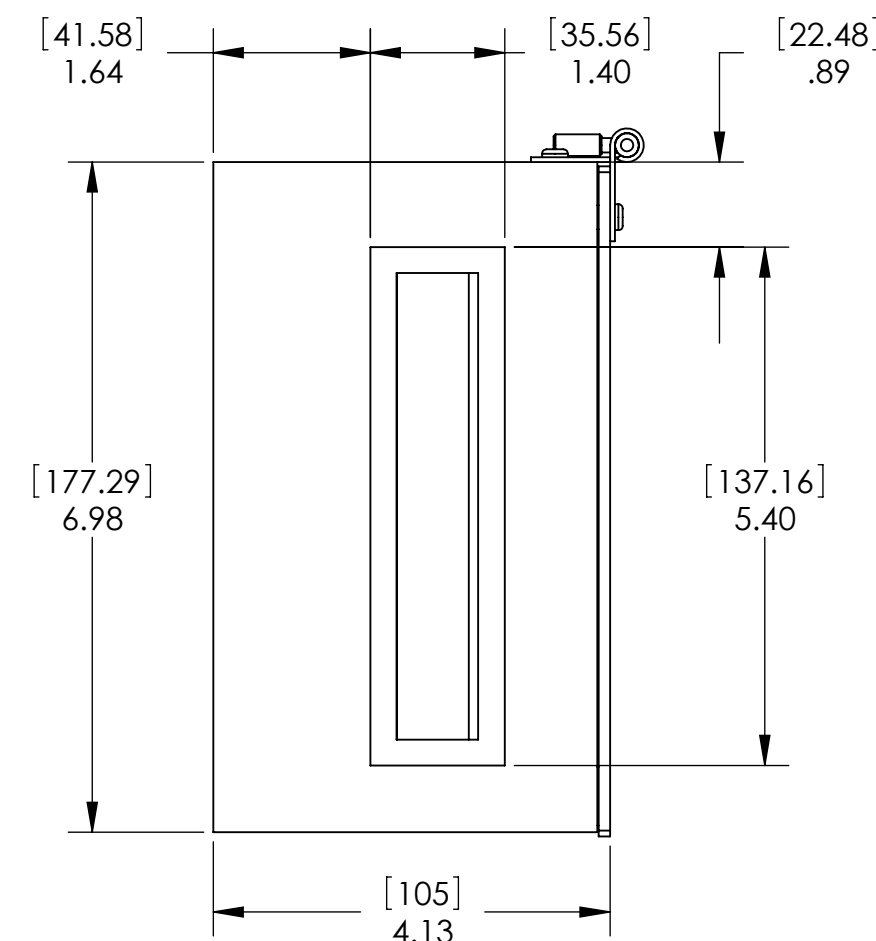
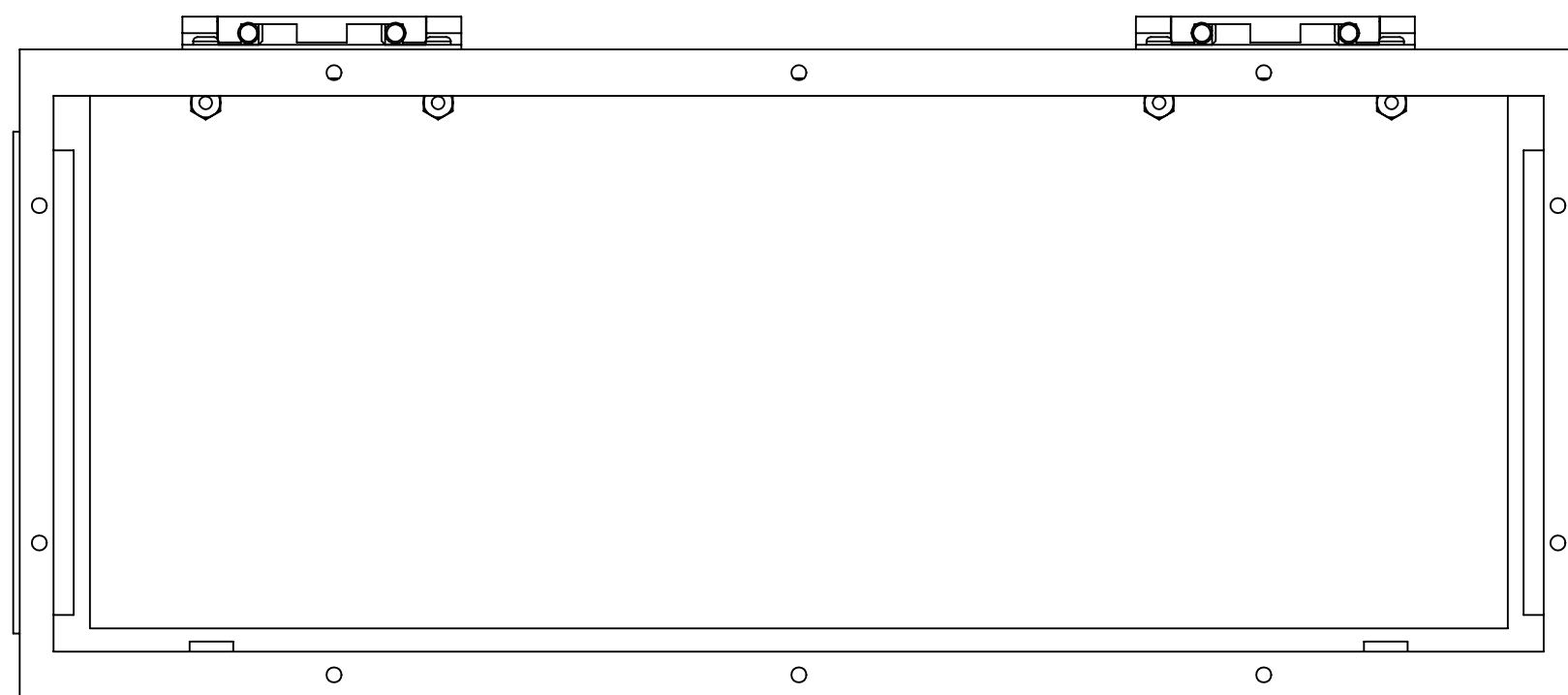
DO NOT SCALE DRAWING

THE INFORMATION CONTAINED HEREIN IS THE EXCLUSIVE PROPERTY OF VIRGINIA PANEL CORPORATION AND IS SUBMITTED FOR USE BY THE CUSTOMER ONLY. THE DATA SHALL NOT BE DUPLICATED, USED, OR DISCLOSED IN WHOLE OR IN PART FOR ANY PURPOSE OTHER THAN TO MAINTAIN THE EQUIPMENT PROVIDED. CONSULT WITH VIRGINIA PANEL CORPORATION ENGINEERING IF MORE DETAIL IS REQUIRED.

| REVISIONS | | | |
|-----------|-------------|---------|----------|
| REV | DESCRIPTION | DATE | ENGR |
| D | ECN #12600 | 5/26/22 | M ECKERT |



SHOWN MOUNTED TO ITA 410120150



2. HARDWARE IS INCLUDED FOR USE WITH ITA P/N: 410120150.
 QTY. 10 - PHL SCREW M3.5 x 8
 QTY. 16 - #6 LOCK WASHER

1. FOR APPLICATION USE & CARE INFORMATION CONSULT VPC USERS GUIDE @WWW.VPC.COM
 NOTES:

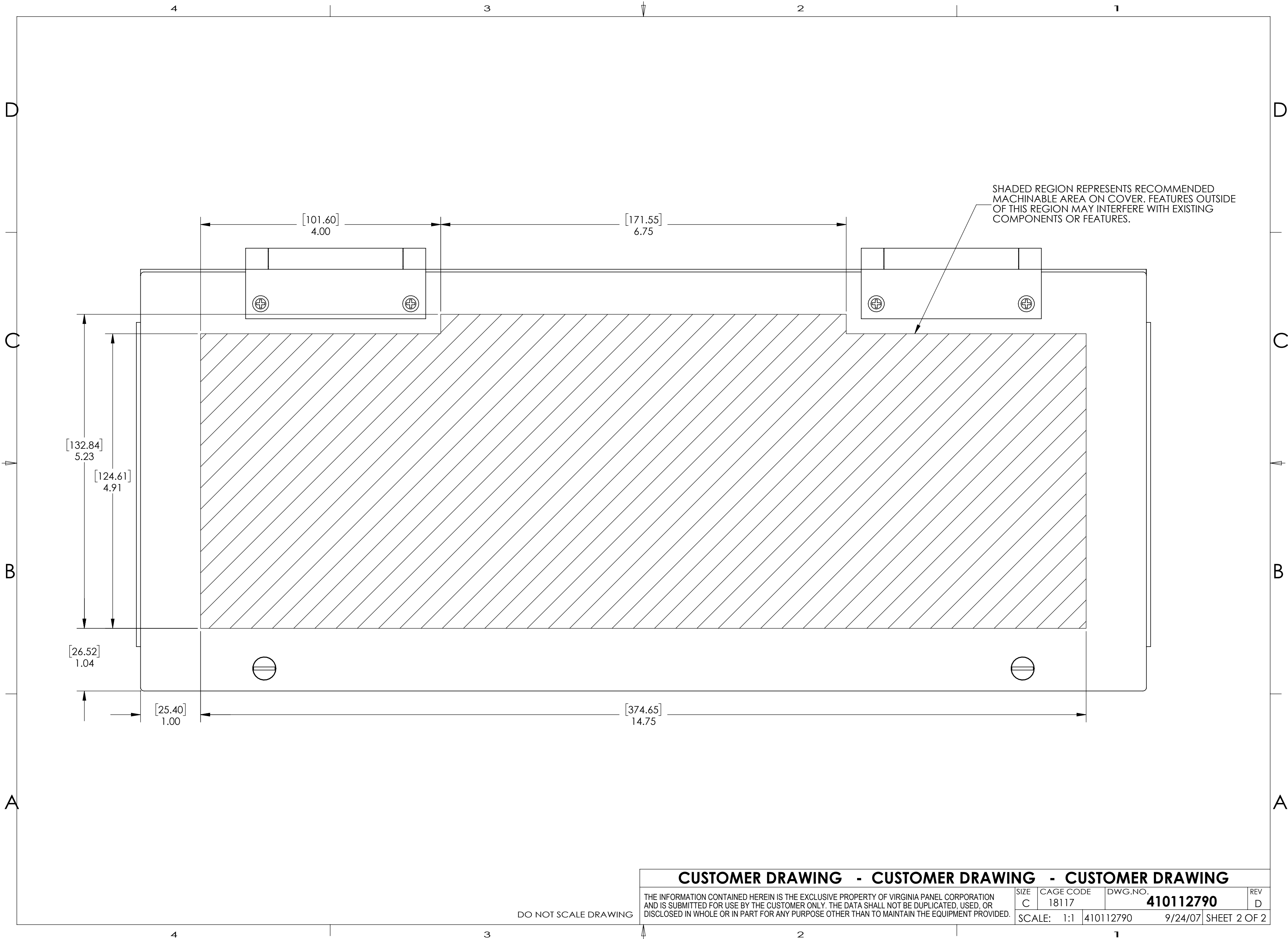
| | | | |
|--|------------|-----------|----------------------|
| CUSTOMER DRAWING | | | |
| VIRGINIA PANEL CORPORATION WWW.VPC.COM | | | |
| ITA ENCLOSURE 4" G20 20 MODULE | | | |
| DIMENSIONS ARE SHOWN AS: | SIZE | CAGE CODE | DWG. NO. |
| [MILLIMETERS] | C | 18117 | 410112790 |
| INCHES | SCALE: 1:2 | 410112790 | 9/24/07 SHEET 1 OF 2 |

4

3

2

1



CUSTOMER DRAWING - CUSTOMER DRAWING - CUSTOMER DRAWING

THE INFORMATION CONTAINED HEREIN IS THE EXCLUSIVE PROPERTY OF VIRGINIA PANEL CORPORATION AND IS SUBMITTED FOR USE BY THE CUSTOMER ONLY. THE DATA SHALL NOT BE DUPLICATED, USED, OR DISCLOSED IN WHOLE OR IN PART FOR ANY PURPOSE OTHER THAN TO MAINTAIN THE EQUIPMENT PROVIDED.

| | | | |
|--------|-----------|------------------|----------------------|
| SIZE | CAGE CODE | DWG.NO. | REV |
| C | 18117 | 410112790 | D |
| SCALE: | 1:1 | 410112790 | 9/24/07 SHEET 2 OF 2 |

DO NOT SCALE DRAWING