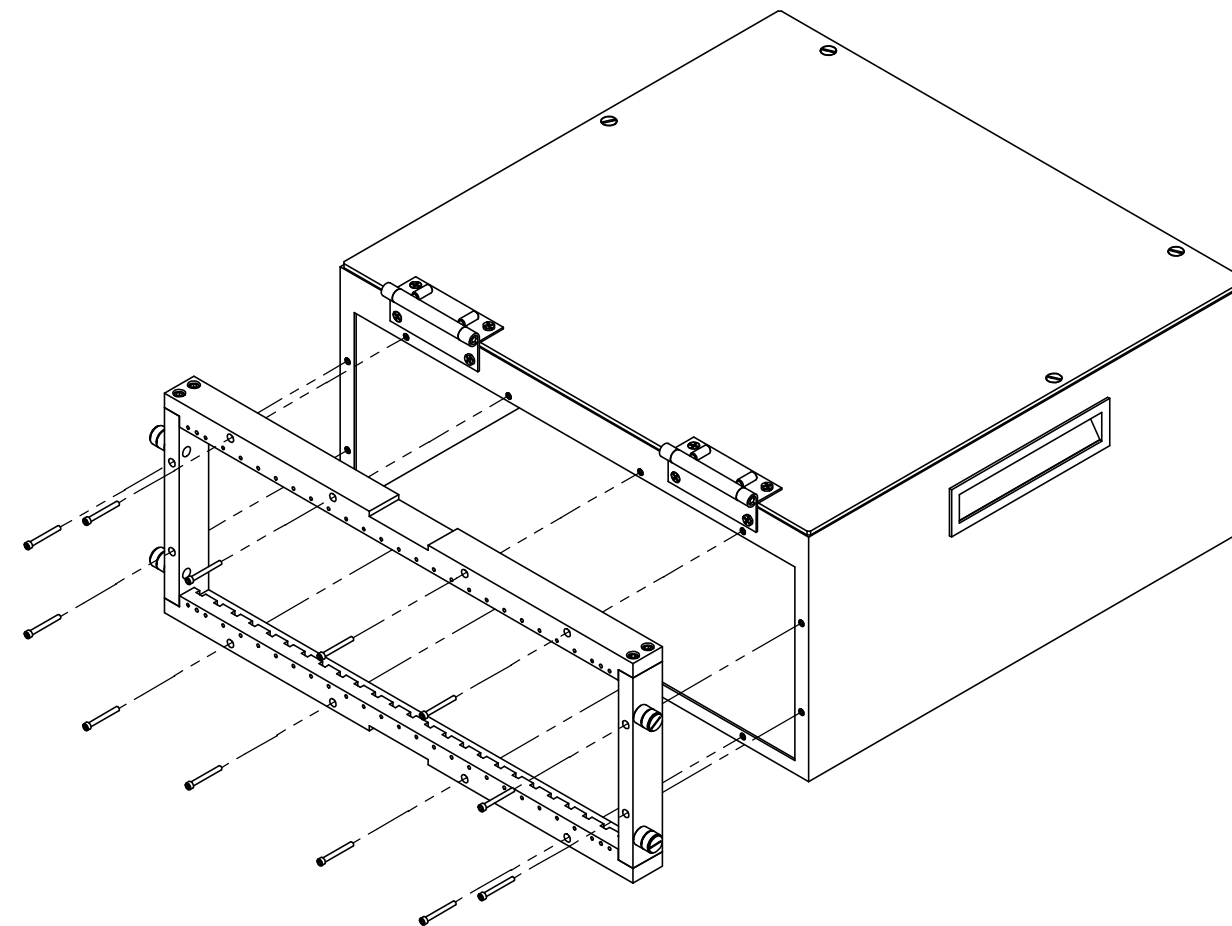
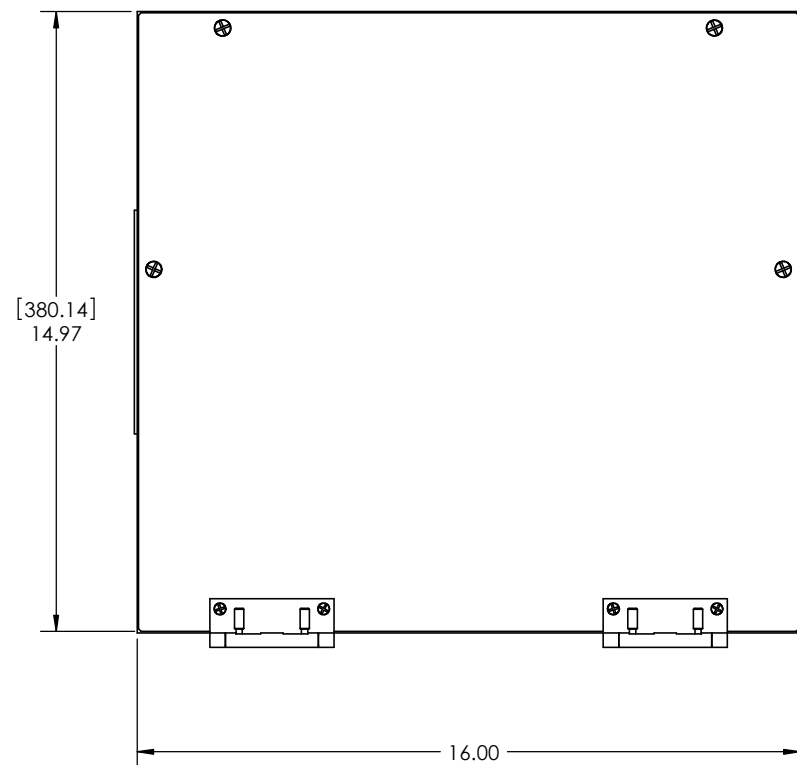


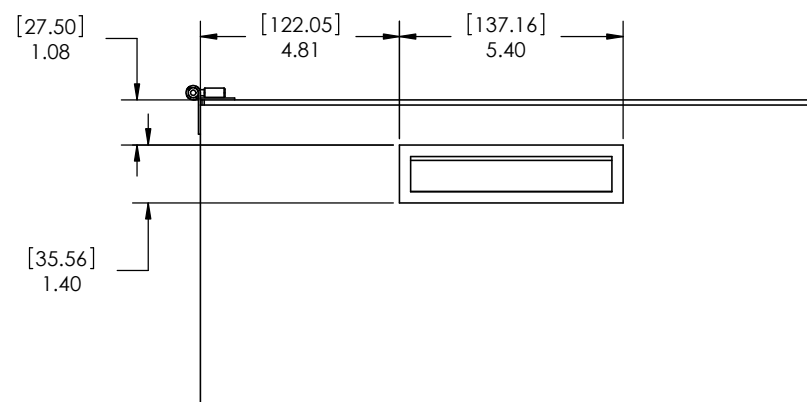
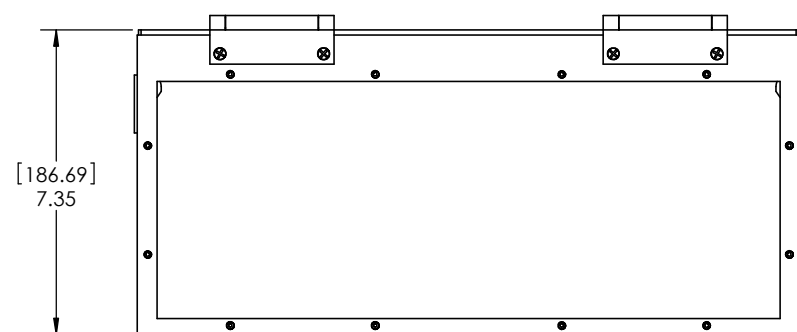
DO NOT SCALE DRAWING

THE INFORMATION CONTAINED HEREIN IS THE EXCLUSIVE PROPERTY OF VIRGINIA PANEL CORPORATION AND IS SUBMITTED FOR USE BY THE CUSTOMER ONLY. THE DATA SHALL NOT BE DUPLICATED, USED, OR DISCLOSED IN WHOLE OR IN PART FOR ANY PURPOSE OTHER THAN TO MAINTAIN THE EQUIPMENT PROVIDED. CONSULT WITH VIRGINIA PANEL CORPORATION ENGINEERING IF MORE DETAIL IS REQUIRED.

REVISIONS			
REV	DESCRIPTION	DATE	ENGR
F	ECN #8591	10/2/18	J SHAND



SHOWN MOUNTED TO ITA 410104111



3. HOUSING:  
MATERIAL = .06" [1.52] ALUMINUM.  
FINISH = POWDER COAT  
COVER:  
MATERIAL = .12" [3.05] ALUMINUM  
FINISH = BLACK ANODIZED
2. HARDWARE IS INCLUDED FOR USE WITH ITA P/N: 410104111 REV H OR LATER.
1. FOR APPLICATION USE & CARE INFORMATION CONSULT VPC USERS GUIDE @WWW.VPC.COM
- NOTES:

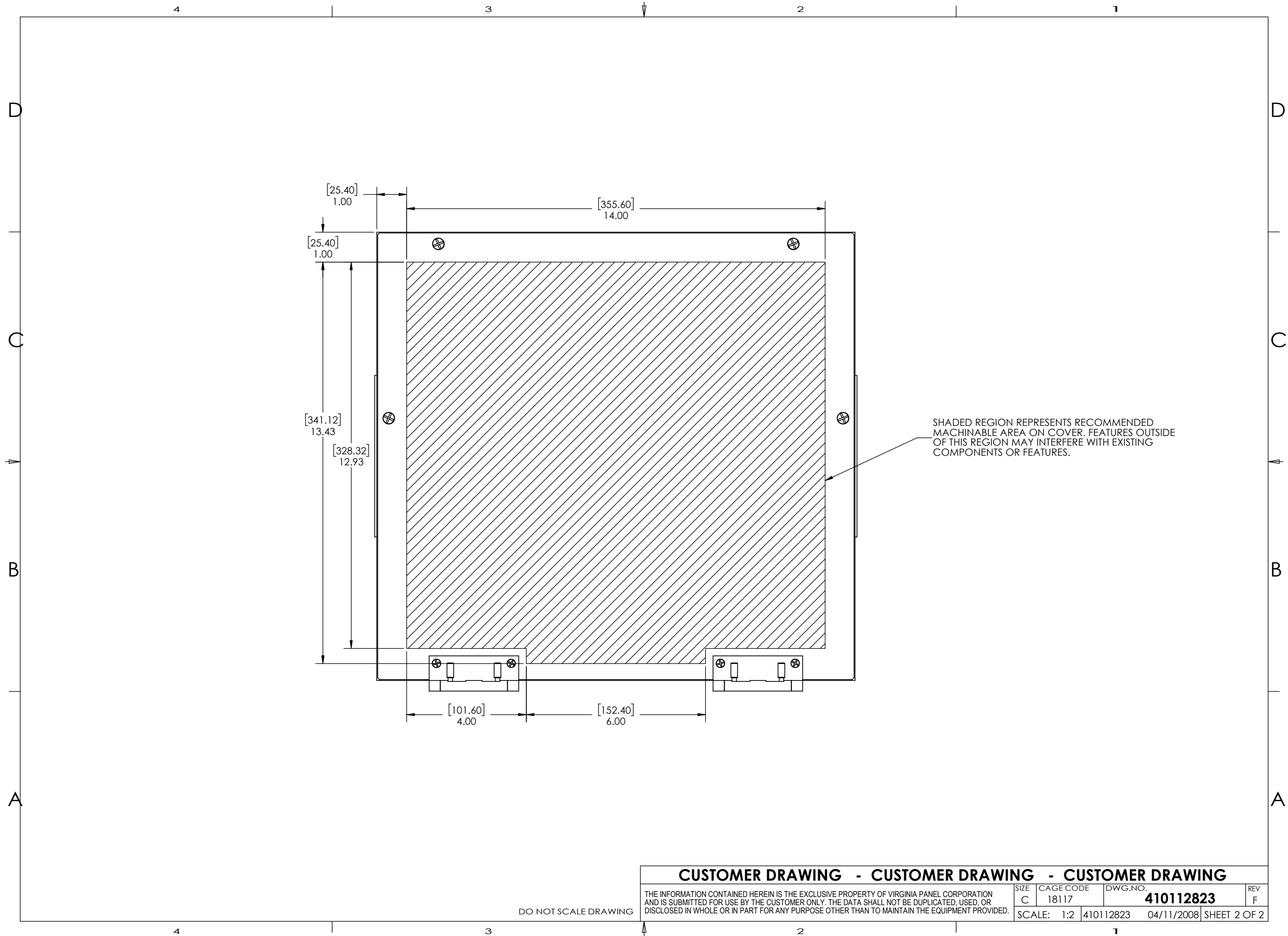
CUSTOMER DRAWING

VIRGINIA PANEL CORPORATION  
WWW.VPC.COM

ENCLOSURE ITA 25 MODULE  
FRONT MOUNT

DIMENSIONS ARE SHOWN AS:  
[MILLIMETERS]  
INCHES

SIZE	CAGE CODE	DWG. NO.	REV
C	18117	410112823	F
SCALE: 1:3		410112823 04/11/2008	SHEET 1 OF 2



**CUSTOMER DRAWING - CUSTOMER DRAWING - CUSTOMER DRAWING**

THE INFORMATION CONTAINED HEREIN IS THE EXCLUSIVE PROPERTY OF VIRGINIA PANEL CORPORATION AND IS SUBMITTED FOR USE BY THE CUSTOMER ONLY. THE DATA SHALL NOT BE DUPLICATED, USED, OR DISCLOSED IN WHOLE OR IN PART FOR ANY PURPOSE OTHER THAN TO MAINTAIN THE EQUIPMENT PROVIDED.

SIZE	CAGE CODE	DWG.NO.	REV
C	18117	<b>410112823</b>	F
SCALE:	1:2	410112823	04/11/2008 SHEET 2 OF 2

DO NOT SCALE DRAWING