

4

3

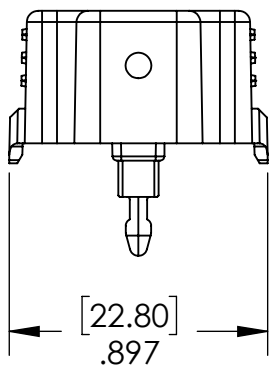
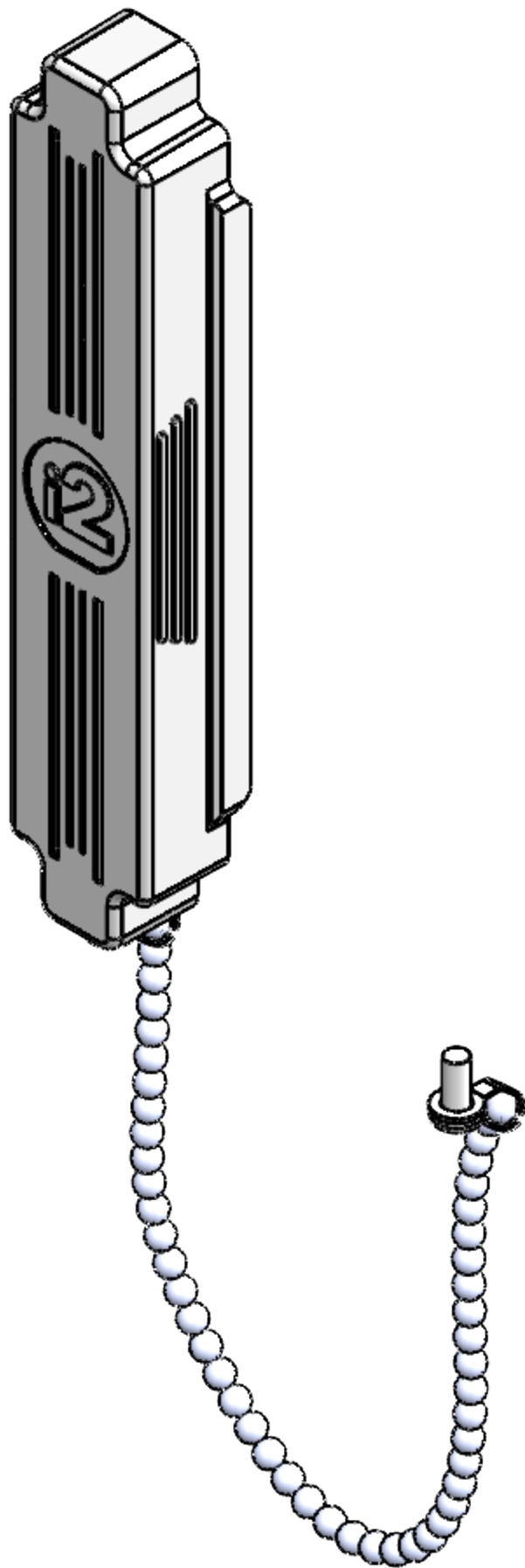
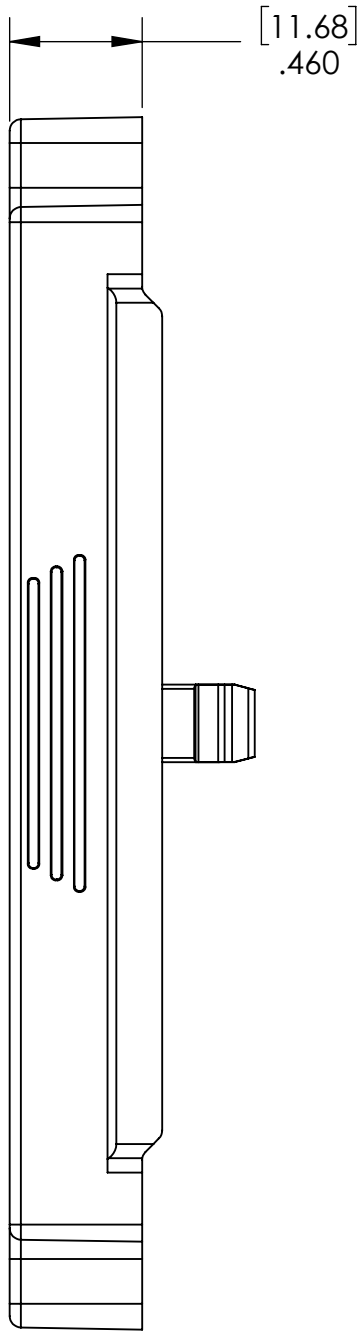
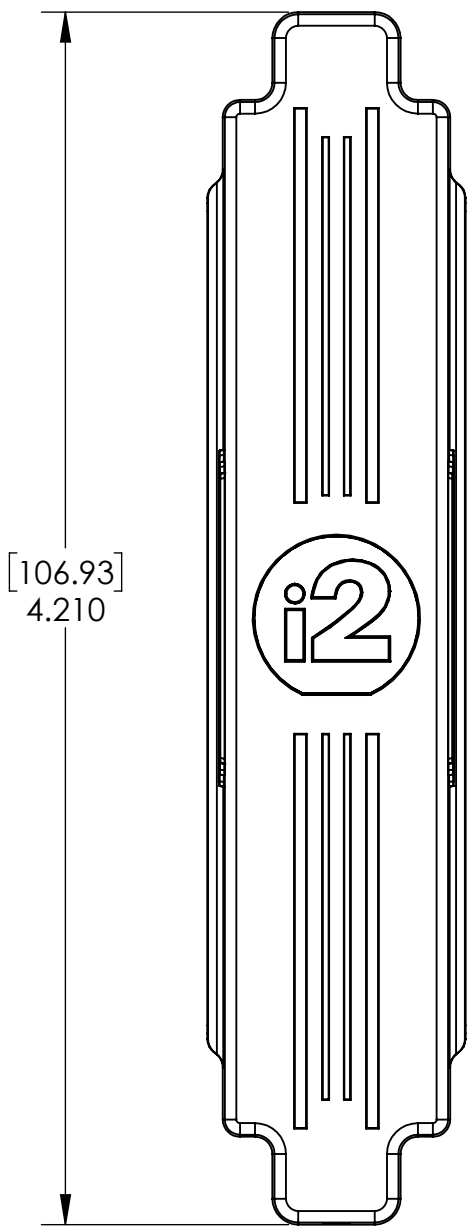
2

1

DO NOT SCALE DRAWING

THE INFORMATION CONTAINED HEREIN IS THE EXCLUSIVE PROPERTY OF VIRGINIA PANEL CORPORATION AND IS SUBMITTED FOR USE BY THE CUSTOMER ONLY. THE DATA SHALL NOT BE DUPLICATED, USED, OR DISCLOSED IN WHOLE OR IN PART FOR ANY PURPOSE OTHER THAN TO MAINTAIN THE EQUIPMENT PROVIDED. CONSULT WITH VIRGINIA PANEL CORPORATION ENGINEERING IF MORE DETAIL IS REQUIRED.

| REVISIONS | | | |
|-----------|-------------|--------|----------|
| REV | DESCRIPTION | DATE | ENGR |
| C | ECN #11866 | 9/8/21 | I COFFEY |



3. MATERIALS:
COVER - ZINC ALLOY, Ni PLATED
HARDWARE - STAINLESS STEEL
2. WORKS WITH STANDARD i2 AND i2 MX
1. FOR APPLICATION USE & CARE INFORMATION CONSULT VPC USERS GUIDE @WWW.VPC.COM
- NOTES:

| CUSTOMER DRAWING | | | |
|--|--------------------------|------------|-----------|
| VIRGINIA PANEL CORPORATION | | | |
| WWW.VPC.COM | | | |
| PROTECTIVE COVER, i2 ITA | | | |
| RELATIVE CONNECTOR POSITIONS AND WIRE ROUTING ARE GENERIC AND MAY VARY WITH PINOUT | DIMENSIONS ARE SHOWN AS: | SIZE | CAGE CODE |
| | [MILLIMETERS] INCHES | C | 18117 |
| | | DWG.NO. | 410113208 |
| | | SCALE: 3:2 | 8/4/16 |
| | | SHEET | 1 OF 1 |

4

3

2

1