

4

3

2

1

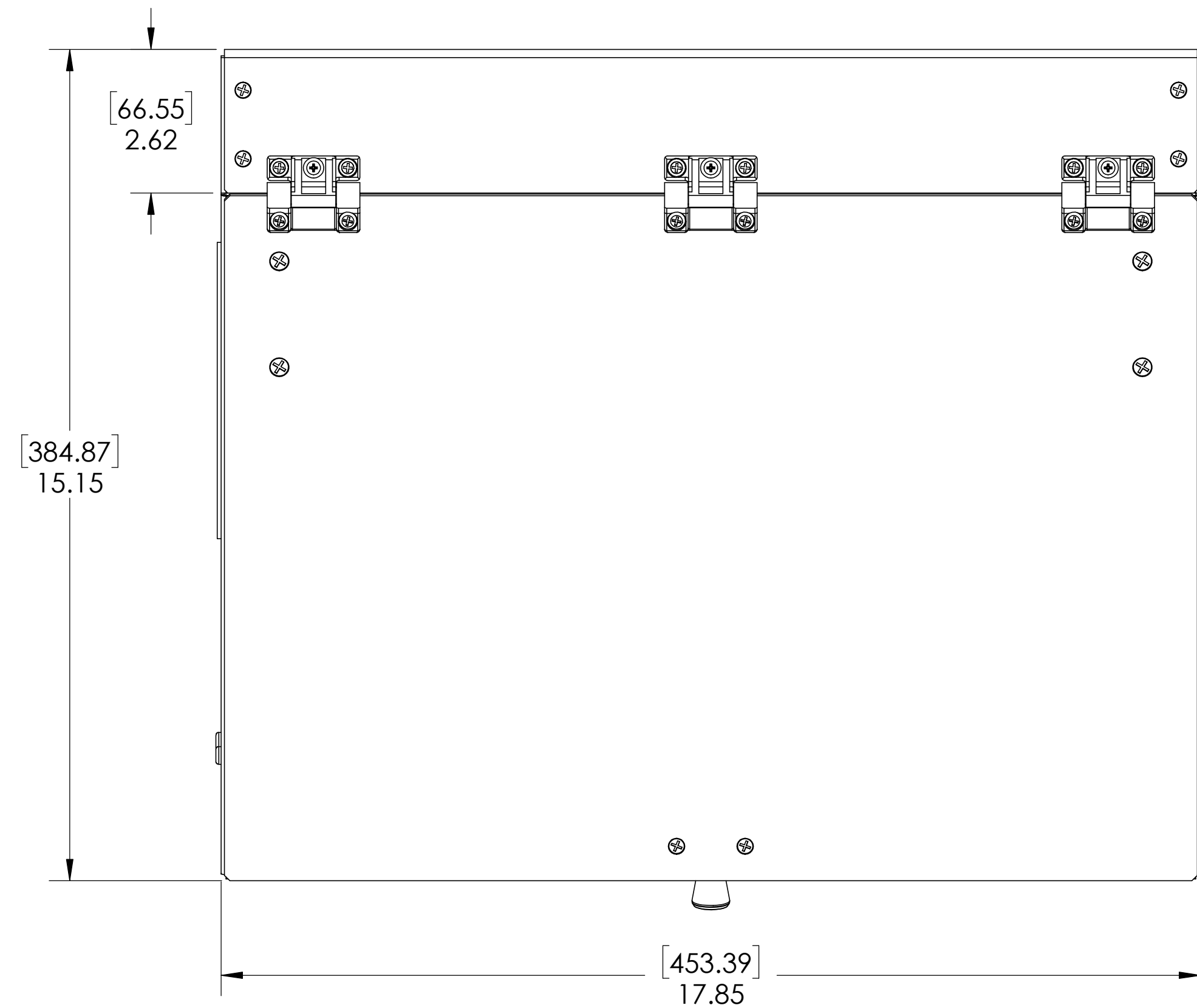
DO NOT SCALE DRAWING

THE INFORMATION CONTAINED HEREIN IS THE EXCLUSIVE PROPERTY OF VIRGINIA PANEL CORPORATION AND IS SUBMITTED FOR USE BY THE CUSTOMER ONLY. THE DATA SHALL NOT BE DUPLICATED, USED, OR DISCLOSED IN WHOLE OR IN PART FOR ANY PURPOSE OTHER THAN TO MAINTAIN THE EQUIPMENT PROVIDED. CONSULT WITH VIRGINIA PANEL CORPORATION ENGINEERING IF MORE DETAIL IS REQUIRED.

REVISIONS

REV	DESCRIPTION	DATE	ENGR
D	ECN #15813	5/13/26	S MARSHALL

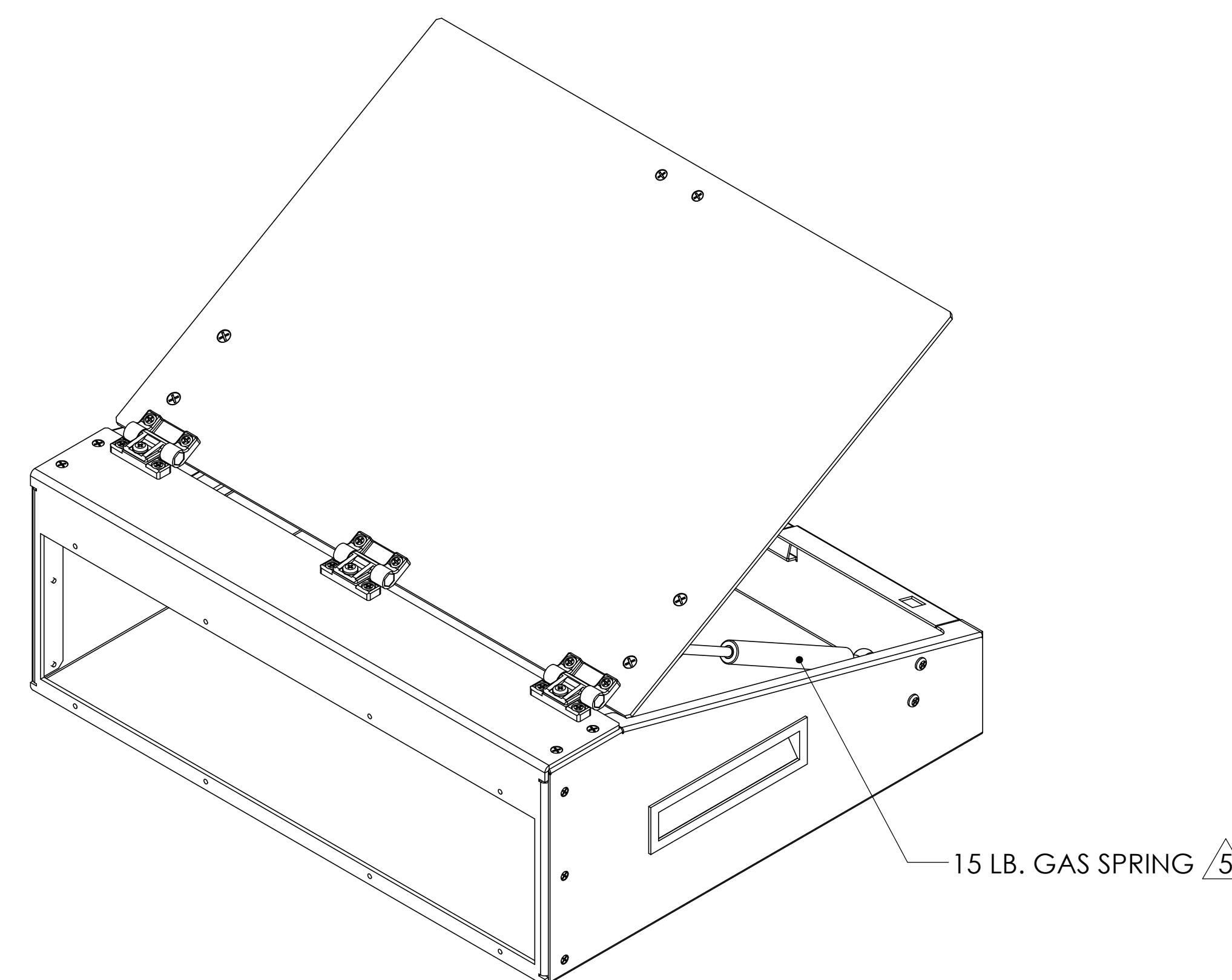
D



D

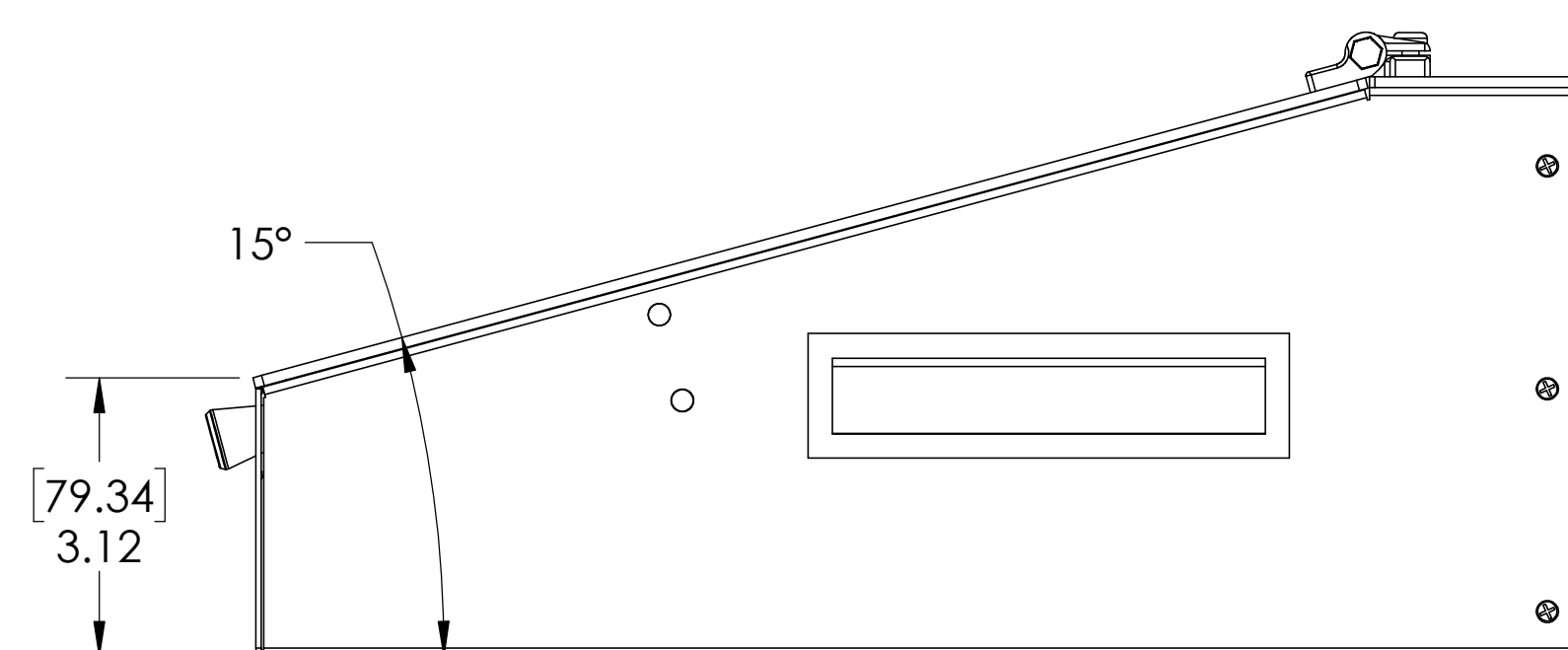
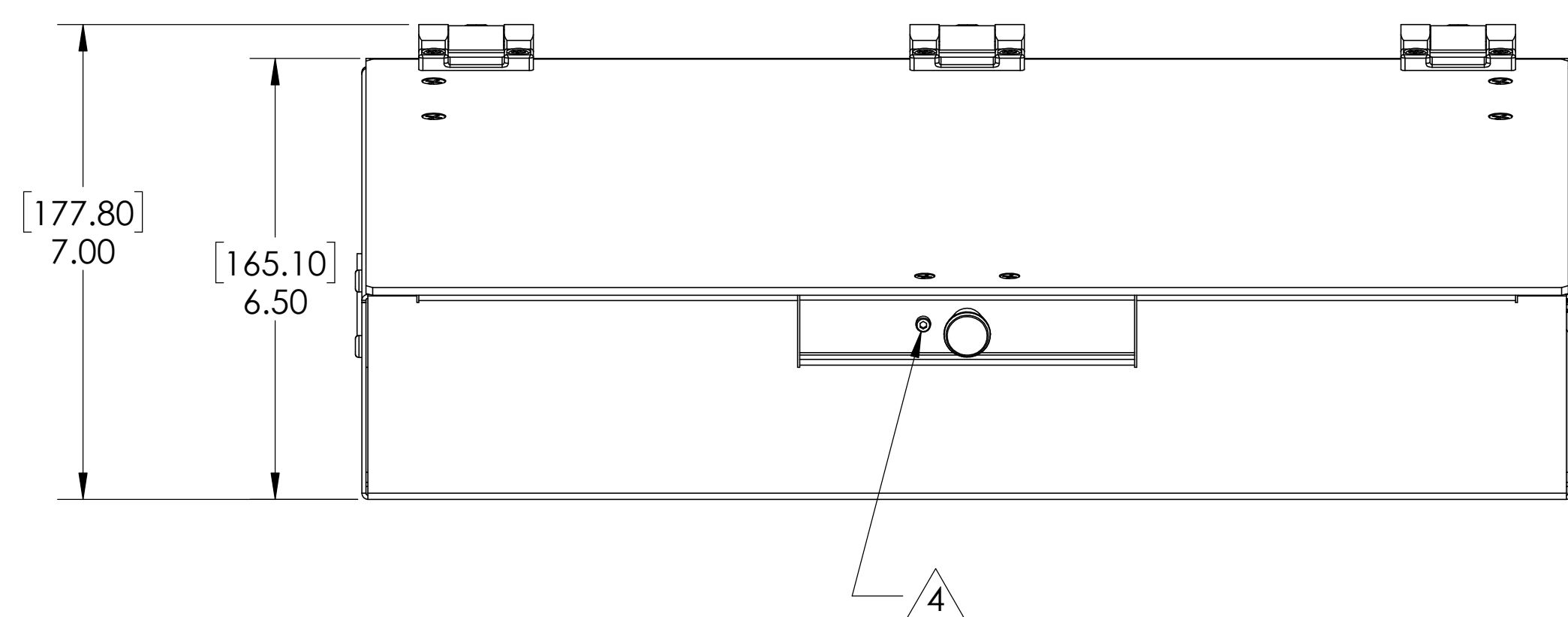
C

C



B

B



A

A

5 THE ENCLOSURE HOUSING AND COVER INCLUDE THE NECESSARY MOUNTING HOLES TO INSTALL THE GAS SPRING ON EITHER SIDE OF THE ENCLOSURE. REMOVE THE SPRING AND MOUNTING HARDWARE AND RE-INSTALL ON THE OPPOSITE SIDE IF DESIRED.

4 AS AN ALTERNATIVE TO THE SPRING PLUNGER LATCH, THE INCLUDED M3 X 10 SOCKET HEAD CAP SCREW CAN BE USED TO LOCK THE ENCLOSURE COVER IN THE CLOSED POSITION.

3. MATERIAL SPECIFICATIONS:  
ENCLOSURE - POWDER COATED & ANODIZED ALUMINUM ALLOY  
HARDWARE - STAINLESS STEEL  
HANDLES - BLACK THERMOPLASTIC

2. ITA MOUNTING HARDWARE INCLUDED. QTY 8, M4 X 45 SHC SCREWS

1. FOR APPLICATION USE & CARE INFORMATION CONSULT VPC USERS GUIDE @WWW.VPC.COM

NOTES:

CUSTOMER DRAWING

VIRGINIA PANEL CORPORATION  
WWW.VPC.COM

SLOPED ENCLOSURE, G12X ITA

RELATIVE CONNECTOR POSITIONS  
AND WIRE ROUTING ARE GENERIC  
AND MAY VARY WITH PINOUT.  
DIMENSIONS ARE SHOWN AS:  
[MILLIMETERS]  
INCHES

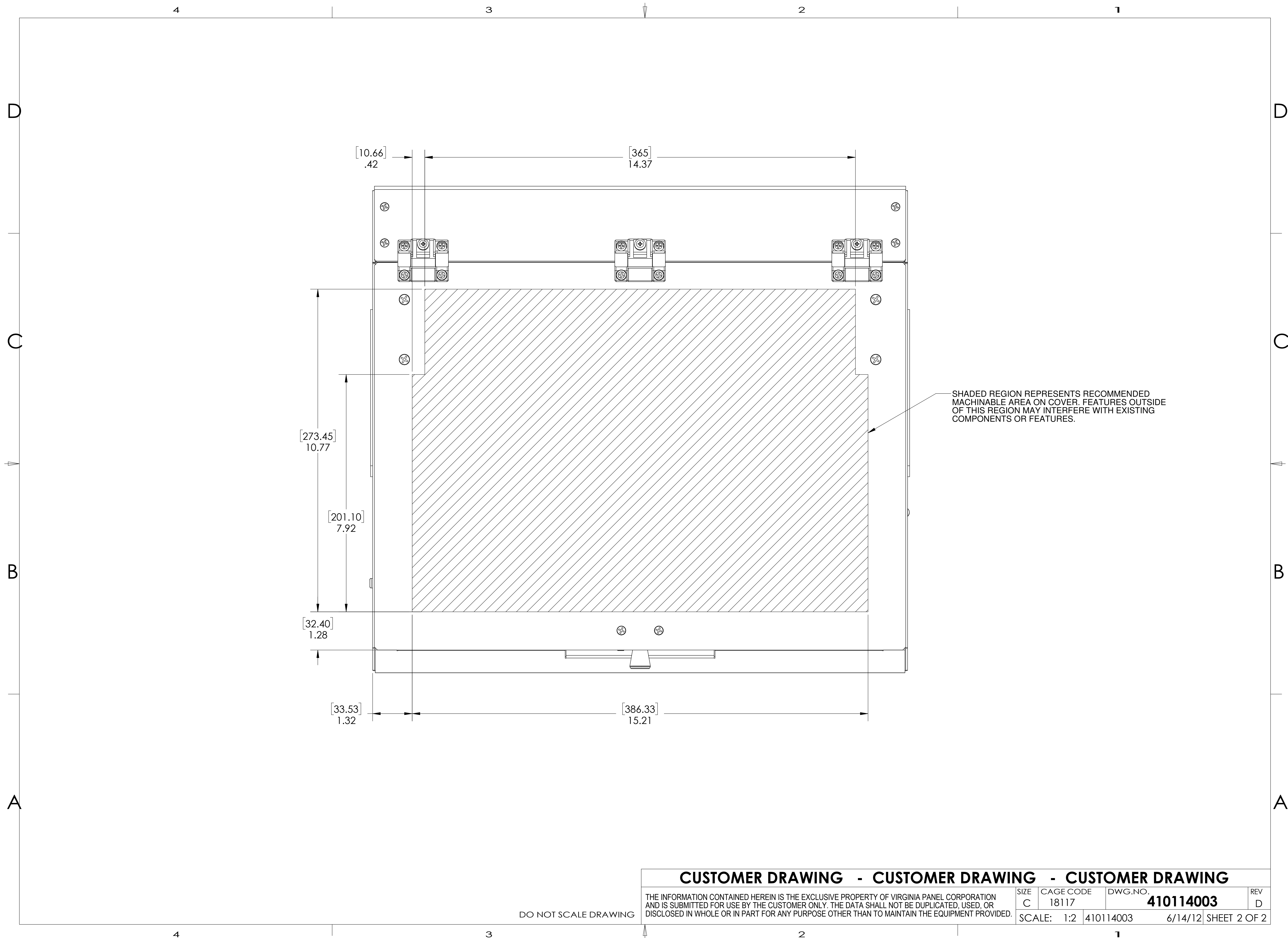
SIZE	CAGE CODE	DWG. NO.	REV
C	18117	410114003	D
SCALE: 1:3		410114003	5/29/12 SHEET 1 OF 2

4

3

2

1



**CUSTOMER DRAWING - CUSTOMER DRAWING - CUSTOMER DRAWING**

THE INFORMATION CONTAINED HEREIN IS THE EXCLUSIVE PROPERTY OF VIRGINIA PANEL CORPORATION AND IS SUBMITTED FOR USE BY THE CUSTOMER ONLY. THE DATA SHALL NOT BE DUPLICATED, USED, OR DISCLOSED IN WHOLE OR IN PART FOR ANY PURPOSE OTHER THAN TO MAINTAIN THE EQUIPMENT PROVIDED.

SIZE C	CAGE CODE 18117	DWG. NO. <b>410114003</b>	REV D
SCALE: 1:2		410114003	6/14/12 SHEET 2 OF 2

DO NOT SCALE DRAWING