

4

3

2

1

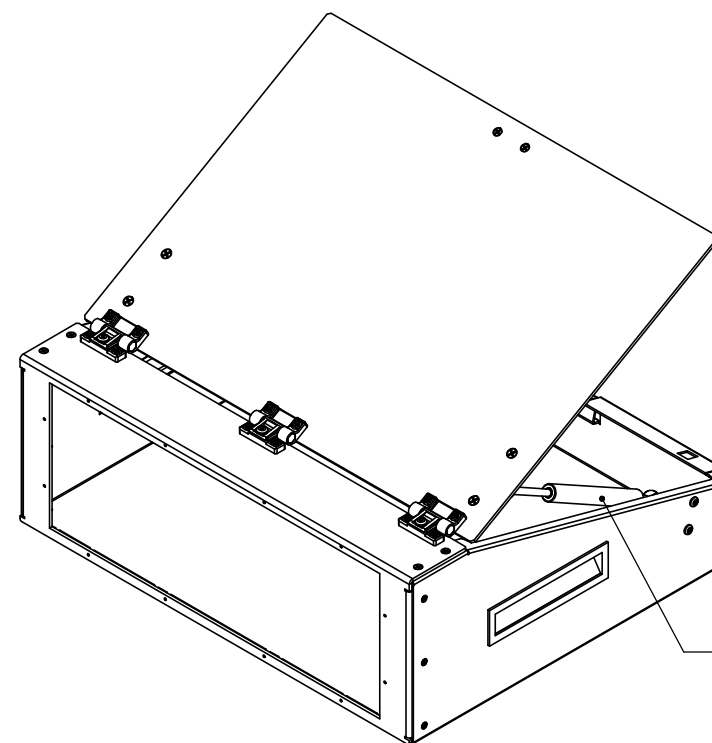
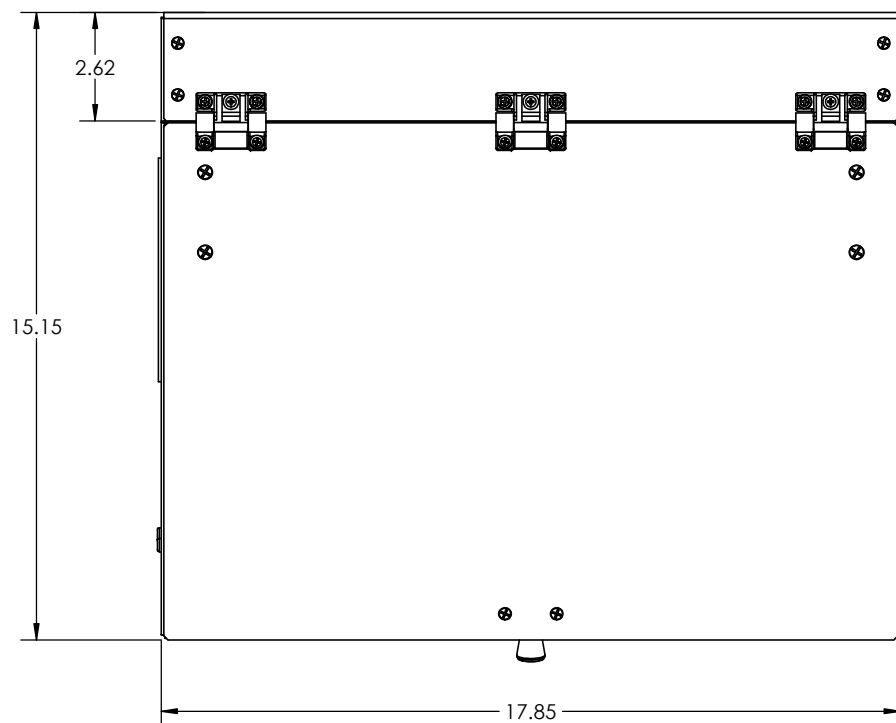
DO NOT SCALE DRAWING

THE INFORMATION CONTAINED HEREIN IS THE EXCLUSIVE PROPERTY OF VIRGINIA PANEL CORPORATION AND IS SUBMITTED FOR USE BY THE CUSTOMER ONLY. THE DATA SHALL NOT BE DUPLICATED, USED, OR DISCLOSED IN WHOLE OR IN PART FOR ANY PURPOSE OTHER THAN TO MAINTAIN THE EQUIPMENT PROVIDED. CONSULT WITH VIRGINIA PANEL CORPORATION ENGINEERING IF MORE DETAIL IS REQUIRED.

REVISIONS

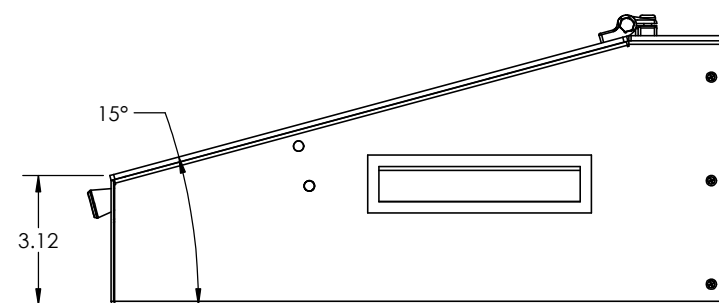
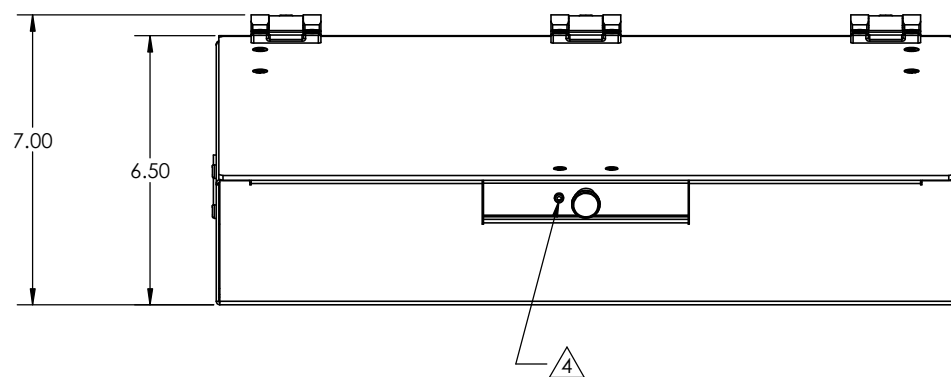
REV	DESCRIPTION	DATE	ENGR
C	ECN #4633	5/17/13	L LOCKRIDGE

D



C

B



A

5 THE ENCLOSURE HOUSING AND COVER INCLUDE THE NECESSARY MOUNTING HOLES TO INSTALL THE GAS SPRING ON EITHER SIDE OF THE ENCLOSURE. REMOVE THE SPRING AND MOUNTING HARDWARE AND RE-INSTALL ON THE OPPOSITE SIDE IF DESIRED.

4 AS AN ALTERNATIVE TO THE SPRING PLUNGER LATCH, THE INCLUDED M3 X 10 SOCKET HEAD CAP SCREW CAN BE USED TO LOCK THE ENCLOSURE COVER IN THE CLOSED POSITION.

3. MATERIAL SPECIFICATIONS:
 ENCLOSURE - POWDER COATED & ANODIZED ALUMINUM ALLOY
 HARDWARE - STAINLESS STEEL
 HANDLES - BLACK THERMOPLASTIC

2. ITA MOUNTING HARDWARE INCLUDED. QTY 12, 4-40 x 1.00" SHC SCREWS

1. FOR APPLICATION USE & CARE INFORMATION CONSULT VPC USERS GUIDE @WWW.VPC.COM

NOTES:

CUSTOMER DRAWING

VIRGINIA PANEL CORPORATION
WWW.VPC.COM

25 MODULE, FRONT MOUNT
SLOPED ENCLOSURE

RELATIVE CONNECTOR POSITIONS
 AND WIRE ROUTING ARE GENERIC
 AND MAY VARY WITH PRODUCT

DIMENSIONS ARE SHOWN AS:
 [MILLIMETERS]
 INCHES

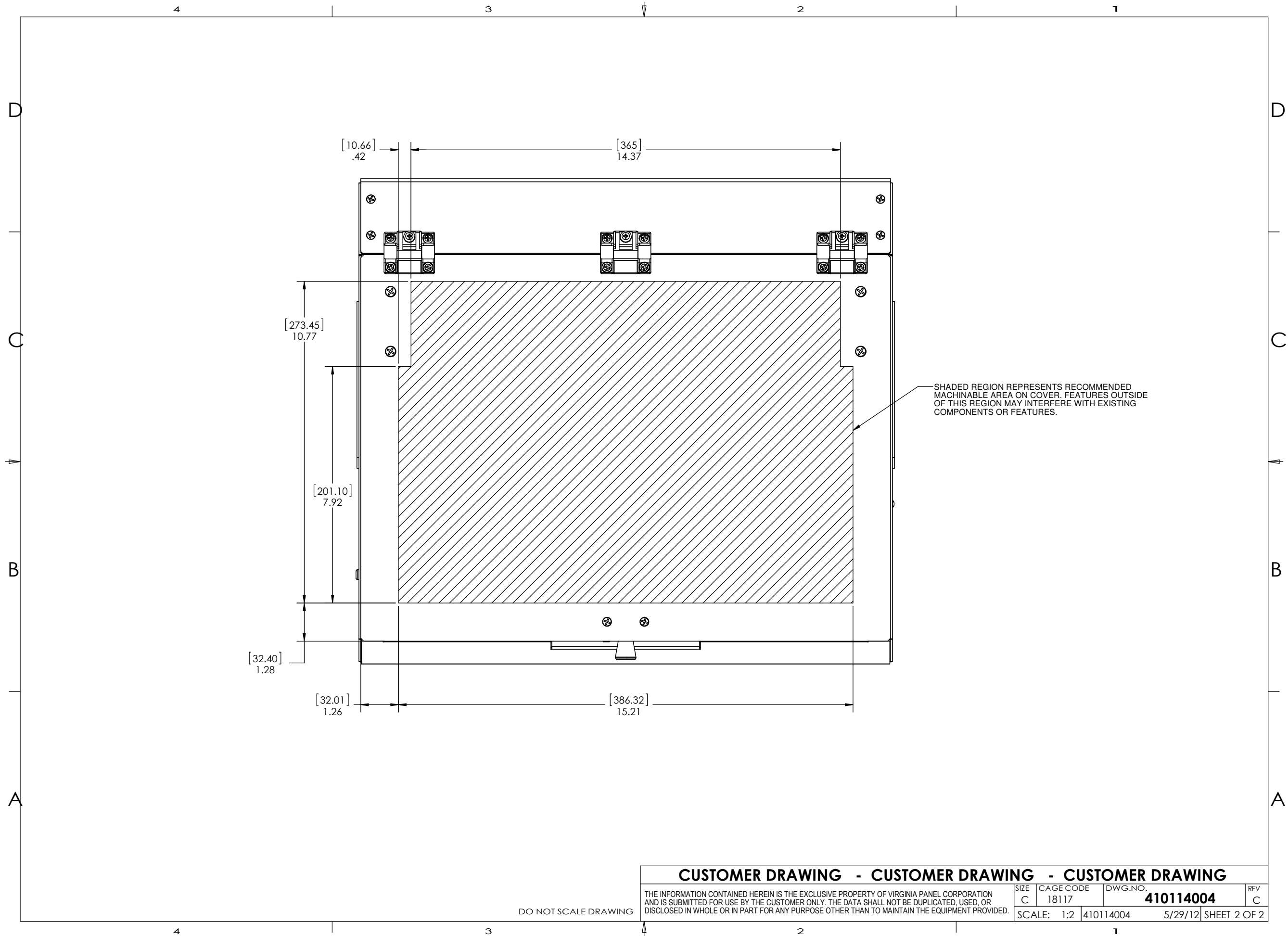
SIZE	CAGE CODE	DWG. NO.	REV
C	18117	410114004	C
SCALE: 1:3		410114004	5/29/12 SHEET 1 OF 2

4

3

2

1



CUSTOMER DRAWING - CUSTOMER DRAWING - CUSTOMER DRAWING

THE INFORMATION CONTAINED HEREIN IS THE EXCLUSIVE PROPERTY OF VIRGINIA PANEL CORPORATION AND IS SUBMITTED FOR USE BY THE CUSTOMER ONLY. THE DATA SHALL NOT BE DUPLICATED, USED, OR DISCLOSED IN WHOLE OR IN PART FOR ANY PURPOSE OTHER THAN TO MAINTAIN THE EQUIPMENT PROVIDED.

SIZE	CAGE CODE	DWG.NO.	REV
C	18117	410114004	C
SCALE:	1:2	410114004	5/29/12 SHEET 2 OF 2

DO NOT SCALE DRAWING