

4

3

2

1

DO NOT SCALE DRAWING

THE INFORMATION CONTAINED HEREIN IS THE EXCLUSIVE PROPERTY OF VIRGINIA PANEL CORPORATION AND IS SUBMITTED FOR USE BY THE CUSTOMER ONLY. THE DATA SHALL NOT BE DUPLICATED, USED, OR DISCLOSED IN WHOLE OR IN PART FOR ANY PURPOSE OTHER THAN TO MAINTAIN THE EQUIPMENT PROVIDED. CONSULT WITH VIRGINIA PANEL CORPORATION ENGINEERING IF MORE DETAIL IS REQUIRED.

REVISIONS

REV	DESCRIPTION	DATE	ENGR
B	ECN #15167	7/18/2025	R GARMAN

D

D

C

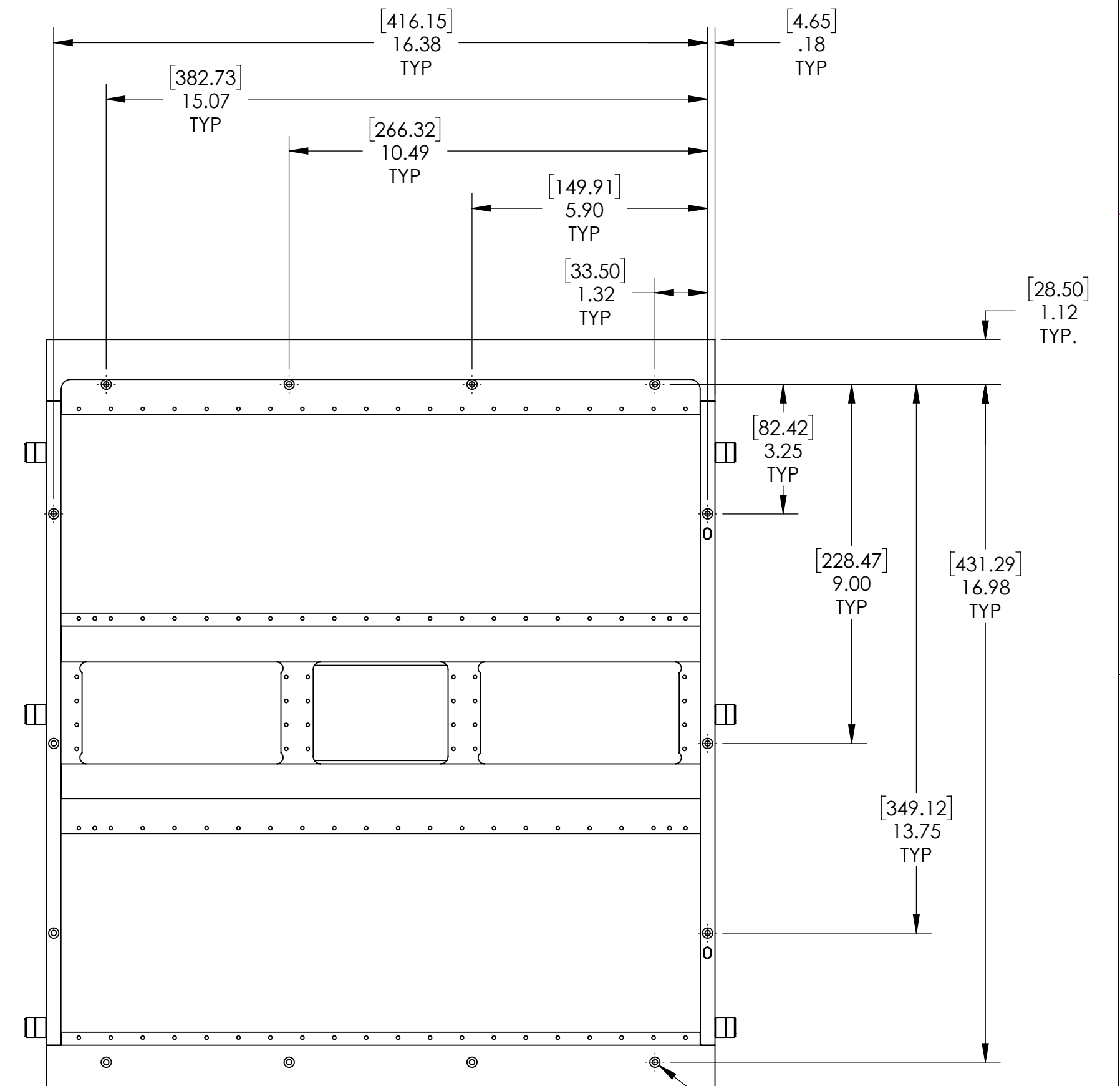
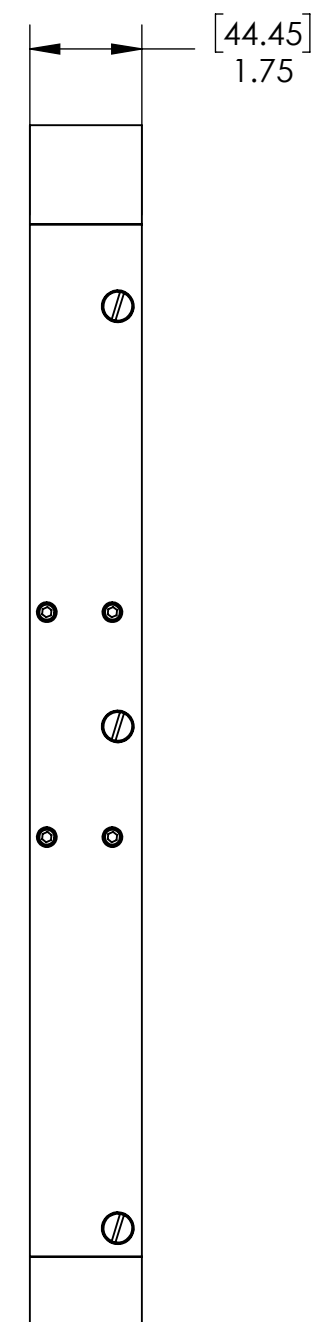
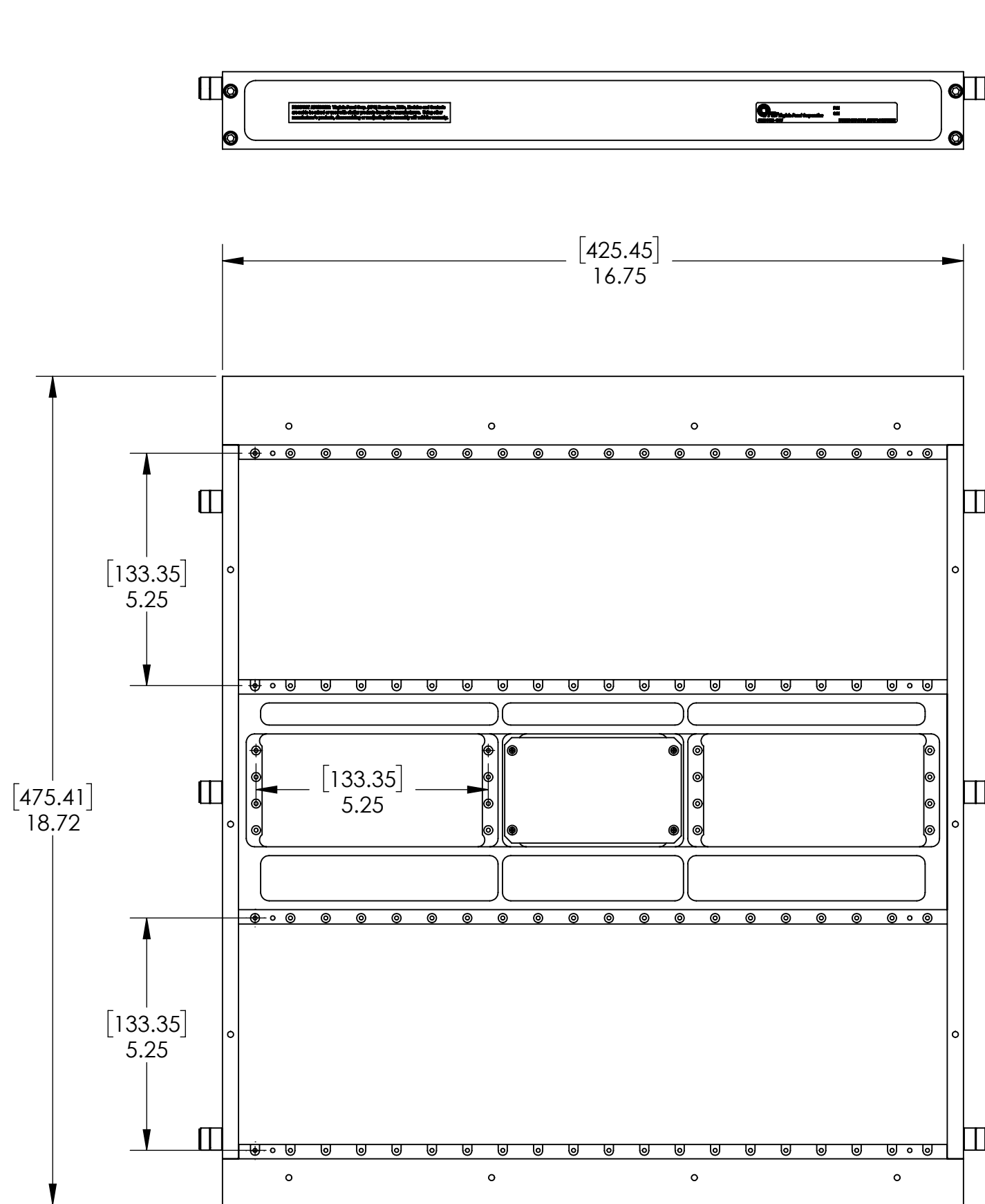
C

B

B

A

A



14X Ø .13 [3.40] THRU ALL

- NOTES:
3. FRAME MATERIAL - CLEAR CHROMATED ALUMINUM ALLOY
HARDWARE - PASSIVATED STAINLESS STEEL
WEIGHT - 12.2 LBS [5.5 KG]
 2. FOR USE WITH RECEIVER 310120163
 1. FOR APPLICATION USE & CARE INFORMATION CONSULT VPC USERS GUIDE @WWW.VPC.COM

RELATIVE CONNECTOR POSITIONS AND WIRE ROUTING ARE GENERIC AND MAY VARY WITH PAYOUT			
DIMENSIONS ARE SHOWN AS:	SIZE	CAGE CODE	DWG. NO.
[MILLIMETERS]	C	18117	410120361
INCHES			
SCALE: 1:3	410120361	3/14/2025	SHEET 1 OF 1

CUSTOMER DRAWING

VIRGINIA PANEL CORPORATION
WWW.VPC.COM

G40X EMI ITA

4

3

2

1