

4

3

2

1

DO NOT SCALE DRAWING

THE INFORMATION CONTAINED HEREIN IS THE EXCLUSIVE PROPERTY OF VIRGINIA PANEL CORPORATION AND IS SUBMITTED FOR USE BY THE CUSTOMER ONLY. THE DATA SHALL NOT BE DUPLICATED, USED, OR DISCLOSED IN WHOLE OR IN PART FOR ANY PURPOSE OTHER THAN TO MAINTAIN THE EQUIPMENT PROVIDED. CONSULT WITH VIRGINIA PANEL CORPORATION ENGINEERING IF MORE DETAIL IS REQUIRED.

## REVISIONS

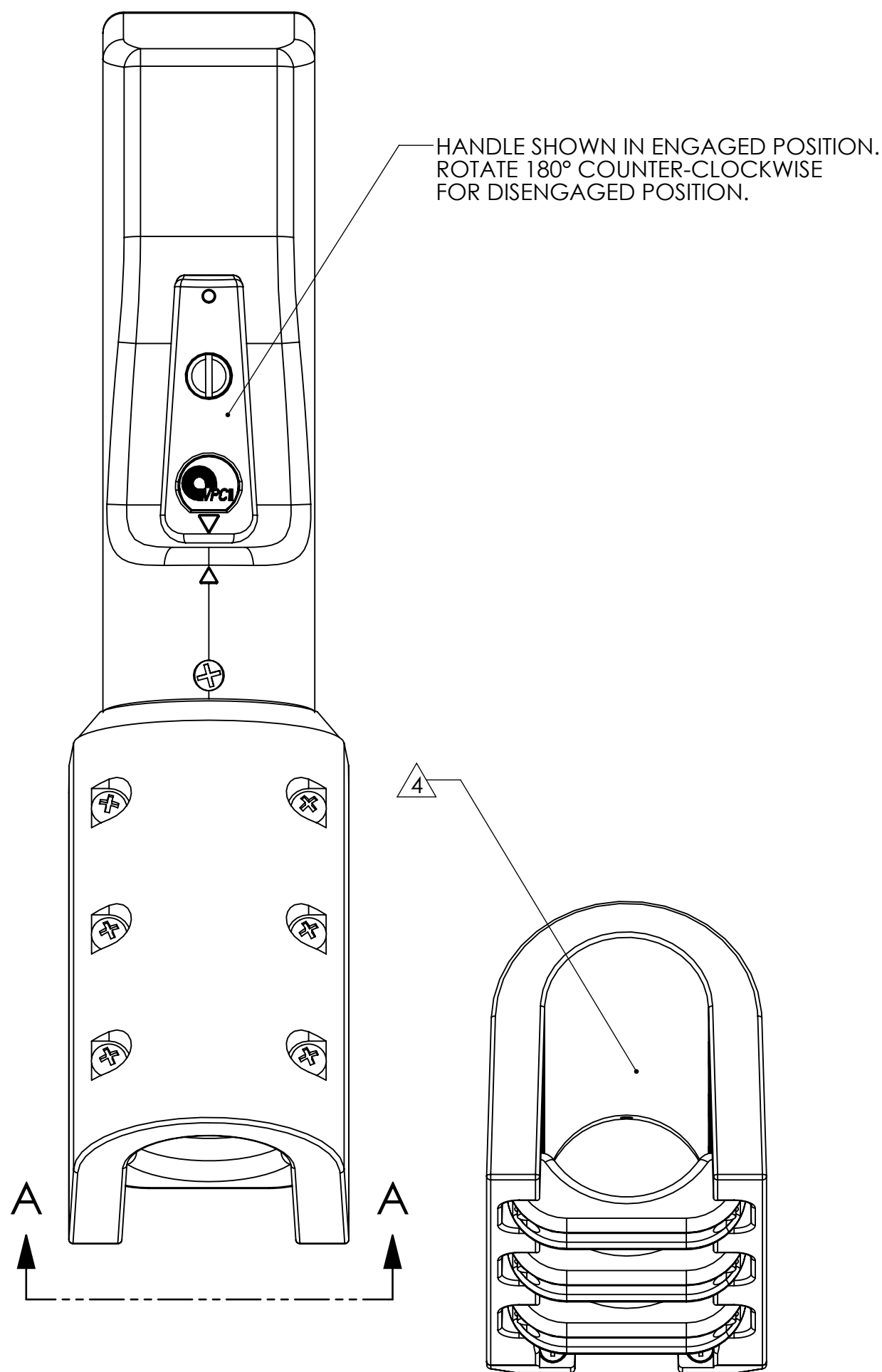
REV	DESCRIPTION	DATE	ENGR
F	ECN #8972	3/20/19	R HERRON

D

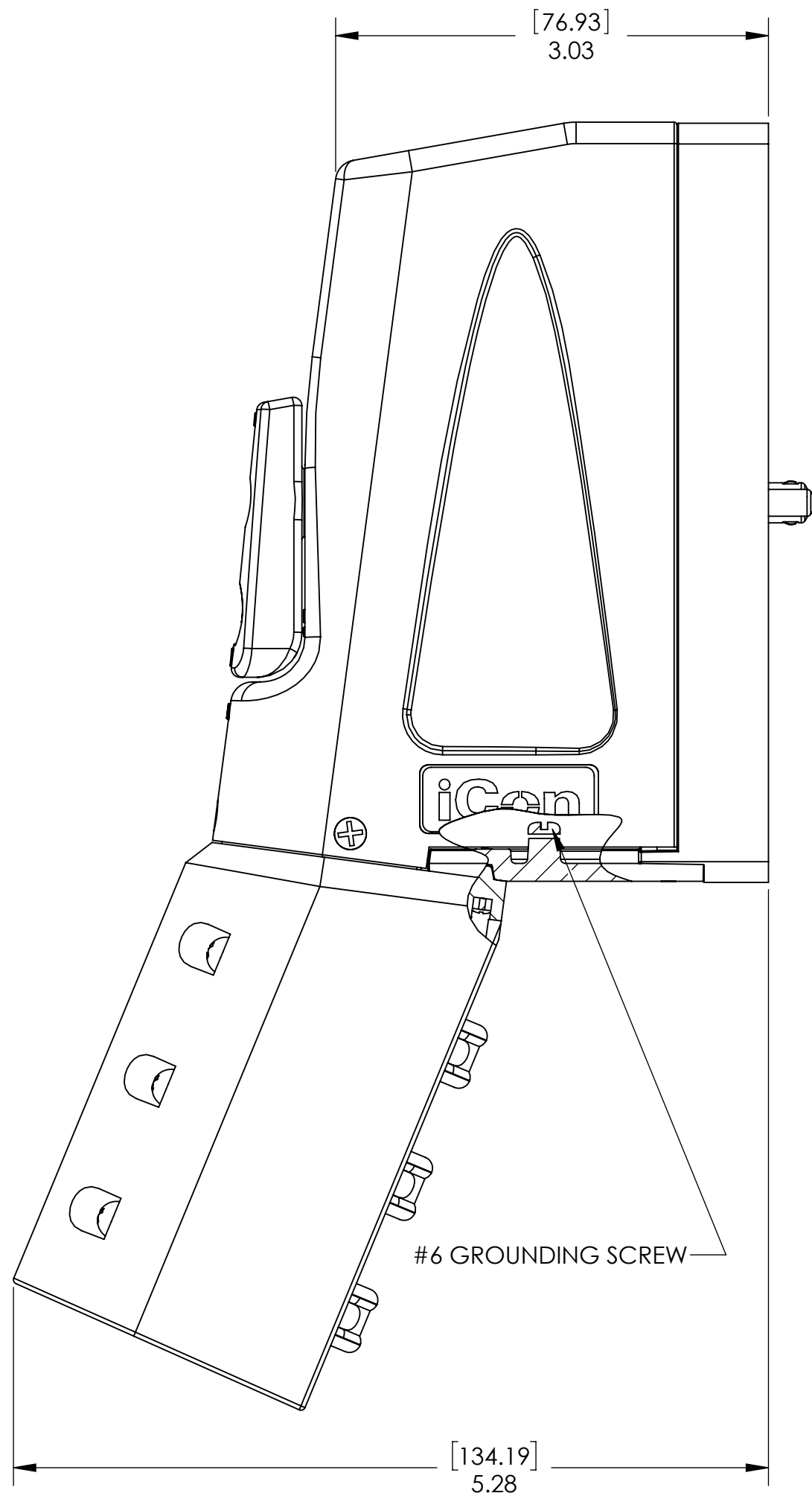
C

B

A



SECTION A-A



HEX CAVITY 2X FOR  
OPTIONAL KEYING PINS  
(KIT P/N 310113461)

MODULE  
TIER "A"

MODULE  
TIER "B"

[228.83]  
9.01

RCV MATING VIEW

D

C

B

A

5. MAXIMUM CONTACT MATING FORCE SHOULD NOT EXCEED 100 LBS [444.8 N]

4 MAX CABLE BUNDLE AREA = 1.97 SQ. IN. OR A 1.58"/40.13mm DIAMETER BUNDLE CLAMP CAN BE INVERTED FOR SMALLER CABLE BUNDLES

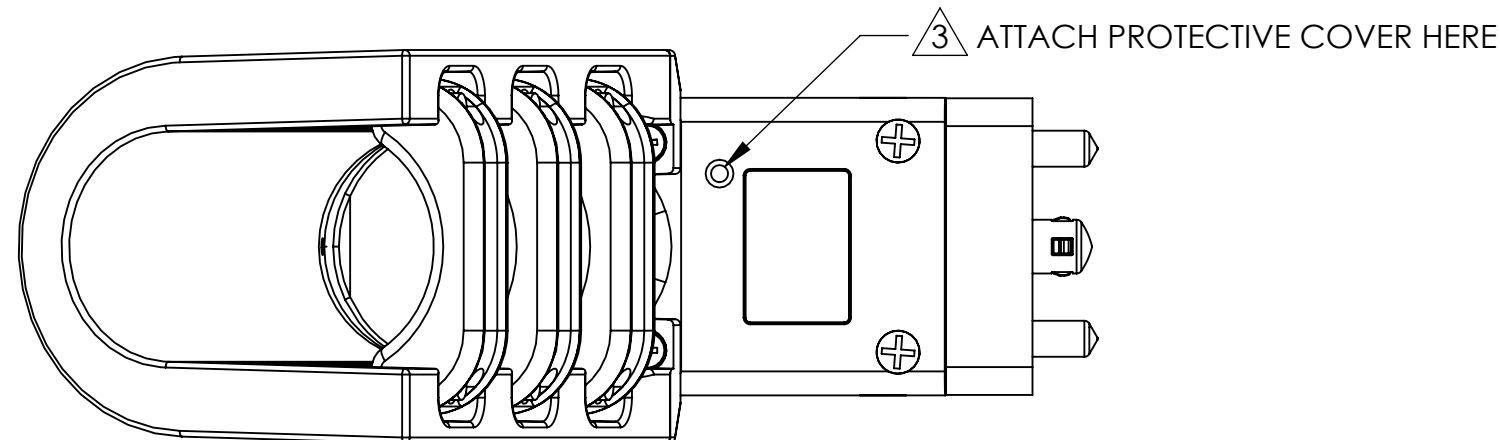
3 PROTECTIVE COVER INCLUDED WITH ASSEMBLY (NOT SHOWN)

## 2. MATERIALS:

FRAME: ALUMINUM ALLOY - NI PLATED  
HARDWARE: STAINLESS STEEL ALLOY  
DRIVE UNIT: BRONZE ALLOY & STAINLESS STEEL ALLOY  
PLASTIC COMPONENTS & PROTECTIVE COVER: BLACK THERMOPLASTIC  
CABLE CLAMP HOUSING: ANODIZED ALUMINUM ALLOY  
CABLE CLAMP: ALUMINUM ALLOY, POWDER COATED

1. FOR APPLICATION USE & CARE INFORMATION CONSULT VPC USERS GUIDE @WWW.VPC.COM

NOTES:



DIMENSIONS ARE SHOWN AS:  
[MILLIMETERS]  
INCHES

SIZE	CAGE CODE	DWG. NO.	REV
C	18117	410123115	F
SCALE: 1:1	410123115	9/15/09	SHEET 1 OF 1

## CUSTOMER DRAWING

VIRGINIA PANEL CORPORATION  
WWW.VPC.COM

ITA, ICON,  
EXTENDED CLAMP

4

3

2

1