

4

3

2

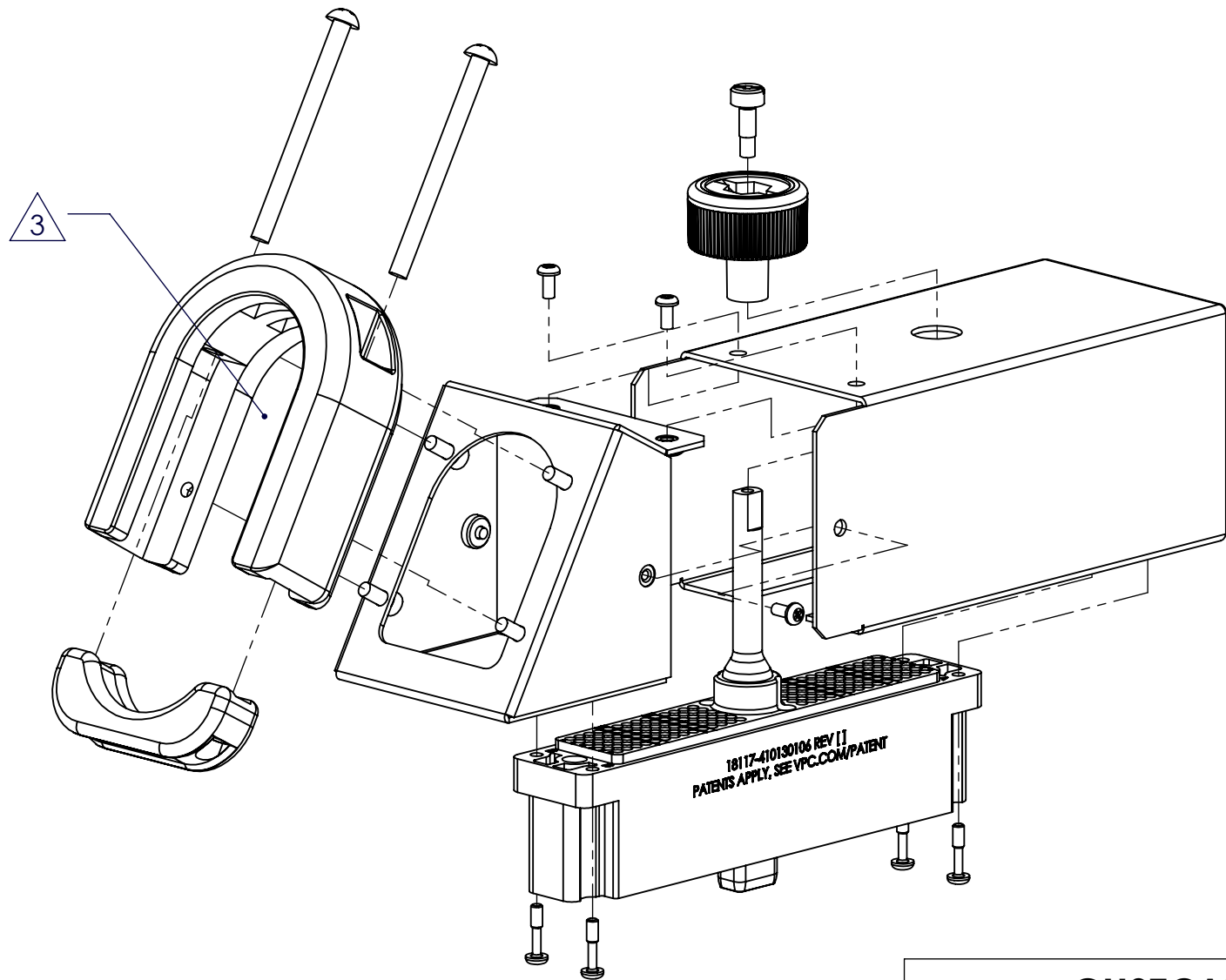
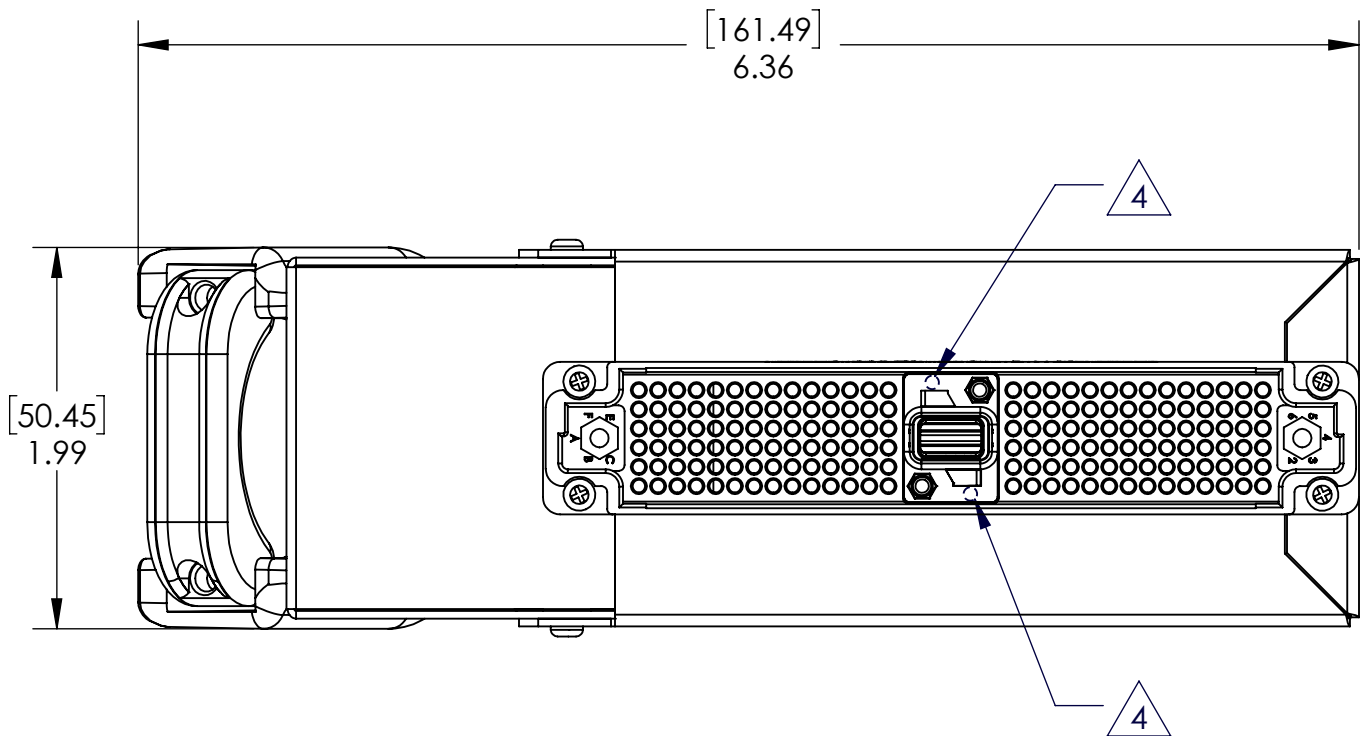
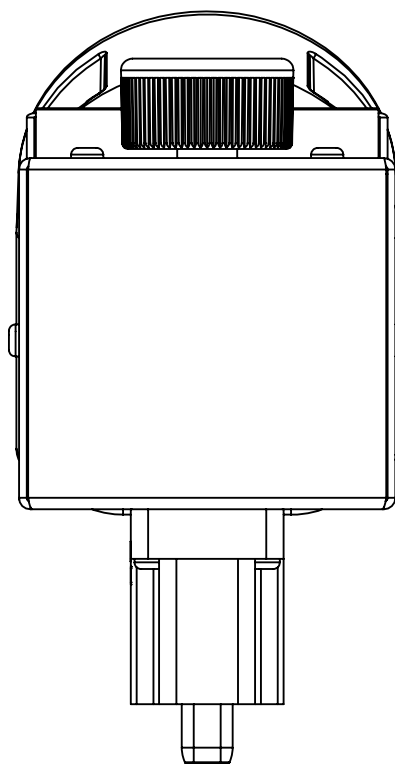
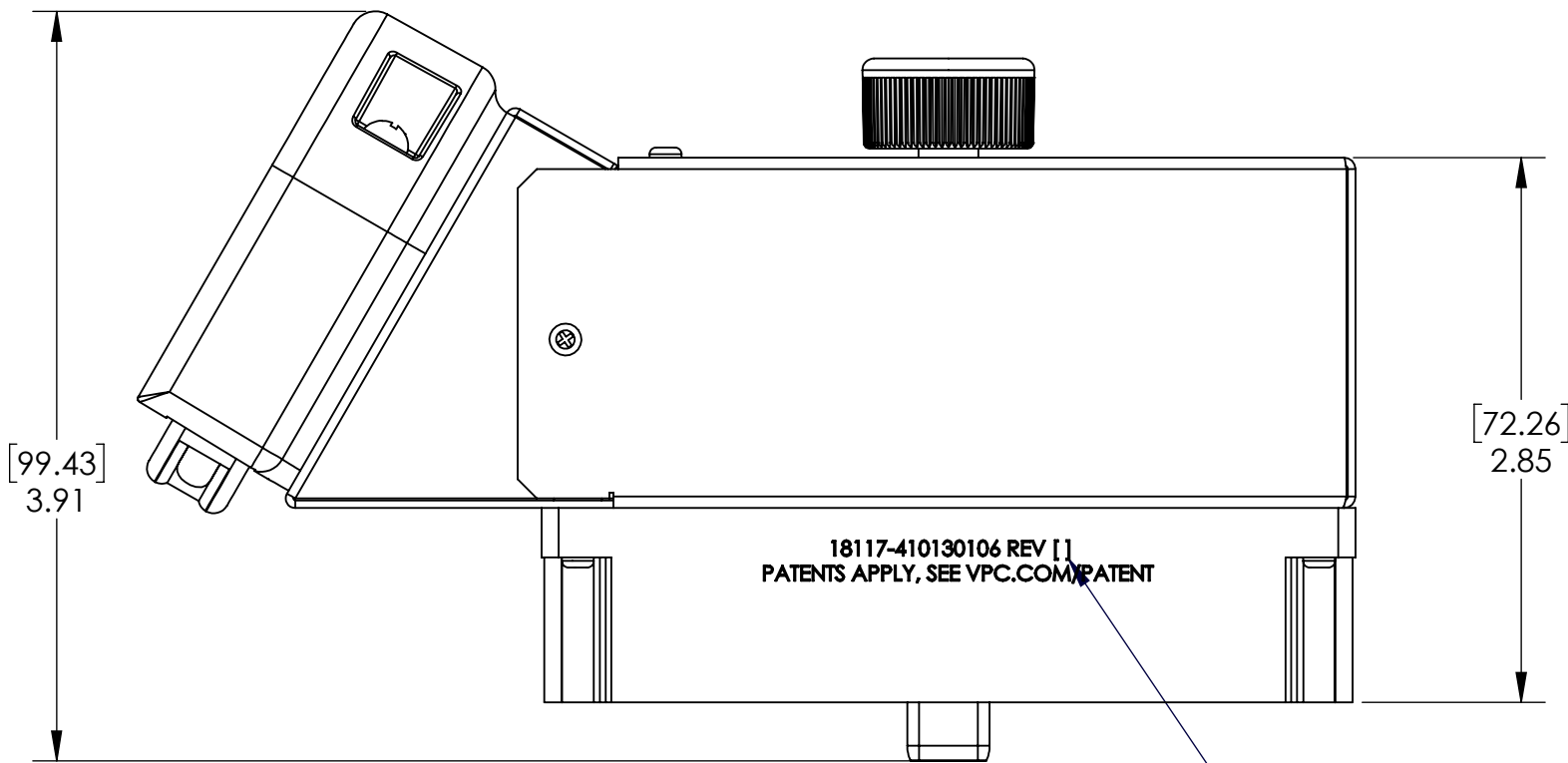
1

DO NOT SCALE DRAWING

THE INFORMATION CONTAINED HEREIN IS THE EXCLUSIVE PROPERTY OF VIRGINIA PANEL CORPORATION AND IS SUBMITTED FOR USE BY THE CUSTOMER ONLY. THE DATA SHALL NOT BE DUPLICATED, USED, OR DISCLOSED IN WHOLE OR IN PART FOR ANY PURPOSE OTHER THAN TO MAINTAIN THE EQUIPMENT PROVIDED. CONSULT WITH VIRGINIA PANEL CORPORATION ENGINEERING IF MORE DETAIL IS REQUIRED.

REVISIONS

REV	DESCRIPTION	DATE	ENGR
F	ECN # 12628	6/9/22	M ECKERT



- 5 [] REPRESENTS CURRENT REVISION LEVEL
4 APPROXIMATE LOCATIONS FOR PIECE PART MOLD CAVITY IDENTIFIER
3 MAX CABLE BUNDLE EFFECTIVE DIAMETER = 1.80"
CLAMP CAN BE INVERTED FOR SMALLER CABLE BUNDLES
2. MATERIALS
BACK SHELL AND CABLE CLAMP - ALUMINUM ALLOW
MODULE, CABLE BUSHING AND HANDLE - REINFORCED THERMOPLASTIC
DRIVE SYSTEM - HEAT TREATED BeCu AND BRASS, NI PLATED
HARDWARE - STAINLESS STEEL

CUSTOMER DRAWING

VPC

i2 Micro iCon, ITA, 168 Pos,
Oversized Backshell & Clamp

DIMENSIONS ARE SHOWN AS:	SIZE	CAGE CODE	DWG.NO.	REV
[MILLIMETERS]	C	18117	410130106	F
INCHES	SCALE: 1:1	410130106	7/11/11	SHEET 1 OF 1