

4

3

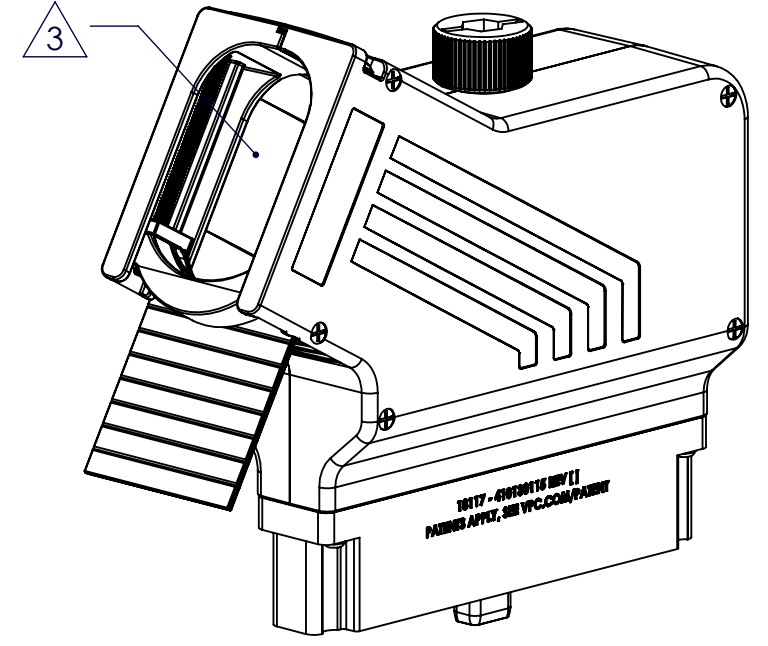
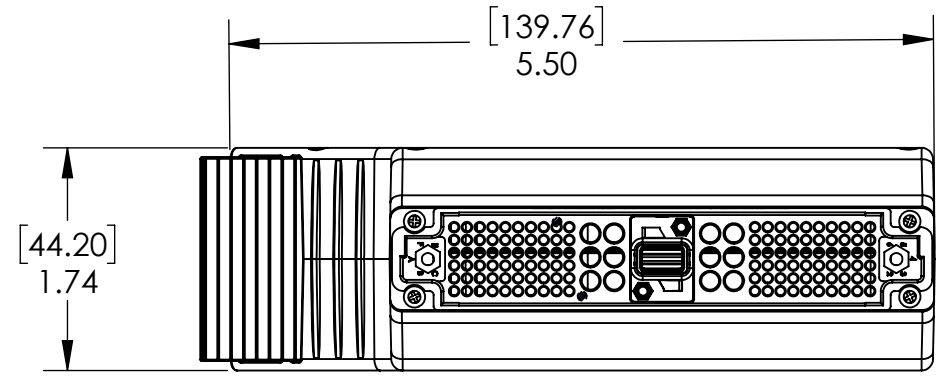
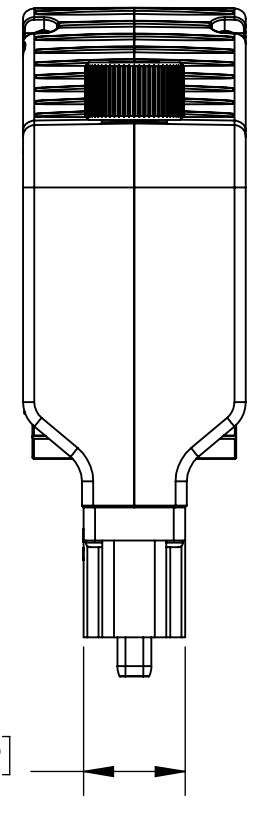
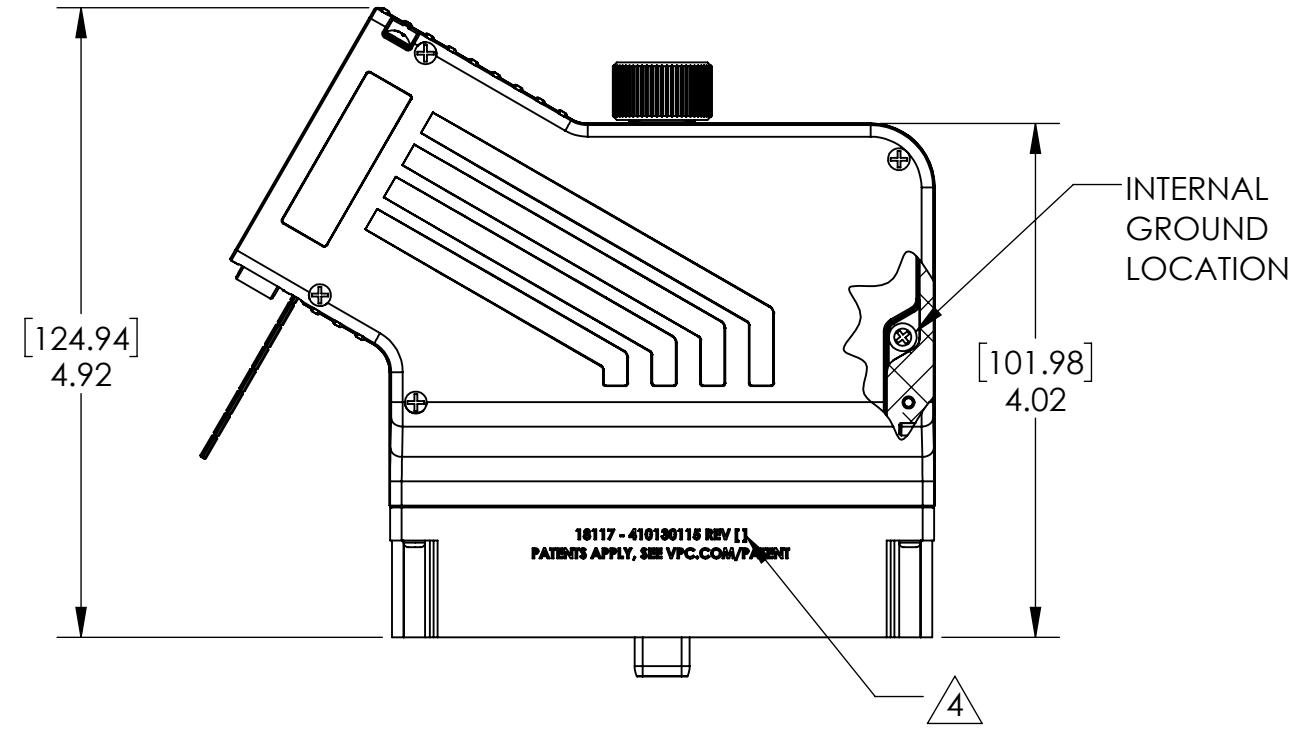
2

1

DO NOT SCALE DRAWING

THE INFORMATION CONTAINED HEREIN IS THE EXCLUSIVE PROPERTY OF VPC AND IS PERMITTED FOR USE BY THE CUSTOMER ONLY. THE DATA SHALL NOT BE DUPLICATED, USED, OR DISCLOSED IN WHOLE OR IN PART FOR ANY PURPOSE OTHER THAN TO MAINTAIN THE EQUIPMENT PROVIDED.

REV	DESCRIPTION	DATE	ENGINEER
D	ECN #14316	7/1/24	R HERRON



- 4 [ ] REPRESENTS CURRENT REVISION LEVEL
- 3 MAX CABLE BUNDLE EFFECTIVE DIAMETER = 1.67"  
CLAMP CAN BE INVERTED FOR SMALLER CABLE BUNDLES

2. MATERIALS  
 BACKSHELL AND CABLE CLAMP - ALUMINUM ALLOY  
 MODULE AND DUST SHIELD - REINFORCED THERMOPLASTIC  
 DRIVE SYSTEM - HEAT TREATED BeCu, BRASS AND ZINC ALLOY, Ni PLATED  
 HARDWARE - STAINLESS STEEL

1. FOR MORE INFORMATION, VISIT VPC.COM.  
 NOTES:

RELATIVE CONNECTOR POSITIONS AND WIRE ROUTING ARE GENERIC AND MAY VARY WITH PINOUT  
 DIMENSIONS ARE SHOWN AS:  
 [MILLIMETERS]  
 INCHES

**CUSTOMER DRAWING**

VPC Virginia Panel Corporation

ITA, i2 Micro iCon,  
 120/12 Position Hybrid,  
 with Oversized Backshell

DWG. NO.	410130115	REV	D
SCALE	CAGE CODE	SHEET	
NONE	18117	1 OF 1	

4

3

2

1