

4

3

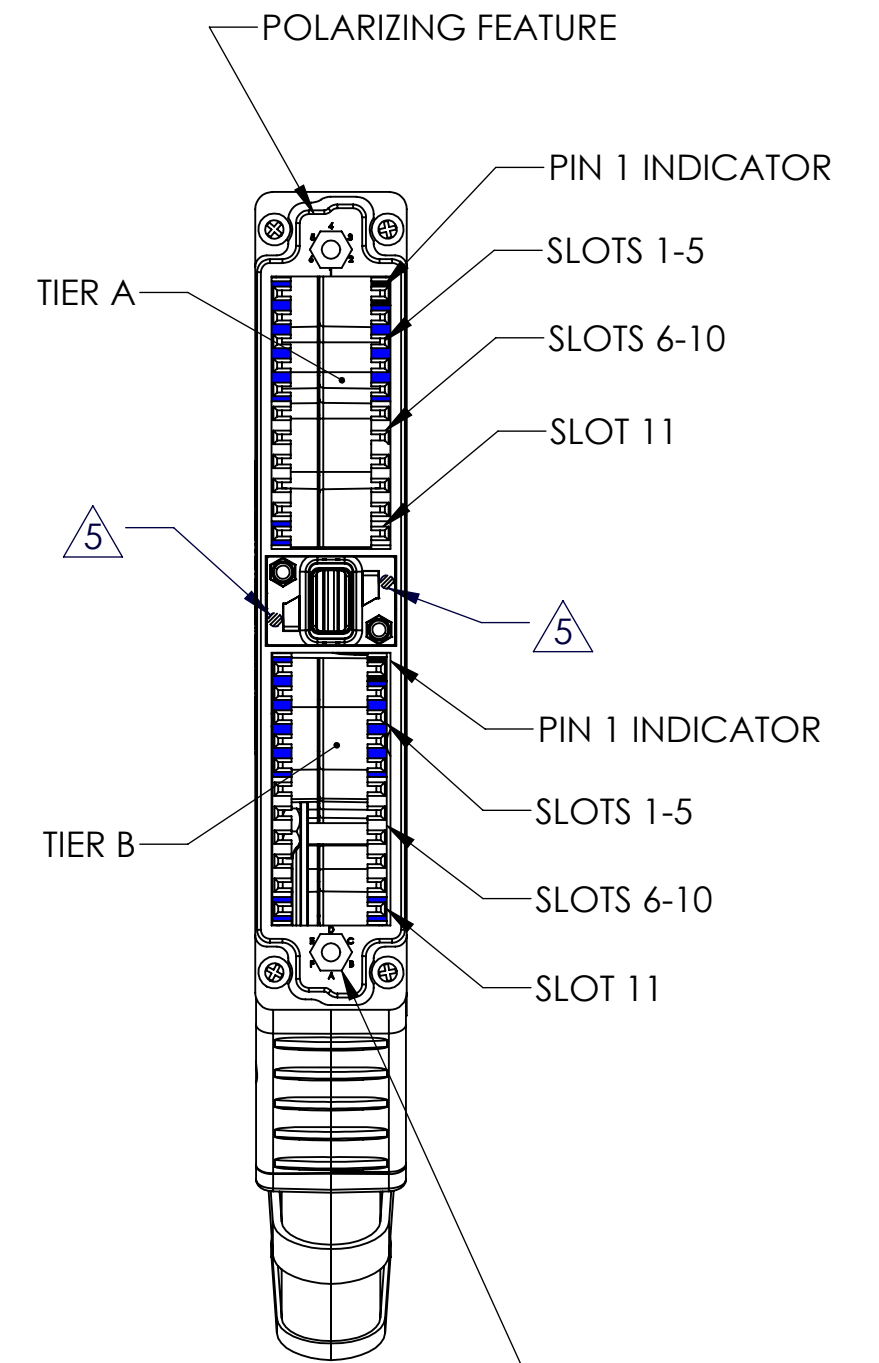
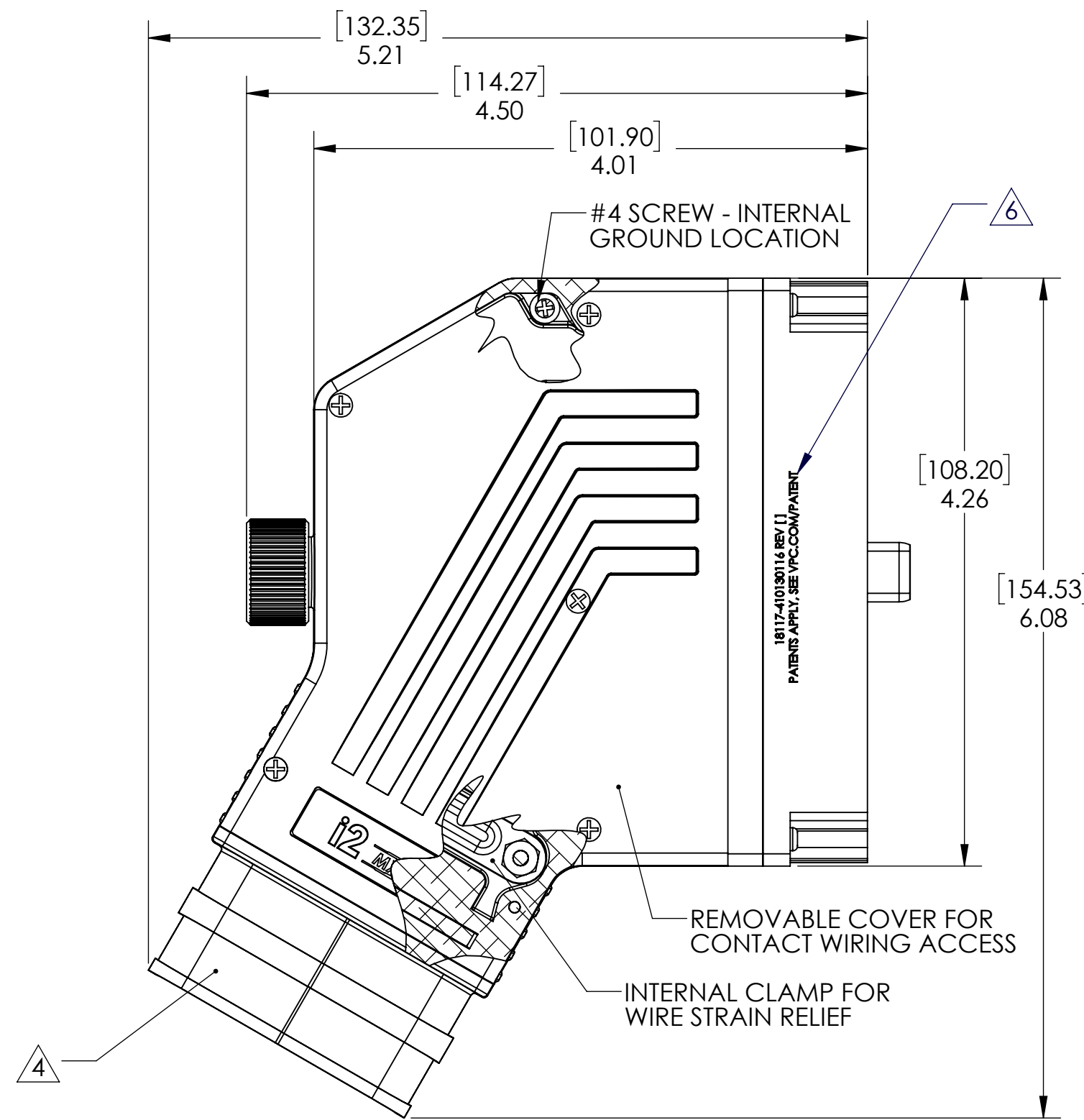
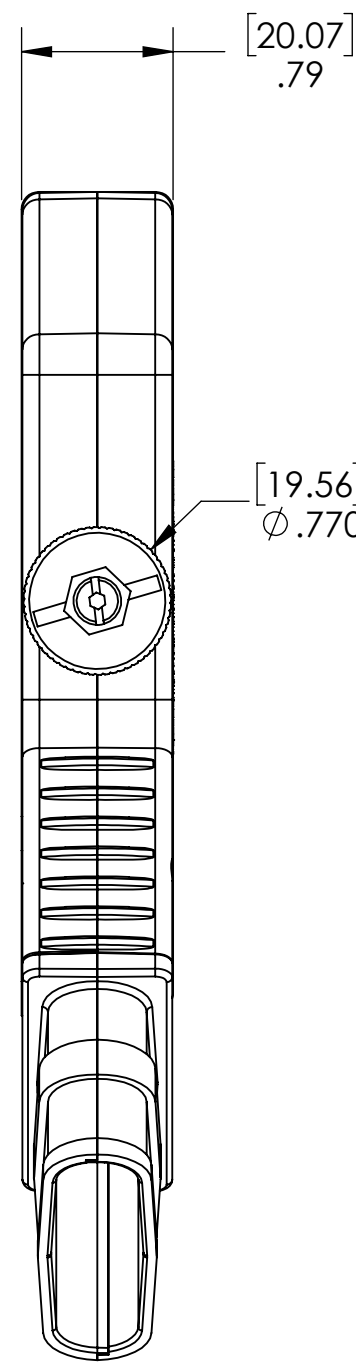
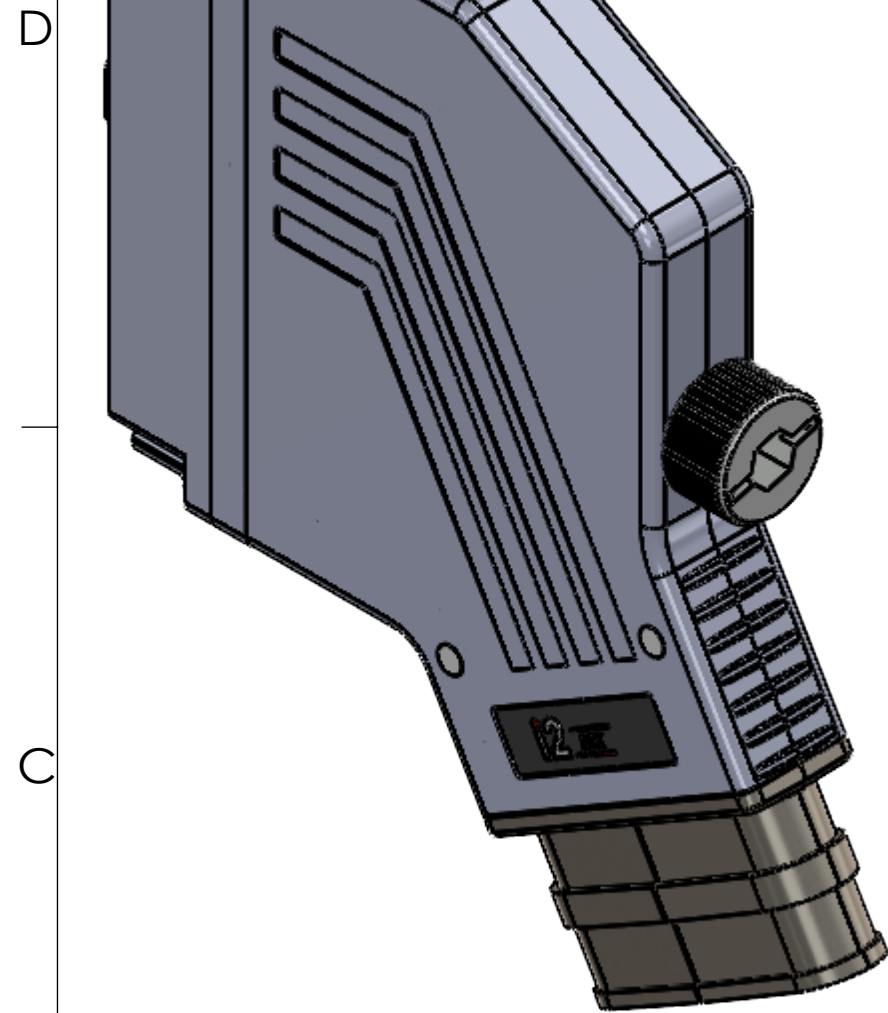
2

1

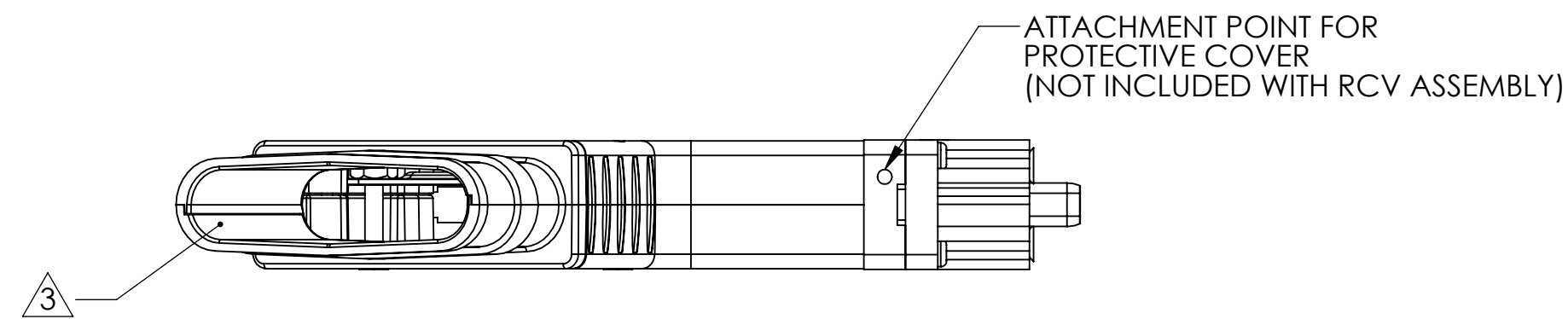
DO NOT SCALE DRAWING

THE INFORMATION CONTAINED HEREIN IS THE EXCLUSIVE PROPERTY OF VIRGINIA PANEL CORPORATION AND IS SUBMITTED FOR USE BY THE CUSTOMER ONLY. THE DATA SHALL NOT BE DUPLICATED, USED, OR DISCLOSED IN WHOLE OR IN PART FOR ANY PURPOSE OTHER THAN TO MAINTAIN THE EQUIPMENT PROVIDED. CONSULT WITH VIRGINIA PANEL CORPORATION ENGINEERING IF MORE DETAIL IS REQUIRED.

REVISIONS			
REV	DESCRIPTION	DATE	ENGR
G	ECN #12534	4/28/22	M ECKERT



CAVITY FOR KEYING KIT, TYP. 2 PLCS.  
ACCESSORY P/N 310113461 (2 KEYS PER KIT)  
NOT INCLUDED WITH ITA



- 6 [ ] REPRESENTS CURRENT REVISION LEVEL
- 5 APPROXIMATE LOCATIONS FOR PIECE PART MOLD CAVITY IDENTIFIER
- 4 COILED BAND CLAMP FOR SECURING EMI SHIELD BRAID, NOT SHOWN, IS INCLUDED WITH ASSEMBLY.
- 3 MAX CABLE BUNDLE EFFECTIVE DIAMETER = 1.00 IN.

2. MATERIALS:  
 FRAME & DRIVE KNOB: Ni PLATED ZINC  
 BACK SHELL: Ni PLATED ALUMINUM  
 DRIVE SYSTEM: BeCu AND BRONZE, Ni PLATED  
 HARDWARE: STAINLESS STEEL

1. FOR APPLICATION USE & CARE INFORMATION CONSULT VPC USERS GUIDE @WWW.VPC.COM  
 NOTES:

<b>CUSTOMER DRAWING</b>			
<b>VIRGINIA PANEL CORPORATION</b> WWW.VPC.COM			
<b>i2 MX ITA ASSEMBLY</b> <b>HIGH SPEED EMI</b>			
DIMENSIONS ARE SHOWN AS:	SIZE	CAGE CODE	DWG. NO.
[MILLIMETERS]	C	18117	410130116
INCHES			
SCALE:	1:1	410130116	8/1/14 SHEET 1 OF 1

4

3

2

1