

4

3

2

1

DO NOT SCALE DRAWING

THE INFORMATION CONTAINED HEREIN IS THE EXCLUSIVE PROPERTY OF VIRGINIA PANEL CORPORATION AND IS SUBMITTED FOR USE BY THE CUSTOMER ONLY. THE DATA SHALL NOT BE DUPLICATED, USED, OR DISCLOSED IN WHOLE OR IN PART FOR ANY PURPOSE OTHER THAN TO MAINTAIN THE EQUIPMENT PROVIDED. CONSULT WITH VIRGINIA PANEL CORPORATION ENGINEERING IF MORE DETAIL IS REQUIRED.

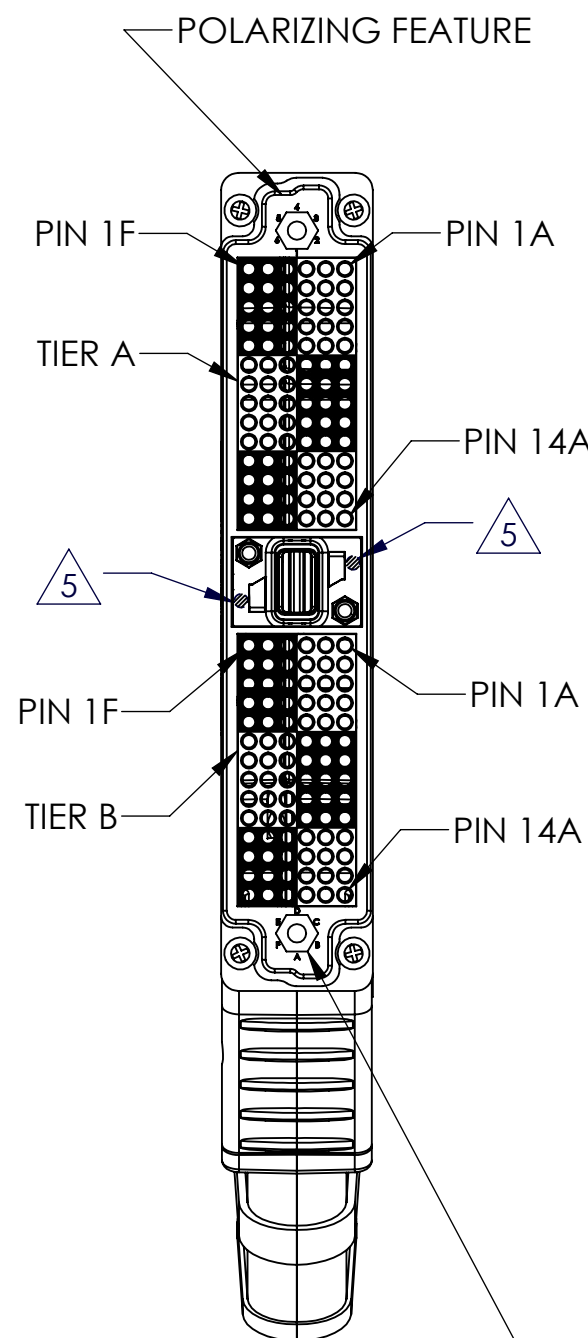
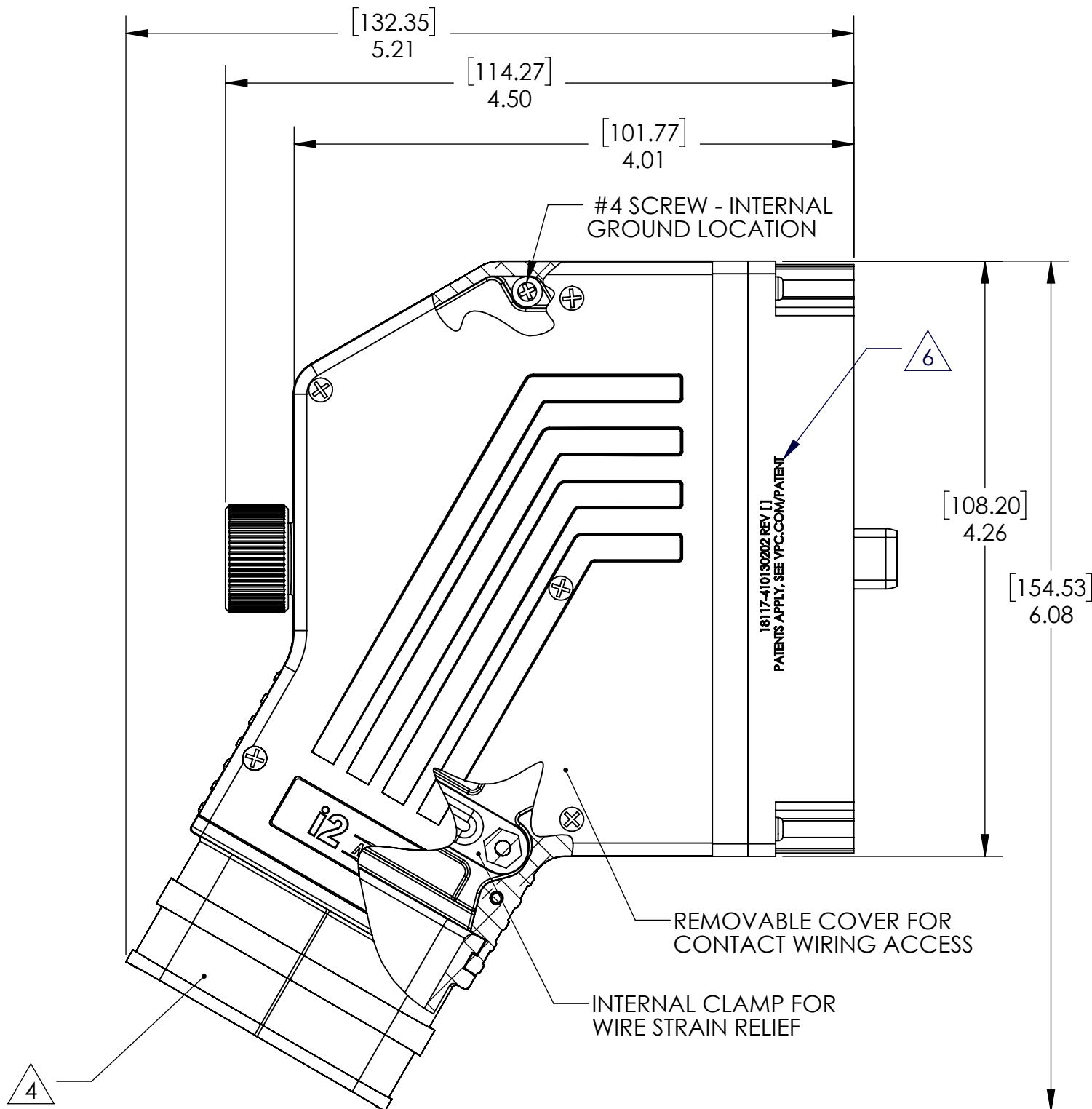
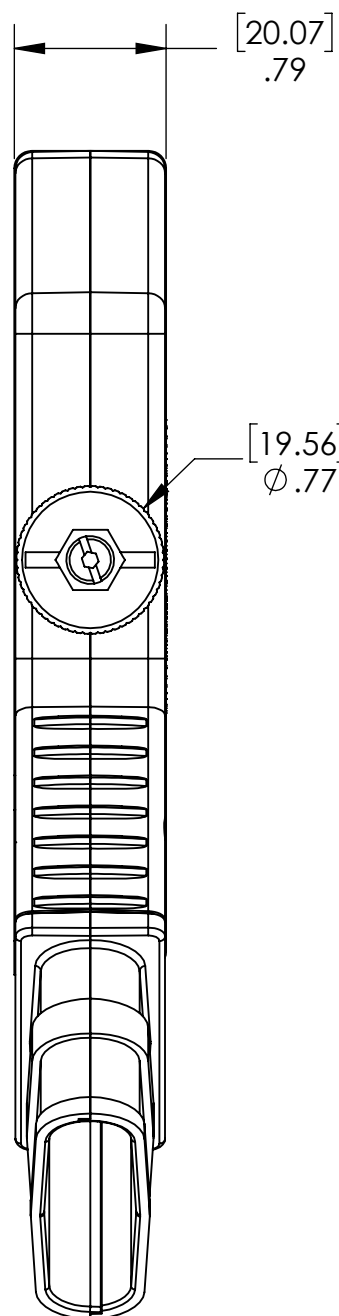
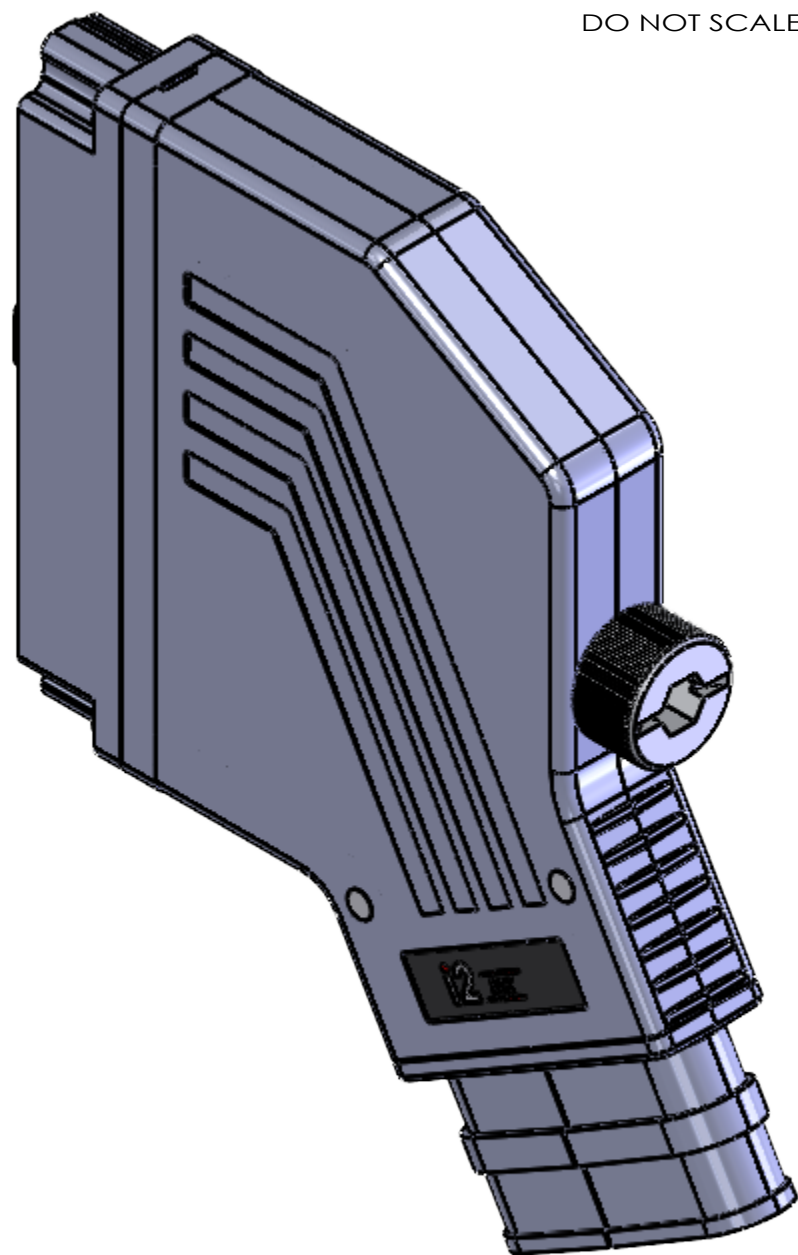
REVISIONS			
REV	DESCRIPTION	DATE	ENGR
K	ECN #12534	4/28/22	M ECKERT

D

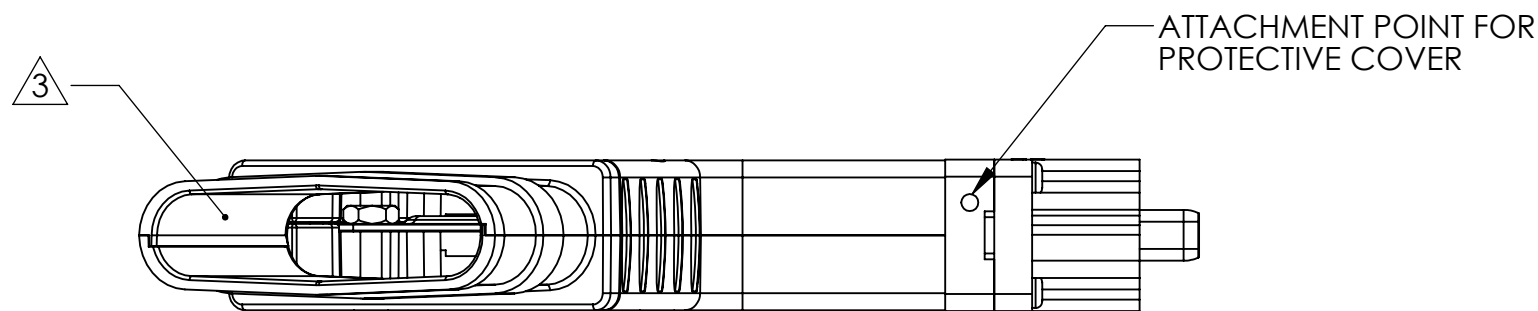
C

B

A



CAVITY FOR KEYING KIT, TYP. 2 PLCS.
ACCESSORY P/N 310113461 (2 KEYS PER KIT)
NOT INCLUDED WITH ITA



- [6] REPRESENTS CURRENT REVISION LEVEL
[5] APPROXIMATE LOCATIONS FOR PIECE PART MOLD CAVITY IDENTIFIER
[4] COILED BAND CLAMP FOR SECURING EMI SHIELD BRAID, NOT SHOWN, IS INCLUDED WITH ASSEMBLY.
[3] MAX CABLE BUNDLE EFFECTIVE DIAMETER = 1.00 IN.

2. MATERIALS:
FRAME & DRIVE KNOB: Ni PLATED ZINC
BACK SHELL: Ni PLATED ALUMINUM
DRIVE SYSTEM: BeCu AND BRONZE, Ni PLATED
HARDWARE: STAINLESS STEEL
INSERTS: BLACK THERMOPLASTIC

1. FOR APPLICATION USE & CARE INFORMATION CONSULT VPC USERS GUIDE @WWW.VPC.COM

NOTES:

RELATIVE CONNECTOR POSITIONS
AND WIRE ROUTING ARE GENERIC
AND MAY VARY WITH PINOUT
DIMENSIONS ARE SHOWN AS:
[MILLIMETERS]
INCHES

CUSTOMER DRAWING			
VIRGINIA PANEL CORPORATION			
WWW.VPC.COM			
i2 MX ITA ASSEMBLY			
EMI W/ 2, 84 POS QPDL			
SIZE C	CAGE CODE 18117	DWG. NO. 410130202	REV K
SCALE: 1:1	410130202	11/21/14	SHEET 1 OF 1

4

3

2

1