

4

3

2

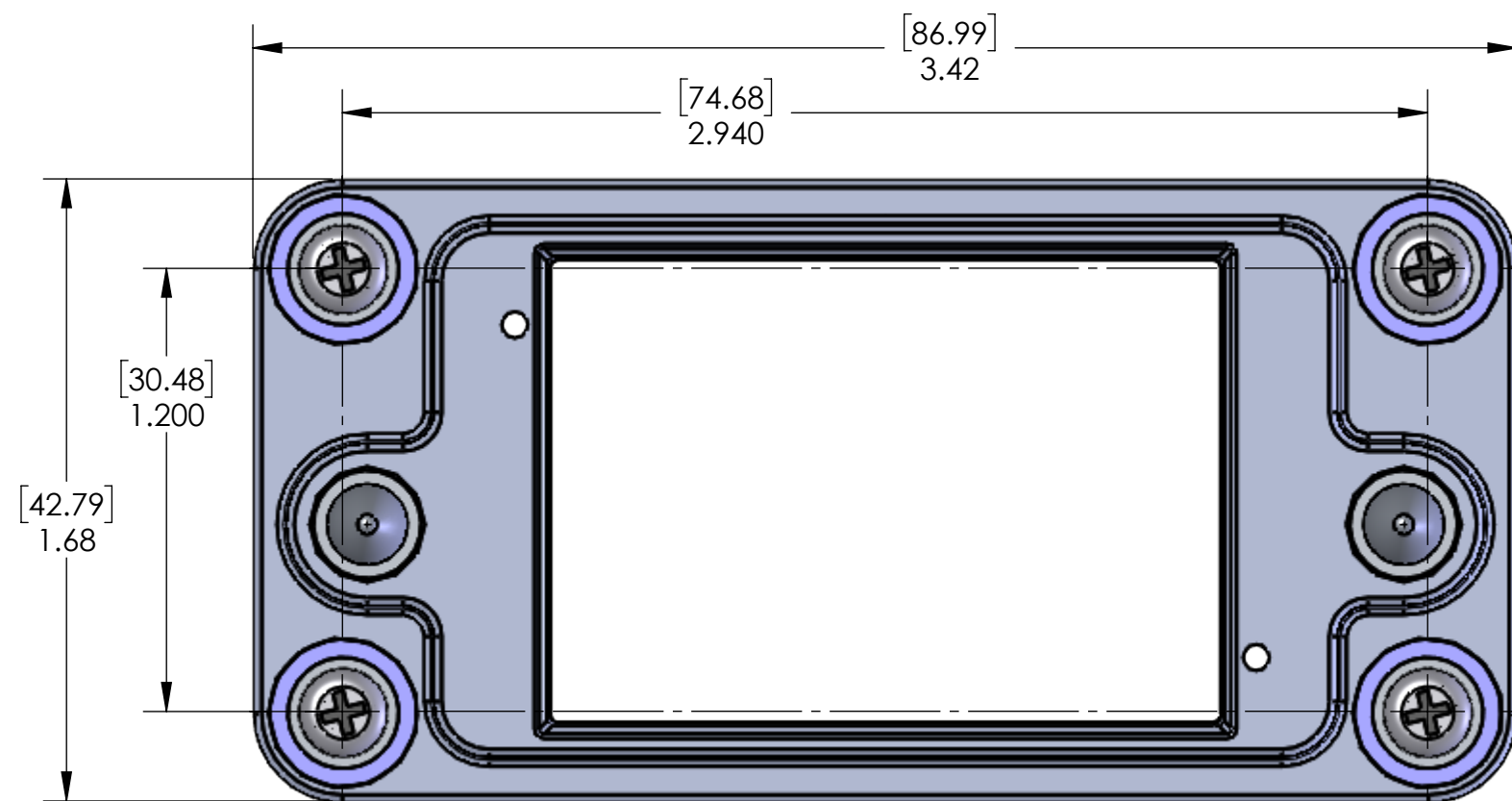
1

DO NOT SCALE DRAWING

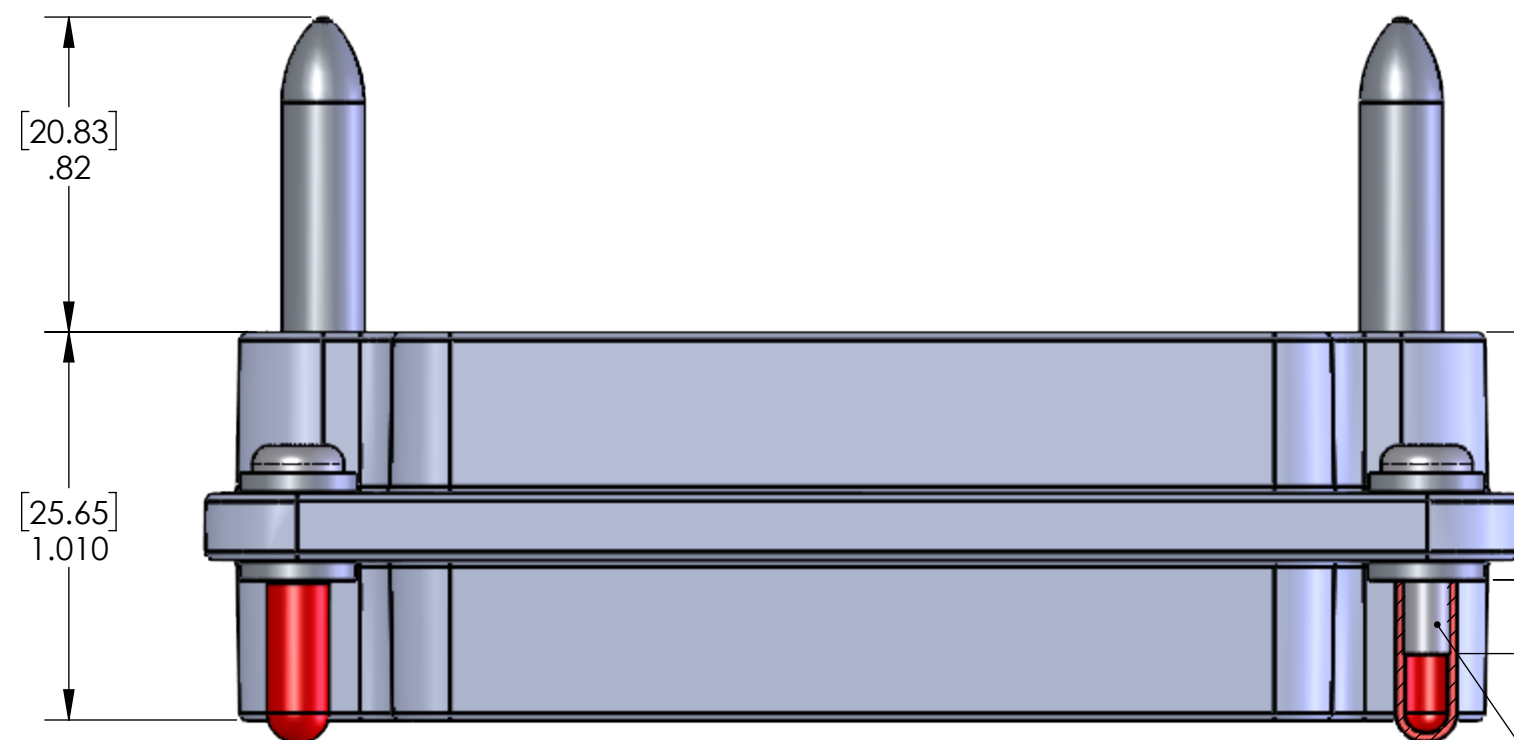
THE INFORMATION CONTAINED HEREIN IS THE EXCLUSIVE PROPERTY OF VIRGINIA PANEL CORPORATION AND IS SUBMITTED FOR USE BY THE CUSTOMER ONLY. THE DATA SHALL NOT BE DUPLICATED, USED, OR DISCLOSED IN WHOLE OR IN PART FOR ANY PURPOSE OTHER THAN TO MAINTAIN THE EQUIPMENT PROVIDED. CONSULT WITH VIRGINIA PANEL CORPORATION ENGINEERING IF MORE DETAIL IS REQUIRED.

REVISIONS

REV	DESCRIPTION	DATE	ENGR
B	ECN #15438	11/19/2025	Z MORRIS

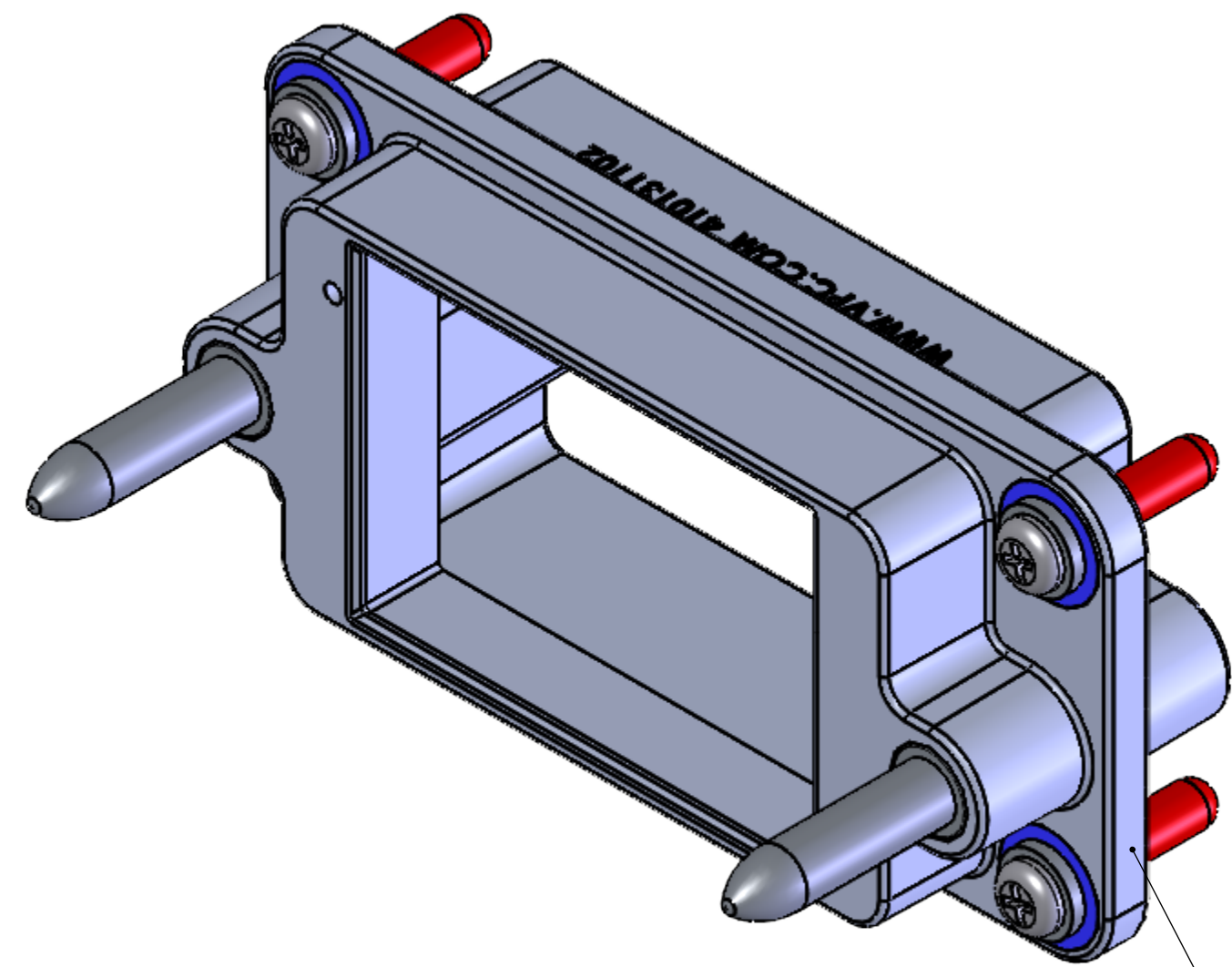


TOP OF FRAME



SCREW PROJECTION

M3 PAN HEAD SCREW



TOP OF FRAME

- 3. ACCEPTABLE TEMPERATURE RANGE -40° TO 80° C.
- 2. FRAME MATERIAL - ALUMINUM, NICKEL PLATED
BUSHING MATERIAL - STAINLESS STEEL, PASSIVATED AND NYLON
HARDWARE - STAINLESS STEEL, PASSIVATED

1. FOR APPLICATION USE & CARE INFORMATION CONSULT VPC USERS GUIDE @WWW.VPC.COM

NOTES:

RELATIVE CONNECTOR POSITIONS AND WIRE ROUTING ARE GENERIC AND MAY VARY WITH PINOUT
DIMENSIONS ARE SHOWN AS:
[MILLIMETERS]
INCHES

CUSTOMER DRAWING			
VIRGINIA PANEL CORPORATION WWW.VPC.COM			
D1 ITA DOCKING CONN			
SIZE C	CAGE CODE 18117	DWG. NO. 410131102	REV B
SCALE: 2:1		SHEET 1 OF 2	

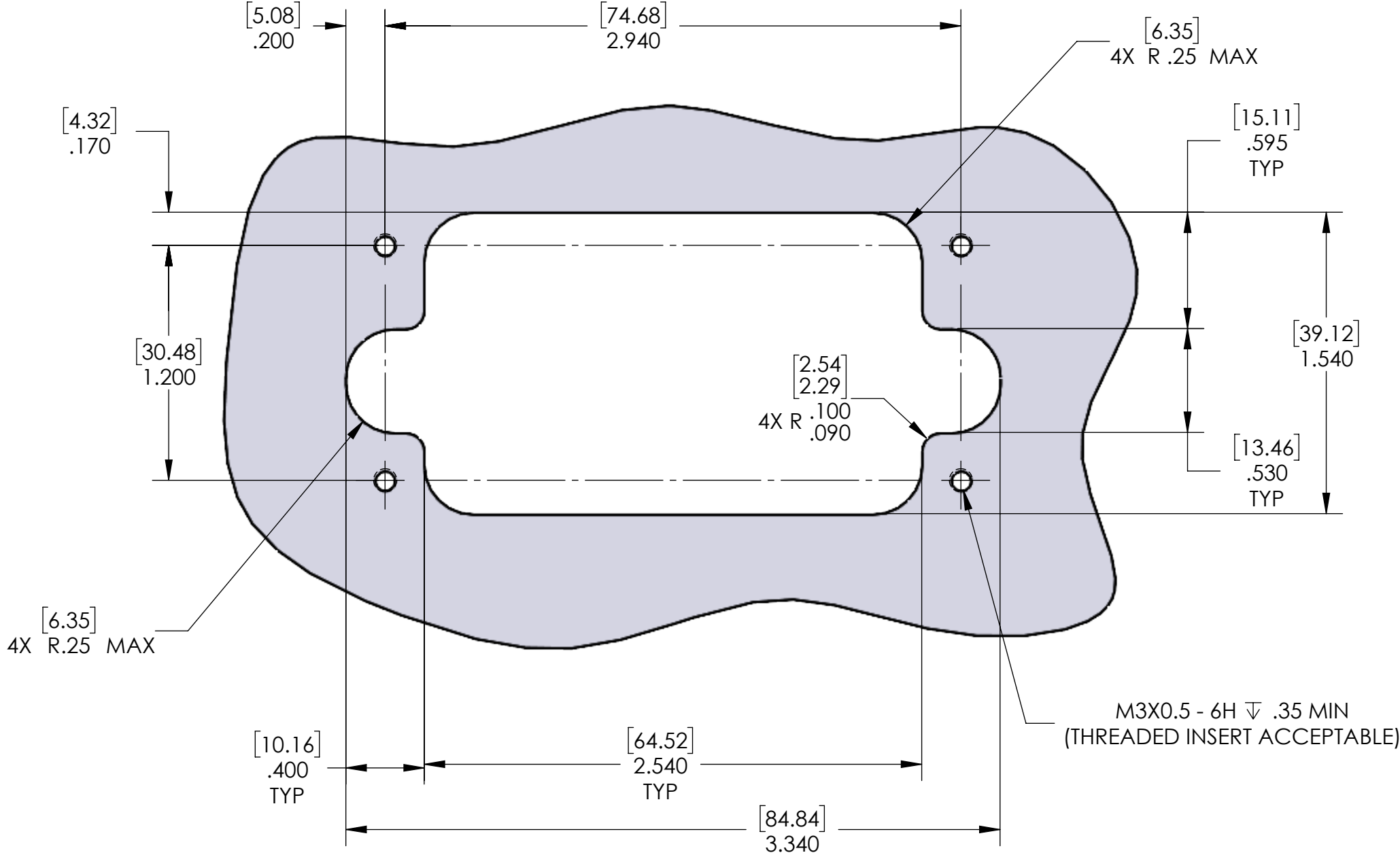
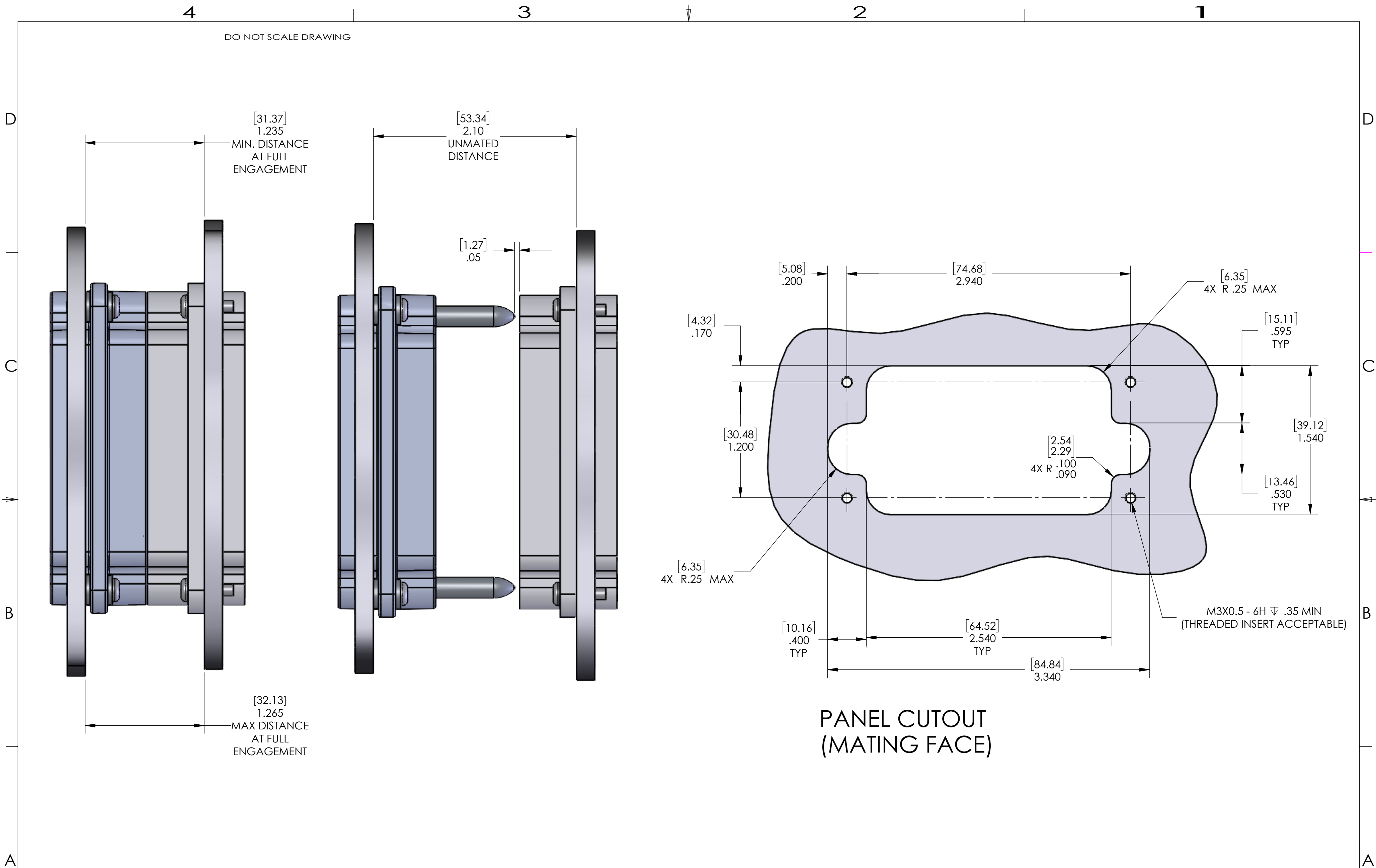
4

3

2

1

DO NOT SCALE DRAWING



PANEL CUTOUT (MATING FACE)

MAX RADIAL MISALIGNMENT WHEN MATING	.020" [.51]
MAX ANGLE DEVIATION AT INITIAL ENGAGEMENT	2°

CUSTOMER DRAWING				
DIMENSIONS ARE SHOWN AS:	SIZE	CAGE CODE	DWG. NO.	REV
[MILLIMETERS]	C	18117	410131102	B
INCHES	SCALE: 3:2	SHEET 2 OF 2		