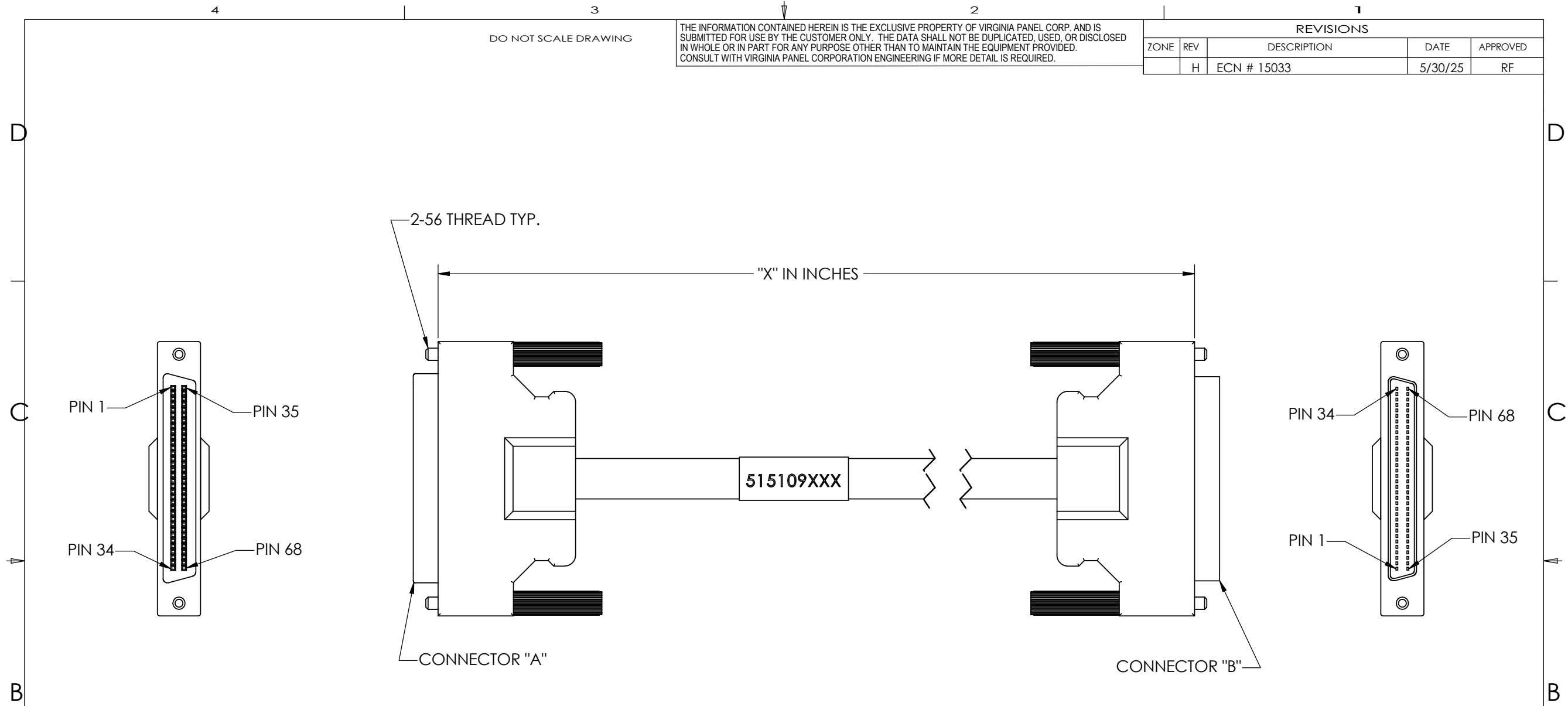


DO NOT SCALE DRAWING

THE INFORMATION CONTAINED HEREIN IS THE EXCLUSIVE PROPERTY OF VIRGINIA PANEL CORP. AND IS SUBMITTED FOR USE BY THE CUSTOMER ONLY. THE DATA SHALL NOT BE DUPLICATED, USED, OR DISCLOSED IN WHOLE OR IN PART FOR ANY PURPOSE OTHER THAN TO MAINTAIN THE EQUIPMENT PROVIDED. CONSULT WITH VIRGINIA PANEL CORPORATION ENGINEERING IF MORE DETAIL IS REQUIRED.

REVISIONS				
ZONE	REV	DESCRIPTION	DATE	APPROVED
	H	ECN # 15033	5/30/25	RF



PART NUMBER	CONN. "A" TYPE	BACKSHELL STYLE	CONN. "B" TYPE	BACKSHELL STYLE	"X" LENGTH
515109122	68 PIN FML SCSI	MALE JACK SCREW	68 PIN ML SCSI	MALE JACK SCREW	36.00
515109125	68 PIN FML SCSI	MALE JACK SCREW	68 PIN ML SCSI	MALE JACK SCREW	20.00
515109139	68 PIN FML SCSI	MALE JACK SCREW	68 PIN ML SCSI	MALE JACK SCREW	60.00
515109256	68 PIN FML SCSI	MALE JACK SCREW	68 PIN ML SCSI	MALE JACK SCREW	120.00

3. BACKSHELLS MAY VARY
2. TECHNICAL DATA:
 WIRE:
 68 CONDUCTOR - 34 TWISTED PAIR 30 AWG WITH OVERALL SHIELDING
 NOMINAL S.E. IMP. (Ohms) = 90
 NOMINAL DIFF. IMP. (Ohms) = 125
 INSULATION = FOAM POLYOLEFIN
 JACKET = BLACK PVC
 MIN. BEND RAD. = 1.5 INCHES
- CONNECTORS:
 CURRENT = 1 AMP @ 30 VAC
 TEMP. = -55° to 105° C
 TERMINATION RESISTANCE = 25 MILLIOHMS
 INSULATION RESISTANCE = 1000 MEGAOHMS
 DWV = 500 VAC
1. FOR APPLICATION, USE & CARE INFORMATION CONSULT VPC USERS GUIDE @WWW.VPC.COM

NOTES:

CUSTOMER DRAWING - CUSTOMER DRAWING					
SOLIDWORKS DRAWING FILE	DIMENSIONS ARE SHOWN AS: (millimeters) INCHES		SIGNATURES		DATE
			DR	R. HERRON	9/3/03
			CHK		
			ENG		
MATERIAL		PROD			VIRGINIA PANEL CORPORATION WWW.VPC.COM
		ASSY			
FINISH		Q A			QP PCB STD CABLE ASSEMBLY
		APPD			SIZE: C FSCM NO. 18117 DWG. NO. 414715161 REV H
					SCALE: NONE 9/3/03 SHEET 1 OF 2

DO NOT SCALE DRAWING

THE INFORMATION CONTAINED HEREIN IS THE EXCLUSIVE PROPERTY OF VIRGINIA PANEL CORP. AND IS SUBMITTED FOR USE BY THE CUSTOMER ONLY. THE DATA SHALL NOT BE DUPLICATED, USED, OR DISCLOSED IN WHOLE OR IN PART FOR ANY PURPOSE OTHER THAN TO MAINTAIN THE EQUIPMENT PROVIDED. CONSULT WITH VIRGINIA PANEL CORPORATION ENGINEERING IF MORE DETAIL IS REQUIRED.

REVISIONS				
ZONE	REV	DESCRIPTION	DATE	APPROVED
	H	ECN # 15033	5/30/25	RF

WIRE CHART

CONNECTOR		
A	B	
1	1	TWISTED PAIR #1
2	2	
3	3	TWISTED PAIR #2
4	4	
5	5	TWISTED PAIR #3
6	6	
7	7	TWISTED PAIR #4
8	8	
9	9	TWISTED PAIR #5
10	10	
11	11	TWISTED PAIR #6
12	12	
13	13	TWISTED PAIR #7
14	14	
15	15	TWISTED PAIR #8
16	16	
17	17	TWISTED PAIR #9
18	18	
19	19	TWISTED PAIR #10
20	20	
21	21	TWISTED PAIR #11
22	22	
23	23	TWISTED PAIR #12
24	24	

CONNECTOR		
A	B	
25	25	TWISTED PAIR #13
26	26	
27	27	TWISTED PAIR #14
28	28	
29	29	TWISTED PAIR #15
30	30	
31	31	TWISTED PAIR #16
32	32	
33	33	TWISTED PAIR #17
34	34	
35	35	TWISTED PAIR #18
36	36	
37	37	TWISTED PAIR #19
38	38	
39	39	TWISTED PAIR #20
40	40	
41	41	TWISTED PAIR #21
42	42	
43	43	TWISTED PAIR #22
44	44	
45	45	TWISTED PAIR #23
46	46	
47	47	TWISTED PAIR #24
48	48	

CONNECTOR		
A	B	
49	49	TWISTED PAIR #25
50	50	
51	51	TWISTED PAIR #26
52	52	
53	53	TWISTED PAIR #27
54	54	
55	55	TWISTED PAIR #28
56	56	
57	57	TWISTED PAIR #29
58	58	
59	59	TWISTED PAIR #30
60	60	
61	61	TWISTED PAIR #31
62	62	
63	63	TWISTED PAIR #32
64	64	
65	65	TWISTED PAIR #33
66	66	
67	67	TWISTED PAIR #34
68	68	

1 FOR APPLICATION, USE & CARE INFORMATION
CONSULT VPC USERS GUIDE @WWW.VPC.COM

NOTES:

CUSTOMER DRAWING - CUSTOMER DRAWING									
SOLIDWORKS DRAWING FILE	DIMENSIONS ARE SHOWN AS:		SIGNATURES		DATE	VIRGINIA PANEL CORPORATION WWW.VPC.COM			
	(millimeters)		DR	R. HERRON	9/3/03				
	INCHES		CHK			QP PCB STD CABLE ASSEMBLY			
	REMOVE BURRS. BREAK SHARP EDGES		ENG						
	MATERIAL		PROD			SIZE	FSCM NO.	DWG. NO.	REV
FINISH		Q A			C	18117	414715161	H	
		APPD			SCALE: NONE	9/3/03	SHEET 2 OF 2		