

4

3

2

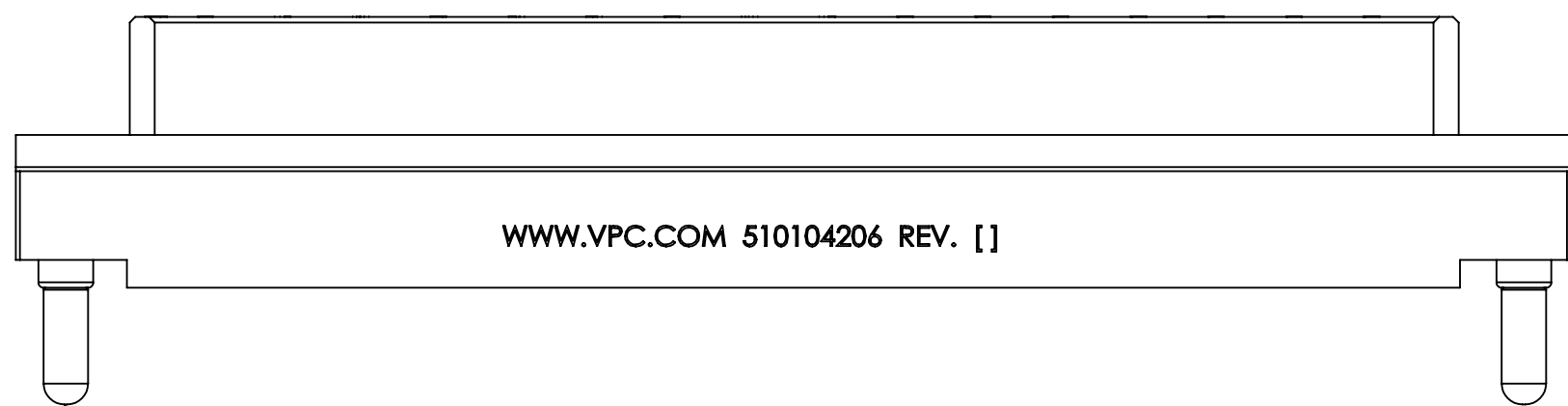
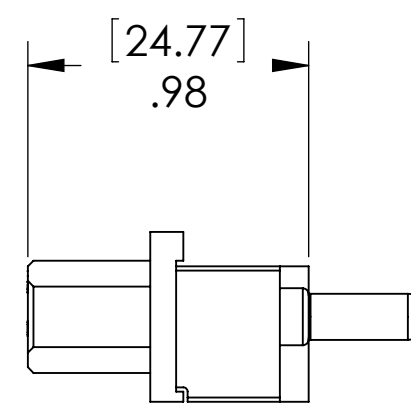
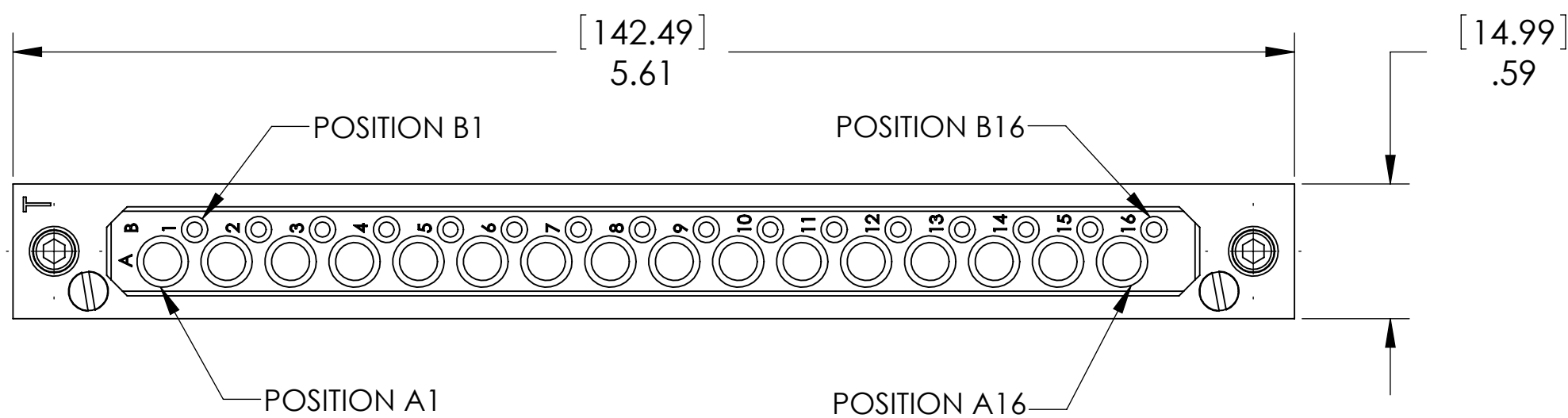
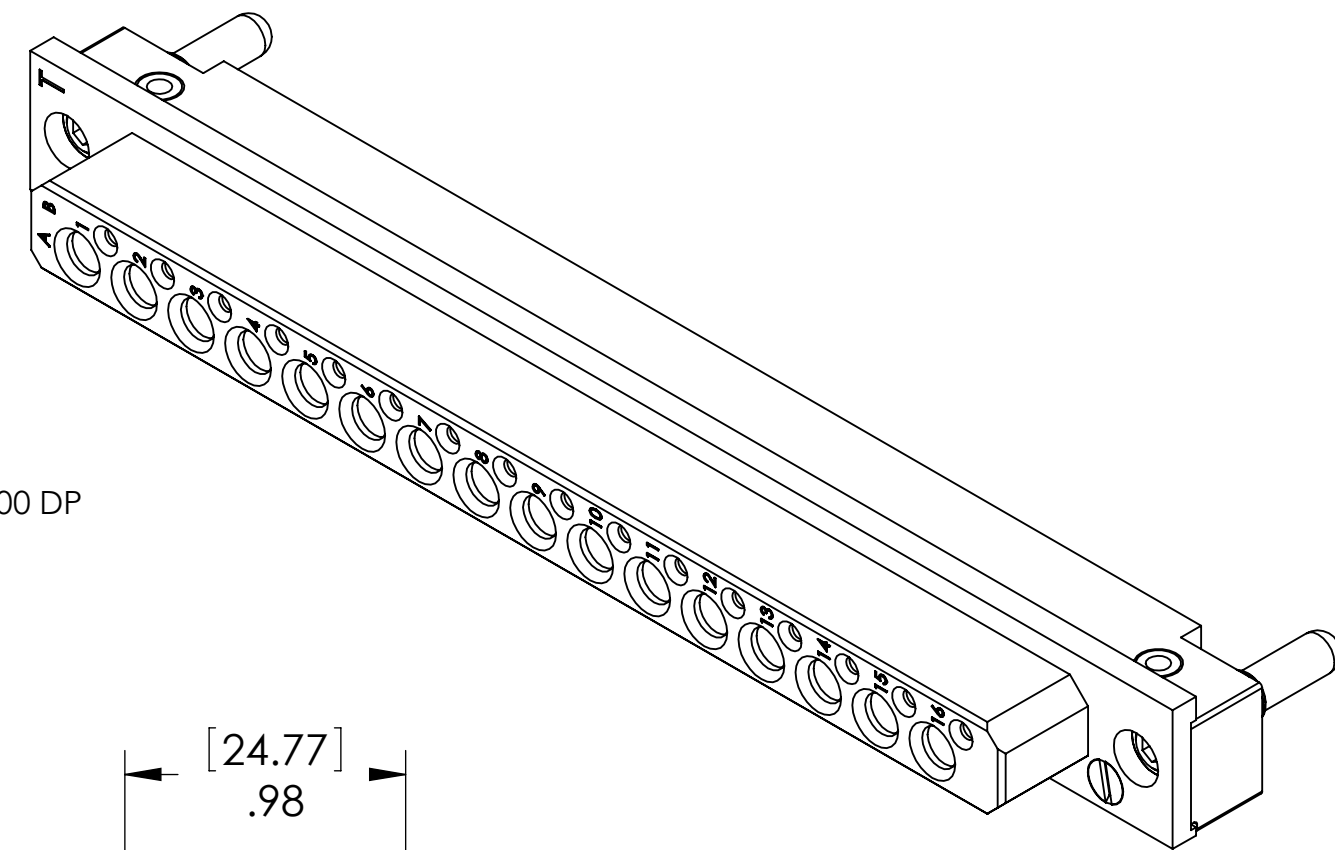
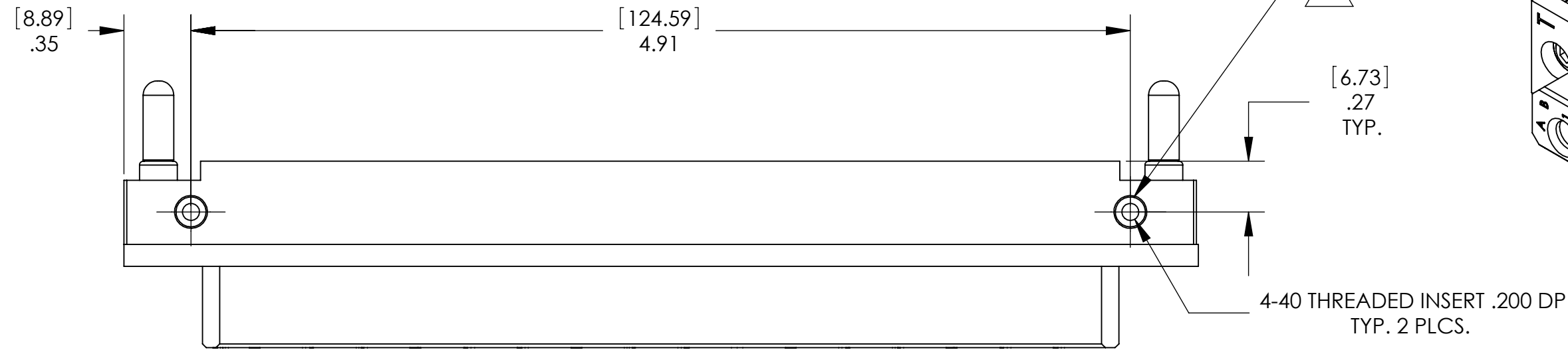
1

DO NOT SCALE DRAWING

THE INFORMATION CONTAINED HEREIN IS THE EXCLUSIVE PROPERTY OF VIRGINIA PANEL CORPORATION AND IS SUBMITTED FOR USE BY THE CUSTOMER ONLY. THE DATA SHALL NOT BE DUPLICATED, USED, OR DISCLOSED IN WHOLE OR IN PART FOR ANY PURPOSE OTHER THAN TO MAINTAIN THE EQUIPMENT PROVIDED. CONSULT WITH VIRGINIA PANEL CORPORATION ENGINEERING IF MORE DETAIL IS REQUIRED.

REVISIONS

| REV | DESCRIPTION | DATE    | ENGR   |
|-----|-------------|---------|--------|
| J   | ECN #5425   | 8/13/14 | M SNOW |



REMOVE AND DISCARD CAPS PRIOR TO INSTALLING MODULE INTO RECEIVER

3 THREADED INSERTS FOR USE WITH STRAIN RELIEF PLATE. MAX TORQUE IS 3.5 IN-LBS [.395 N-m]

2. MATING ITA MODULE PART # 510 108 178  
STRAIN RELIEF PART # 510 109 116

1. FOR APPLICATION USE & CARE INFORMATION CONSULT VPC USERS GUIDE @WWW.VPC.COM  
NOTES:

CUSTOMER DRAWING

VIRGINIA PANEL CORPORATION  
WWW.VPC.COM

TRIPADDLE SIGNAL/MINI POWER MODULE  
RECEIVER, 16/16 POSITIONS

|                          |             |           |           |              |
|--------------------------|-------------|-----------|-----------|--------------|
| DIMENSIONS ARE SHOWN AS: | SIZE        | CAGE CODE | DWG. NO.  | REV          |
| [MILLIMETERS]            | C           | 18117     | 510104206 | J            |
| INCHES                   | SCALE: NONE | 510104206 | 9/25/97   | SHEET 1 OF 1 |

4

3

2

1